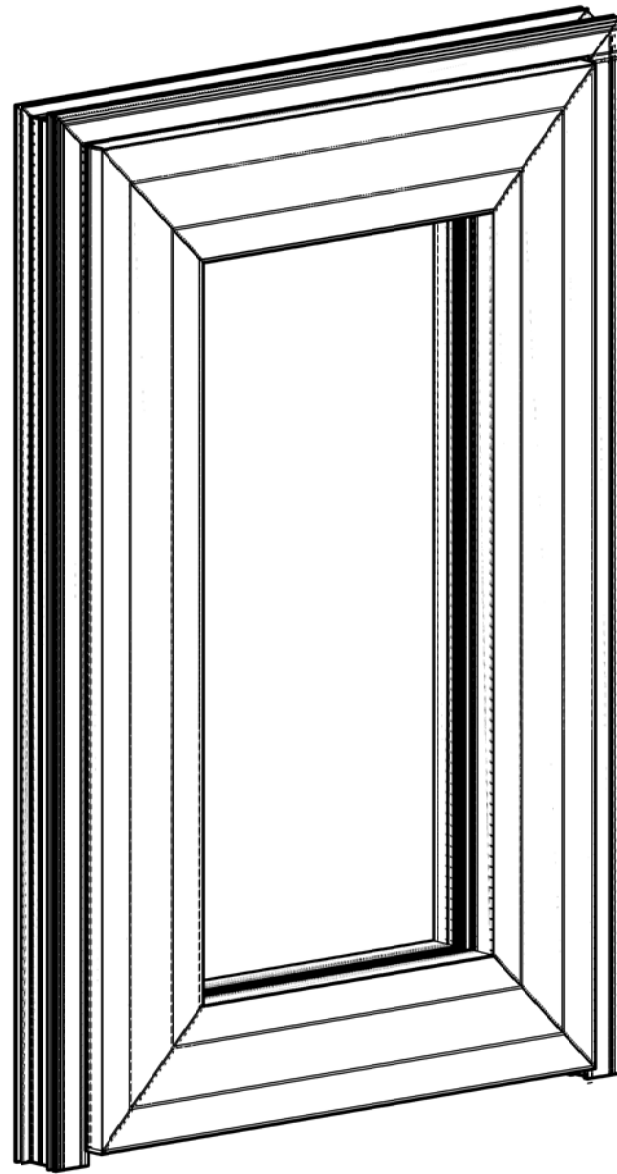


GRAHAM ARCHITECTURAL PRODUCTS, INC.

GT7700 TERRACE DOOR (LARGE & SMALL MISSILE IMPACT RATED - NON-HVHZ)



GENERAL NOTES:

- THIS SYSTEM AND GLASS TYPES DESCRIBED HEREIN COMPLY AND HAVE BEEN DESIGNED AND TESTED IN ACCORDANCE WITH THE FLORIDA BUILDING CODE SEVENTH EDITION (2020) PER
 - ASTM E1996-17 / E1886-12
 - AAMA 506-16
- SITE-SPECIFIC REQUIRED DESIGN PRESSURES SHALL BE CALCULATED BY A LICENSED PROFESSIONAL ENGINEER FOR USE WITH THIS DOCUMENT PER CURRENT ADOPTED EDITION OF ASCE 7 AND WITH LOCAL CODE REQUIREMENTS.
- THIS SYSTEM IS IMPACT RATED FOR WIND ZONE IV, NON-HVHZ.
- DESIGN PRESSURES NOTED HEREIN ARE BASED ON MAXIMUM TESTED PRESSURES DIVIDED BY A 1.5 SAFETY FACTOR.
- NO 33-1/3% INCREASE IN ALLOWABLE STRESS HAS BEEN USED IN THE DESIGN OF THIS SYSTEM. WIND LOAD DURATION FACTOR $C_d=1.6$ HAS BEEN USED FOR WOOD ANCHOR DESIGN.
- THE ARCHITECT/ENGINEER OF RECORD FOR THE PROJECT SUPERSTRUCTURE WITH WHICH THIS DESIGN IS USED SHALL BE RESPONSIBLE FOR THE INTEGRITY OF ALL SUPPORTING SURFACES TO THIS DESIGN WHICH SHALL BE COORDINATED BY THE PERMITTING CONTRACTOR. WOOD BUCKS (BY OTHERS) SHALL BE ANCHORED PROPERLY TO TRANSFER LOADS TO THE EXISTING STRUCTURE.
- THE SYSTEM DETAILED HEREIN IS GENERIC AND DOES NOT PROVIDE INFORMATION FOR A SPECIFIC SITE. FOR SITE CONDITIONS DIFFERENT FROM THE CONDITIONS DETAILED HEREIN, A LICENSED ENGINEER OR REGISTERED ARCHITECT SHALL PREPARE SITE SPECIFIC DOCUMENTS FOR USE IN CONJUNCTION WITH THIS DOCUMENT.
- THE CONTRACTOR IS RESPONSIBLE TO INSULATE ALL MEMBERS FROM DISSIMILAR MATERIALS TO PREVENT ELECTROLYSIS.
- FASTENERS SHALL BE CADMIUM-PLATED OR OTHERWISE CORROSION-RESISTANT MATERIAL AND SHALL COMPLY WITH "SPECIFICATIONS FOR ALUMINUM STRUCTURES" SECTION J.3.7.2 BY THE ALUMINUM ASSOCIATION, INC., & ANY APPLICABLE FEDERAL, STATE, AND/OR LOCAL CODES
- ENGINEER SEAL AFFIXED HERE TO VALIDATES STRUCTURAL DESIGN AS SHOWN ONLY. USE OF THIS SPECIFICATION BY CONTRACTOR, et. al. INDEMNIFIES & SAVES HARMLESS THIS ENGINEER FOR ALL COST & DAMAGES INCLUDING LEGAL FEES & APPELLATE FEES RESULTING FROM MATERIAL FABRICATION, SYSTEM ERECTION, & CONSTRUCTION PRACTICES BEYOND THAT WHICH IS CALLED FOR BY LOCAL, STATE, & FEDERAL CODES & FROM DEVIATIONS OF THIS PLAN.
- EXCEPT AS EXPRESSLY PROVIDED HEREIN, NO ADDITIONAL CERTIFICATIONS OR AFFIRMATIONS ARE INTENDED.
- PRESSURE VALUES ON THIS APPROVAL ARE (ASD) ALLOWABLE DESIGN PRESSURES.
- ALTERATIONS, ADDITIONS, OR OTHER MARKINGS TO THIS DOCUMENT ARE NOT PERMITTED AND INVALIDATE THIS CERTIFICATION.
- SAFEGUARDS MUST BE OBSERVED (NOT IN THIS CERTIFICATION)
- PRODUCT SHALL BE PERMANENTLY LABELED WITH A MINIMUM OF ONE LABEL PER SYSTEM CONTAINING THE FOLLOWING:
 GRAHAM ARCHITECTURAL PRODUCTS, INC
 1551 MT. ROSE AVE.
 YORK, PA 17403

SHEET INDEX

# SHEET	DESCRIPTION
01	COVER SHEET
02	ELEVATIONS
03-04	GLAZING DETAILS & GLASS LOADING TABLES
05	FRAME LOADING TABLES
06-08	ANCHOR SCHEDULE & ANCHOR LOADING TABLES
09-11	DETAILS
12-13	EXTRUSIONS / PART LIST
13	TOTAL

VISIT ECALC.IO/38785

FOR HELPFUL RESOURCES, SITE SPECIFIC JOB ORDERING & MORE INFORMATION ABOUT THIS PRODUCT & RELATED SERVICES

SCAN HERE:



FRANK BENNARDO, P.E.
PE# 0046549 CA, 9885



04/19/2021

FL# 38537.1



CORPORATE OFFICE:
160 SW 12th AVE, SUITE 106
DEERFIELD BEACH, FL 33442
(954) 354-0660 | (866) 396-9999
TEAM@ENGINEERINGEXPRESS.COM
ENGINEERINGEXPRESS.COM

GRAHAM ARCHITECTURAL PRODUCTS
1551 MT. ROSE AVENUE | YORK, PA 17403
PH: (717) 849-8100

SERIES GT6700 TERRACE DOOR
FLORIDA STATEWIDE APPROVAL
FLORIDA BUILDING CODE 7TH EDITION (2020)

REMARKS	DRWN	CHKD	DATE
FBC 2020 UPDATE	TAE	AJP	04/01/21

COPYRIGHT ENGINEERING EXPRESS®

21-38785

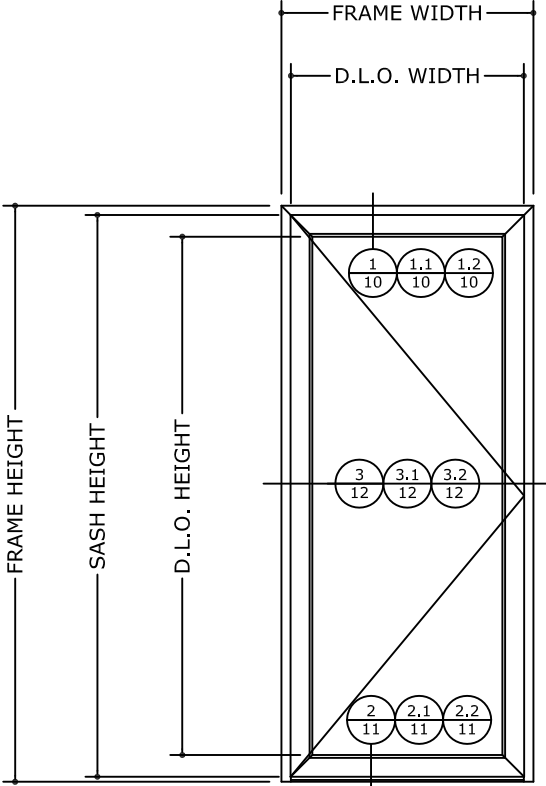
SCALE: NTS UNLESS NOTED

01

13

01

ELEVATIONS



INSTRUCTIONS TO DETERMINE DESIGN PRESSURE RATING

STEP ①: USE THE GLASS LOADING TABLES TO DETERMINE THE ALLOWABLE PRESSURE OF THE GLASS.

STEP ②: USE THE FRAME LOADING TABLE TO DETERMINE THE ALLOWABLE PRESSURES.

STEP ③: THE MINIMUM VALUE BETWEEN STEP ① AND STEP ② WILL DETERMINE THE DESIGN LOAD PRESSURE FOR THE WINDOW SYSTEM.

MAX D.L.O. AREA = 18,9 SQ. FT

MAXIMUM ALLOWABLE DESIGN PRESSURES:
+70 PSF, -90 PSF

FRANK BENNARDO, P.E.
PE# 0046549 CA, 9885



04/19/2021

FL# 38537.1

ENGINEERING EXPRESS®
CORPORATE OFFICE:
160 SW 12th AVE, SUITE 106
DEERFIELD BEACH, FL 33442
(954) 354-0660 | (866) 396-9999
TEAM@ENGINEERINGEXPRESS.COM
ENGINEERINGEXPRESS.COM

GRAHAM ARCHITECTURAL PRODUCTS
1551 MT. ROSE AVENUE | YORK, PA 17403
PH: (717) 849-8100
SERIES GT6700 TERRACE DOOR
FLORIDA STATEWIDE APPROVAL
FLORIDA BUILDING CODE 7TH EDITION (2020)

REMARKS	DRWN	CHKD	DATE
FBC 2020 UPDATE	TAE	AJP	04/01/21
	-	-	-
	-	-	-
	-	-	-

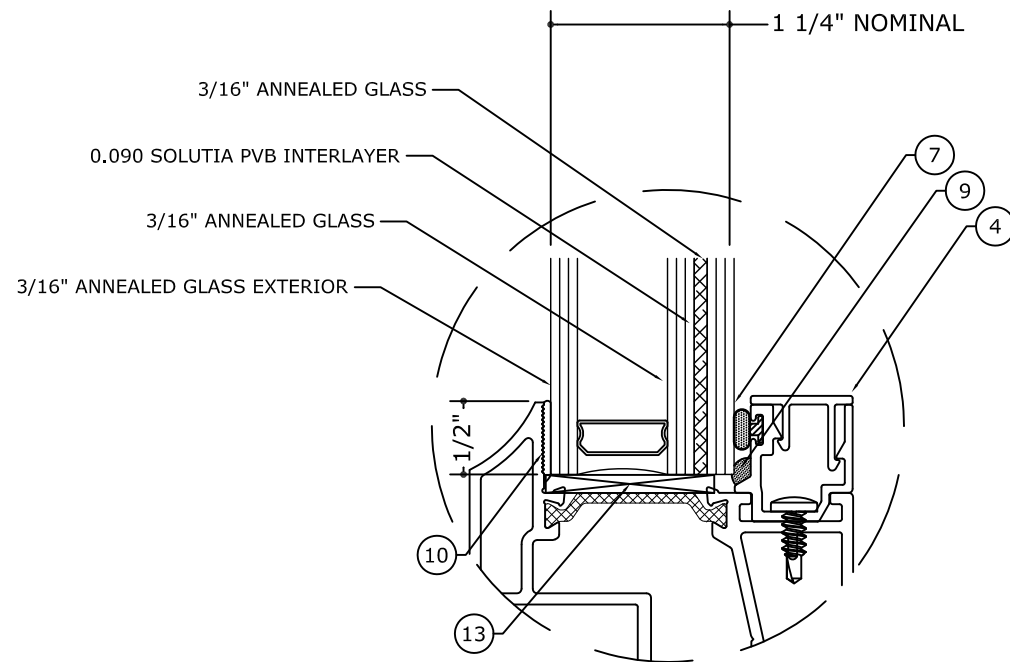
COPYRIGHT ENGINEERING EXPRESS®
21-38785

SCALE: NTS UNLESS NOTED

02 13

GLASS TYPES

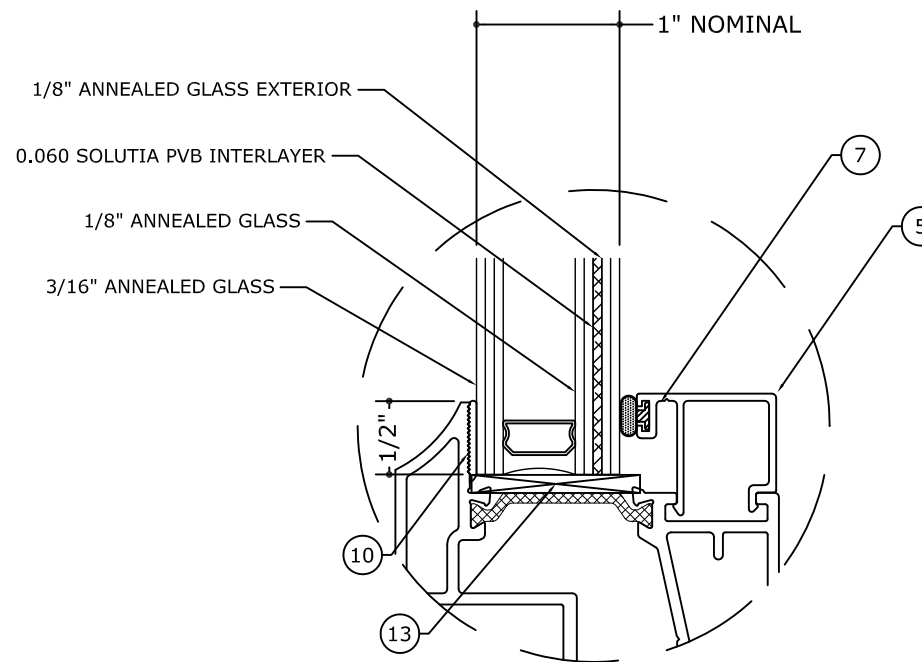
NOTE: GLASS SIZE = DLO + 1"



GLASS TYPE **G1**

GLAZING DETAIL

N.T.S.
GLASS RATING:
 LARGE MISSILE IMPACT
 MISSILE LEVEL D



GLASS TYPE **G2**

GLAZING DETAIL

N.T.S.
GLASS RATING:
 SMALL MISSILE IMPACT
 MISSILE LEVEL A

NOTE:
 GLAZING TYPE COMPLIES WITH ASTM
 E1300 REQUIREMENTS.

FRANK BENNARDO, P.E.
 PE# 0046549 CA, 9885



04/19/2021

FL# 38537.1

ENGINEERING EXPRESS®
 CORPORATE OFFICE:
 160 SW 12th AVE, SUITE 106
 DEERFIELD BEACH, FL 33442
 (954) 354-0660 | (866) 396-9999
 TEAM@ENGINEERINGEXPRESS.COM
 ENGINEERINGEXPRESS.COM

GRAHAM ARCHITECTURAL PRODUCTS
 1551 MT. ROSE AVENUE | YORK, PA 17403
 PH: (717) 849-8100
 SERIES GT6700 TERRACE DOOR
 FLORIDA STATEWIDE APPROVAL
 FLORIDA BUILDING CODE 7TH EDITION (2020)

REMARKS	DRWN	CHKD	DATE
FBC 2020 UPDATE	TAE	AJP	04/01/21

COPYRIGHT ENGINEERING EXPRESS®

21-38785

SCALE: NTS UNLESS NOTED

03 13

C:\Users\joem\appdata\local\temp\AcPublish_7248\21-38785 GT700 Terrace Door (2020 FSA).dwg

joem

04/19/2021 - 5:17pm

GLASS LOADING TABLES

GLASS TYPES		G1 G2	
		ALLOWABLE PRESSURE	
D.L.O. HEIGHT (in)	D.L.O. WIDTH (in)	(+) P.S.F.	(-) P.S.F.
24	24	70	90
	31	70	90
	36	70	90
	42	70	90
	48	70	90
	54	70	90
	60	70	90
	64	70	90
	70	70	90
31	24	70	90
	31	70	90
	36	70	90
	42	70	90
	48	70	90
	54	70	90
	60	70	90
	64	70	90
	70	70	90
36	24	70	90
	31	70	90
	36	61	79
	42	61	79
	48	61	79
	54	61	79
	60	61	79
	64	61	79
	70	61	79

GLASS TYPES		G1 G2	
		ALLOWABLE PRESSURE	
D.L.O. HEIGHT (in)	D.L.O. WIDTH (in)	(+) P.S.F.	(-) P.S.F.
42	24	70	90
	31	70	90
	36	61	79
	42	52	67
	48	52	67
	54	52	67
	60	52	67
	64	52	67
	70	52	67
48	24	70	90
	31	70	90
	36	61	79
	42	52	67
	48	46	59
	54	46	59
54	24	70	90
	31	70	90
	36	61	79
	42	52	67
	48	46	59
60	24	70	90
	31	70	90
	36	61	79
	42	52	67

GLASS TYPES		G1 G2	
		ALLOWABLE PRESSURE	
D.L.O. HEIGHT (in)	D.L.O. WIDTH (in)	(+) P.S.F.	(-) P.S.F.
66	24	70	90
	31	70	90
	36	61	79
	42	52	67
72	24	70	90
	31	70	90
78	24	70	90
	31	70	90
84	24	70	90
	31	70	90
90	24	70	90
96	24	70	90

NOTE: D.L.O. WIDTH AND HEIGHT DIMENSIONS CAN BE REVERSED.

FRANK BENNARDO, P.E.
PE# 0046549 CA, 9885



FL# 38537.1

ENGINEERING EXPRESS®
CORPORATE OFFICE:
160 SW 12th AVE, SUITE 106
DEERFIELD BEACH, FL 33442
(954) 354-0660 | (866) 396-9999
TEAM@ENGINEERINGEXPRESS.COM
ENGINEERINGEXPRESS.COM

GRAHAM ARCHITECTURAL PRODUCTS
1551 MT. ROSE AVENUE | YORK, PA 17403
PH: (717) 849-8100

SERIES GT6700 TERRACE DOOR
FLORIDA STATEWIDE APPROVAL
FLORIDA BUILDING CODE 7TH EDITION (2020)

REMARKS	DRWN	CHKD	DATE
FBC 2020 UPDATE	TAE	AJP	04/01/21

COPYRIGHT ENGINEERING EXPRESS®

21-38785

SCALE: NTS UNLESS NOTED

04

13

04/19/2021

C:\Users\joem\appdata\local\temp\AcPublish_7248\21-38785 GT700 Terrace Door (2020 FSA).dwg joem 04/19/2021 - 5:17pm

FRAME LOADING TABLES

TERRACE DOOR ALLOWABLE PRESSURES			
FRAME WIDTH (in)	FRAME HEIGHT (in)	(+) P.S.F.	(-) P.S.F.
24	24	70	90
	30	70	90
	36	70	90
	42	70	90
	48	70	90
	54	70	90
	60	70	90
	66	70	90
	72	70	90
	78	70	90
30	24	70	90
	30	70	90
	36	70	90
	42	70	90
	48	70	90
	54	70	90
	60	70	90
	66	70	90
	72	70	90
	78	70	90
36	24	70	90
	30	70	90
	36	70	90
	42	70	90
	48	70	90
	54	70	90
	60	70	90
	66	70	90
	72	70	90
	78	70	90

TERRACE DOOR ALLOWABLE PRESSURES			
FRAME WIDTH (in)	FRAME HEIGHT (in)	(+) P.S.F.	(-) P.S.F.
42	24	70	90
	30	70	90
	36	70	90
	42	70	90
	48	70	90
	54	70	90
	60	70	90
	66	70	90
	72	70	90
	78	70	90
48	24	70	90
	30	70	90
	36	70	90
	42	70	90
	48	61	78
	54	61	78
	60	61	78
	66	61	78
	72	61	78
	78	61	78
54	24	70	90
	30	70	90
	36	70	90
	42	70	90
	48	61	78
	54	54	70
	60	54	70
	66	54	70
	72	54	70
	78	54	70
60	24	70	90
	30	70	90
	36	70	90
	42	70	90
	48	61	78
	54	54	70
	60	49	63
66	49	63	

TERRACE DOOR ALLOWABLE PRESSURES			
FRAME WIDTH (in)	FRAME HEIGHT (in)	(+) P.S.F.	(-) P.S.F.
66	24	70	90
	30	70	90
	36	70	90
	42	70	90
	48	61	78
	54	54	70
	60	49	63
	66	49	63
72	24	70	90
	30	70	90
	36	70	90
	42	70	90
	48	61	78
	54	54	70
78	24	70	90
	30	70	90
	36	70	90
	42	70	90
	48	61	78
	54	54	70
84	24	70	90
	30	70	90
	36	70	90
	42	70	90
94	24	70	90
	30	70	90
	36	70	90
	42	70	90
96	24	70	90
	30	70	90
	36	70	90

FRANK BENNARDO, P.E.
PE# 0046549 CA, 9885



04/19/2021

FL# 38537.1

ENGINEERING EXPRESS®
CORPORATE OFFICE:
160 SW 12th AVE, SUITE 106
DEERFIELD BEACH, FL 33442
(954) 354-0660 | (866) 396-9999
TEAM@ENGINEERINGEXPRESS.COM
ENGINEERINGEXPRESS.COM

GRAHAM ARCHITECTURAL PRODUCTS
1551 MT. ROSE AVENUE | YORK, PA 17403
PH: (717) 849-8100

SERIES GT6700 TERRACE DOOR
FLORIDA STATEWIDE APPROVAL
FLORIDA BUILDING CODE 7TH EDITION (2020)

REMARKS	DRWN	CHKD	DATE
FBC 2020 UPDATE	TAE	AJP	04/01/21

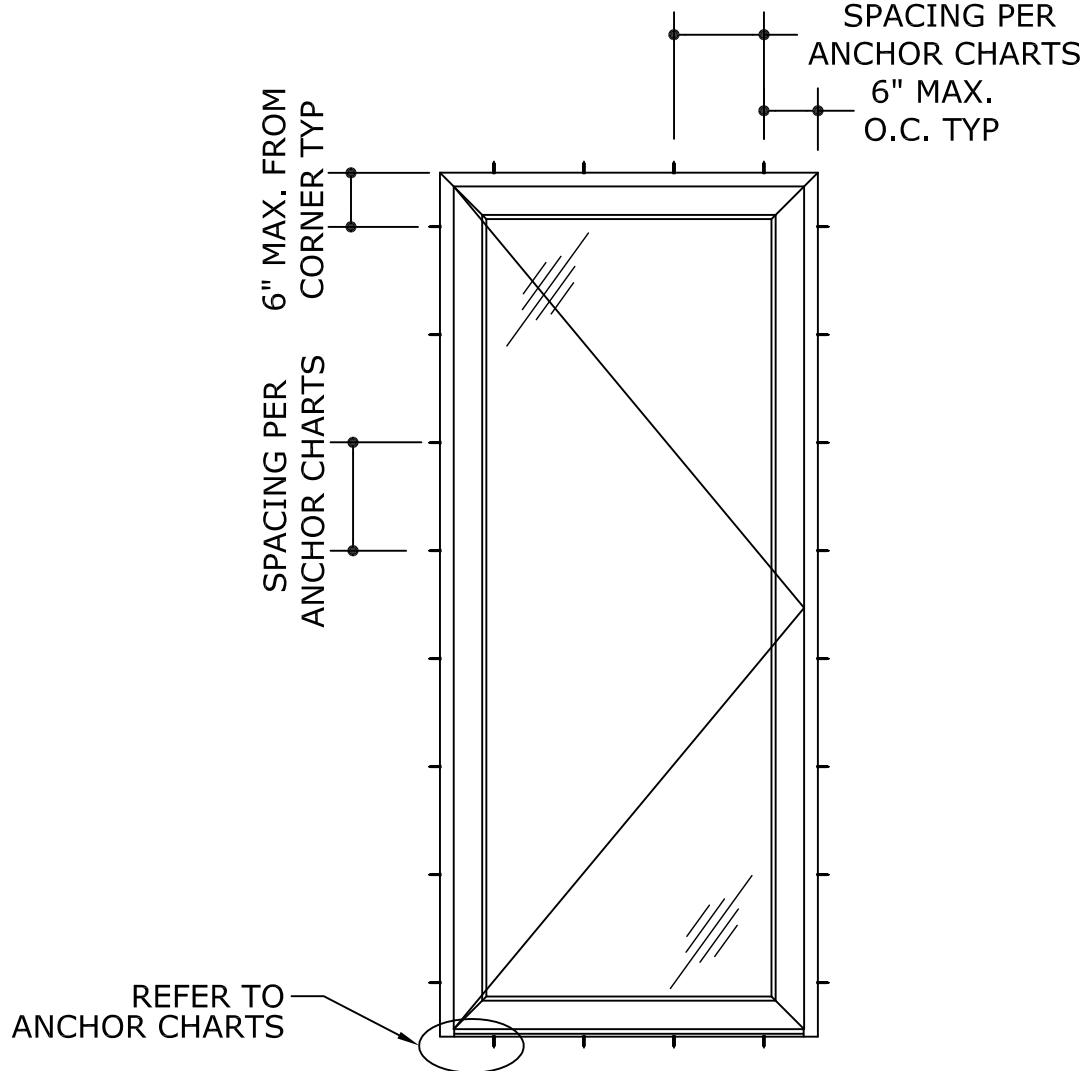
COPYRIGHT ENGINEERING EXPRESS®

21-38785

SCALE: NTS UNLESS NOTED

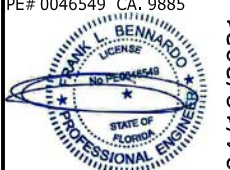
05

FASTENER SCHEDULE



ANCHOR SCHEDULE					
ANCHOR TYPE	ANCHOR DIAMETER	TYPE	SUBSTRATE	MIN. EMBEDMENT (IN)	MIN. EDGE DISTANCE (IN)
A	3/16"	TAPCON	POURED CONCRETE 3000 PSI MIN	1-1/4	2-1/2
B	#10-16	SELF DRILLING SCREW	16 GA. MIN. STUD ASTM A-653 GRADE 33 STEEL	3 PINCHES PASSED THREAD PLANE	1/2
			1/8" STEEL-A36		
			1/8" ALUMINUM-6063-T6		
C	#10	WOOD SCREW	2X WOOD BUCK (SYP#2 MIN.) G=0.55	1-1/2	3/4

FRANK BENNARDO, P.E.
PE# 0046549 CA, 9885



04/19/2021

FL# 38537.1

ENGINEERING EXPRESS®

CORPORATE OFFICE:
160 SW 12th AVE, SUITE 106
DEERFIELD BEACH, FL 33442
(954) 354-0660 | (866) 396-9999
TEAM@ENGINEERINGEXPRESS.COM
ENGINEERINGEXPRESS.COM

GRAHAM ARCHITECTURAL PRODUCTS

1551 MT. ROSE AVENUE | YORK, PA 17403
PH: (717) 849-8100

SERIES GT6700 TERRACE DOOR
FLORIDA STATEWIDE APPROVAL
FLORIDA BUILDING CODE 7TH EDITION (2020)

REMARKS	DRWN	CHKD	DATE
FBC 2020 UPDATE	TAE	AJP	04/07/21

COPYRIGHT ENGINEERING EXPRESS®

21-38785

SCALE: NTS UNLESS NOTED

06

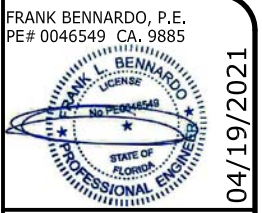
13

C:\Users\joem\appdata\local\temp\AcPublish_7248\21-38785 GT700 Terrace Door (2020 FSA).dwg

ANCHOR CHARTS

FRAME HEIGHT (IN)	FRAME WIDTH (IN)	TYPE A (CONCRETE) DESIGN PRESSURE = 90 PSF		TYPE B (METAL) DESIGN PRESSURE = 90 PSF		TYPE C (WOOD) DESIGN PRESSURE = 90 PSF	
		HEAD/SILL MAX ANCHOR SPACING (IN)	JAMBS MAX ANCHOR SPACING (IN)	HEAD/SILL MAX ANCHOR SPACING (IN)	JAMBS MAX ANCHOR SPACING (IN)	HEAD/SILL MAX ANCHOR SPACING (IN)	JAMBS MAX ANCHOR SPACING (IN)
24	24	24 O.C.	29 O.C.	25 O.C.	30 O.C.	22 O.C.	27 O.C.
	30	24 O.C.	24 O.C.	25 O.C.	25 O.C.	22 O.C.	22 O.C.
	36	24 O.C.	21 O.C.	25 O.C.	22 O.C.	22 O.C.	19 O.C.
	42	24 O.C.	19 O.C.	25 O.C.	20 O.C.	22 O.C.	17 O.C.
	48	24 O.C.	18 O.C.	25 O.C.	18 O.C.	22 O.C.	16 O.C.
	54	24 O.C.	17 O.C.	25 O.C.	17 O.C.	22 O.C.	15 O.C.
	60	24 O.C.	16 O.C.	25 O.C.	16 O.C.	22 O.C.	14 O.C.
	63	24 O.C.	16 O.C.	25 O.C.	16 O.C.	22 O.C.	14 O.C.
	66	24 O.C.	16 O.C.	25 O.C.	16 O.C.	22 O.C.	14 O.C.
	78	24 O.C.	15 O.C.	25 O.C.	16 O.C.	22 O.C.	13 O.C.
30	24	19 O.C.	29 O.C.	20 O.C.	30 O.C.	17 O.C.	27 O.C.
	30	19 O.C.	24 O.C.	20 O.C.	25 O.C.	17 O.C.	22 O.C.
	36	19 O.C.	21 O.C.	20 O.C.	22 O.C.	17 O.C.	19 O.C.
	42	19 O.C.	19 O.C.	20 O.C.	20 O.C.	17 O.C.	17 O.C.
	48	19 O.C.	18 O.C.	20 O.C.	18 O.C.	17 O.C.	16 O.C.
	54	19 O.C.	17 O.C.	20 O.C.	17 O.C.	17 O.C.	15 O.C.
	60	19 O.C.	16 O.C.	20 O.C.	16 O.C.	17 O.C.	14 O.C.
	63	19 O.C.	16 O.C.	20 O.C.	16 O.C.	17 O.C.	14 O.C.
	66	19 O.C.	16 O.C.	20 O.C.	16 O.C.	17 O.C.	14 O.C.
	78	19 O.C.	15 O.C.	20 O.C.	16 O.C.	17 O.C.	13 O.C.
36	24	16 O.C.	29 O.C.	17 O.C.	30 O.C.	14 O.C.	27 O.C.
	30	16 O.C.	24 O.C.	17 O.C.	25 O.C.	14 O.C.	22 O.C.
	36	16 O.C.	21 O.C.	17 O.C.	22 O.C.	14 O.C.	19 O.C.
	42	16 O.C.	19 O.C.	17 O.C.	20 O.C.	14 O.C.	17 O.C.
	48	16 O.C.	18 O.C.	17 O.C.	18 O.C.	14 O.C.	16 O.C.
	54	16 O.C.	17 O.C.	17 O.C.	17 O.C.	14 O.C.	15 O.C.
	60	16 O.C.	16 O.C.	17 O.C.	16 O.C.	14 O.C.	14 O.C.
	63	16 O.C.	16 O.C.	17 O.C.	16 O.C.	14 O.C.	14 O.C.
	66	16 O.C.	16 O.C.	17 O.C.	16 O.C.	14 O.C.	14 O.C.
	78	16 O.C.	15 O.C.	17 O.C.	16 O.C.	14 O.C.	13 O.C.

FRAME HEIGHT (IN)	FRAME WIDTH (IN)	TYPE A (CONCRETE) DESIGN PRESSURE = 90 PSF		TYPE B (METAL) DESIGN PRESSURE = 90 PSF		TYPE C (WOOD) DESIGN PRESSURE = 90 PSF	
		HEAD/SILL MAX ANCHOR SPACING (IN)	JAMBS MAX ANCHOR SPACING (IN)	HEAD/SILL MAX ANCHOR SPACING (IN)	JAMBS MAX ANCHOR SPACING (IN)	HEAD/SILL MAX ANCHOR SPACING (IN)	JAMBS MAX ANCHOR SPACING (IN)
42	24	14 O.C.	29 O.C.	14 O.C.	30 O.C.	12 O.C.	27 O.C.
	30	14 O.C.	24 O.C.	14 O.C.	25 O.C.	12 O.C.	22 O.C.
	36	14 O.C.	21 O.C.	14 O.C.	22 O.C.	12 O.C.	19 O.C.
	42	14 O.C.	19 O.C.	14 O.C.	20 O.C.	12 O.C.	17 O.C.
	48	14 O.C.	18 O.C.	14 O.C.	18 O.C.	12 O.C.	16 O.C.
	54	14 O.C.	17 O.C.	14 O.C.	17 O.C.	12 O.C.	15 O.C.
	60	14 O.C.	16 O.C.	14 O.C.	16 O.C.	12 O.C.	14 O.C.
	63	14 O.C.	16 O.C.	14 O.C.	16 O.C.	12 O.C.	14 O.C.
	66	14 O.C.	16 O.C.	14 O.C.	16 O.C.	12 O.C.	14 O.C.
	78	14 O.C.	15 O.C.	14 O.C.	16 O.C.	12 O.C.	13 O.C.
48	24	14 O.C.	29 O.C.	13 O.C.	30 O.C.	12 O.C.	27 O.C.
	30	14 O.C.	24 O.C.	13 O.C.	25 O.C.	12 O.C.	22 O.C.
	36	12 O.C.	21 O.C.	13 O.C.	22 O.C.	10 O.C.	19 O.C.
	42	12 O.C.	19 O.C.	13 O.C.	20 O.C.	10 O.C.	17 O.C.
	48	12 O.C.	18 O.C.	13 O.C.	18 O.C.	10 O.C.	16 O.C.
	54	12 O.C.	17 O.C.	13 O.C.	17 O.C.	10 O.C.	15 O.C.
	60	12 O.C.	16 O.C.	13 O.C.	16 O.C.	10 O.C.	14 O.C.
	63	12 O.C.	16 O.C.	13 O.C.	16 O.C.	10 O.C.	14 O.C.
	66	12 O.C.	16 O.C.	13 O.C.	16 O.C.	10 O.C.	14 O.C.
	78	12 O.C.	15 O.C.	13 O.C.	16 O.C.	10 O.C.	13 O.C.
54	24	14 O.C.	29 O.C.	16 O.C.	30 O.C.	12 O.C.	27 O.C.
	30	14 O.C.	24 O.C.	16 O.C.	25 O.C.	12 O.C.	22 O.C.
	36	12 O.C.	21 O.C.	13 O.C.	22 O.C.	10 O.C.	19 O.C.
	42	12 O.C.	19 O.C.	13 O.C.	20 O.C.	10 O.C.	17 O.C.
	48	12 O.C.	18 O.C.	13 O.C.	18 O.C.	10 O.C.	16 O.C.
	54	12 O.C.	17 O.C.	13 O.C.	17 O.C.	10 O.C.	15 O.C.
	60	12 O.C.	16 O.C.	13 O.C.	16 O.C.	10 O.C.	14 O.C.
	63	12 O.C.	16 O.C.	13 O.C.	16 O.C.	10 O.C.	14 O.C.
	66	12 O.C.	16 O.C.	13 O.C.	16 O.C.	10 O.C.	14 O.C.
	78	12 O.C.	15 O.C.	13 O.C.	16 O.C.	10 O.C.	13 O.C.



FL# 38537.1

ENGINEERING EXPRESS
 CORPORATE OFFICE:
 160 SW 12th AVE, SUITE 106
 DEERFIELD BEACH, FL 33442
 (954) 354-0660 | (866) 396-9999
 TEAM@ENGINEERINGEXPRESS.COM
 ENGINEERINGEXPRESS.COM

GRAHAM ARCHITECTURAL PRODUCTS
 1551 MT. ROSE AVENUE | YORK, PA 17403
 PH: (717) 849-8100
 SERIES GT6700 TERRACE DOOR
 FLORIDA STATEWIDE APPROVAL
 FLORIDA BUILDING CODE 7TH EDITION (2020)

REMARKS	DRWN	CHKD	DATE
FBC 2020 UPDATE	TAE	AJP	04/01/21

21-38785

SCALE: NTS UNLESS NOTED

C:\Users\joem\appdata\local\temp\AcPublish_724821-38785 GT700 Terrace Door (2020 FSA).dwg 04/19/2021 - 5:17pm joem

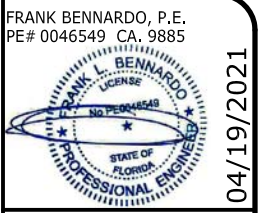
04/19/2021

ANCHOR CHARTS

FRAME HEIGHT (IN)	FRAME WIDTH (IN)	TYPE A (CONCRETE) DESIGN PRESSURE = 90 PSF		TYPE B (METAL) DESIGN PRESSURE = 90 PSF		TYPE C (WOOD) DESIGN PRESSURE = 90 PSF	
		HEAD/SILL MAX ANCHOR SPACING (IN)	JAMBS MAX ANCHOR SPACING (IN)	HEAD/SILL MAX ANCHOR SPACING (IN)	JAMBS MAX ANCHOR SPACING (IN)	HEAD/SILL MAX ANCHOR SPACING (IN)	JAMBS MAX ANCHOR SPACING (IN)
60	24	14 O.C.	29 O.C.	16 O.C.	30 O.C.	12 O.C.	27 O.C.
	30	14 O.C.	24 O.C.	16 O.C.	25 O.C.	12 O.C.	22 O.C.
	36	12 O.C.	21 O.C.	13 O.C.	22 O.C.	10 O.C.	19 O.C.
	42	12 O.C.	19 O.C.	13 O.C.	20 O.C.	10 O.C.	17 O.C.
	48	12 O.C.	18 O.C.	13 O.C.	18 O.C.	10 O.C.	16 O.C.
	54	12 O.C.	17 O.C.	13 O.C.	17 O.C.	10 O.C.	15 O.C.
	60	12 O.C.	16 O.C.	13 O.C.	16 O.C.	10 O.C.	14 O.C.
	63	12 O.C.	16 O.C.	13 O.C.	16 O.C.	10 O.C.	14 O.C.
	66	12 O.C.	16 O.C.	13 O.C.	16 O.C.	10 O.C.	14 O.C.
	78	12 O.C.	15 O.C.	13 O.C.	16 O.C.	10 O.C.	13 O.C.
63	24	14 O.C.	29 O.C.	16 O.C.	30 O.C.	12 O.C.	27 O.C.
	30	14 O.C.	24 O.C.	16 O.C.	25 O.C.	12 O.C.	22 O.C.
	36	12 O.C.	21 O.C.	13 O.C.	22 O.C.	10 O.C.	19 O.C.
	42	12 O.C.	19 O.C.	13 O.C.	20 O.C.	10 O.C.	17 O.C.
	48	12 O.C.	18 O.C.	13 O.C.	18 O.C.	10 O.C.	16 O.C.
	54	12 O.C.	17 O.C.	13 O.C.	17 O.C.	10 O.C.	15 O.C.
	60	12 O.C.	16 O.C.	13 O.C.	16 O.C.	10 O.C.	14 O.C.
	63	12 O.C.	16 O.C.	13 O.C.	16 O.C.	10 O.C.	14 O.C.
	66	12 O.C.	16 O.C.	13 O.C.	16 O.C.	10 O.C.	14 O.C.
	78	12 O.C.	15 O.C.	13 O.C.	16 O.C.	10 O.C.	13 O.C.
66	24	14 O.C.	29 O.C.	16 O.C.	30 O.C.	12 O.C.	27 O.C.
	30	14 O.C.	24 O.C.	16 O.C.	25 O.C.	12 O.C.	22 O.C.
	36	12 O.C.	21 O.C.	13 O.C.	22 O.C.	10 O.C.	19 O.C.
	42	12 O.C.	19 O.C.	13 O.C.	20 O.C.	10 O.C.	17 O.C.
	48	12 O.C.	18 O.C.	13 O.C.	18 O.C.	10 O.C.	16 O.C.
	54	12 O.C.	17 O.C.	13 O.C.	17 O.C.	10 O.C.	15 O.C.
	60	12 O.C.	16 O.C.	13 O.C.	16 O.C.	10 O.C.	14 O.C.
	63	12 O.C.	16 O.C.	13 O.C.	16 O.C.	10 O.C.	14 O.C.
	66	12 O.C.	16 O.C.	13 O.C.	16 O.C.	10 O.C.	14 O.C.
	78	12 O.C.	15 O.C.	13 O.C.	16 O.C.	10 O.C.	13 O.C.

FRAME HEIGHT (IN)	FRAME WIDTH (IN)	TYPE A (CONCRETE) DESIGN PRESSURE = 90 PSF		TYPE B (METAL) DESIGN PRESSURE = 90 PSF		TYPE C (WOOD) DESIGN PRESSURE = 90 PSF	
		HEAD/SILL MAX ANCHOR SPACING (IN)	JAMBS MAX ANCHOR SPACING (IN)	HEAD/SILL MAX ANCHOR SPACING (IN)	JAMBS MAX ANCHOR SPACING (IN)	HEAD/SILL MAX ANCHOR SPACING (IN)	JAMBS MAX ANCHOR SPACING (IN)
72	24	14 O.C.	29 O.C.	16 O.C.	30 O.C.	12 O.C.	27 O.C.
	30	14 O.C.	24 O.C.	16 O.C.	25 O.C.	12 O.C.	22 O.C.
	36	12 O.C.	21 O.C.	13 O.C.	22 O.C.	10 O.C.	19 O.C.
	42	12 O.C.	19 O.C.	13 O.C.	20 O.C.	10 O.C.	17 O.C.
	48	12 O.C.	18 O.C.	13 O.C.	18 O.C.	10 O.C.	16 O.C.
	54	12 O.C.	17 O.C.	13 O.C.	17 O.C.	10 O.C.	15 O.C.
	60	12 O.C.	16 O.C.	13 O.C.	16 O.C.	10 O.C.	14 O.C.
	63	12 O.C.	16 O.C.	13 O.C.	16 O.C.	10 O.C.	14 O.C.
	66	12 O.C.	16 O.C.	13 O.C.	16 O.C.	10 O.C.	14 O.C.
	78	12 O.C.	15 O.C.	13 O.C.	16 O.C.	10 O.C.	13 O.C.
75	24	14 O.C.	29 O.C.	16 O.C.	30 O.C.	12 O.C.	27 O.C.
	30	14 O.C.	24 O.C.	16 O.C.	25 O.C.	12 O.C.	22 O.C.
	36	12 O.C.	21 O.C.	13 O.C.	22 O.C.	10 O.C.	19 O.C.
	42	12 O.C.	19 O.C.	13 O.C.	20 O.C.	10 O.C.	17 O.C.
	48	12 O.C.	18 O.C.	13 O.C.	18 O.C.	10 O.C.	16 O.C.
	54	12 O.C.	17 O.C.	13 O.C.	17 O.C.	10 O.C.	15 O.C.
	60	12 O.C.	16 O.C.	13 O.C.	16 O.C.	10 O.C.	14 O.C.
	63	12 O.C.	16 O.C.	13 O.C.	16 O.C.	10 O.C.	14 O.C.
	66	12 O.C.	16 O.C.	13 O.C.	16 O.C.	10 O.C.	14 O.C.
	78	12 O.C.	15 O.C.	13 O.C.	16 O.C.	10 O.C.	13 O.C.
78	24	14 O.C.	28 O.C.	16 O.C.	30 O.C.	12 O.C.	26 O.C.
	30	14 O.C.	24 O.C.	16 O.C.	25 O.C.	12 O.C.	22 O.C.
	36	12 O.C.	21 O.C.	13 O.C.	22 O.C.	10 O.C.	19 O.C.
	42	12 O.C.	19 O.C.	13 O.C.	20 O.C.	10 O.C.	17 O.C.
	48	12 O.C.	17 O.C.	13 O.C.	18 O.C.	10 O.C.	15 O.C.
	54	12 O.C.	16 O.C.	13 O.C.	17 O.C.	10 O.C.	14 O.C.
	60	12 O.C.	16 O.C.	13 O.C.	16 O.C.	10 O.C.	14 O.C.
	63	12 O.C.	15 O.C.	13 O.C.	16 O.C.	10 O.C.	13 O.C.
	66	12 O.C.	15 O.C.	13 O.C.	16 O.C.	10 O.C.	13 O.C.
	78	12 O.C.	15 O.C.	13 O.C.	16 O.C.	10 O.C.	13 O.C.

FRANK BENNARDO, P.E.
PE# 0046549 CA, 9885



FL# 38537.1

ENGINEERING EXPRESS®
CORPORATE OFFICE:
160 SW 12th AVE, SUITE 106
DEERFIELD BEACH, FL 33442
(954) 354-0660 | (866) 396-9999
TEAM@ENGINEERINGEXPRESS.COM
ENGINEERINGEXPRESS.COM

GRAHAM ARCHITECTURAL PRODUCTS
1551 MT. ROSE AVENUE | YORK, PA 17403
PH: (717) 849-8100
SERIES GT6700 TERRACE DOOR
FLORIDA STATEWIDE APPROVAL
FLORIDA BUILDING CODE 7TH EDITION (2020)

REMARKS	DRWN	CHKD	DATE
FBC 2020 UPDATE	TAE	AJP	04/01/21

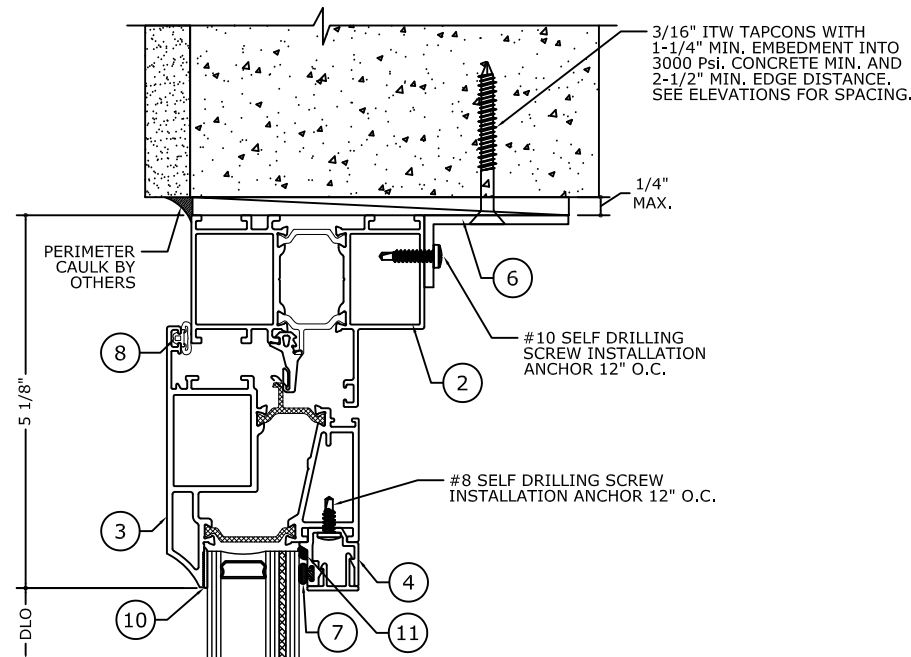
COPYRIGHT ENGINEERING EXPRESS®
21-38785

SCALE: NTS UNLESS NOTED

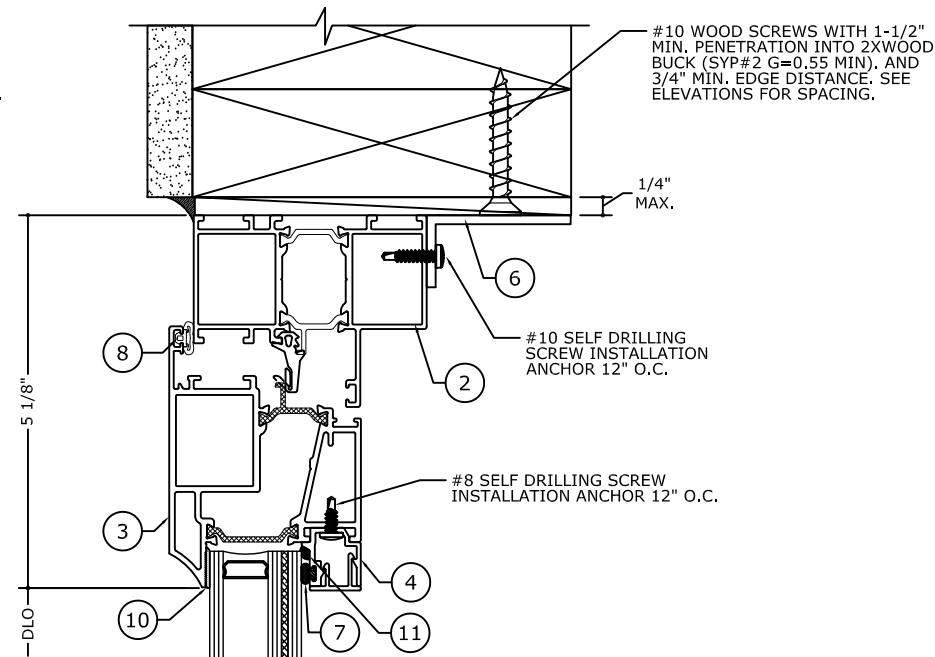
08

13

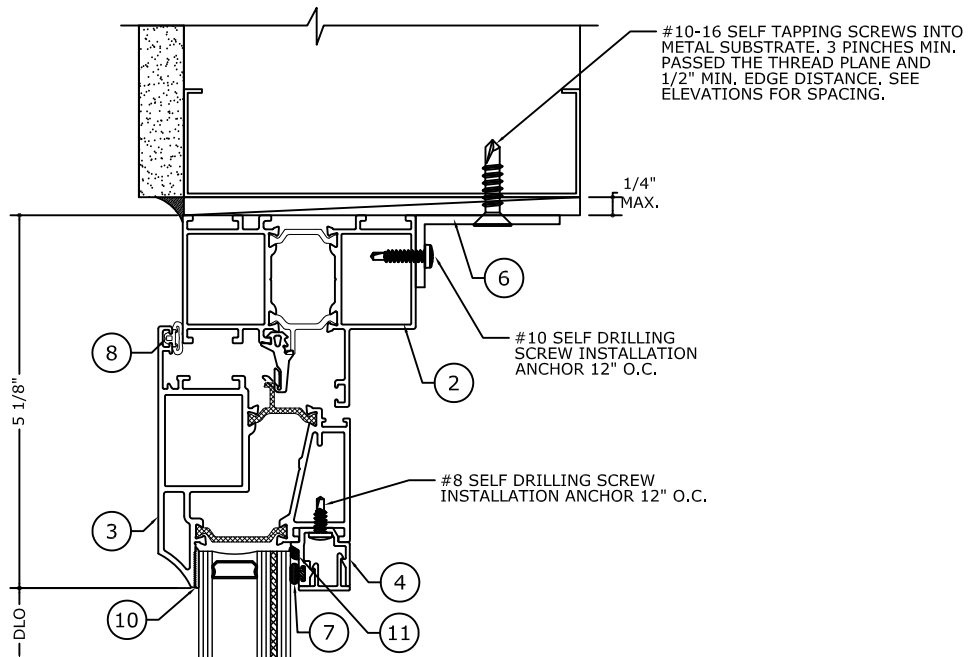
HEAD DETAILS



1 HEAD DETAIL
PRE-SET PANNING
SCREW APPLIED BEAD



1.1 HEAD DETAIL
PRE-SET PANNING
SCREW APPLIED BEAD



1.2 HEAD DETAIL
PRE-SET PANNING
SCREW APPLIED BEAD

NOTE: REFER TO SYSTEM INSTALLATION MANUAL FOR FABRICATION AND ASSEMBLY INSTRUCTIONS.

FRANK BENNARDO, P.E.
PE# 0046549 CA, 9885



04/19/2021

FL# 38537.1

ENGINEERING EXPRESS®
CORPORATE OFFICE:
160 SW 12th AVE, SUITE 106
DEERFIELD BEACH, FL 33442
(954) 354-0660 | (866) 396-9999
TEAM@ENGINEERINGEXPRESS.COM
ENGINEERINGEXPRESS.COM

GRAHAM ARCHITECTURAL PRODUCTS
1551 MT. ROSE AVENUE | YORK, PA 17403
PH: (717) 849-8100
SERIES GT6700 TERRACE DOOR
FLORIDA STATEWIDE APPROVAL
FLORIDA BUILDING CODE 7TH EDITION (2020)

REMARKS	DRWN	CHKD	DATE
FBC 2020 UPDATE	TAE	AJP	04/01/21

COPYRIGHT ENGINEERING EXPRESS®

21-38785

SCALE: NTS UNLESS NOTED

09 13

C:\Users\joem\appdata\local\temp\7248\21-38785 GT700 Terrace Door (2020 FSA).dwg 04/19/2021 - 5:17pm joem

SILL DETAILS

FRANK BENNARDI, P.E.
PE# 0046549 CA, 9885



04/19/2021

FL# 38537.1

ENGINEERING EXPRESS®
CORPORATE OFFICE:
160 SW 12th AVE, SUITE 106
DEERFIELD BEACH, FL 33442
(954) 354-0660 | (866) 396-9999
TEAM@ENGINEERINGEXPRESS.COM
ENGINEERINGEXPRESS.COM

GRAHAM ARCHITECTURAL PRODUCTS
1551 MT. ROSE AVENUE | YORK, PA 17403
PH: (717) 849-8100
SERIES GT6700 TERRACE DOOR
FLORIDA STATEWIDE APPROVAL
FLORIDA BUILDING CODE 7TH EDITION (2020)

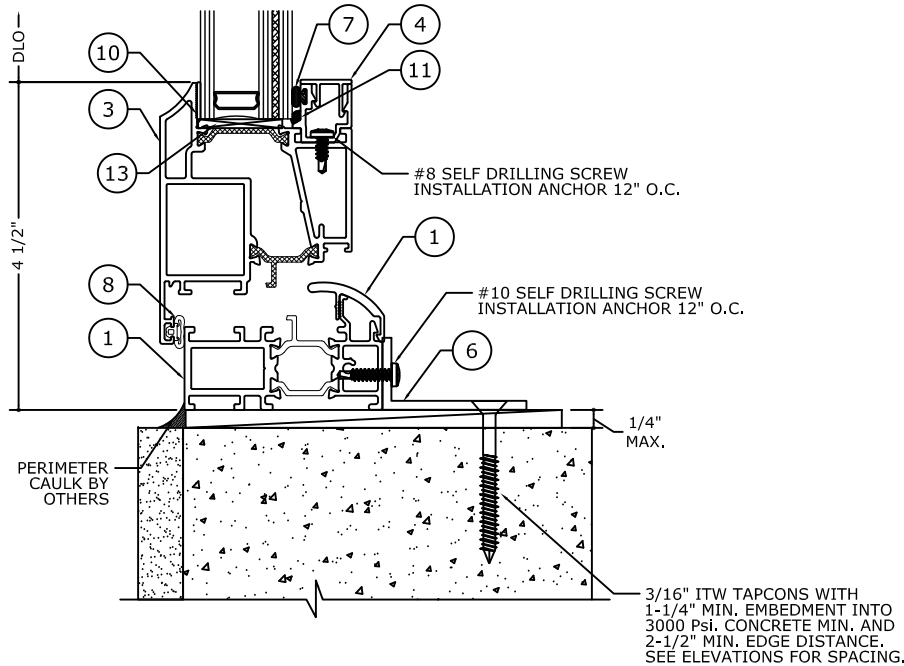
REMARKS	DRWN	CHKD	DATE
FBC 2020 UPDATE	TAE	AJP	04/07/21

COPYRIGHT ENGINEERING EXPRESS®

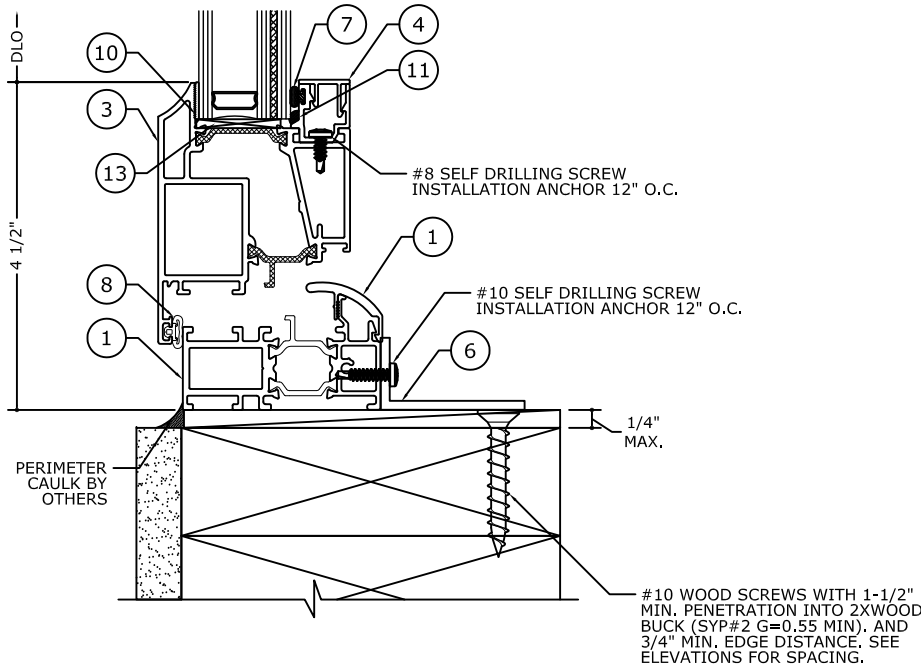
21-38785

SCALE: NTS UNLESS NOTED

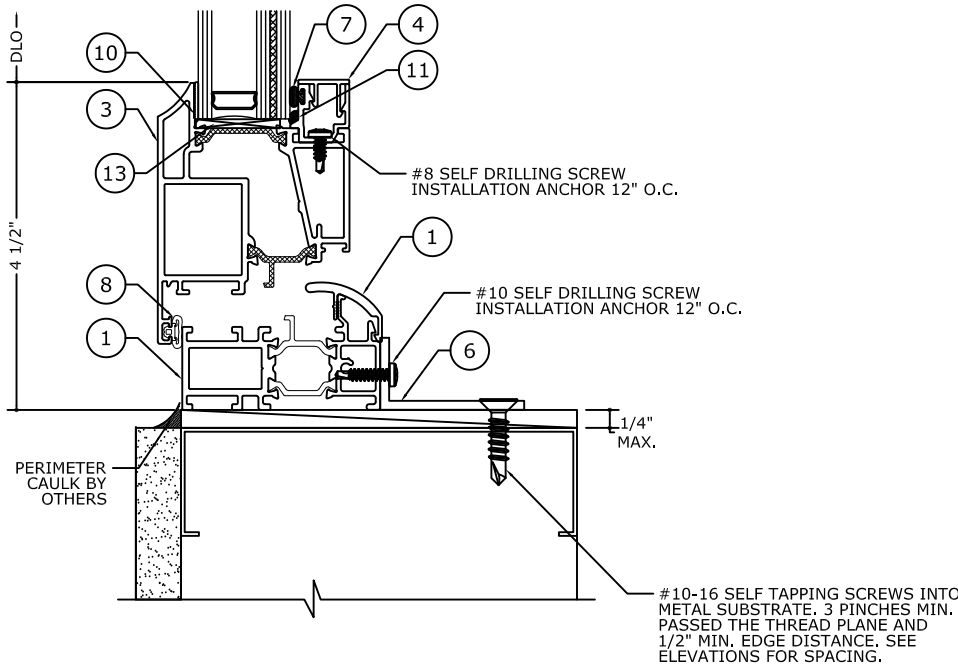
10 13



2 SILL DETAIL
PRE-SET PANNING
SCREW APPLIED BEAD



2.1 SILL DETAIL
PRE-SET PANNING
SCREW APPLIED BEAD



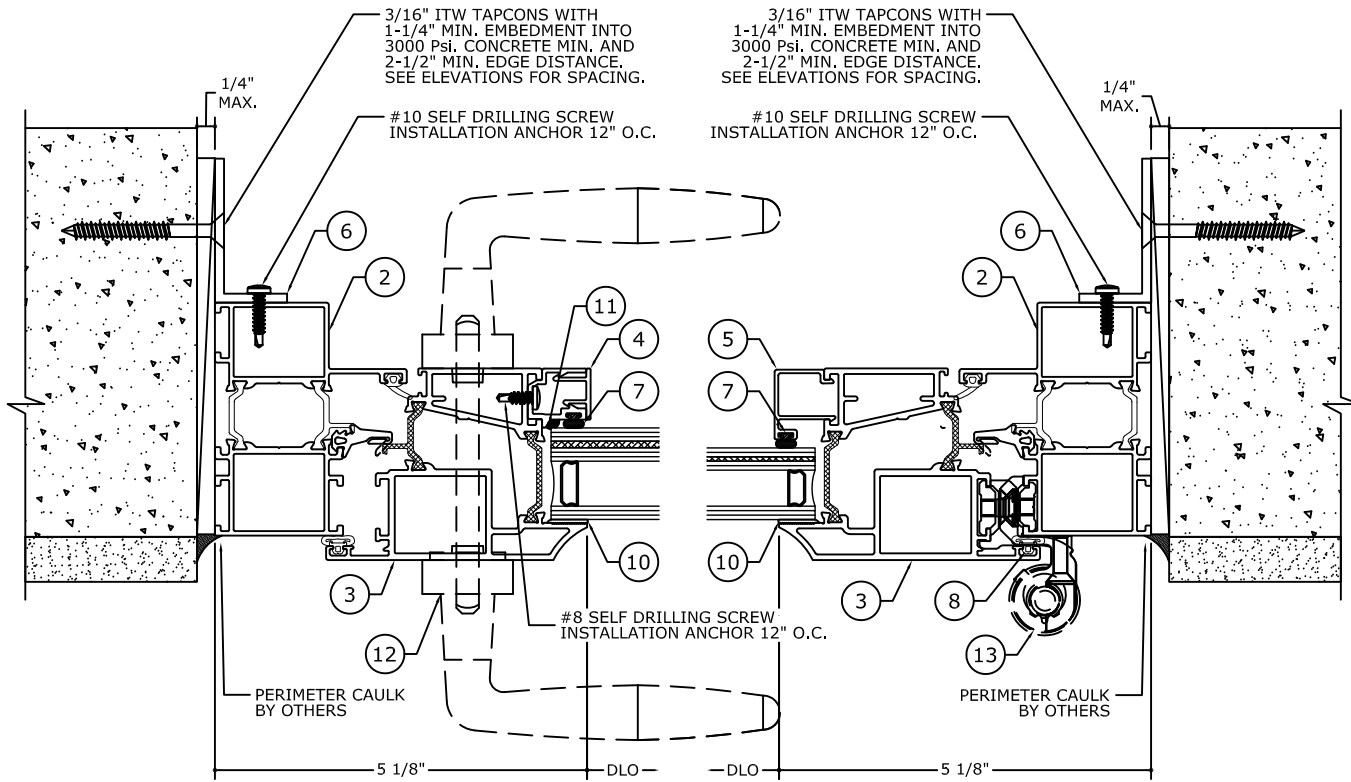
2.2 SILL DETAIL
PRE-SET PANNING
SCREW APPLIED BEAD

NOTE: REFER TO SYSTEM INSTALLATION MANUAL FOR FABRICATION AND ASSEMBLY INSTRUCTIONS.

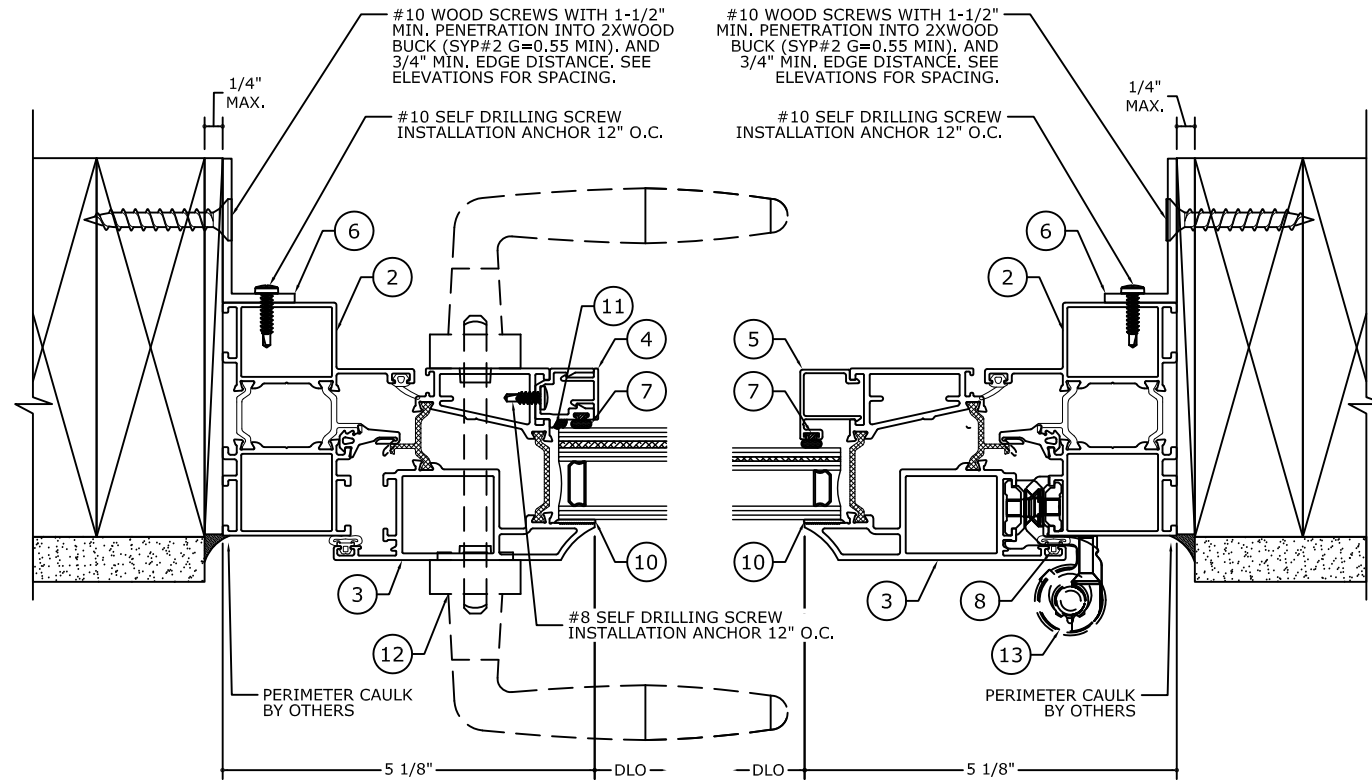
C:\Users\joem\appdata\local\temp\AcPublish_7248\21-38785 GT700 Terrace Door (2020 FSA).dwg

04/19/2021 - 5:17pm joem

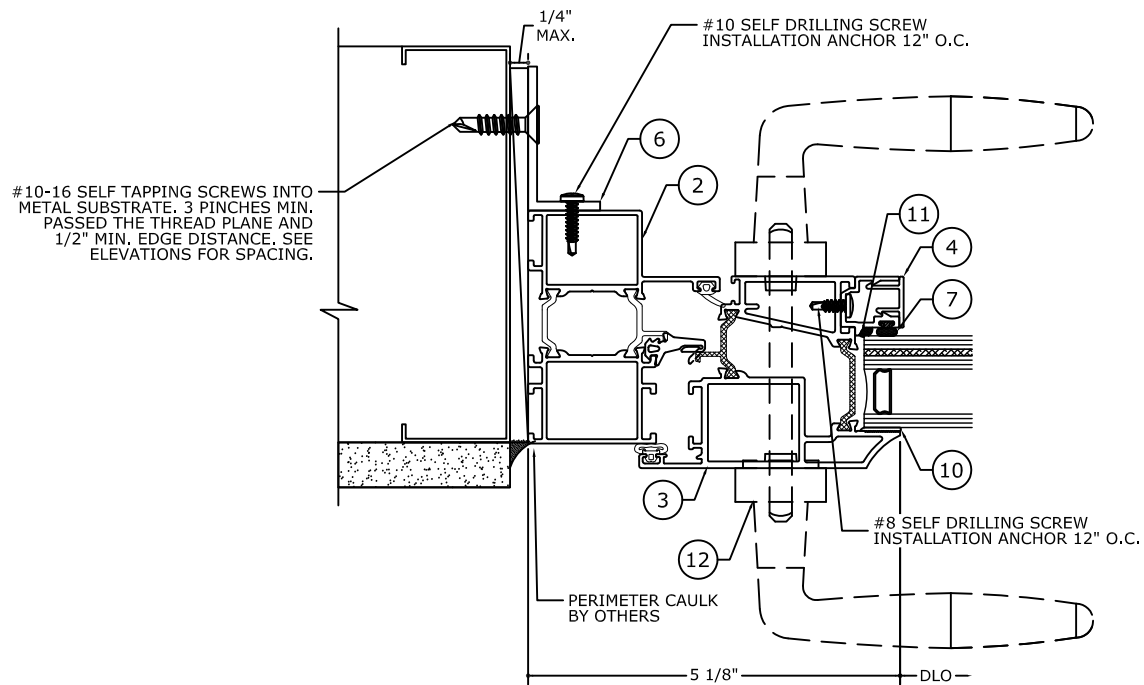
VERTICAL JAMB DETAILS



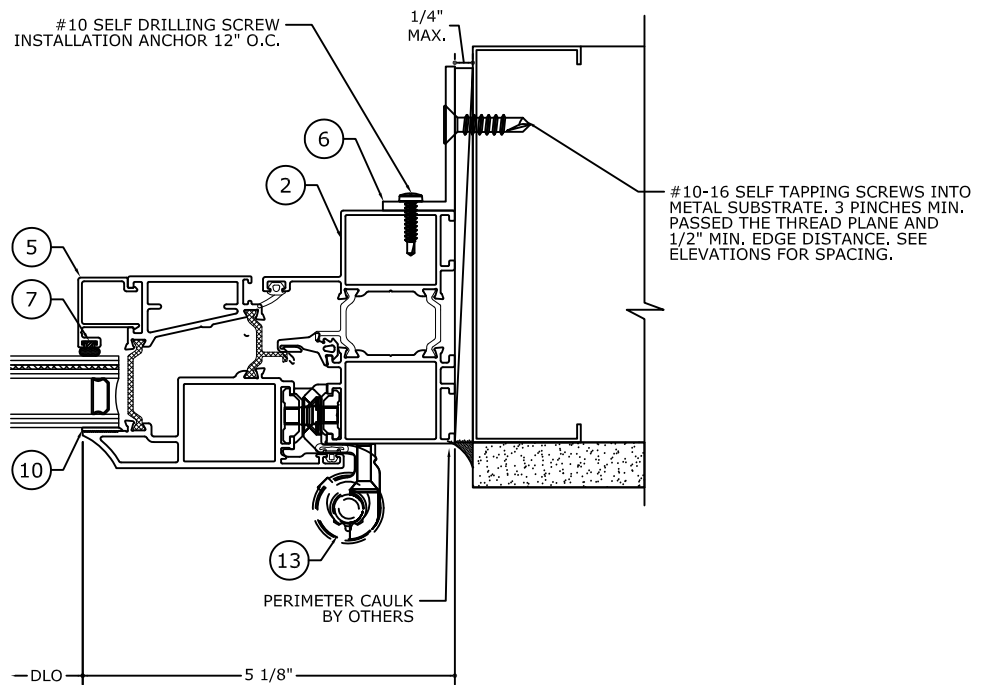
3 JAMB DETAIL
PRE-SET PANNING
SCREW APPLIED BEAD



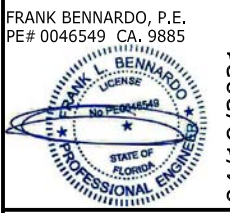
3.1 JAMB DETAIL
PRE-SET PANNING
SCREW APPLIED BEAD



3.2 JAMB DETAIL
PRE-SET PANNING
SCREW APPLIED BEAD



NOTE: REFER TO SYSTEM INSTALLATION MANUAL FOR FABRICATION AND ASSEMBLY INSTRUCTIONS.



FRANK BENNARDO, P.E.
PE# 0046549 CA. 9885

ENGINEERING EXPRESS®
CORPORATE OFFICE:
160 SW 12th AVE, SUITE 106
DEERFIELD BEACH, FL 33442
(954) 354-0660 | (866) 396-9999
TEAM@ENGINEERINGEXPRESS.COM
ENGINEERINGEXPRESS.COM

GRAHAM ARCHITECTURAL PRODUCTS
1551 MT. ROSE AVENUE | YORK, PA 17403
PH: (717) 849-8100
SERIES GT6700 TERRACE DOOR
FLORIDA STATEWIDE APPROVAL
FLORIDA BUILDING CODE 7TH EDITION (2020)

REMARKS	DATE
FBC 2020 UPDATE	04/01/21
DRWN	CHKD
TAE	AJP

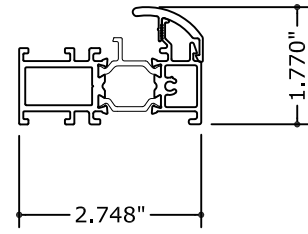
21-38785

SCALE: NTS UNLESS NOTED

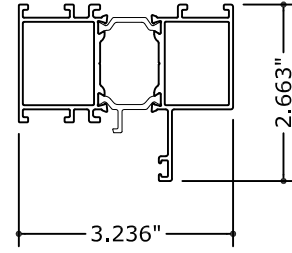
C:\Users\joem\appdata\local\temp\AcPublish_724821-38785 GT700 Terrace Door (2020 FSA).dwg 04/19/2021 - 5:17pm joem

04/19/2021

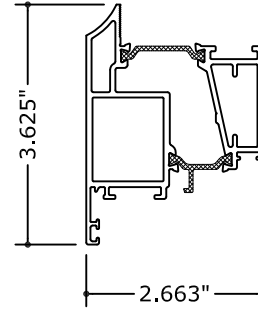
SYSTEM COMPONENTS



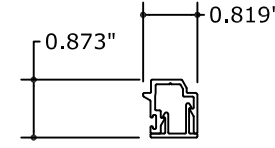
① FRAME THRESHOLD w/COVER
6063-T5



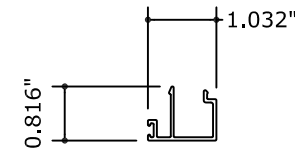
② FRAME HEAD & JAMB
6063-T5



③ VENT RAIL
6063-T5



④ GLAZING BEAD SCREW APPLIED
6063-T5



⑤ GLAZING BEAD
6063-T5

FRANK BENNARDO, P.E.
PE# 0046549 CA. 9885



04/19/2021

FL# 38537.1



CORPORATE OFFICE:
160 SW 12th AVE, SUITE 106
DEERFIELD BEACH, FL 33442
(954) 354-0660 | (866) 396-9999
TEAM@ENGINEERINGEXPRESS.COM
ENGINEERINGEXPRESS.COM

GRAHAM ARCHITECTURAL PRODUCTS
1551 MT. ROSE AVENUE | YORK, PA 17403
PH: (717) 849-8100

SERIES GT6700 TERRACE DOOR
FLORIDA STATEWIDE APPROVAL
FLORIDA BUILDING CODE 7TH EDITION (2020)

REMARKS	DRWN	CHKD	DATE
FBC 2020 UPDATE	TAE	AJP	04/07/21
	-	-	-
	-	-	-
	-	-	-

COPYRIGHT ENGINEERING EXPRESS®

21-38785

SCALE: NTS UNLESS NOTED

BILL OF MATERIALS

ITEM NO.	DESCRIPTION	MATERIAL	MANUFACTURER
1	FRAME THRESHOLD w/ COVER	ALUM. 6063-T5	
2	FRAME HEAD & JAMB	ALUM. 6063-T5	
3	VENT RAIL	ALUM. 6063-T6	
4	GLAZING BEAD SCERW APPLIED	ALUM. 6063-T6	
5	GLAZING BEAD	ALUM. 6063-T6	
6	ALUMINUM CLIP 1/8"	ALUM. 6063-T6	
7	FOAM BULB GASKET	FOAM BULB	AMESBURY/TRUTH
8	CENTER GASKET	RUBBER	LAUREN
9	GLAZING COMPOUND	SILICONE	DOWSIL 2400
10	GLAZING COMPOUND	SILICONE	DOWSIL 995
11	DOOR HANDLE	ZINC/BRASS	AMESBURY/TRUTH
12	DOOR HINGE	ALUMINUM	GIESSE
13	GLAZING BLOCK	-	-

FRANK BENNARDI, P.E.
PE# 0046549 CA, 9885



04/19/2021

FL# 38537.1

ENGINEERING EXPRESS®
CORPORATE OFFICE:
160 SW 12th AVE, SUITE 106
DEERFIELD BEACH, FL 33442
(954) 354-0660 | (866) 396-9999
TEAM@ENGINEERINGEXPRESS.COM
ENGINEERINGEXPRESS.COM

GRAHAM ARCHITECTURAL PRODUCTS
1551 MT. ROSE AVENUE | YORK, PA 17403
PH: (717) 849-8100

SERIES GT6700 TERRACE DOOR
FLORIDA STATEWIDE APPROVAL
FLORIDA BUILDING CODE 7TH EDITION (2020)

REMARKS	DRWN	CHKD	DATE
FBC 2020 UPDATE	TAE	AJP	04/07/21
	-	-	-
	-	-	-
	-	-	-

COPYRIGHT ENGINEERING EXPRESS®

21-38785

SCALE: NTS UNLESS NOTED

13