

## W4500 WINDOW WALL



### W4500 SERIES QUICK VIEW:

Factory glazed window and door system for use in high-rise new construction applications.



### STANDARD FEATURES

- Operable window and door integrated window wall system factory glazed for optimum quality control
- Aluminum slab covers for seamless continuity
- Anchorage at floor and ceiling slabs
- EPDM dry glazed to accommodate field glazing
- Thermal strut technology for superior U-values

### OPTIONAL FEATURES

- Customizable window configurations
- Dual finish (two-tone color) option

### TESTING DATA

Window Wall Section	AIR (cfm/ft <sup>2</sup> ) at 50 mph	WATER (psf)	DESIGN PRESSURE (psf)	STRUCTURAL OVERLOAD (psf)	U-VALUE (BTU/hr/ft <sup>2</sup> /°F) <sup>1</sup>	CRF
FIXED	0.10	12	37	55.5	0.19 – 0.35	72
OPERABLE					0.30 – 0.51	70

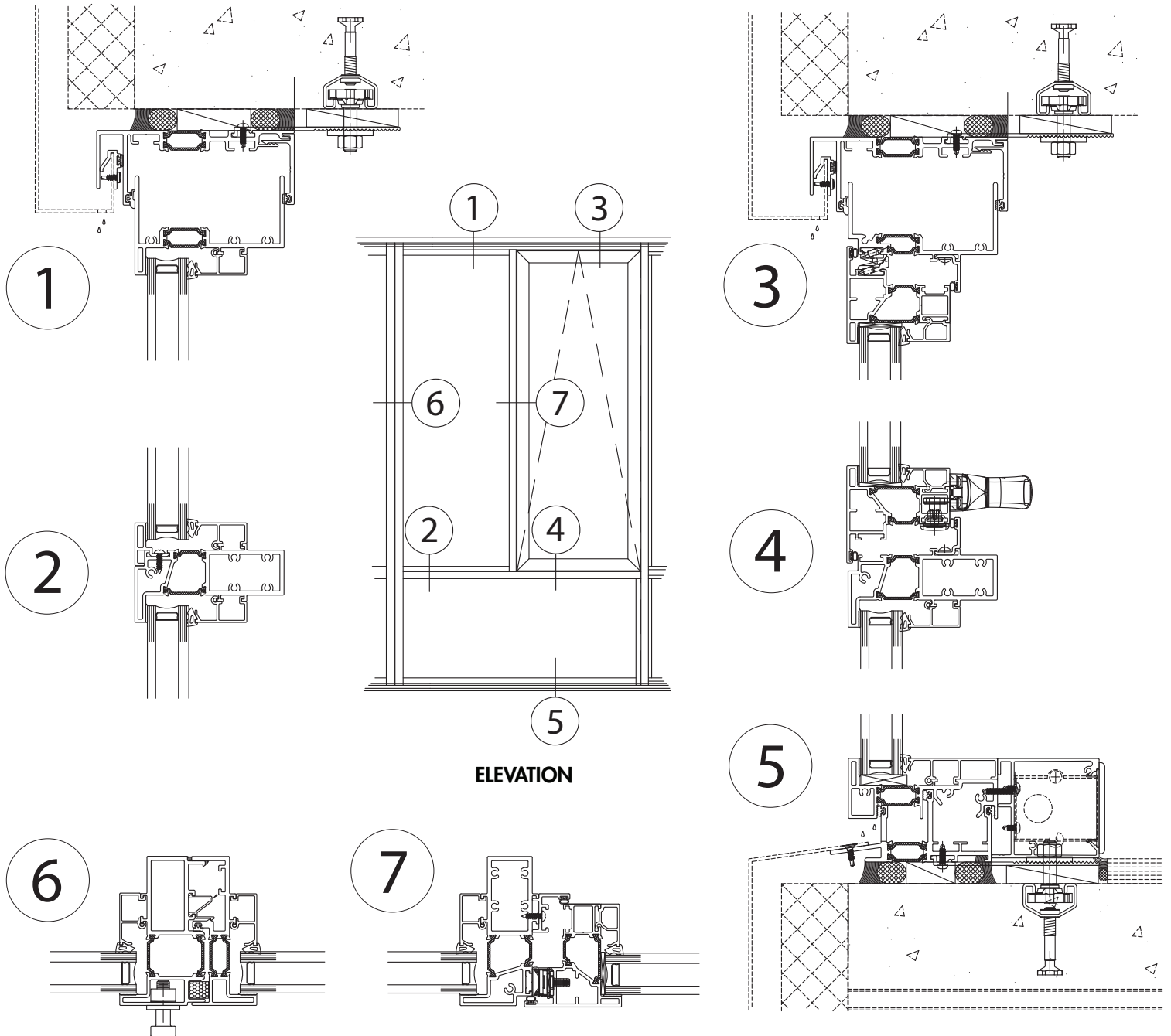
<sup>1</sup> U-values will vary depending upon glazing selected



Our products are tested to the standards of and certified by the American Architectural Manufacturer's Association and the National Fenestration Rating Council.



## Typical Window Wall Details



Our products are tested to the standards of and certified by the American Architectural Manufacturer's Association and the National Fenestration Rating Council.

