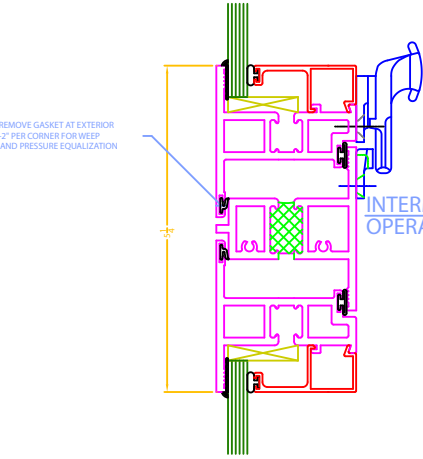
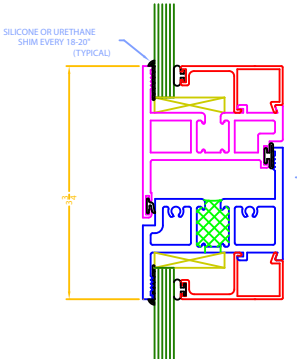


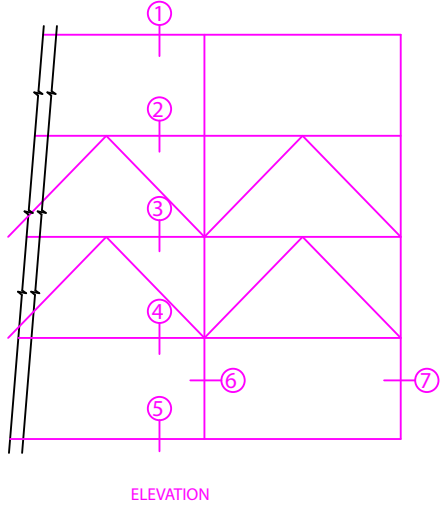
INTERMEDIATE DETAIL FIXED TO OPERABLE



INTERMEDIATE DETAIL OPERABLE TO OPERABLE



INTERMEDIATE DETAIL FIXED TO OPERABLE



- NOTES:**
1. PROVIDE END DAM AND SEALANT AT ALL JOINTS.
 2. PROVIDE SEALANT AT SCREWS FOR LOCKING HANDLE STOP.
 3. INSTALLATION INSTRUCTIONS:
 - REMOVE SASHES
 - CLEAN OPENINGS
 - REMOVE OLD HARDWARE
 - SHIM AND BLOCK WHERE NECESSARY
 - INSTALL PRESET PANNING W/SPRING CLIPS FASTENED TO REMAINING FRAME
 - PUSH NEW WINDOW UNIT IN PANNING SYSTEM
 - FASTEN ANGLE CLIPS TO WINDOW FRAME AND EXISTING WOOD FRAME 18" O/C (FOLLOW INSTRUCTION REGARDING SCREWS AND WASHERS)

| | |
|-----------------------|-------|
| SHEET NO. | |
| SCALE: | |
| REVISIONS | DATE |
| A. SEALANT NOTE ADDED | 09-20 |
| DRAWN BY: | DATE: |
| CHECK BY: | DATE: |
| PROJECT: 6500 | |
| SERIES: 6500 | |
| MODEL: 6500S | |
| DRAWING NO. | |
| SHEET NO. | |