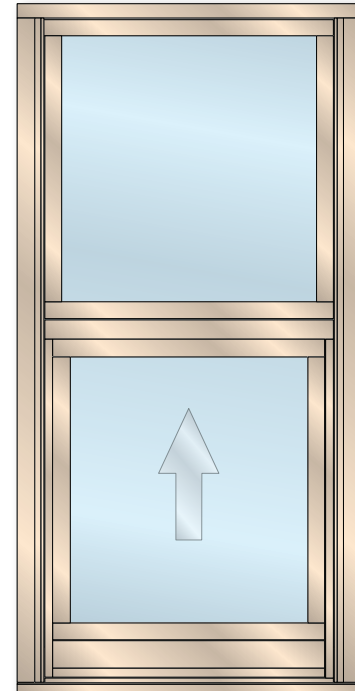




SHOCK TUBE TESTED • THIRD PARTY CERTIFIED • MANUFACTURED IN THE USA

**STANDARD B2000 FEATURES**

- Single Hung Side-Load windows for blast mitigation
- Provides GSA level C protection against explosive attacks
- Meets DoD UFC 4-010-01 criteria
- Trim & clip or receptor anchoring system
- 1" insulating glass construction using industry standard laminated technology
- Utilizes standard locking hardware
- Mulls to 3¼" frame fixed and operable products
- Sash easily removes from frame for maintenance & cleaning
- Removable take-out clips to prevent unauthorized sash removal
- Full-length extruded lift handles



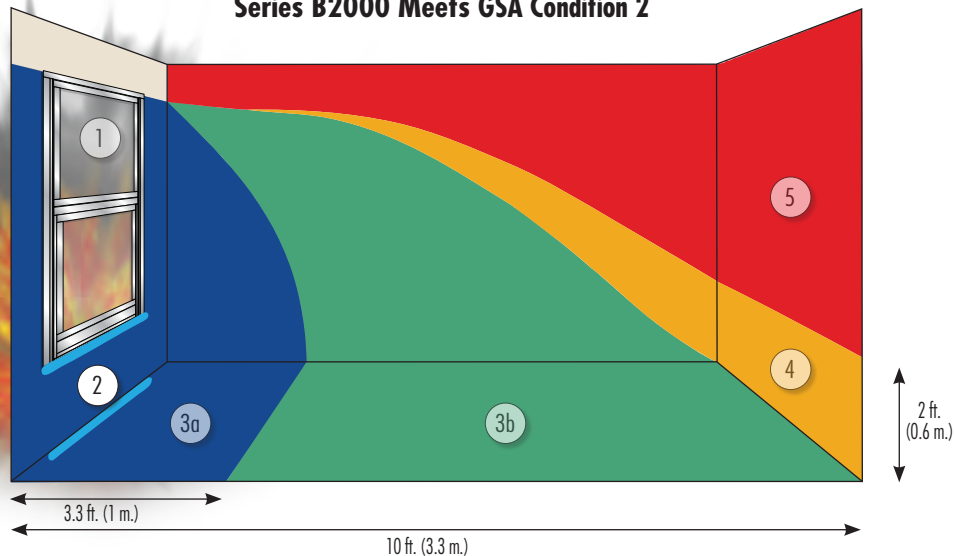
Blast-Resistant Single Hung Side-Load Window

**SERIES B2000 PERFORMANCE**

WINDOW TYPE	FRAME DEPTH (inches)	SERIES	DESIGNED BLAST PRESSURE (psi)	POSITIVE PHASE IMPULSE (psi-msec)	WINDOW SIZE (inches)	GLAZING COMPOSITION (inches)	TESTING & CERTIFICATIONS		
							Test Methods	Qualified	Certification
Aluminum Side Load Single Hung	Standard	B2000	4.4	34.3	48 x 66	¼ annealed, ½ as, ¼ lami	ASTM F 1642	ASTM "Minimal Hazard" GSA Condition 2 UFC 4-010-01	ATI Security Fenestration Certification Program
	Nail Fin		6.6	48	45½ x 63¾	¾ annealed, 17/32 as, ¼ lami	ASTM F 1642	ASTM "Minimal Hazard" GSA Condition 2 UFC 4-010-01	ATI Security Fenestration Certification Program

Products comply with Unified Facilities Criteria UFC 4-010-01; 8 October 2003 Including change 1, 22 January 2007 DoD Minimum Antiterrorism Standards for Buildings

**Series B2000 Meets GSA Condition 2**

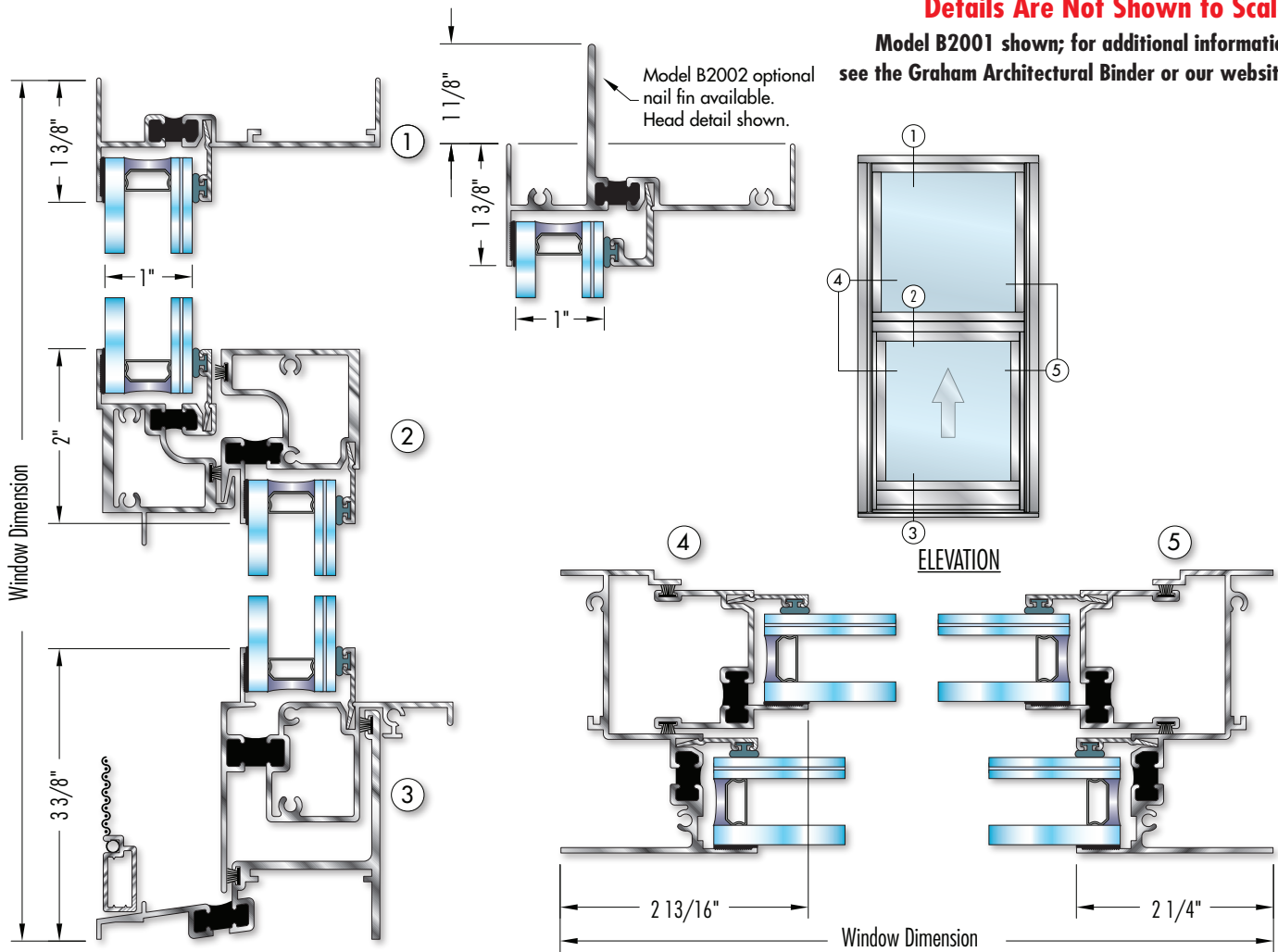


**Series B2000** 3¼" Frame Depth  
**BLAST-RESISTANT**  
**SINGLE HUNG w/Side Load Sash**



**Details Are Not Shown to Scale**

**Model B2001 shown; for additional information see the Graham Architectural Binder or our website.**



**Series B2000 ACCESSORIES**



Window Series:  
**B2000 SINGLE HUNG (Side-Load)**  
 General Specifications & Details

See website for other available configurations

- Nominal Frame/Sill Wall Thickness: 0.062/0.094"
- Test Size: 48" x 66"
- Glazing: ¼ ann, ½ spacer, ¼ lami
- Muntins: Grids between lites of IG unit or exterior-applied
- Curved Shapes: Radius tops and arches available with mullied fixed units
- Maximum Sash Weight: Standard balancing of both sash to 80 lbs. Optional heavy-duty system to 120 lbs. Depends on height-to-width ratio (please contact factory)
- Finish Options: AAMA 2603, AAMA 2604, AAMA 2605, Powder Coat, Anodized

- Hardware: White bronze sweep lock with keeper
- Accessories: Frame Family: 3¼", Fixed Lite Option System: 1200, Mullions: Stacking: Integral & fixed-stack mull, Side: 3-piece mull, Panning: Available, Trims: Available, Receptor Systems: Available
- Exceptions: Call Graham sales rep or see website for more information.