

Fixed – Historic – 4”

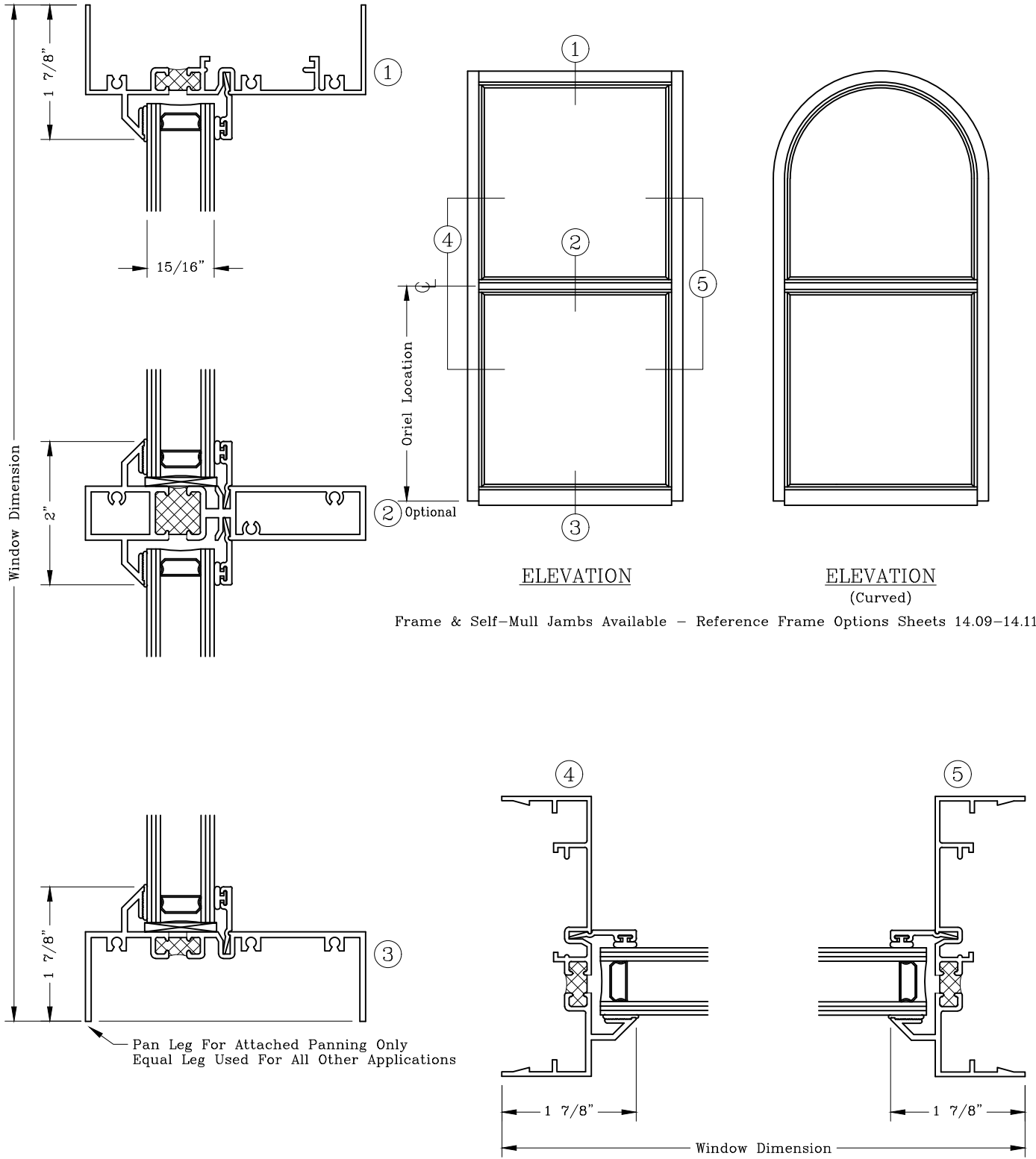


Series: 1400

Manufacturing Code: 1401

Drawing 1/2 Scale – For Custom Size Drawing Contact Graham

Note: Sealant Not Shown On Details. Refer To General Installation Instructions.



Frame & Self-Mull Jambs Available – Reference Frame Options Sheets 14.09–14.11

Graham Architectural Products reserves the right to change, add, cancel, remove or otherwise modify the details illustrated without prior notice.

1551 Mt. Rose Avenue, York, Pennsylvania 17403-2909 800/755-6274 Fax: 800/366-5097

0922 – 14.01

Web Site: www.grahamwindows.com

Fixed Flat - 4"

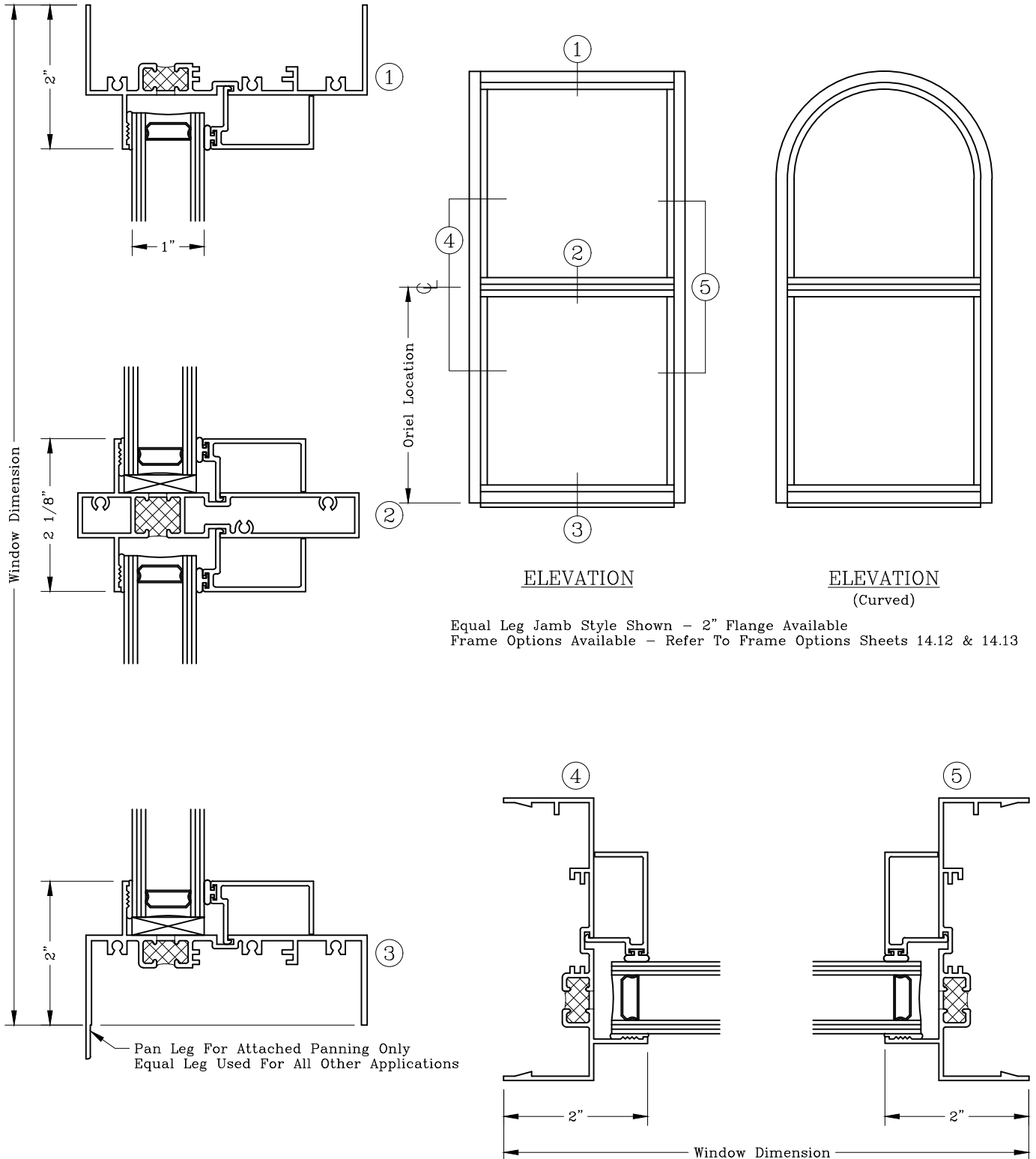


Series: 1400

Manufacturing Code: 1405

Drawing 1/2 Scale - For Custom Size Drawing Contact Graham

Note: Sealant Not Shown On Details. Refer To General Installation Instructions.



Equal Leg Jamb Style Shown - 2" Flange Available
 Frame Options Available - Refer To Frame Options Sheets 14.12 & 14.13

Graham Architectural Products reserves the right to change, add, cancel, remove or otherwise modify the details illustrated without prior notice.

1551 Mt. Rose Avenue, York, Pennsylvania 17403-2909 800/755-6274 Fax: 800/366-5097

0922 - 14.05

Web Site: www.grahamwindows.com

Frame Options – 4” Historic – .062 Wall

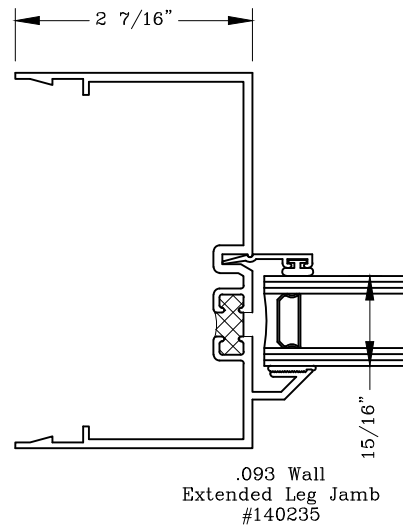
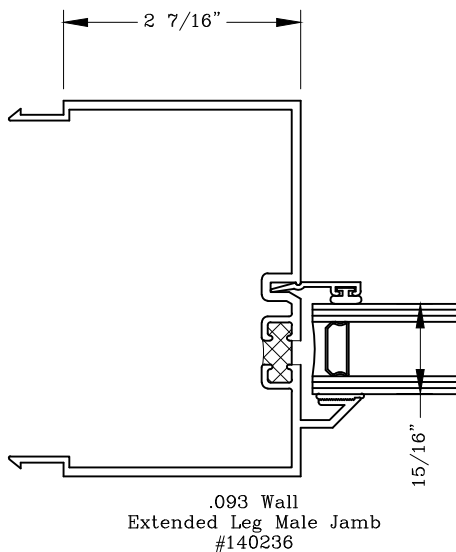
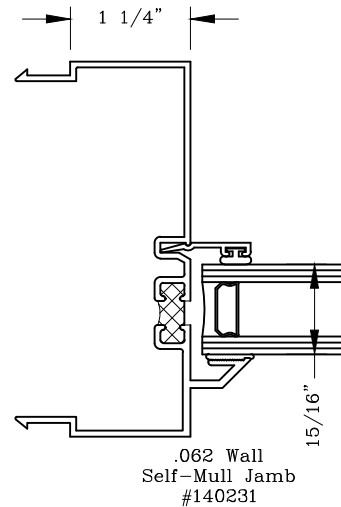
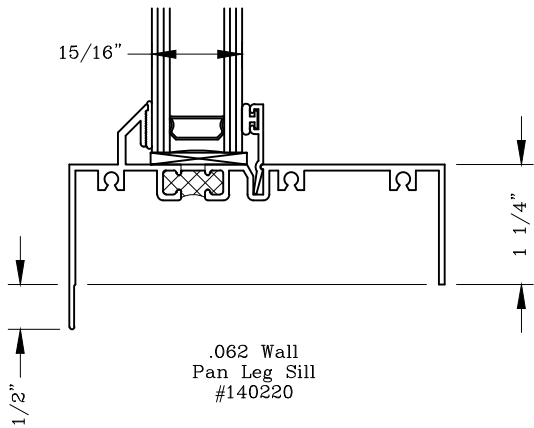
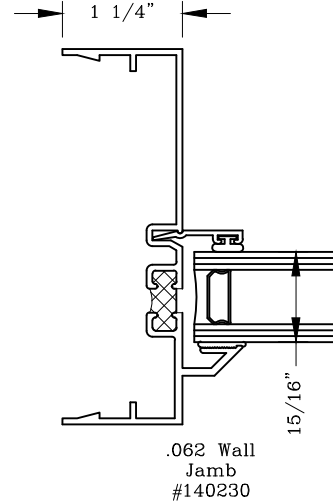
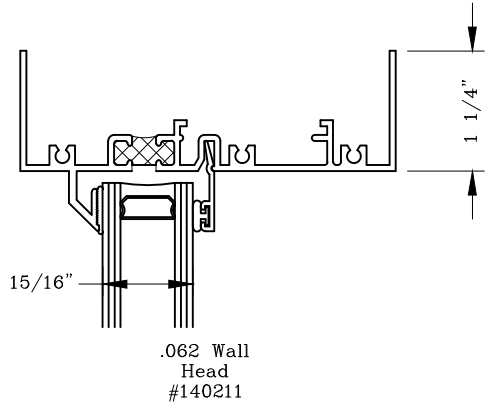


Series: 1400

Manufacturing Code: 1409

Drawing 1/2 Scale – For Custom Size Drawing Contact Graham

Note: Sealant Not Shown On Details. Refer To General Installation Instructions.



Graham Architectural Products reserves the right to change, add, cancel, remove or otherwise modify the details illustrated without prior notice.

1551 Mt. Rose Avenue, York, Pennsylvania 17403-2909 800/755-6274 Fax: 800/366-5097

Web Site: www.grahamwindows.com

0922 – 14.09

Frame Options – 4” Historic – .080 Wall

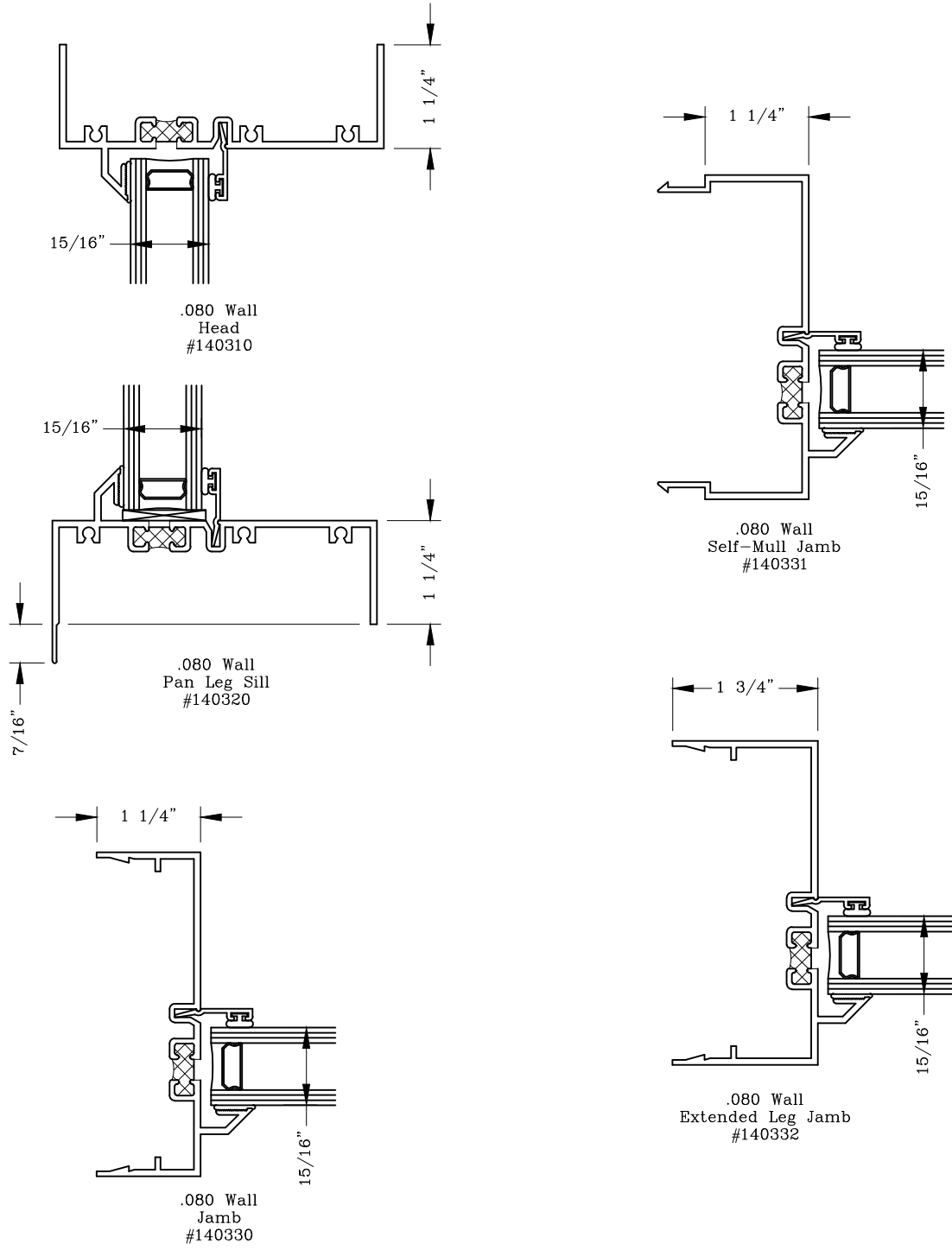


Series: 1400

Manufacturing Code: 1410

Drawing 1/2 Scale – For Custom Size Drawing Contact Graham

Note: Sealant Not Shown On Details. Refer To General Installation Instructions.



Graham Architectural Products reserves the right to change, add, cancel, remove or otherwise modify the details illustrated without prior notice.

1551 Mt. Rose Avenue, York, Pennsylvania 17403-2909 800/755-6274 Fax: 800/366-5097

0922 – 14.10

Web Site: www.grahamwindows.com

Frame Options – 4” Historic – .094 & .125 Wall

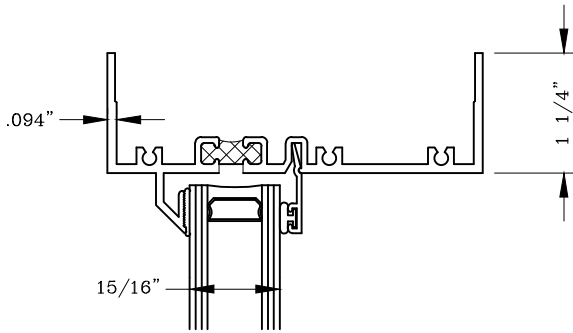


Series: 1400

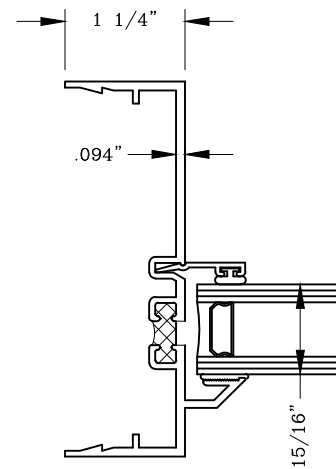
Manufacturing Code: 1411

Drawing 1/2 Scale – For Custom Size Drawing Contact Graham

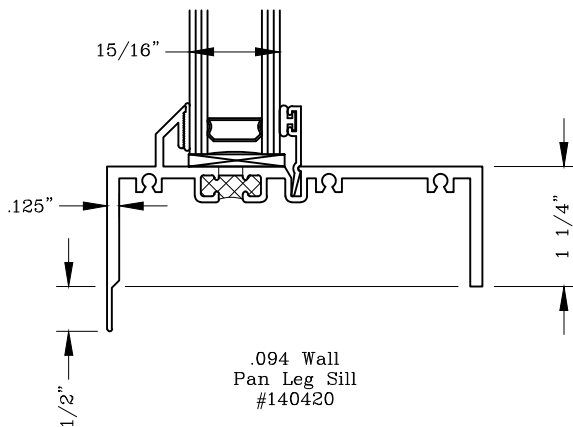
Note: Sealant Not Shown On Details. Refer To General Installation Instructions.



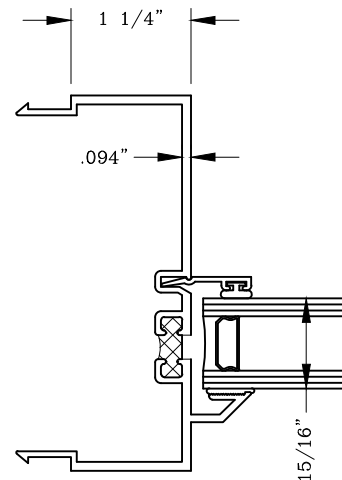
.094 Wall
Head
#140410



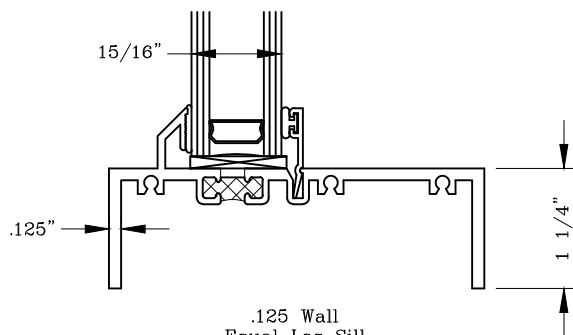
.094 Wall
Jamb
#140430



.094 Wall
Pan Leg Sill
#140420



.094 Wall
Self-Mull Jamb
#140431



.125 Wall
Equal Leg Sill
#140421

Graham Architectural Products reserves the right to change, add, cancel, remove or otherwise modify the details illustrated without prior notice.

1551 Mt. Rose Avenue, York, Pennsylvania 17403-2909 800/755-6274 Fax: 800/366-5097

0922 – 14.11

Web Site: www.grahamwindows.com

Frame Options - 4"
 Flat - .062 Wall

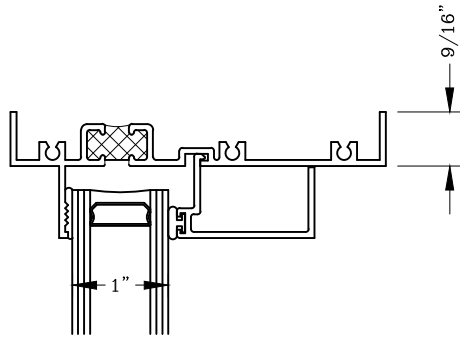


Series: 1400

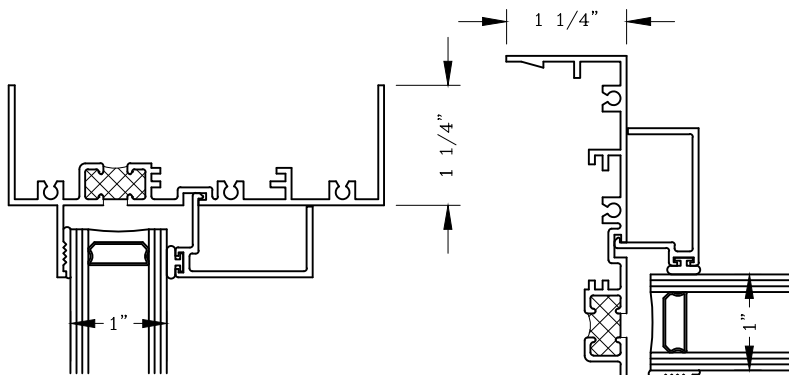
Manufacturing Code: 1412

Drawing 1/2 Scale - For Custom Size Drawing Contact Graham

Note: Sealant Not Shown On Details. Refer To General Installation Instructions.

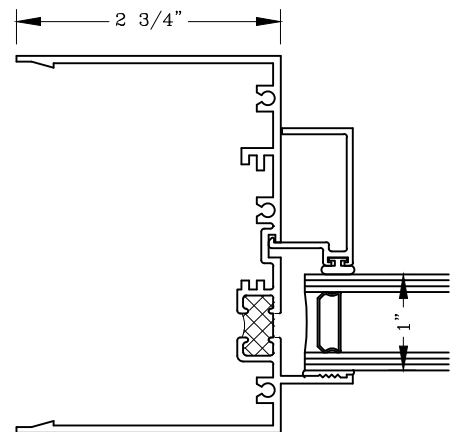


.062 Wall
 Head w/ 9/16" Leg
 #140015

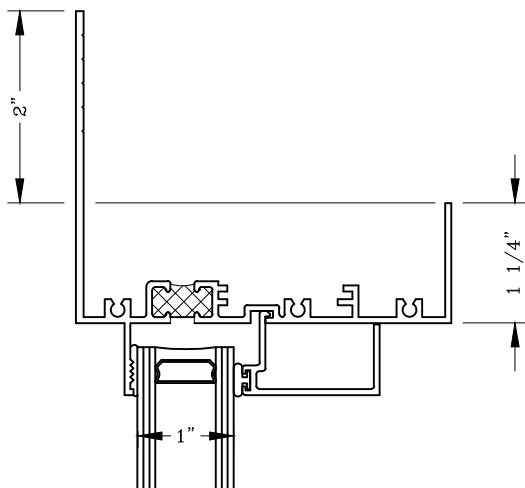


.062 Wall
 Head
 #140110

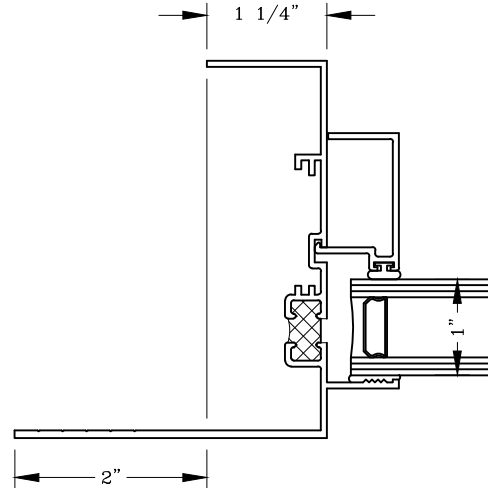
.062 Wall
 Jamb w/ Ports
 #140133



.062 Wall
 Jamb w/ Extended Legs
 #140134



.062 Wall
 Flange Head & Sill
 #140112



.062 Wall
 Flange Leg Jamb
 #140132

Graham Architectural Products reserves the right to change, add, cancel, remove or otherwise modify the details illustrated without prior notice.

1551 Mt. Rose Avenue, York, Pennsylvania 17403-2909 800/755-6274 Fax: 800/366-5097

0922 - 14.12

Web Site: www.grahamwindows.com

Frame Options - 4" Flat & Historic



Series: 1400

Manufacturing Code: 1413

Drawing 1/2 Scale - For Custom Size Drawing Contact Graham

Note: Sealant Not Shown On Details. Consult Technical Services At Factory For Sealing Procedures.

