

# Single Hung Side Load - 3 1/4" W/O Screen Track

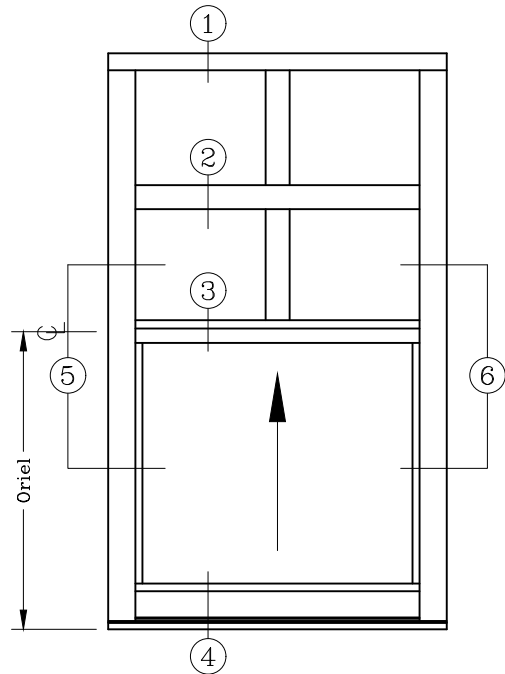
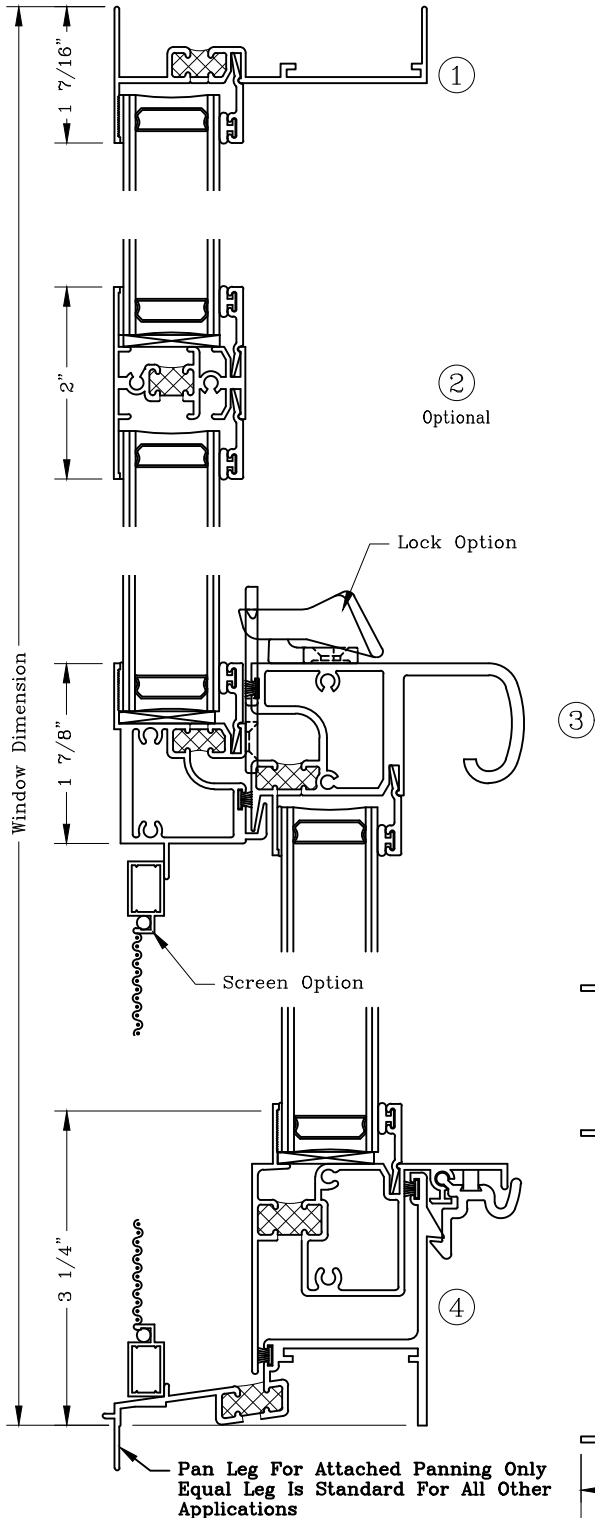


Series: 2000

Manufacturing Code: 2001

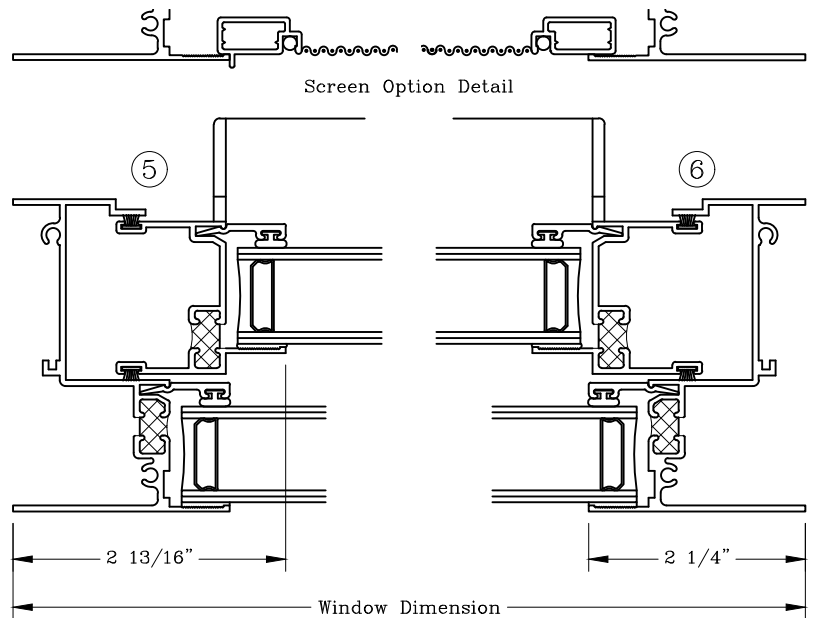
Drawing 1/2 Scale - For Custom Size Drawing Contact Graham

Note: Sealant Not Shown On Details. Refer To General Installation Instructions.



ELEVATION

Optional True Muntin Available For Fixed Lite And Operable Sash



Graham Architectural Products reserves the right to change, add, cancel, remove or otherwise modify the details illustrated without prior notice.

1551 Mt. Rose Avenue, York, Pennsylvania 17403-2909 800/755-6274 Fax: 800/366-5097

1221 - 20.01

Web Site: www.grahamwindows.com

# Single Hung Side Load - 3 1/4"

## W/ Screen Track



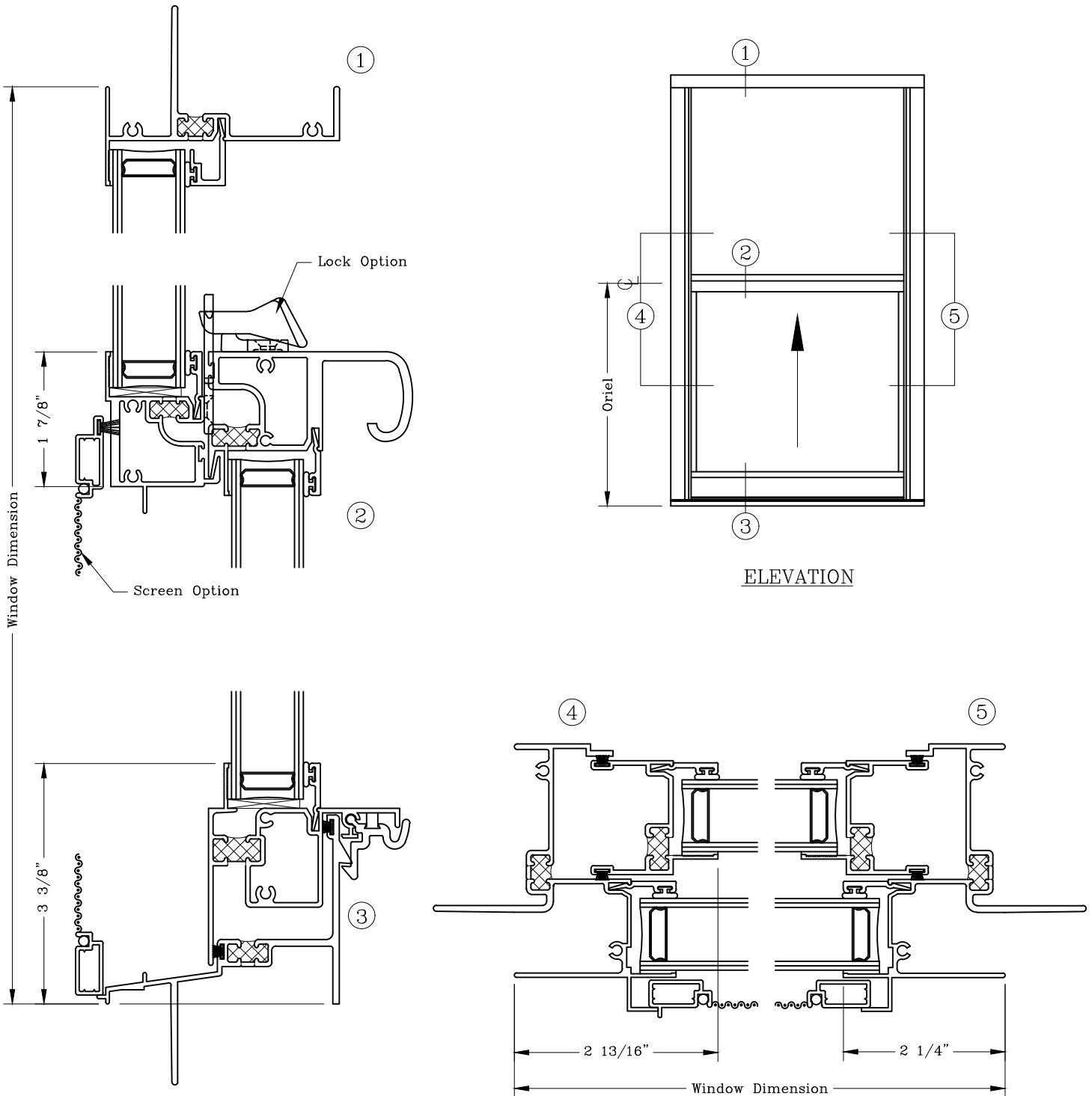
Nail Fin

Series: 2000

Manufacturing Code: 2002

Drawing 1/2 Scale - For Custom Size Drawing Contact Graham

Note: Sealant Not Shown On Details. Refer To General Installation Instructions.



Graham Architectural Products reserves the right to change, add, cancel, remove or otherwise modify the details illustrated without prior notice.

1551 Mt. Rose Avenue, York, Pennsylvania 17403-2909 800/755-6274 Fax: 800/366-5097

1221 - 20.02

Web Site: [www.grahamwindows.com](http://www.grahamwindows.com)

# Single Hung Side Load - 3 1/4" With Full Screen Track Frame

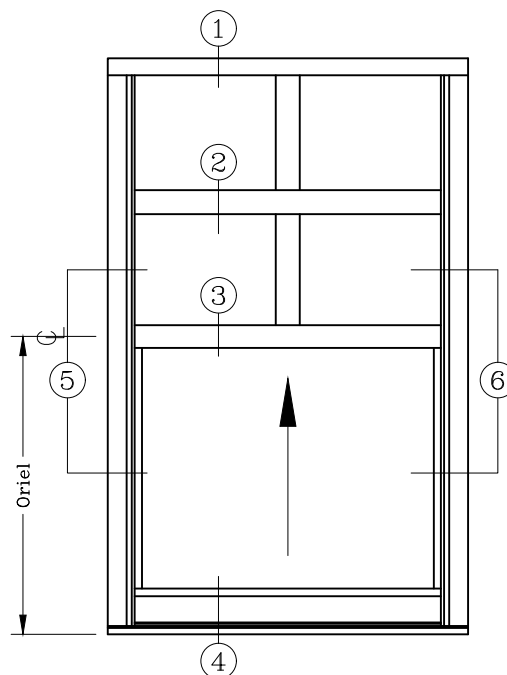
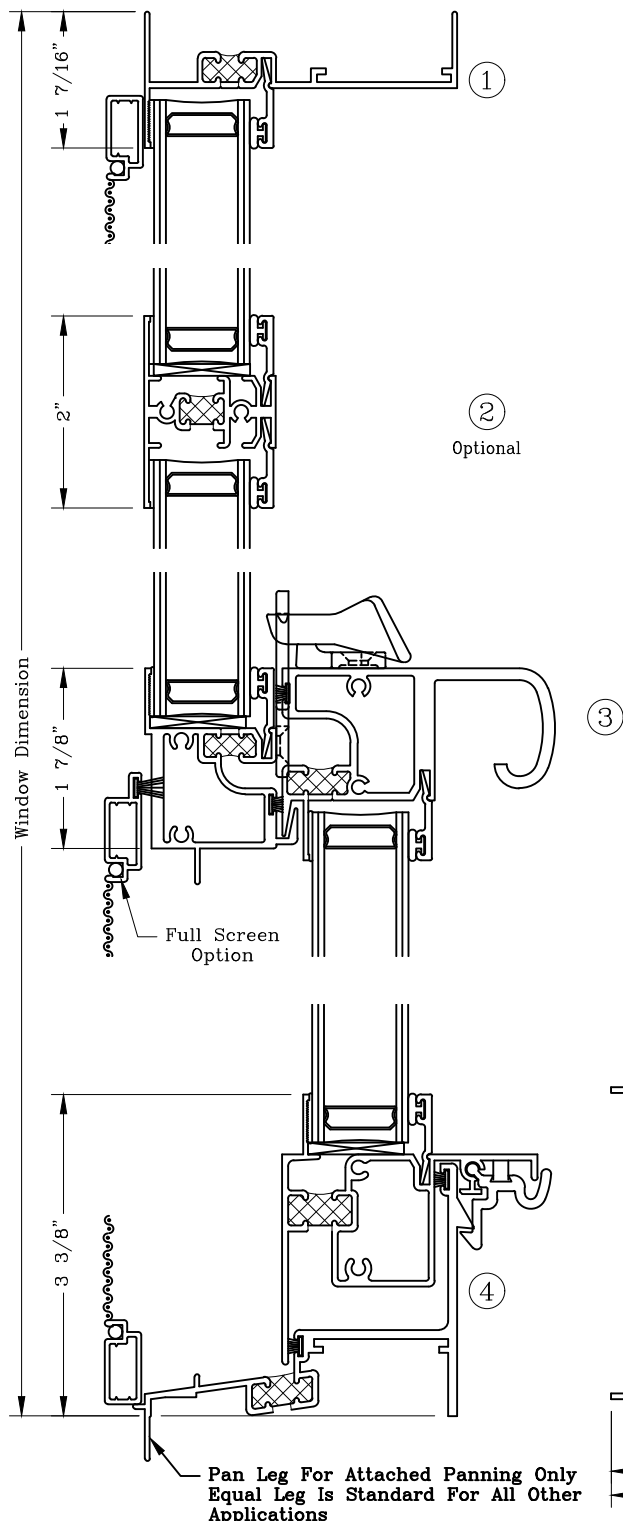


Series: 2000

Manufacturing Code: 2005

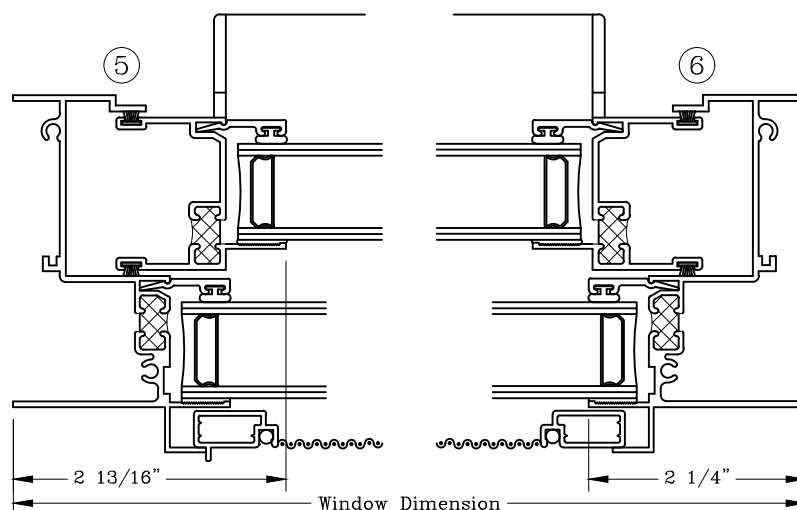
Drawing 1/2 Scale - For Custom Size Drawing Contact Graham

Note: Sealant Not Shown On Details. Refer To General Installation Instructions.



ELEVATION

Optional True Muntin Available For Fixed Lite And Operable Sash



Graham Architectural Products reserves the right to change, add, cancel, remove or otherwise modify the details illustrated without prior notice.

1551 Mt. Rose Avenue, York, Pennsylvania 17403-2909 800/755-6274 Fax: 800/366-5097

0320 - 20.05

Web Site: www.grahamwindows.com

# Single Hung Over Fixed - 3 1/4"



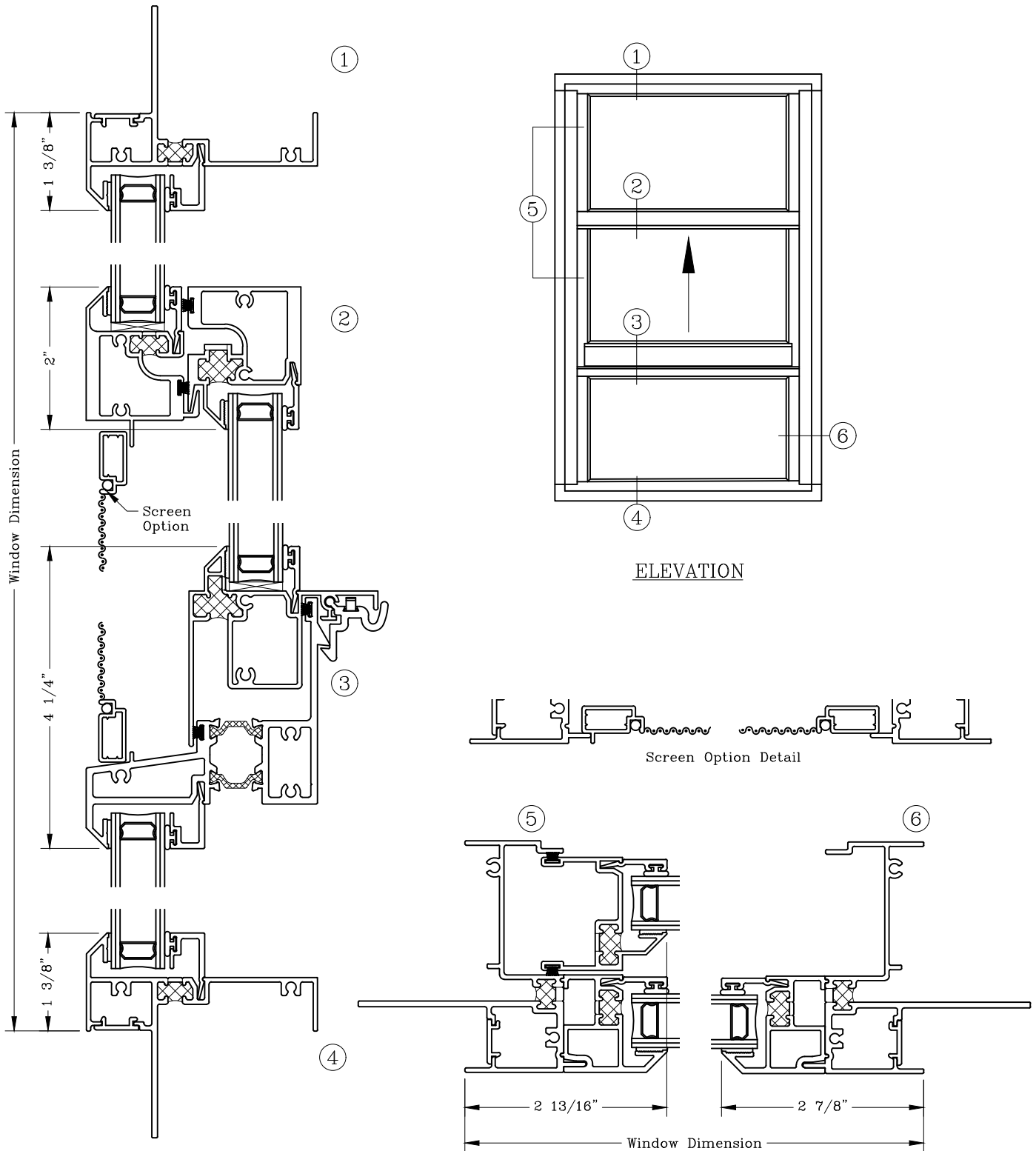
Nail Fin

Series: 2000H

Manufacturing Code: 2007

Drawing 1/2 Scale - For Custom Size Drawing Contact Graham

Note: Sealant Not Shown On Details. Refer To General Installation Instructions.



Graham Architectural Products reserves the right to change, add, cancel, remove or otherwise modify the details illustrated without prior notice.

1551 Mt. Rose Avenue, York, Pennsylvania 17403-2909 800/755-6274 Fax: 800/366-5097

1221 - 20.07

Web Site: [www.grahamwindows.com](http://www.grahamwindows.com)

# Single Hung Side Load 3 1/4" Historic Beveled Frame And Sash Egress

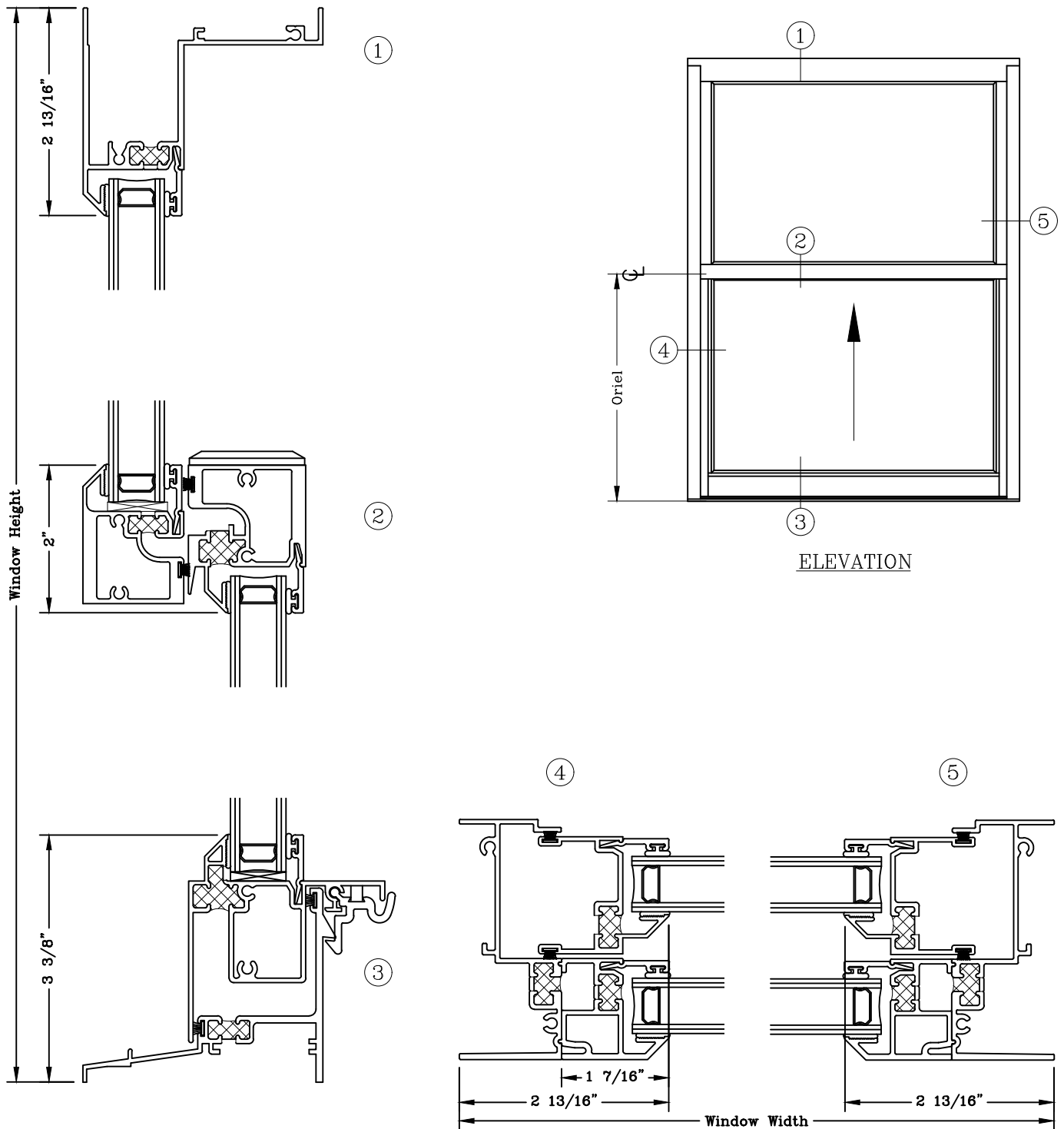


Series: 2000H

Manufacturing Code: 2008

Drawing 1/2 Scale - For Custom Size Drawing Contact Graham

Note: Sealant Not Shown On Details. Refer To General Installation Instructions.



Graham Architectural Products reserves the right to change, add, cancel, remove or otherwise modify the details illustrated without prior notice.

1551 Mt. Rose Avenue, York, Pennsylvania 17403-2909 800/755-6274 Fax: 800/366-5097

1221 - 20.08

Web Site: [www.grahamwindows.com](http://www.grahamwindows.com)

# Single Hung Side Load 3 1/4" Historic Beveled Frame And Sash

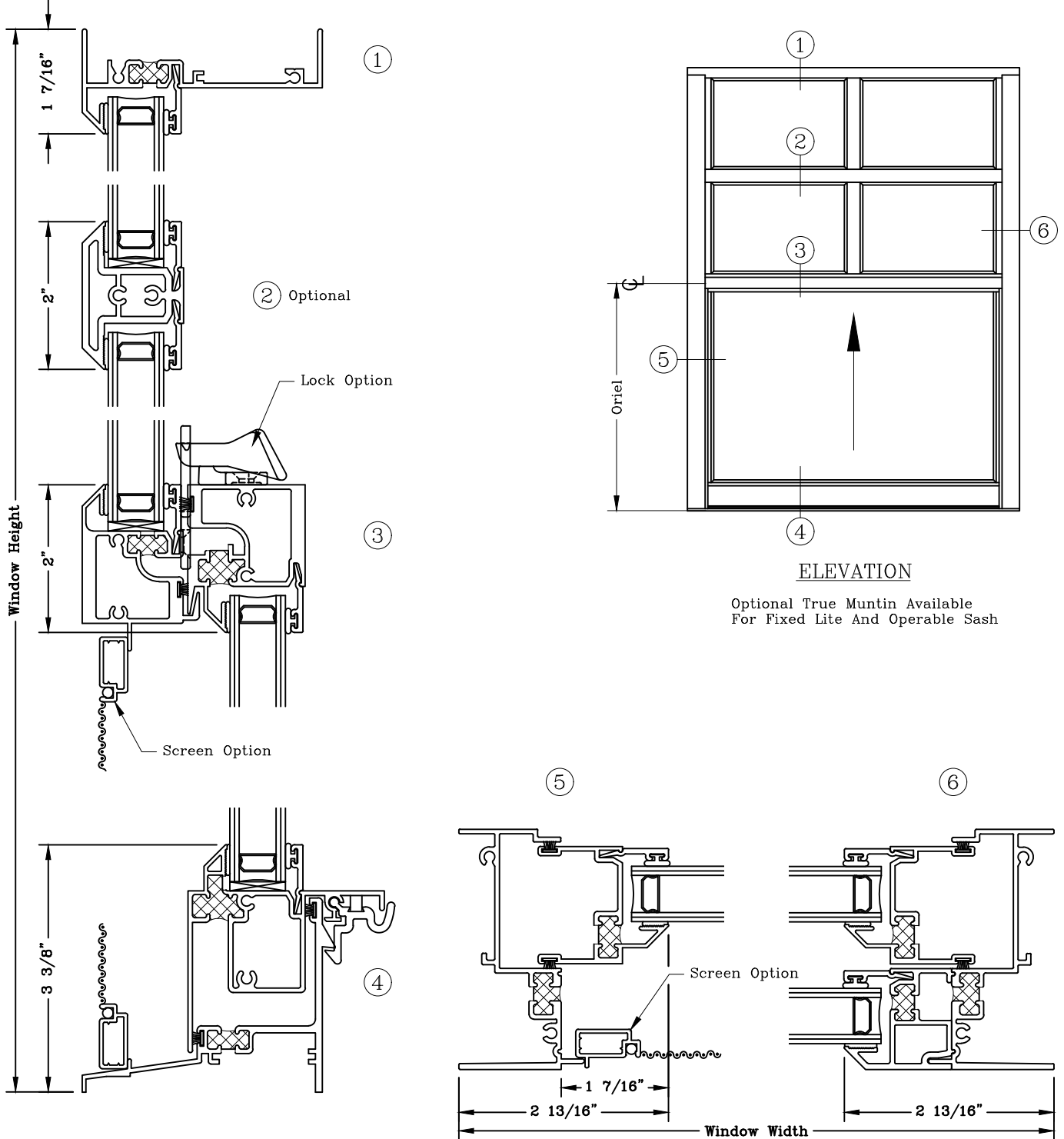


Series: 2000H

Manufacturing Code: 2009

Drawing 1/2 Scale – For Custom Size Drawing Contact Graham

Note: Sealant Not Shown On Details. Refer To General Installation Instructions.



ELEVATION

Optional True Muntin Available For Fixed Lite And Operable Sash

Graham Architectural Products reserves the right to change, add, cancel, remove or otherwise modify the details illustrated without prior notice.

1551 Mt. Rose Avenue, York, Pennsylvania 17403-2909 800/755-6274 Fax: 800/366-5097

0320 - 20.09

Web Site: [www.grahamwindows.com](http://www.grahamwindows.com)

# Single Hung Side Load 3 1/4" Historic Beveled Frame And Sash Frame Options

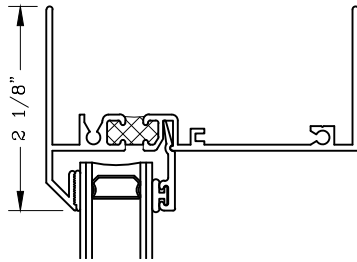


Series: 2000H

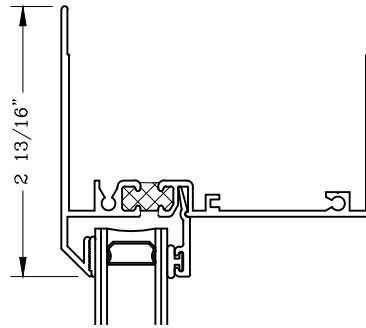
Manufacturing Code: 2010

Drawing 1/2 Scale – For Custom Size Drawing Contact Graham

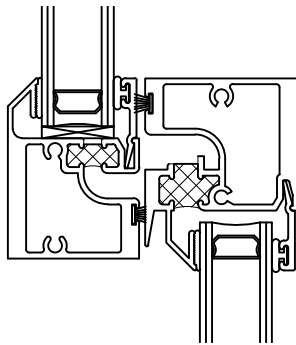
Note: Sealant Not Shown On Details. Refer To General Installation Instructions.



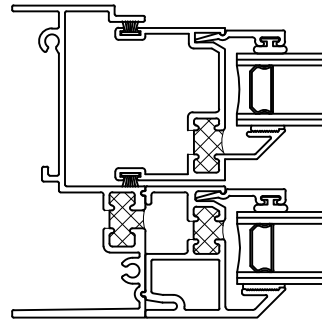
2 1/8" Sightline Head



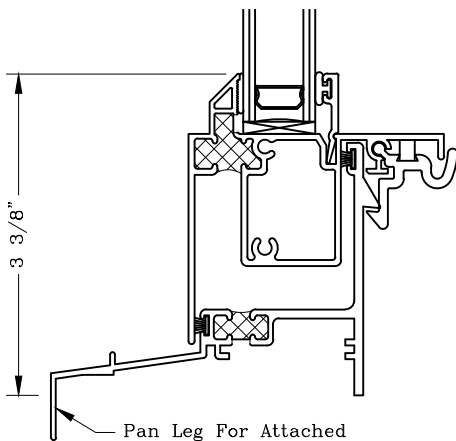
2 13/16" Sightline Head



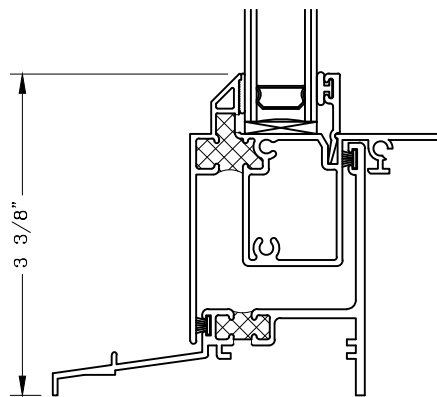
Non Screen Leg Meeting Rail



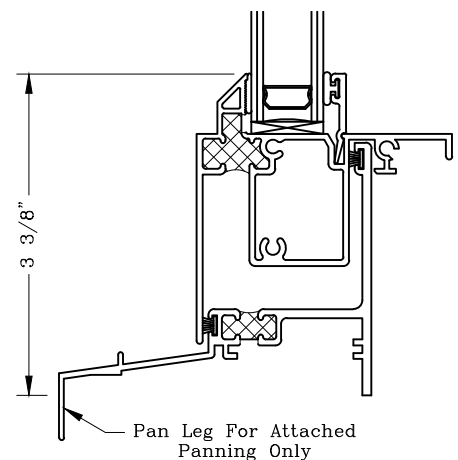
Non Screen Leg Jamb



Pan Leg Sill With Spring Latch Barb



Sill Without Spring Latch Barb



Pan Leg Sill Without Spring Latch Barb

Graham Architectural Products reserves the right to change, add, cancel, remove or otherwise modify the details illustrated without prior notice.

1551 Mt. Rose Avenue, York, Pennsylvania 17403-2909 800/755-6274 Fax: 800/366-5097

0220 - 20.10

Web Site: [www.grahamwindows.com](http://www.grahamwindows.com)

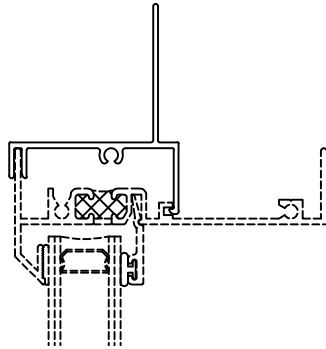
# Single Hung Side Load 3 1/4" Historic Beveled Frame Heads Frame Options



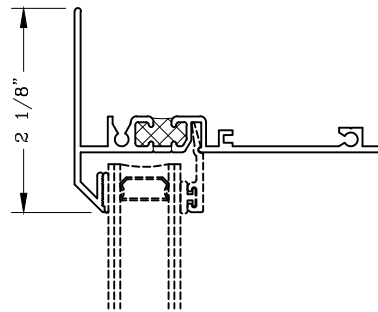
Series: 2000H Manufacturing Code: 2011

Drawing 1/2 Scale – For Custom Size Drawing Contact Graham

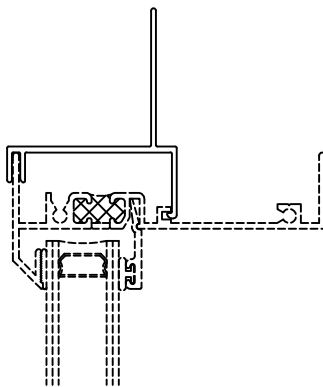
Note: Sealant Not Shown On Details. Refer To General Installation Instructions.



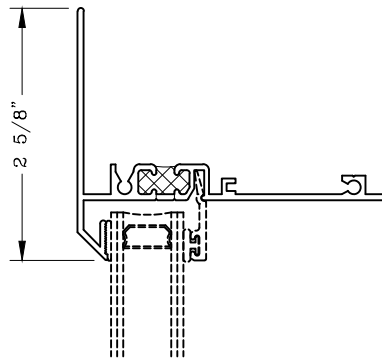
209995  
Applied Nail Fin w/ Screw Port



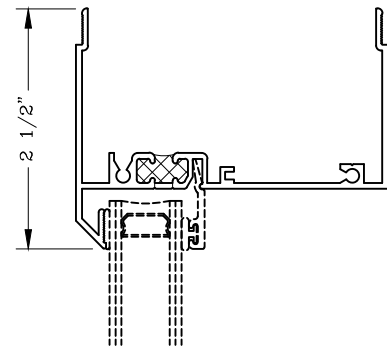
200315  
2 1/8" Sightline Head



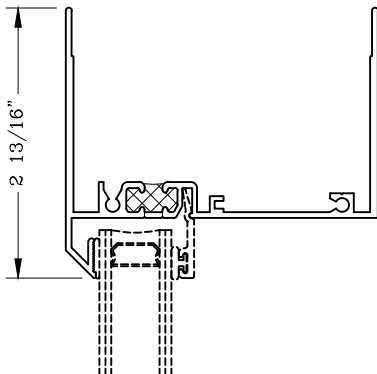
209993  
Applied Nail Fin – Head



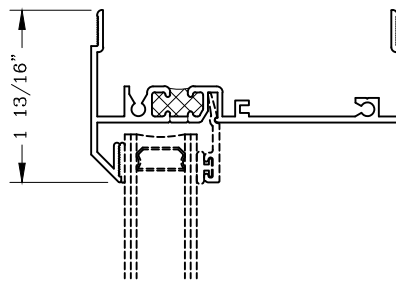
200319  
Fixed Head with 1/2" Flange



200316  
Fixed Head for Stacking



200317  
2 13/16" Sightline Head



200311  
Fixed Head for Stacking

Graham Architectural Products reserves the right to change, add, cancel, remove or otherwise modify the details illustrated without prior notice.

1551 Mt. Rose Avenue, York, Pennsylvania 17403-2909 800/755-6274 Fax: 800/366-5097

Web Site: [www.grahamwindows.com](http://www.grahamwindows.com)



# Single Hung Side Load 3 1/4" Historic Beveled Jambs and Sash Frame Options

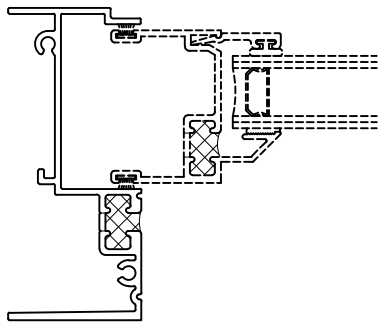


Series: 2000H

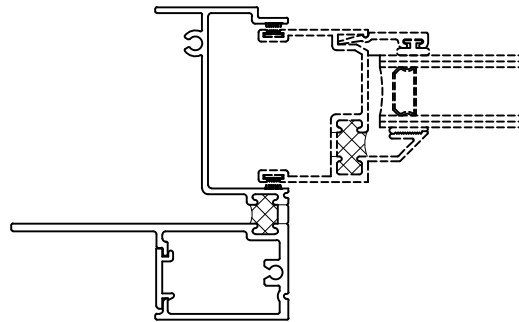
Manufacturing Code: 2012

Drawing 1/2 Scale – For Custom Size Drawing Contact Graham

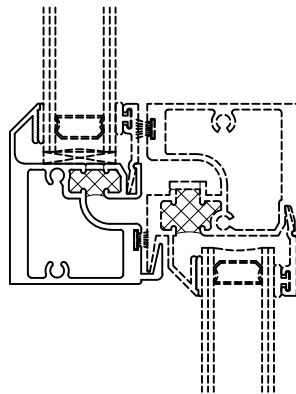
Note: Sealant Not Shown On Details. Refer To General Installation Instructions.



200334  
Non Screen Leg Jamb



203037  
Non Screen Leg Nail Fin Jamb



200351  
Non Screen Leg Meeting Rail

Graham Architectural Products reserves the right to change, add, cancel, remove or otherwise modify the details illustrated without prior notice.

1551 Mt. Rose Avenue, York, Pennsylvania 17403-2909 800/755-6274 Fax: 800/366-5097

1221 - 20.12

Web Site: [www.grahamwindows.com](http://www.grahamwindows.com)

# Single Hung Over Fixed - 3 1/4"

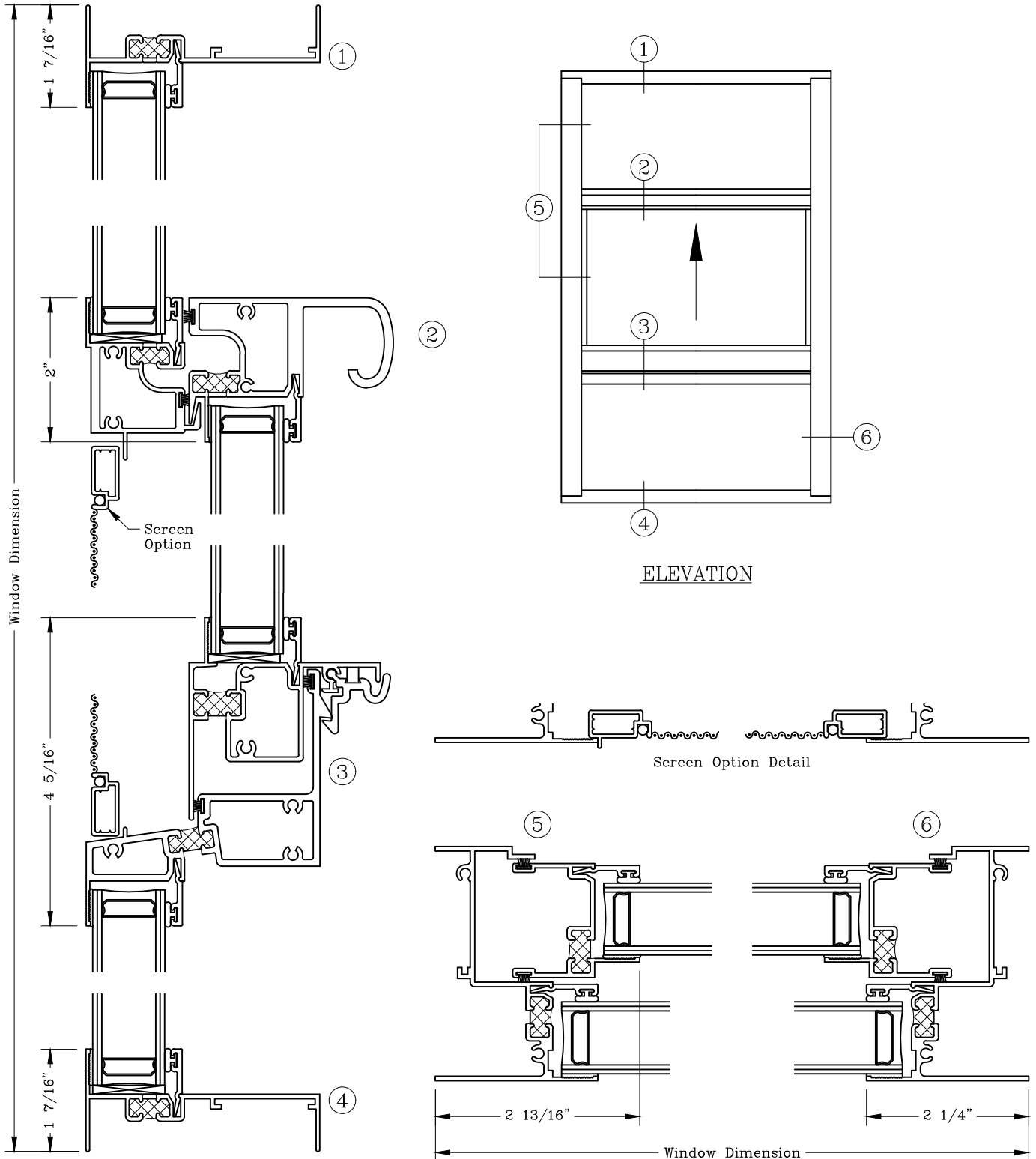


Series: 2000

Manufacturing Code: 2013

Drawing 1/2 Scale - For Custom Size Drawing Contact Graham

Note: Sealant Not Shown On Details. Refer To General Installation Instructions.



Graham Architectural Products reserves the right to change, add, cancel, remove or otherwise modify the details illustrated without prior notice.

1551 Mt. Rose Avenue, York, Pennsylvania 17403-2909 800/755-6274 Fax: 800/366-5097

1221 - 20.13

Web Site: [www.grahamwindows.com](http://www.grahamwindows.com)

# Single Hung Over Fixed - 3 1/4"

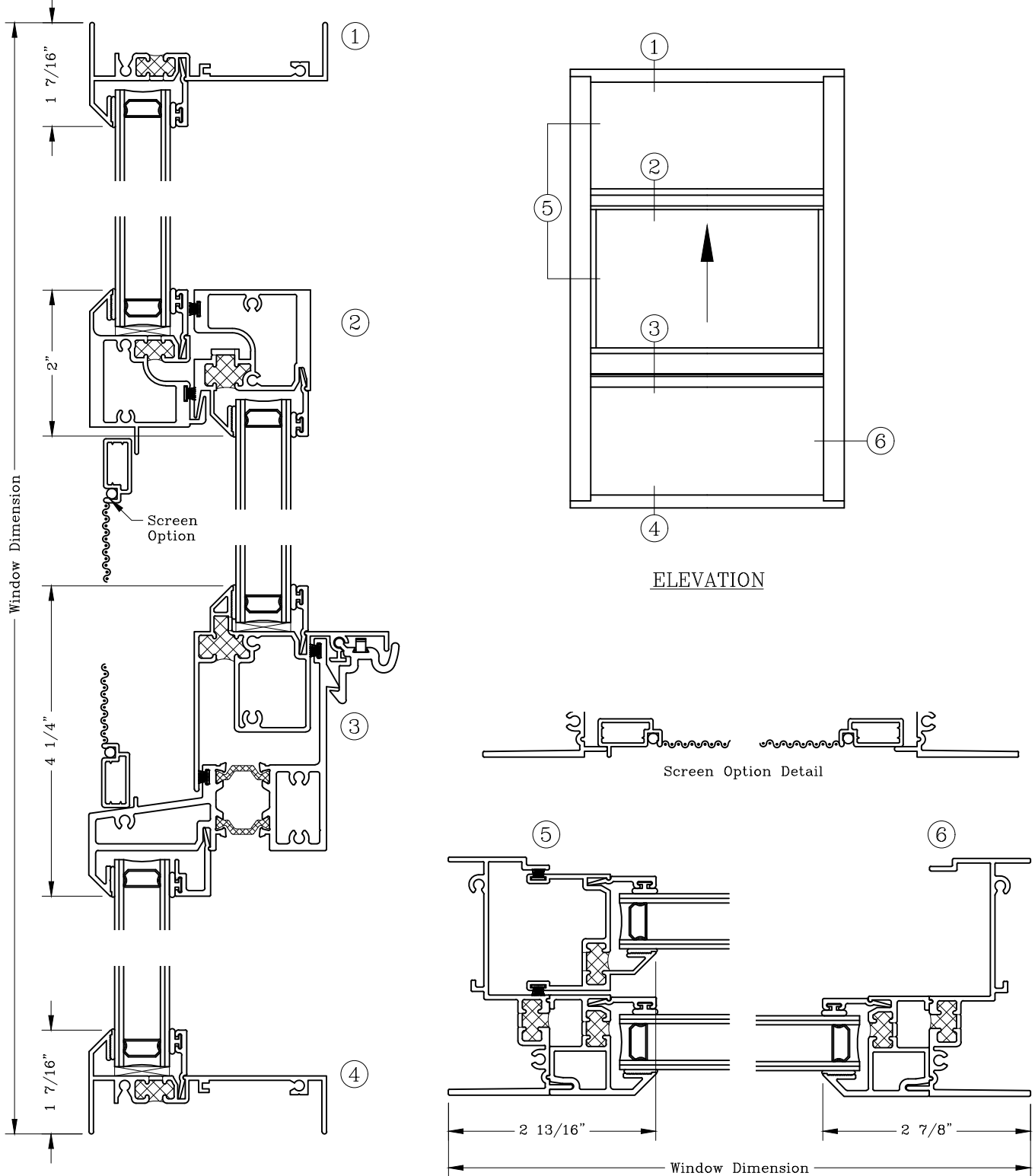


Series: 2000H

Manufacturing Code: 2014

Drawing 1/2 Scale - For Custom Size Drawing Contact Graham

Note: Sealant Not Shown On Details. Refer To General Installation Instructions.



Graham Architectural Products reserves the right to change, add, cancel, remove or otherwise modify the details illustrated without prior notice.

1551 Mt. Rose Avenue, York, Pennsylvania 17403-2909 800/755-6274 Fax: 800/366-5097

1221 - 20.14

Web Site: [www.grahamwindows.com](http://www.grahamwindows.com)

# Frame Options – 3 1/4” Flat Frame Sills

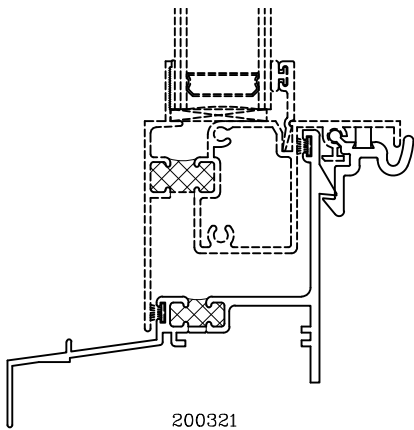


Series: 2000

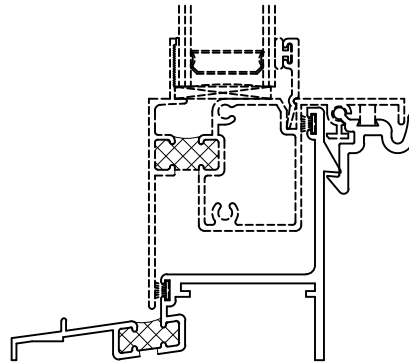
Manufacturing Code: 2015

Drawing 1/2 Scale – For Custom Size Drawing Contact Graham

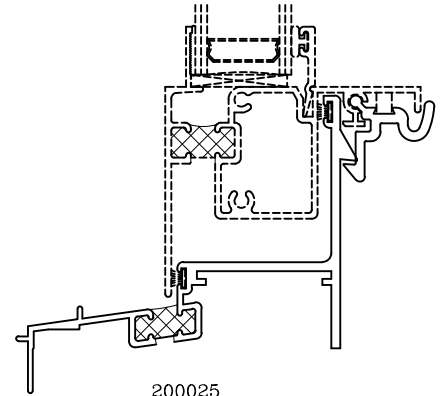
Note: Sealant Not Shown On Details. Refer To General Installation Instructions.



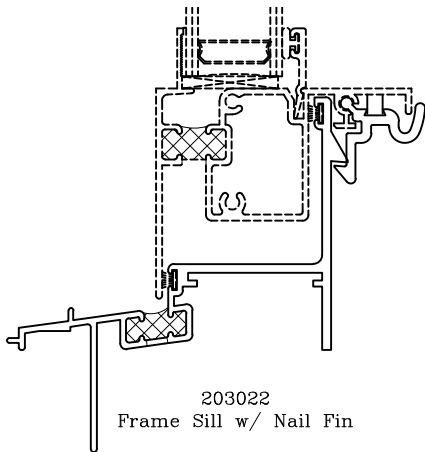
200321  
Frame Sill w/ Pan Leg



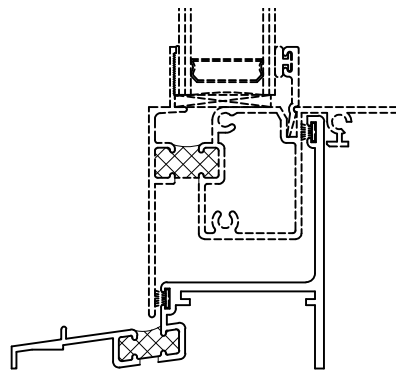
200026  
Flat Equal Leg Sill



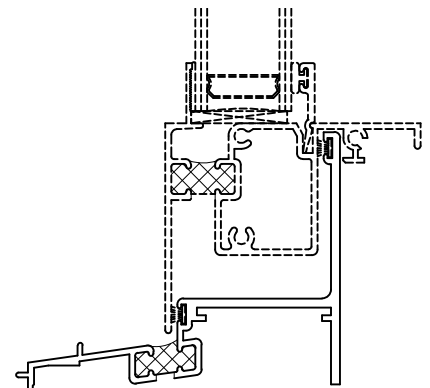
200025  
Flat Pan Leg Sill



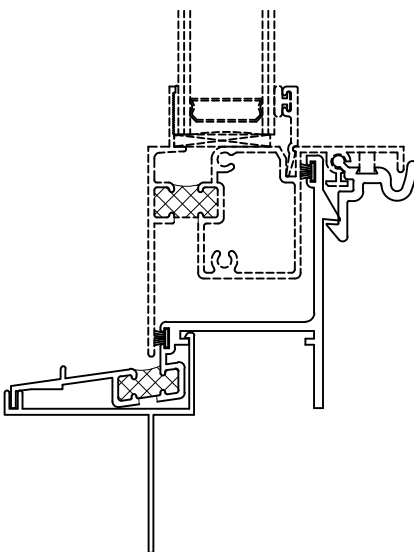
203022  
Frame Sill w/ Nail Fin



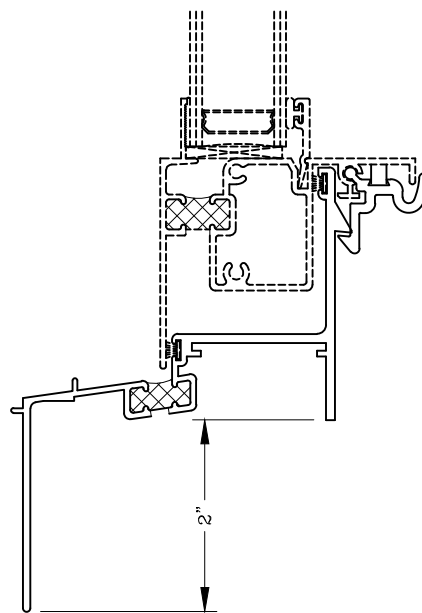
200121  
Flat Equal Leg Sill w/o Barb



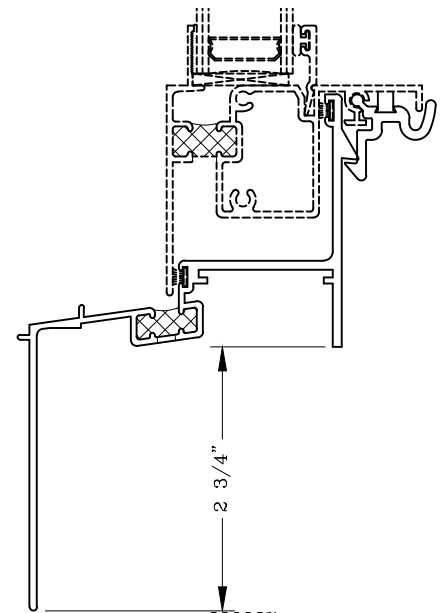
200120  
Flat Pan Leg Sill w/o Barb



209997  
Applied Nail Fin - Sill



200028  
Flat 2” Flange Frame Sill



200027  
Frame Sill w/ 2 3/4” Flange

Graham Architectural Products reserves the right to change, add, cancel, remove or otherwise modify the details illustrated without prior notice.

1551 Mt. Rose Avenue, York, Pennsylvania 17403-2909 800/755-6274 Fax: 800/366-5097

1221 – 20.15

Web Site: [www.grahamwindows.com](http://www.grahamwindows.com)

# Frame Options – 3 1/4” Flat Frame Heads

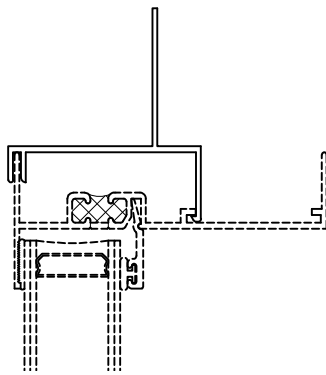


Series: 2000

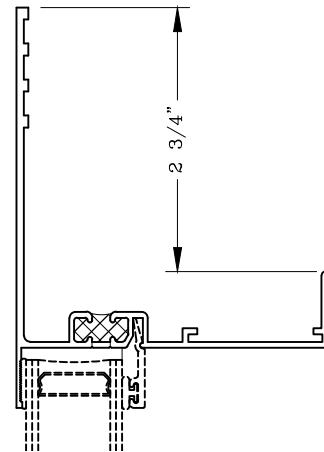
Manufacturing Code: 2016

Drawing 1/2 Scale – For Custom Size Drawing Contact Graham

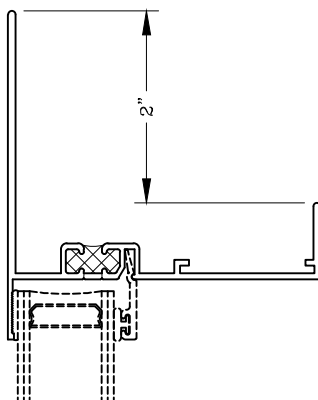
Note: Sealant Not Shown On Details. Refer To General Installation Instructions.



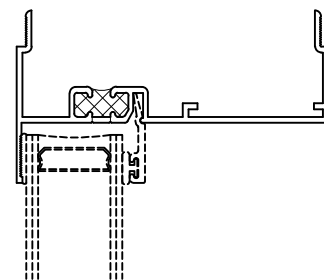
209996  
Applied Nail Fin – Head



200012  
Frame Head w/ 2 3/4” Flange



200013  
Frame Head w 2” Flange



200011  
Frame Head Self-Mull

Graham Architectural Products reserves the right to change, add, cancel, remove or otherwise modify the details illustrated without prior notice.

1551 Mt. Rose Avenue, York, Pennsylvania 17403-2909 800/755-6274 Fax: 800/366-5097

1221 – 20.16

Web Site: [www.grahamwindows.com](http://www.grahamwindows.com)

# Frame Options – 3 1/4” Flat Frame Jambs

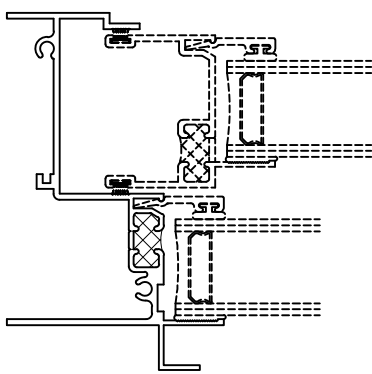


Series: 2000

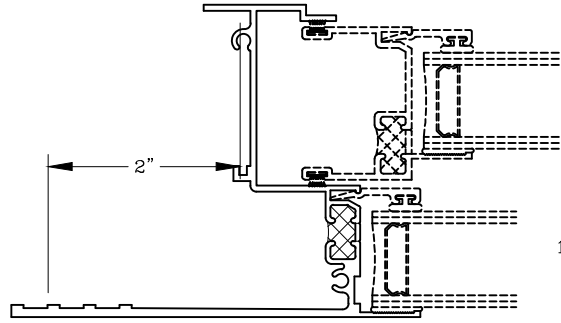
Manufacturing Code: 2017

Drawing 1/2 Scale – For Custom Size Drawing Contact Graham

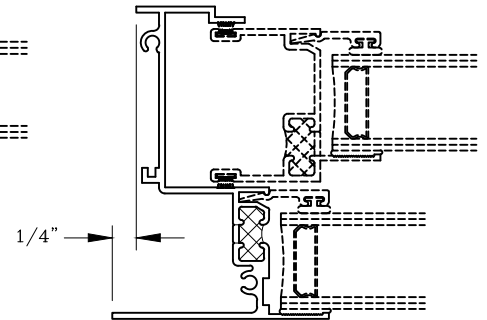
Note: Sealant Not Shown On Details. Refer To General Installation Instructions.



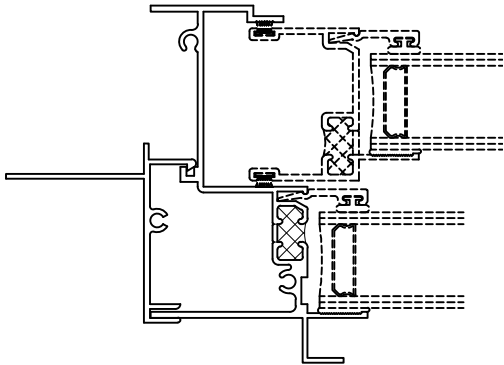
203030  
Frame Jamb Equal Leg w/ Screen Track



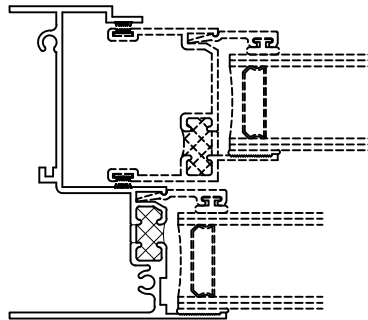
200035  
Frame Jamb w/ 2” Flange



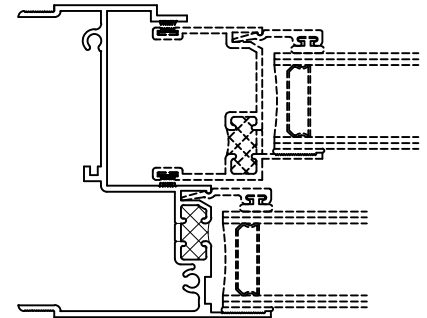
200039  
Frame Jamb w/ Offset Leg



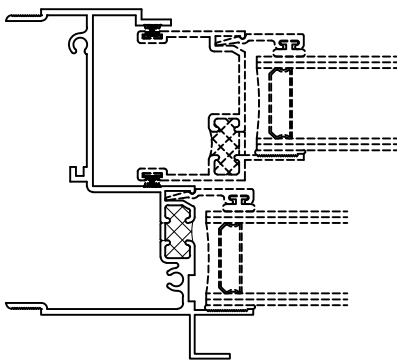
209998  
Applied Nail Fin - Jamb



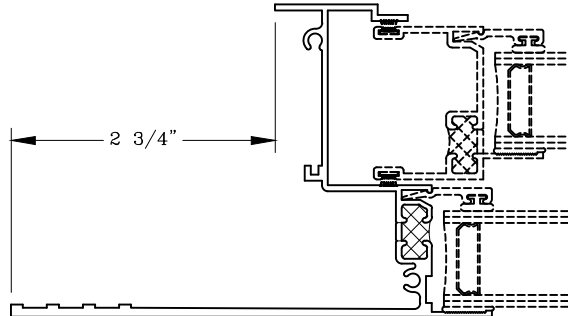
200030  
Frame Jamb w/ Equal Leg



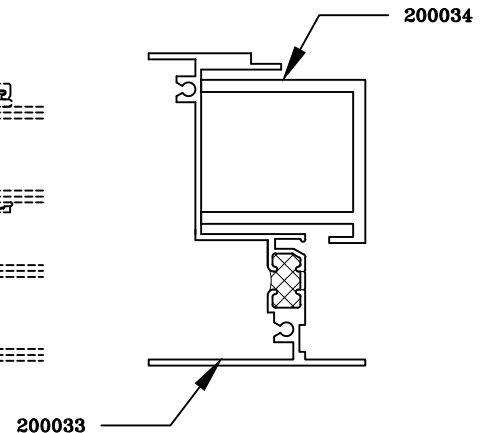
200031  
Frame Jamb Self Mull



203031  
Flat Self-Mull Jamb



200032  
Flat 2 3/4” Flange Frame Jamb



200033  
Channel and Jamb Frame For Curving

Graham Architectural Products reserves the right to change, add, cancel, remove or otherwise modify the details illustrated without prior notice.

1551 Mt. Rose Avenue, York, Pennsylvania 17403-2909 800/755-6274 Fax: 800/366-5097

1221 – 20.17

Web Site: [www.grahamwindows.com](http://www.grahamwindows.com)