

3000 SERIES DATA SHEET

OPERATION



TYPE	AAMA RATING & TEST SIZE	AIR (cfm/ft ²) at 50 mph	WATER (psf)	DESIGN PRESSURE (psf)	STRUCTURAL OVER-LOAD (psf)	U-VALUE (BTU/hr/ft ² /°F) ¹	CRF	CRF	OITC
DH/SH-TILT	AP-PG50 60 x 99	0.22	10.65	50.13	150.13	0.44 – 0.58	49	30 - 36	29 - 30

¹U-values will vary depending upon glazing selected

3000 SERIES QUICK VIEW:

An architectural grade double hung with tilt-in sash. Applied grids and flange frame options available.

STANDARD FEATURES

- Block & tackle balances for superior operation
- Mulls to 3 1/4" frame fixed and operable products
- Tilt sash for ease of cleaning
- Steel pivot bar in Delrin® shoe
- Maintenance-operated tilt-release mechanism
- Extruded automatic head and sill latches
- Full-length extruded lift handles

OPTIONAL FEATURES

- Applied-profile muntin grids
- Flanged frame
- White bronze sweep lock at meeting rail
- Self-mull jambs for both double-hung fixed units
- Multiple units can utilize common jamb and continuous head & sill with operable and fixed units
- High-performance class 5 balances
- Blast-resistant (B3000) version available



Window series: 3000 Double Hung — General Specifications & Details

- Nominal Frame/Sill Wall Thickness: 0.062/0.093"
- Applications: Industrial, Educational, Hospitals, and Hi-Rise
- Max. Test size: 5'0" x 8'3"
- Glazing Thickness:
 - Insulating: to 1" bead glaze
- Maximum Sash Weight: 80lbs. (depends on width-to-height ratio. If over 65 lbs., please contact factory)
- Muntins: Grids between lites of IG unit or exterior applied in conjunction with 3/16" IG unit
- Flange frame

- Finish Options:
 - AAMA 2603 — Standard acrylic or polyester
 - AAMA 2604 — 2 coat 50% fluoropolymer
 - AAMA 2605 — 2 coat fluoropolymer 70% kynar
 - Powder Coat
 - Anodized
- Hardware:
 - White bronze sweep lock at meeting rail
- Accessories:
 - Frame Family: 3 1/4"
 - Fixed Lite Mulling Option System: 1200
 - Mullions:
 - Stacking: Integral & fixed-stack mull
 - Side: 3-piece-mull
 - Panning: Available
 - Trims: Available
 - Receptor Systems: Available
 - Screen: Security/vandal screen available
- Exceptions: Call Graham sales rep or see website for more information

Our products are tested to the standards of and certified by the American Architectural Manufacturer's Association and the National Fenestration Rating Council.



Double Hung Tilt - 3 1/4"

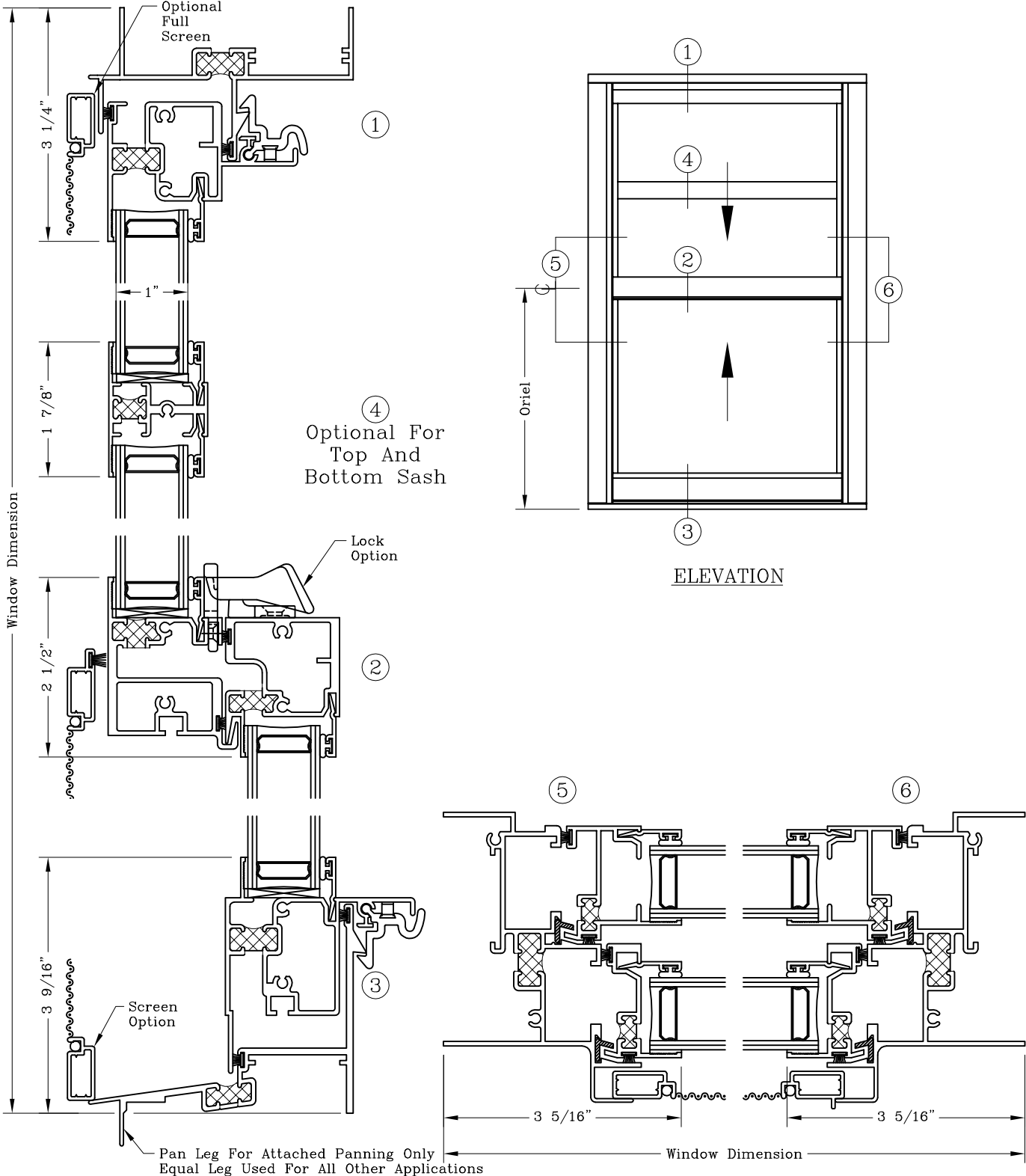


Series: 3000

Manufacturing Code: 3001

Drawing 1/2 Scale - For Custom Size Drawing Contact Graham

Note: Sealant Not Shown On Details. Consult Technical Services At Factory For Sealing Procedures.



Fixed - 3 1/4" Sightline

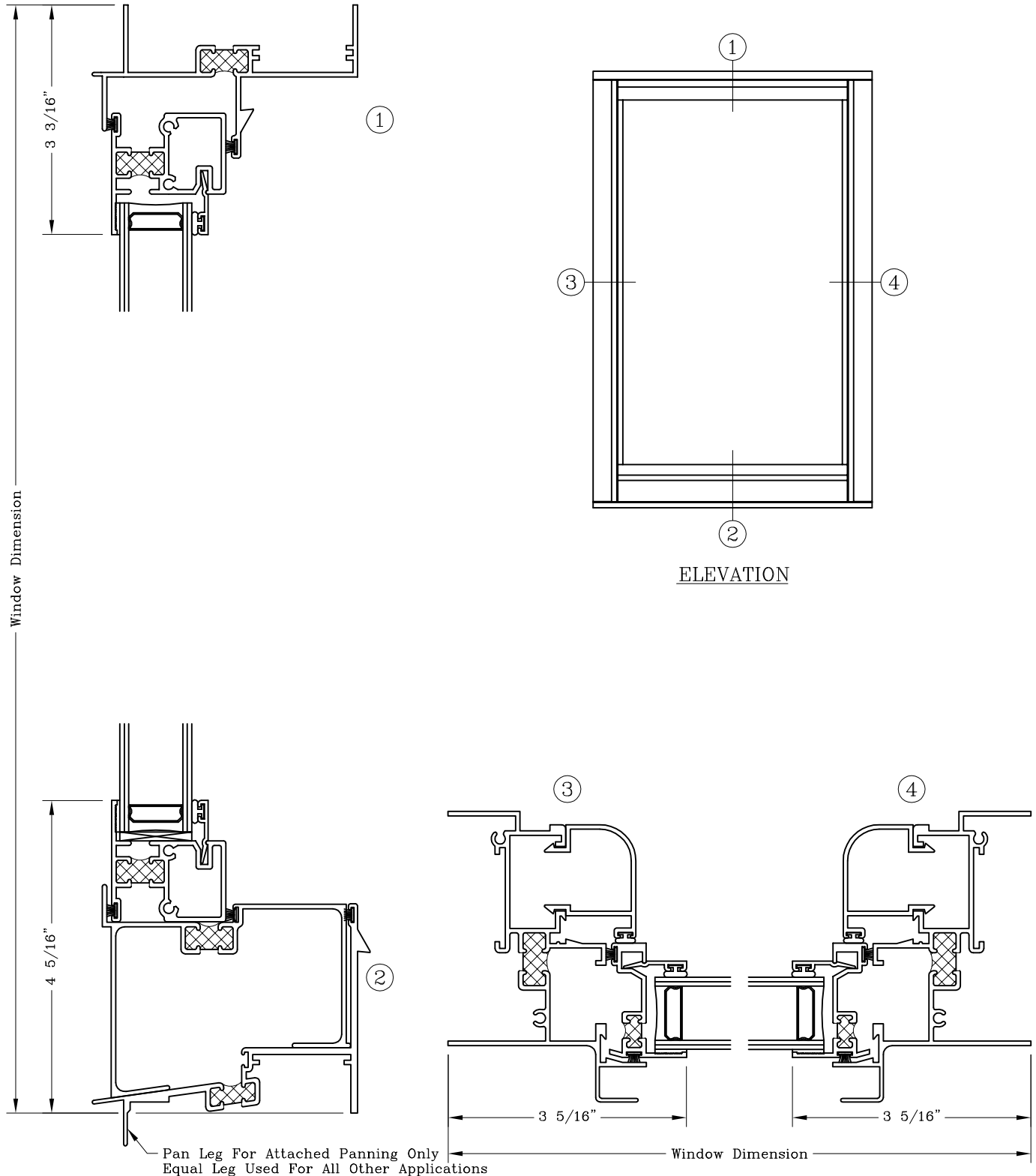


Series: 3000

Manufacturing Code: 3002

Drawing 1/2 Scale - For Custom Size Drawing Contact Graham

Note: Sealant Not Shown On Details. Consult Technical Services At Factory For Sealing Procedures.



Double Hung Tilt - 3 1/4" (Astr.)

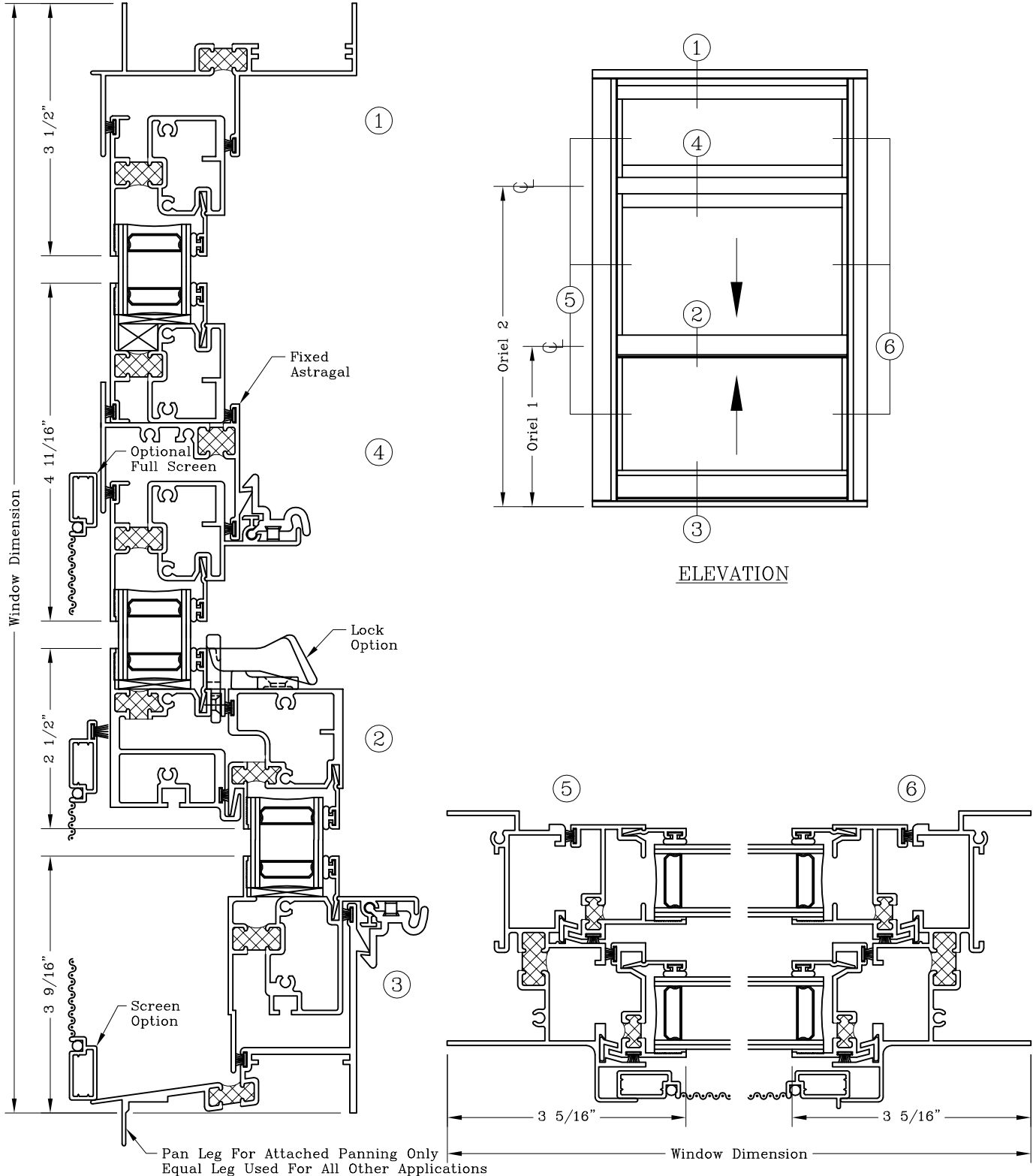


Series: 3000

Manufacturing Code: 3003

Drawing 1/2 Scale - For Custom Size Drawing Contact Graham

Note: Sealant Not Shown On Details. Consult Technical Services At Factory For Sealing Procedures.



Frame Options - 3 1/4"

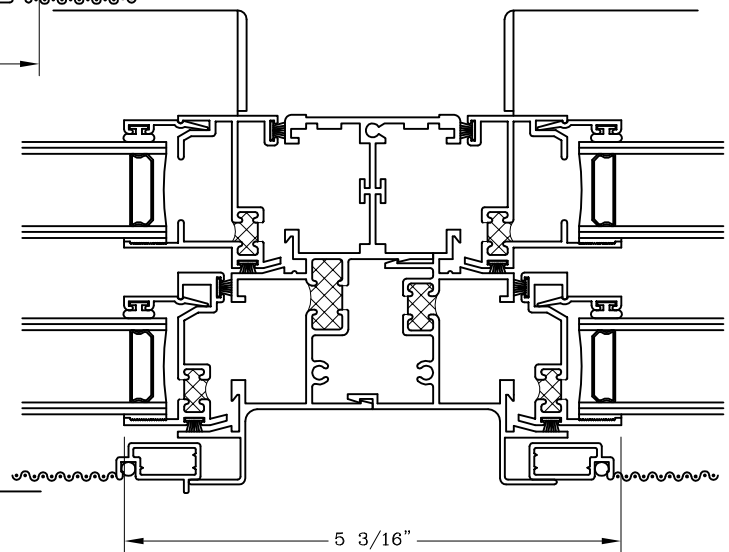
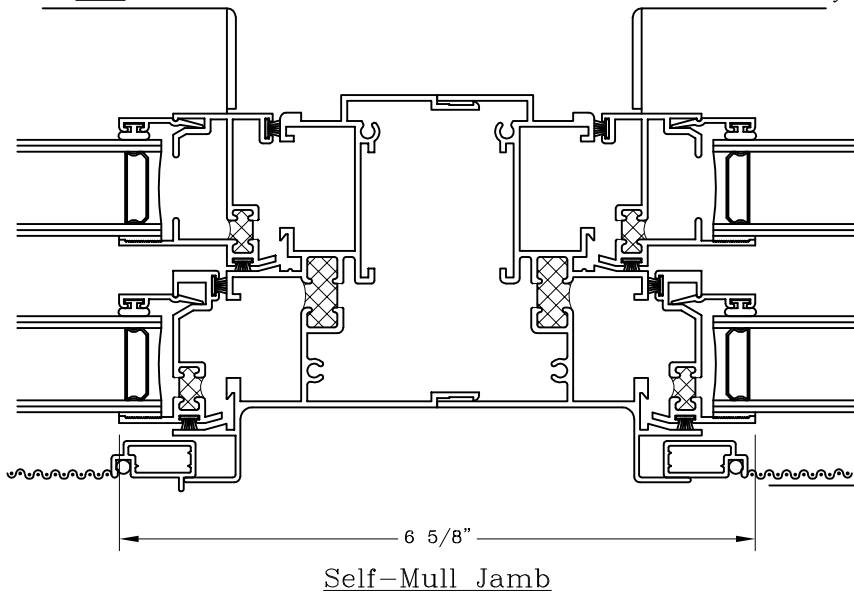


Series: 3000

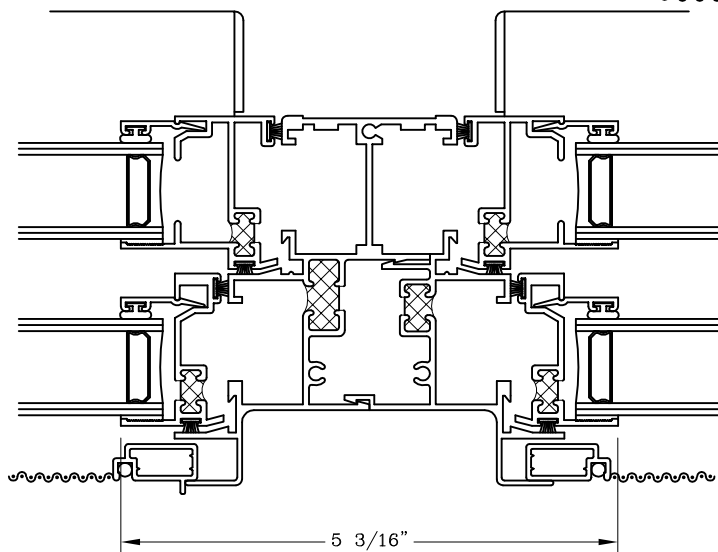
Manufacturing Code: 3004

Drawing 1/2 Scale - For Custom Size Drawing Contact Graham

Note: Sealant Not Shown On Details. Consult Technical Services At Factory For Sealing Procedures.



Double Hung Jamb Impost
For B/T Balances



Double Hung Jamb Impost
For Class "5" Balances

Frame Options - 3 1/4"

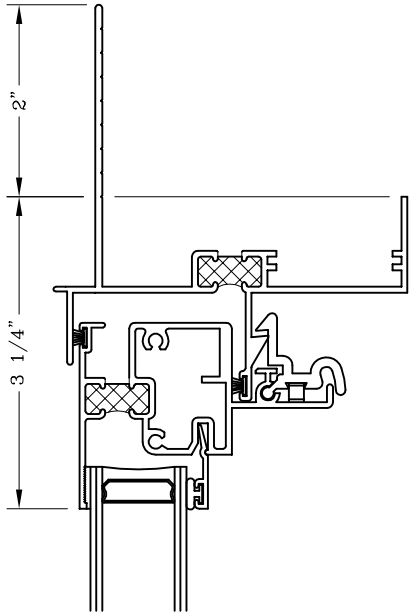


Series: 3000

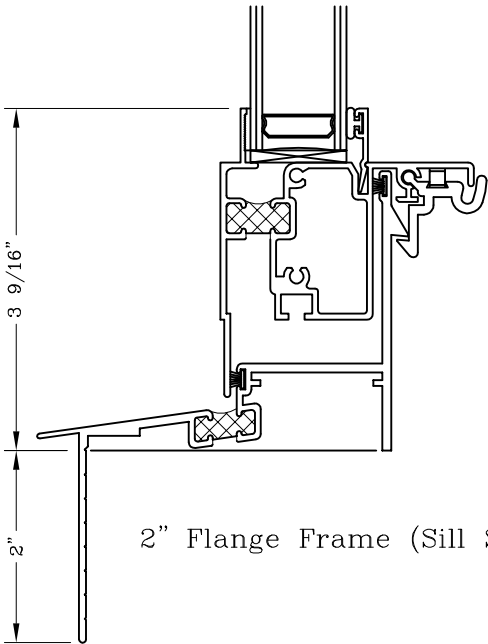
Manufacturing Code: 3005

Drawing 1/2 Scale - For Custom Size Drawing Contact Graham

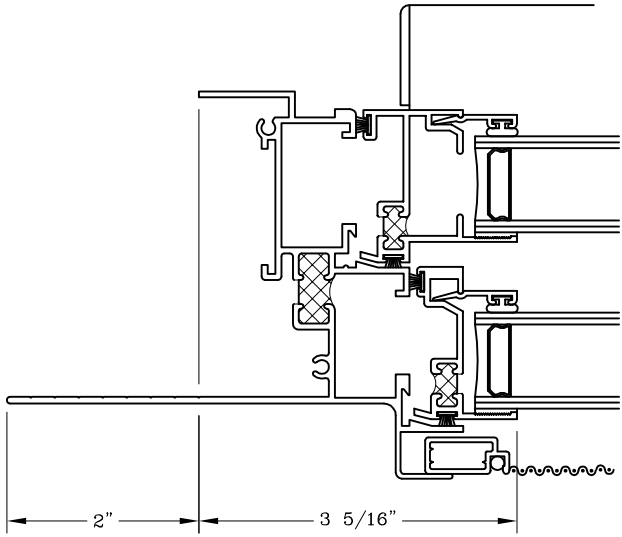
Note: Sealant Not Shown On Details. Consult Technical Services At Factory For Sealing Procedures.



2" Flange Frame (Head Shown)



2" Flange Frame (Sill Shown)



2" Flange Frame (Jamb Shown)