

Muntin Grids – Standard

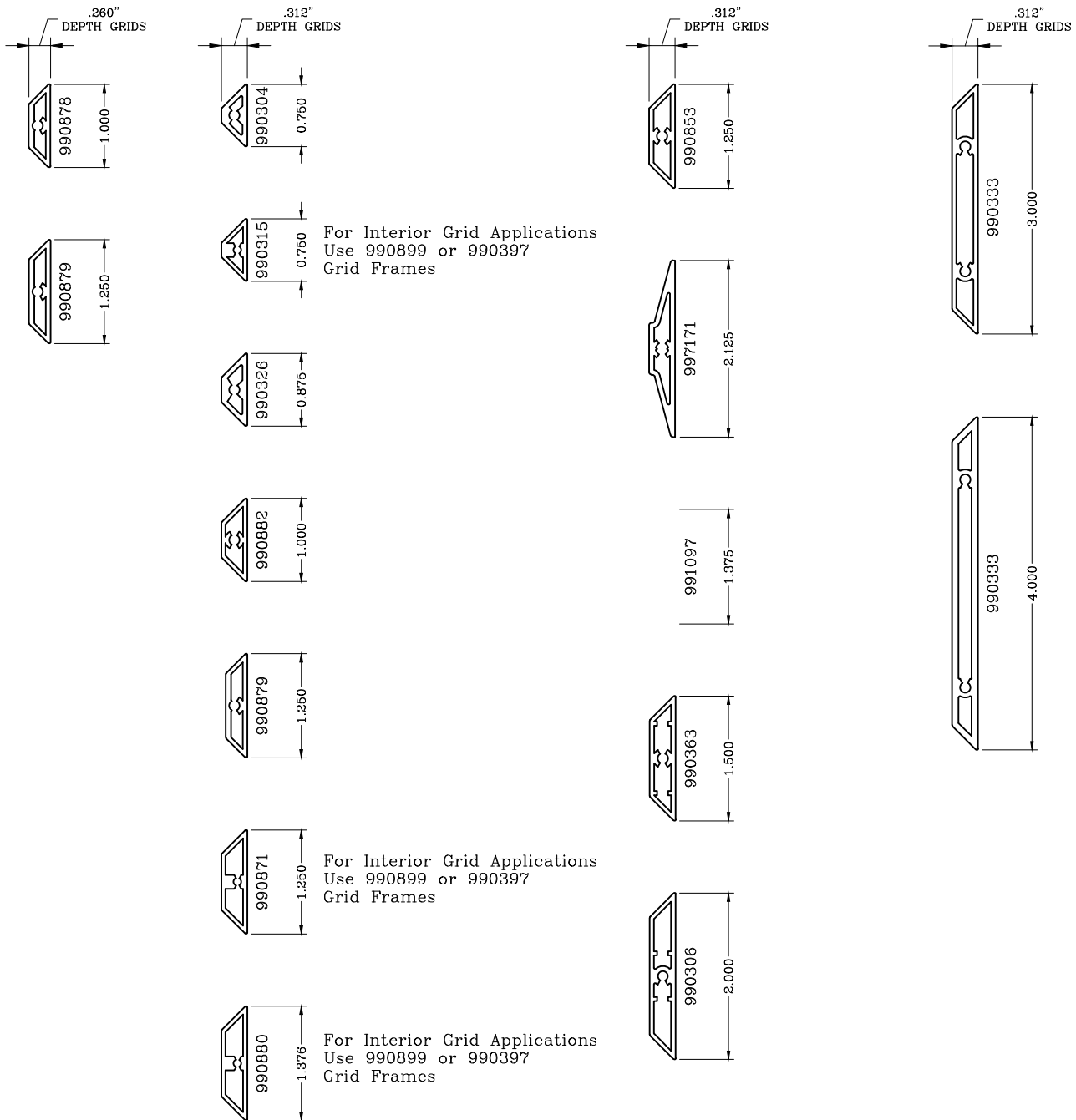


Series: Accessories Manufacturing Code: GR01

Drawing 1/2 Scale – For Custom Size Drawing Contact Graham

Note: Sealant Not Shown On Details. Refer to General Details at Factory for Sealing Procedures.

Standard Grids



Graham Architectural Products reserves the right to change, add, cancel, remove or otherwise modify the details illustrated without prior notice.

1551 Mt. Rose Avenue, York, Pennsylvania 17403-2909 800/755-6274 Fax: 800/366-5097

0618 – GR.01

Web Site: www.grahamwindows.com

Muntin Grids – Standard Tubular and Profiled

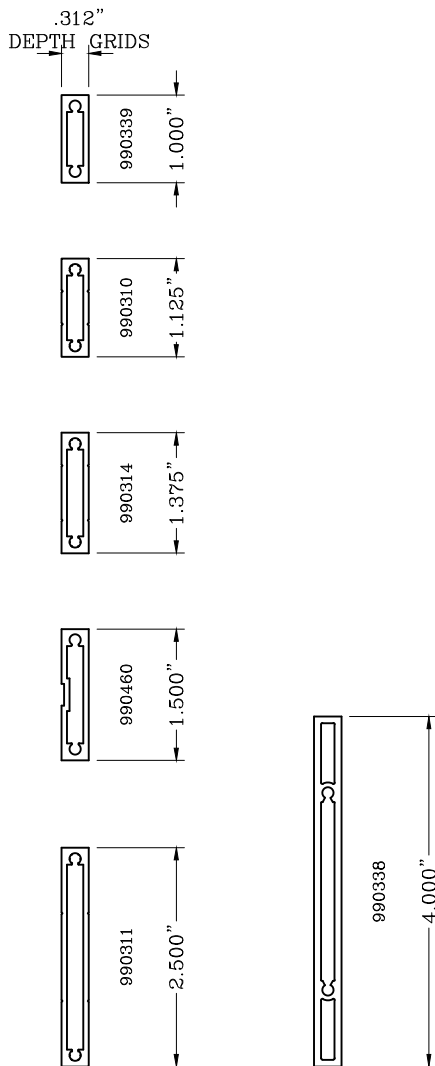


Series: Accessories Manufacturing Code: GR02

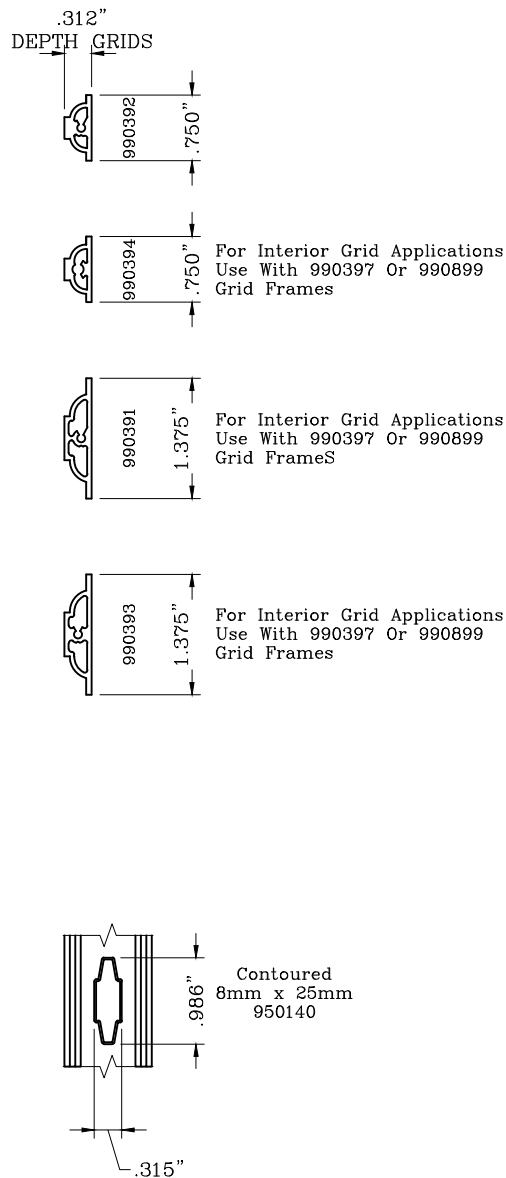
Drawing 1/2 Scale – For Custom Size Drawing Contact Graham

Note: Sealant Not Shown On Details. Refer To General Installation Instructions.

Tubular Grids



Profile Grids



Graham Architectural Products reserves the right to change, add, cancel, remove or otherwise modify the details illustrated without prior notice.

1551 Mt. Rose Avenue, York, Pennsylvania 17403-2909 800/755-6274 Fax: 800/366-5097
Web Site: www.grahamwindows.com

0421 – GR.02

Muntin Grids – Standard Beveled and Concave



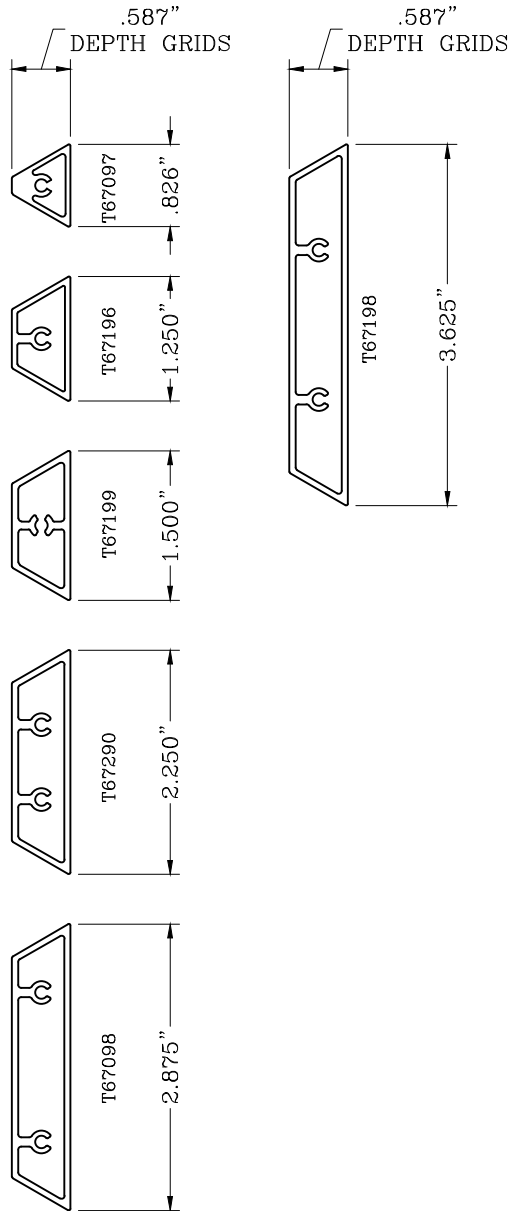
Series: Accessories Manufacturing Code: GR03

Drawing 1/2 Scale – For Custom Size Drawing Contact Graham

Note: Sealant Not Shown On Details. Refer to General Installation Instructions for Sealing Procedures.

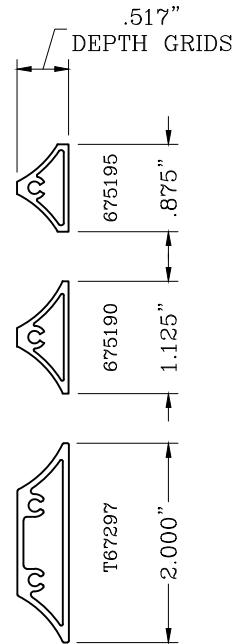
Standard Beveled Grids

GT6... Series



Standard Concave Grids

SR 6700 & GT6... Series



Muntin Grids – Historic Applications Triple Grid



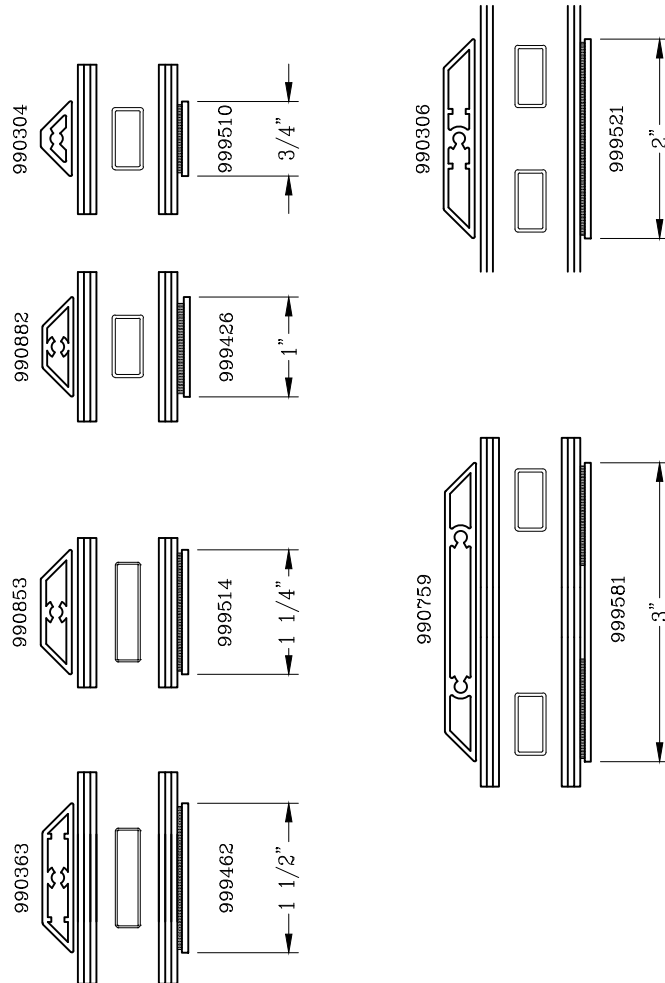
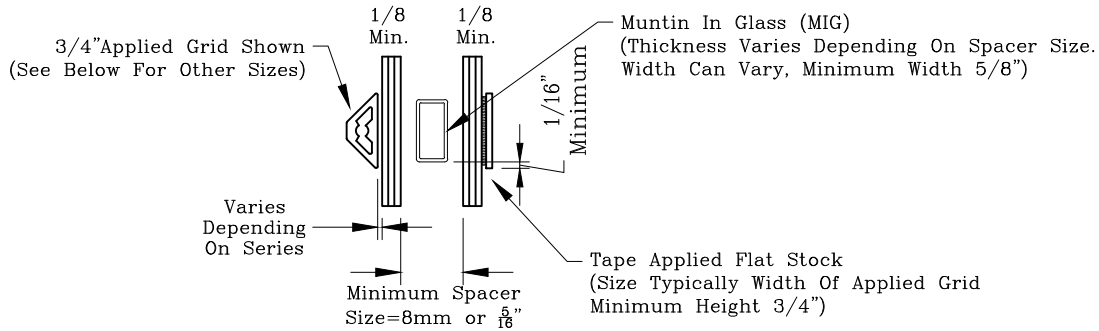
Series: Accessories Manufacturing Code: GR04

Drawing 1/2 Scale – For Custom Size Drawing Contact Graham

Note: Sealant Not Shown On Details. Refer To General Installation Instructions.

NOTE:

Internal MIG depth may vary and will typically be sized under the external grid and interior flat stock.



Graham Architectural Products reserves the right to change, add, cancel, remove or otherwise modify the details illustrated without prior notice.

1551 Mt. Rose Avenue, York, Pennsylvania 17403-2909 800/755-6274 Fax: 800/366-5097

0221 – GR.04

Web Site: www.grahamwindows.com

Muntin Grids – Standard Beveled, Concave and Profile

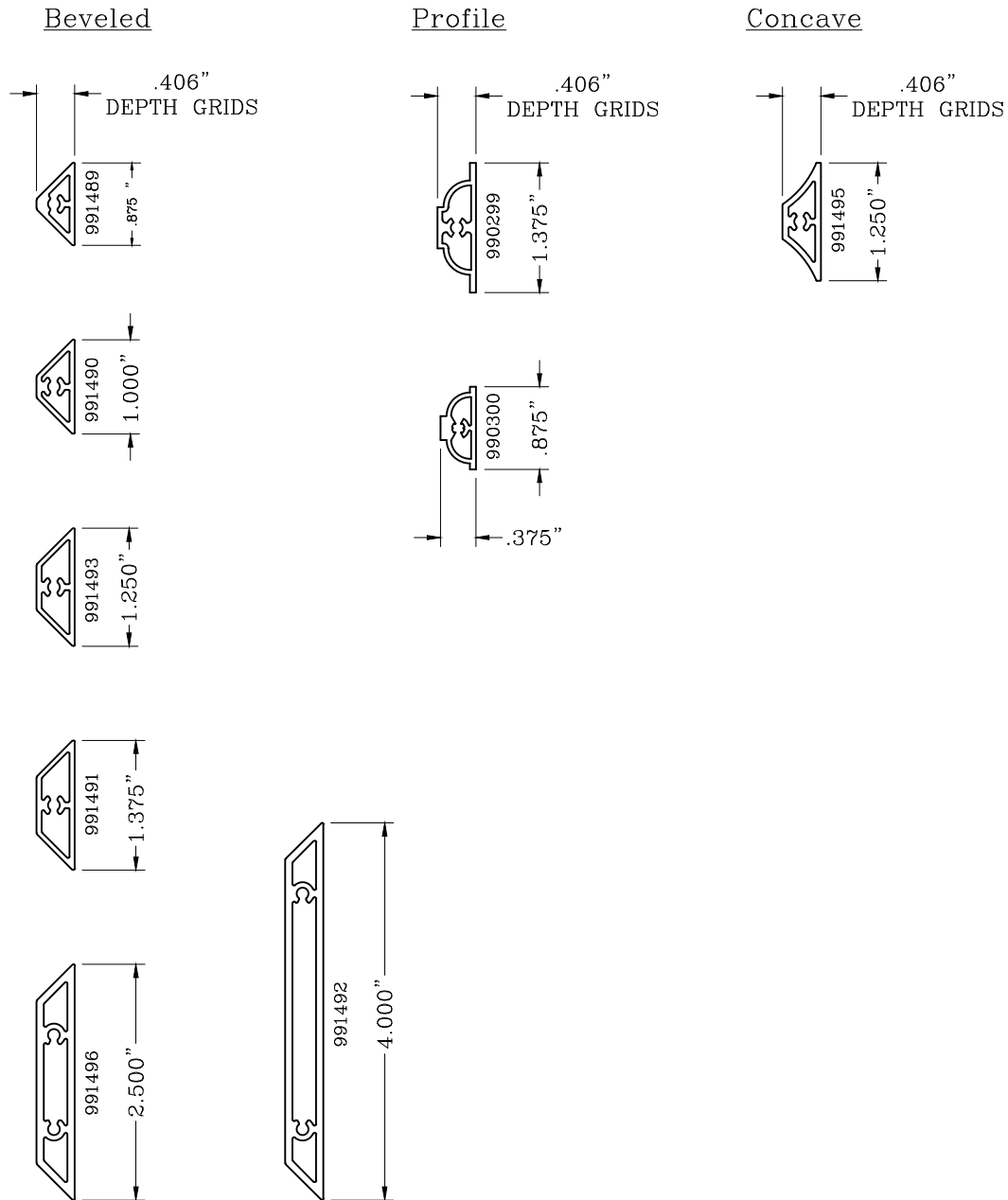


Series: Accessories Manufacturing Code: GR05

Drawing 1/2 Scale – For Custom Size Drawing Contact Graham

Note: Sealant Not Shown On Details. Refer to General Installation Instructions for Sealing Procedures.

Standard Grids GT2200 Single Hung & 1400 Fixed Offset



Graham Architectural Products reserves the right to change, add, cancel, remove or otherwise modify the details illustrated without prior notice.

1551 Mt. Rose Avenue, York, Pennsylvania 17403-2909 800/755-6274 Fax: 800/366-5097

0221 – GR.05

Web Site: www.grahamwindows.com

Muntin Grids – Historic Applications

Triple Grid



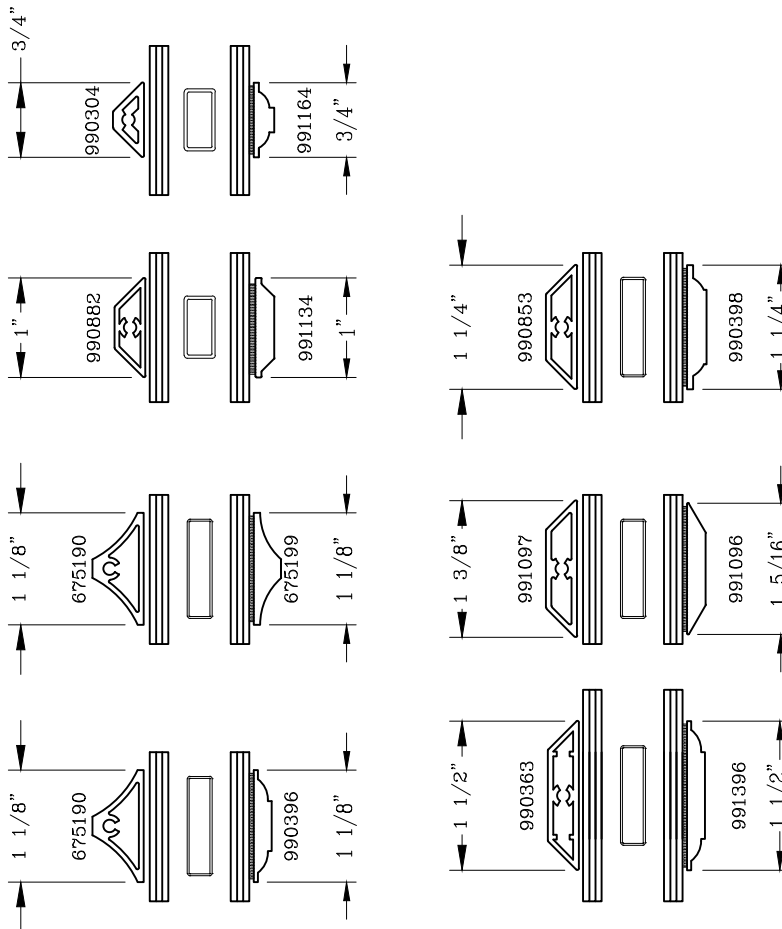
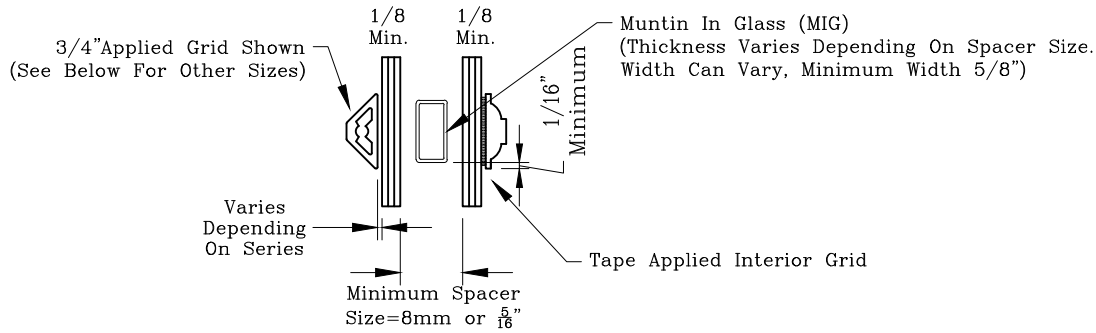
Series: Accessories Manufacturing Code: GR06

Drawing 1/2 Scale – For Custom Size Drawing Contact Graham

Note: Sealant Not Shown On Details. Refer To General Installation Instructions.

NOTE:

Internal MIG depth may vary and will typically be sized under the external and interior grids.



Graham Architectural Products reserves the right to change, add, cancel, remove or otherwise modify the details illustrated without prior notice.

1551 Mt. Rose Avenue, York, Pennsylvania 17403-2909 800/755-6274 Fax: 800/366-5097

0221 – GR.06

Web Site: www.grahamwindows.com

Grid Frames

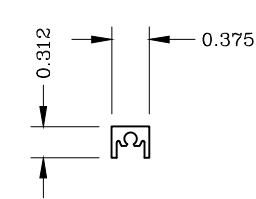
Standard Muntin Grid Frames

Series: Accessories Manufacturing Code: GF01

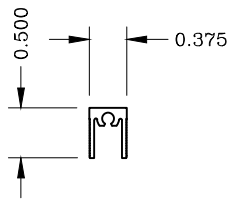
Drawing 1/2 Scale – For Custom Size Drawing Contact Graham

Note: Sealant Not Shown On Details. Consult Technical Services At Factory For Sealing Procedures.

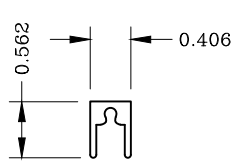
Note: Grid Frame Not Available On All Products



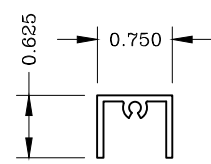
Eq. Leg Frame
340419



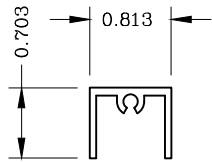
Frame Filler
990290
(For Series 3400)



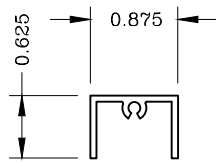
Frame Filler
990427



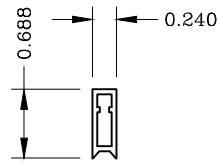
Frame Filler
999412



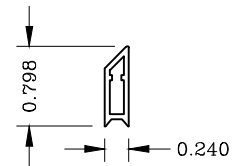
Frame Filler
990343



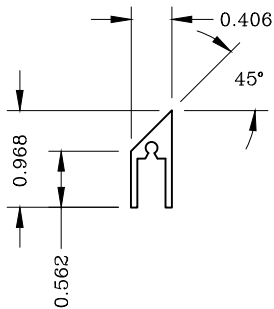
Frame Filler
999402



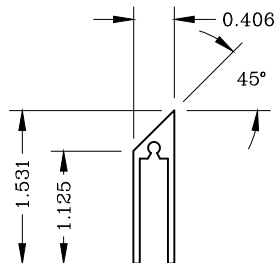
Frame Filler
990899
(Use Only With
990315
Or 990871 Grid)



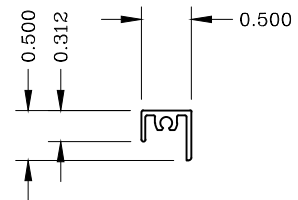
Frame Filler
990397
(Use Only With
990315
Or 990871 Grid)



45° Beveled Filler
990763



45° Beveled Filler
990854



Frame Filler
990487
(For Series 3400)