

B7600 SERIES DATA SHEET

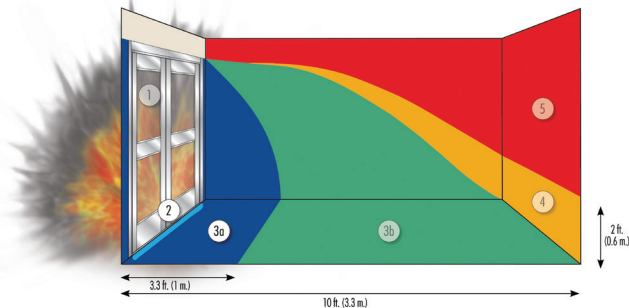
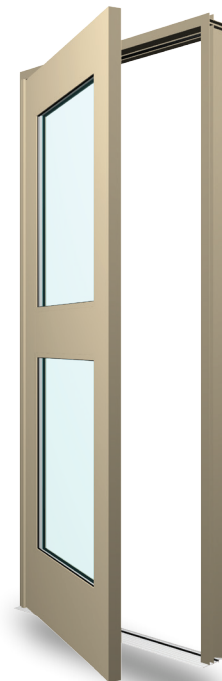
MEETS UFC 4-010-01 2007 CRITERIA • THIRD PARTY CALCULATIONS • MANUFACTURED IN THE USA

WINDOW TYPE	FRAME DEPTH (inches)	SERIES	DESIGNED BLAST PRESSURE (psi)	POSITIVE PHASE IMPULSE (psi-msec)	WINDOW SIZE (inches)	GLAZING COMPOSITION (inches)	TESTING & CERTIFICATIONS			
							Test Methods	Qualified	Certification	
Aluminum Entry Doors	Single	6%	B7600	6.4	48	44½ x 88¼	3/16 tempered, 9/16 as, ¼ lami	ASTM F 1642	ASTM "Minimal Hazard" GSA Condition 2 UFC 4-010-01	Independent Test Report
	Double	6%	B7600	6.9	45	82¼ x 89	3/16 tempered, 9/16 as, ¼ lami	ASTM F 1642	ASTM "Very Low" Hazard GSA Condition 3a UFC 4-010-01	Independent Test Report

Products comply with Unified Facilities Criteria UFC 4-010-01; DoD Minimum Antiterrorism Standards for Buildings

STANDARD FEATURES

- Aluminum Entry System for blast mitigation
- Meets Dod UFC4-010-01 criteria
- Provides GSA level C protection against explosive attacks
- Single and double door panels available (double doors require impost)
- Door thickness of 1 ¾", accepting 1" insulating glazing units with laminated interior glass
- Stile width of 5¾", with 7¼" top rail and 10¾" bottom rail standard (sightlines)
- High-performance fixed framing provides a 6¾" system depth, 2½" sightline
- Pressure plate system for easy field glazing
- Screw spline frame construction
- Transom and sidelite elevation configurations available



Series B7600 Fixed Meets GSA Condition 2, GSA Condition 3a

Window series: B7600 Entry System — General Specifications & Details

- Nominal Frame/Door Panel Thickness: 0.125"
- Test Size:
44½" x 88¼"
- Glazing Options:
3/16" tempered, 9/16" airspace, ¼" laminated
- Muntins: Grids between lites of IG

- Finish Options:
AAMA 2603 — Standard acrylic or polyester
AAMA 2604 — 2 coat 50% fluoropolymer
AAMA 2605 — 2 coat fluoropolymer 70% kynar
Powder Coat
Anodized
- Hardware:
Standard Handle with Lock/Latch
- Accessories:
Frame Family: B7600
Fixed Lite Option System: B7600
- Exceptions: Call Graham sales rep or see website for more information

Our products are tested to the standards of and certified by the American Architectural Manufacturer's Association and the National Fenestration Rating Council.



B7600 Blast Entry System Single Panel & Subframe

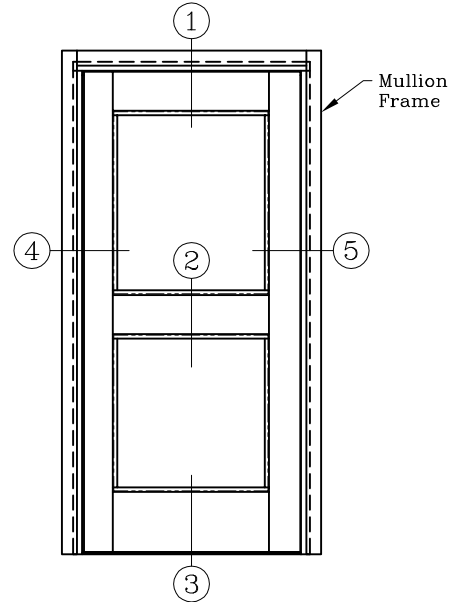
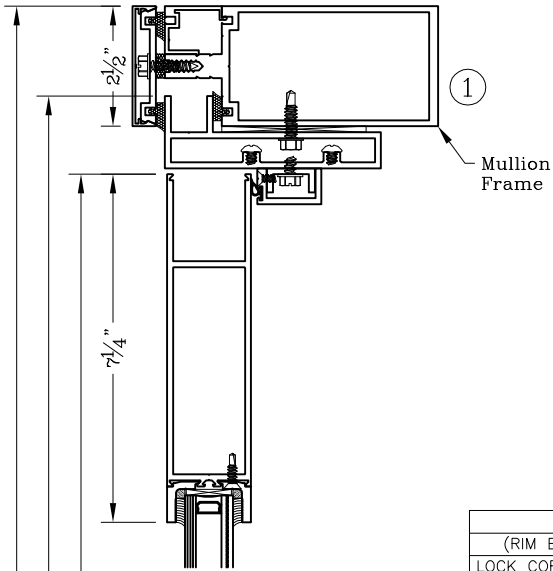


Series: B7600

Manufacturing Code: B7601

Drawing 1/2 Scale – For Custom Size Drawing Contact Graham

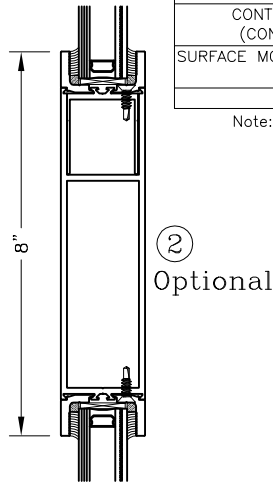
Note: Sealant Not Shown On Details. Consult Technical Services At Factory For Sealing Procedures.



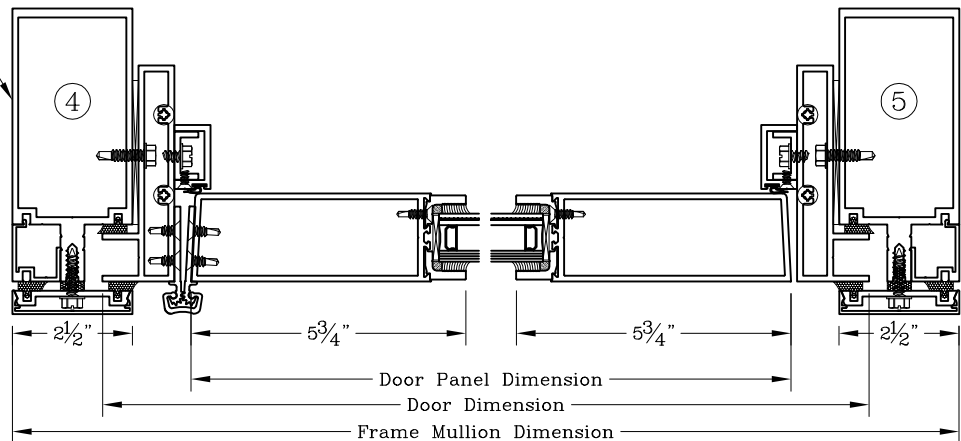
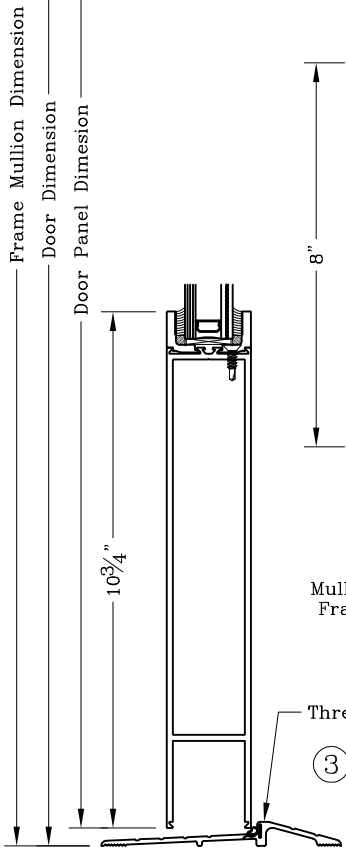
HARDWARE

RIM PANIC DEVICE / TRIM
(RIM EXIT DEVICE #2103 X C1703A 3'-0")
LOCK CORE - (ACTIVE LEAF) (CYLINDER RIM FOR EXIT DEVICE)
CONTINUOUS HINGE 84" DOOR PANEL (CONTINUOUS HINGE #A110HDC083)
SURFACE MOUNTED CLOSER (DOOR CLOSER #4550 EDA X ALUM)
GRAHAM THRESHOLD

Note: Panel Widths 36", 42" and 48".



② Optional



B7600 Blast Entry System

Single Panel, Transom & Sidelites

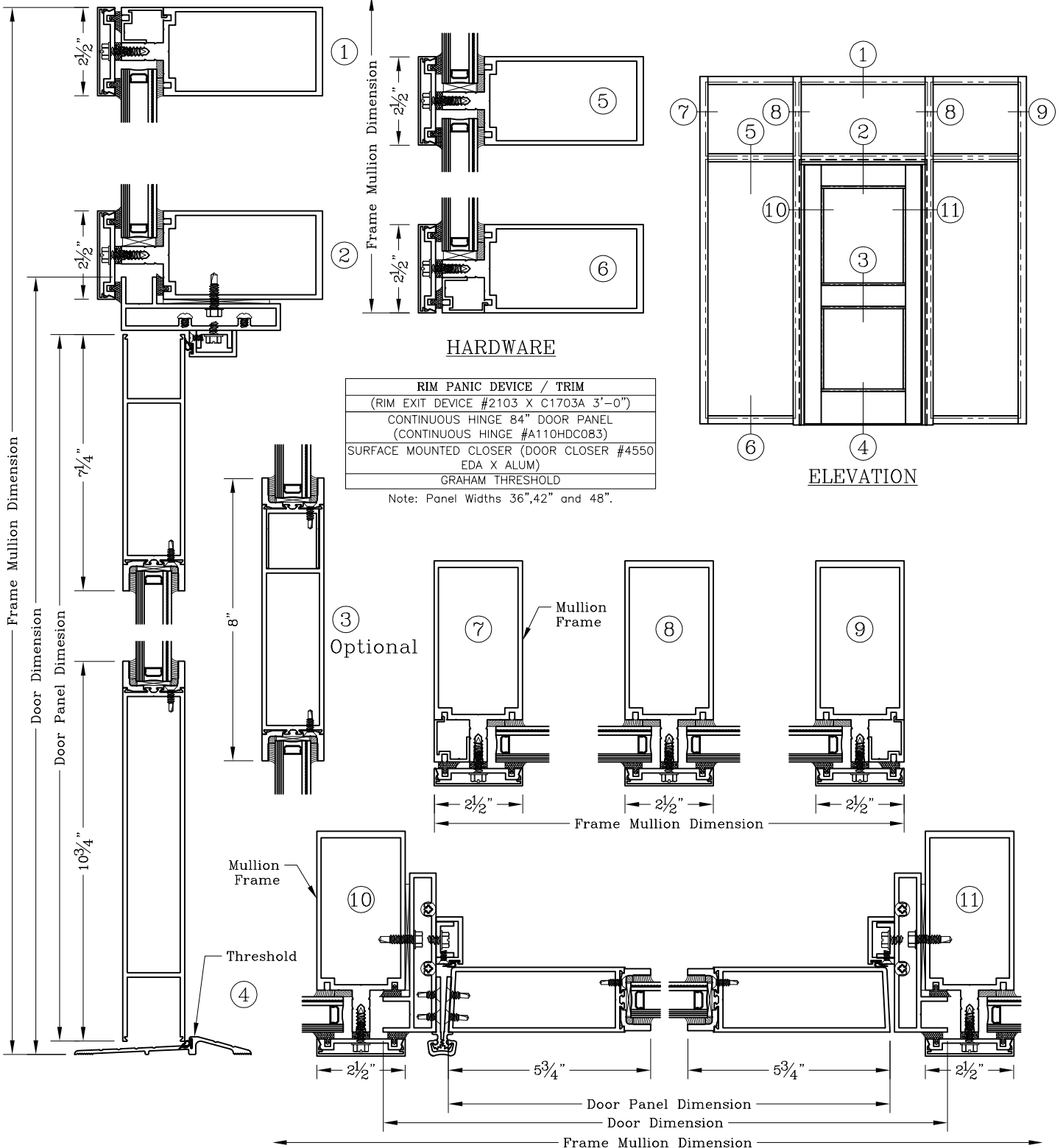


Series: B7600

Manufacturing Code: B7602

Drawing 1/2 Scale – For Custom Size Drawing Contact Graham

Note: Sealant Not Shown On Details. Consult Technical Services At Factory For Sealing Procedures.



B7600 Blast Entry System Single Panel & Subframe

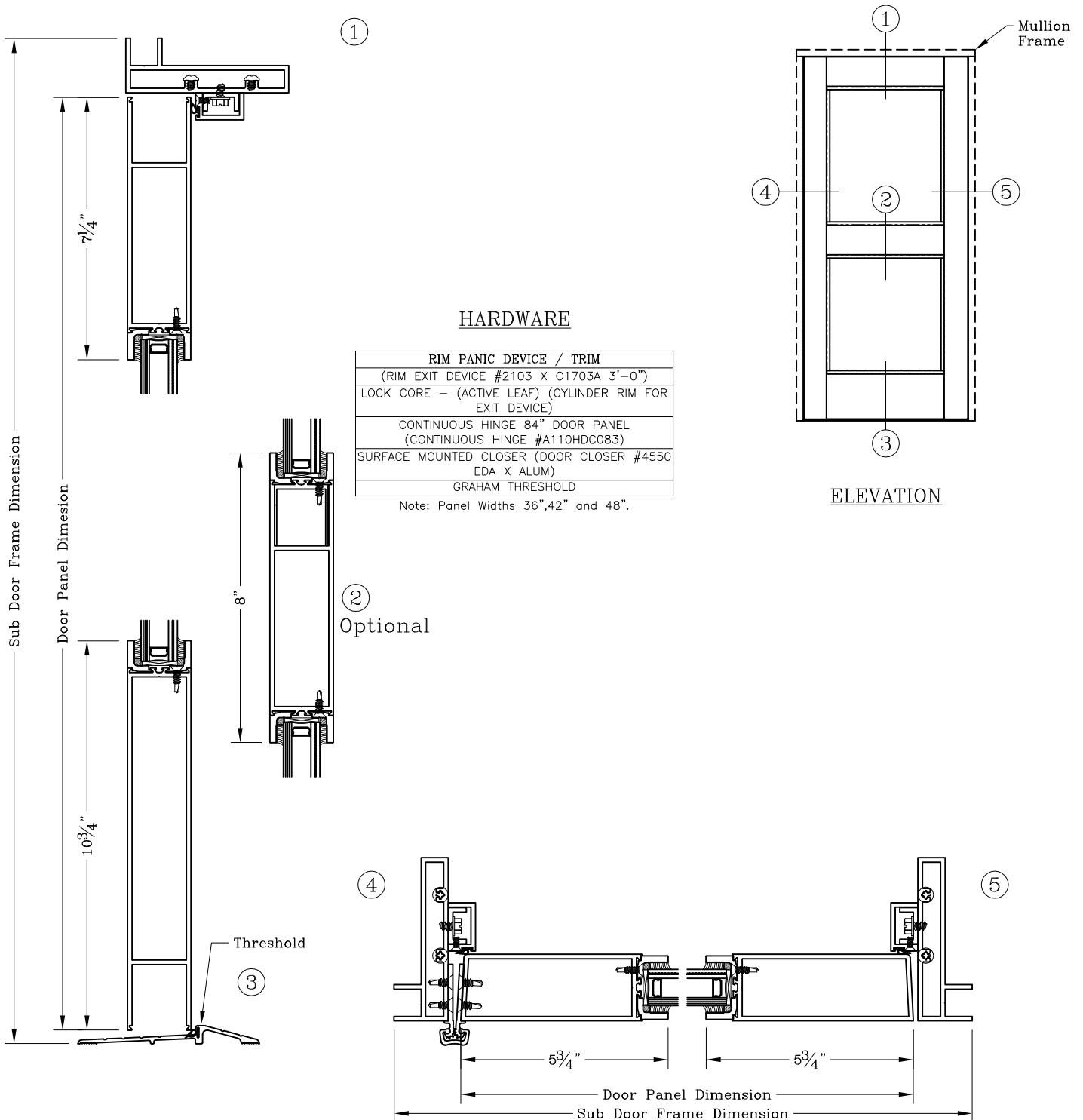


Series: B7600

Manufacturing Code: B7603

Drawing 1/2 Scale – For Custom Size Drawing Contact Graham

Note: Sealant Not Shown On Details. Consult Technical Services At Factory For Sealing Procedures.



B7600 Blast Entry System Double Panel & Subframe

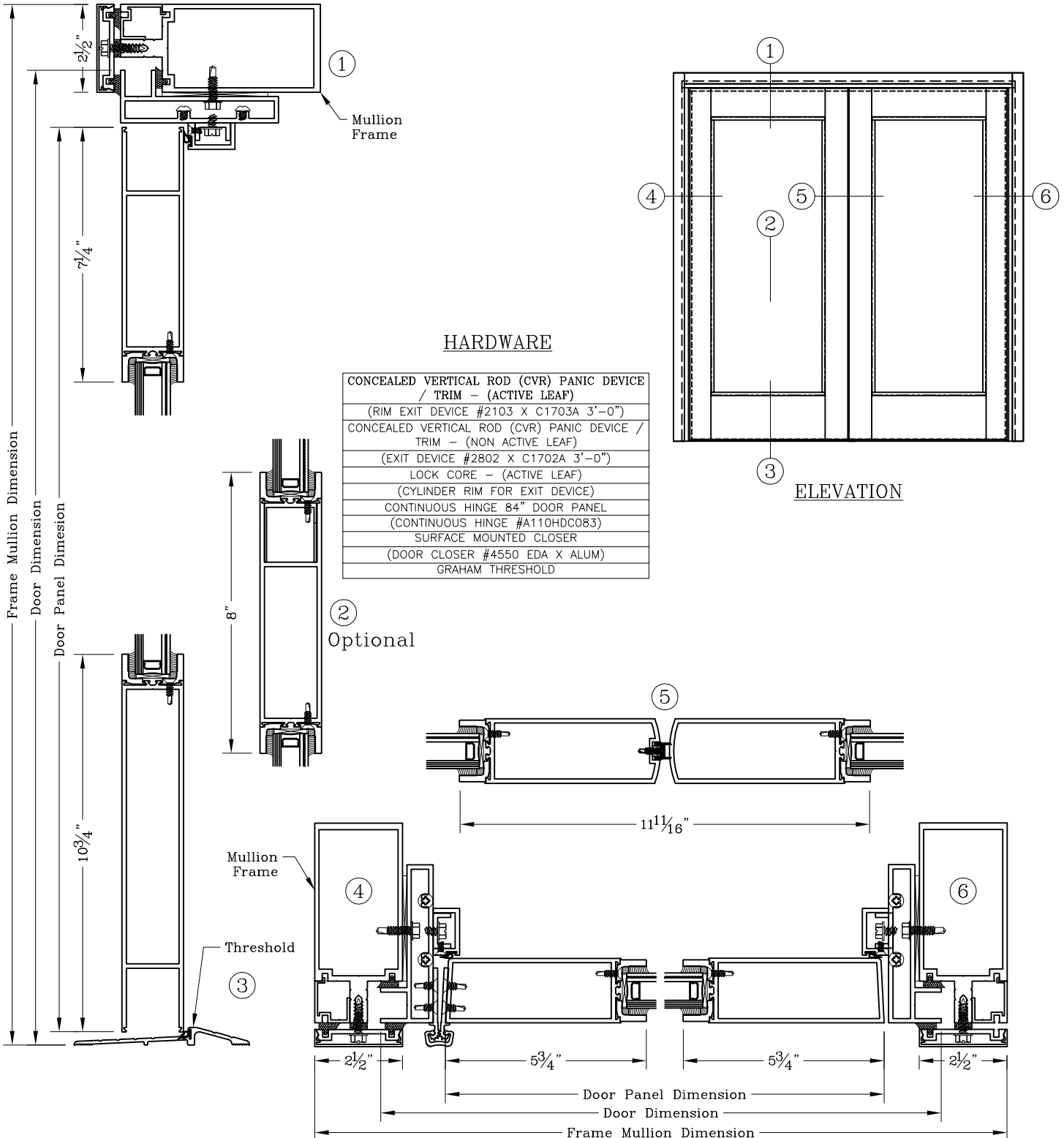


Series: B7600

Manufacturing Code: B7605

Drawing 1/2 Scale – For Custom Size Drawing Contact Graham

Note: Sealant Not Shown On Details. Consult Technical Services At Factory For Sealing Procedures.



B7600 Blast Entry System Double Panel, Transom & Sidelites

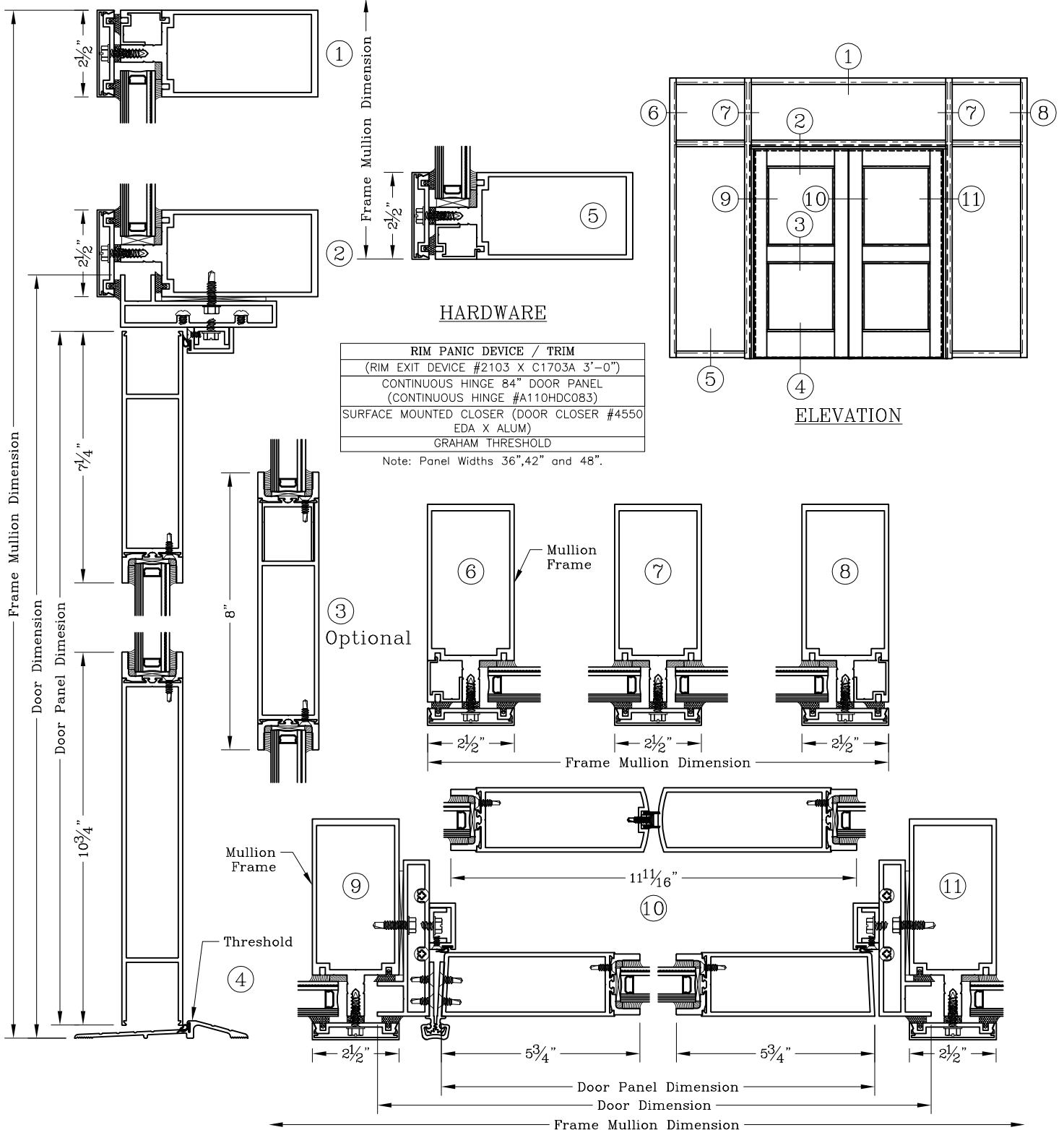


Series: B7600

Manufacturing Code: B7606

Drawing 1/2 Scale – For Custom Size Drawing Contact Graham

Note: Sealant Not Shown On Details. Consult Technical Services At Factory For Sealing Procedures.



B7600 Blast Entry System Double Panel & Subframe

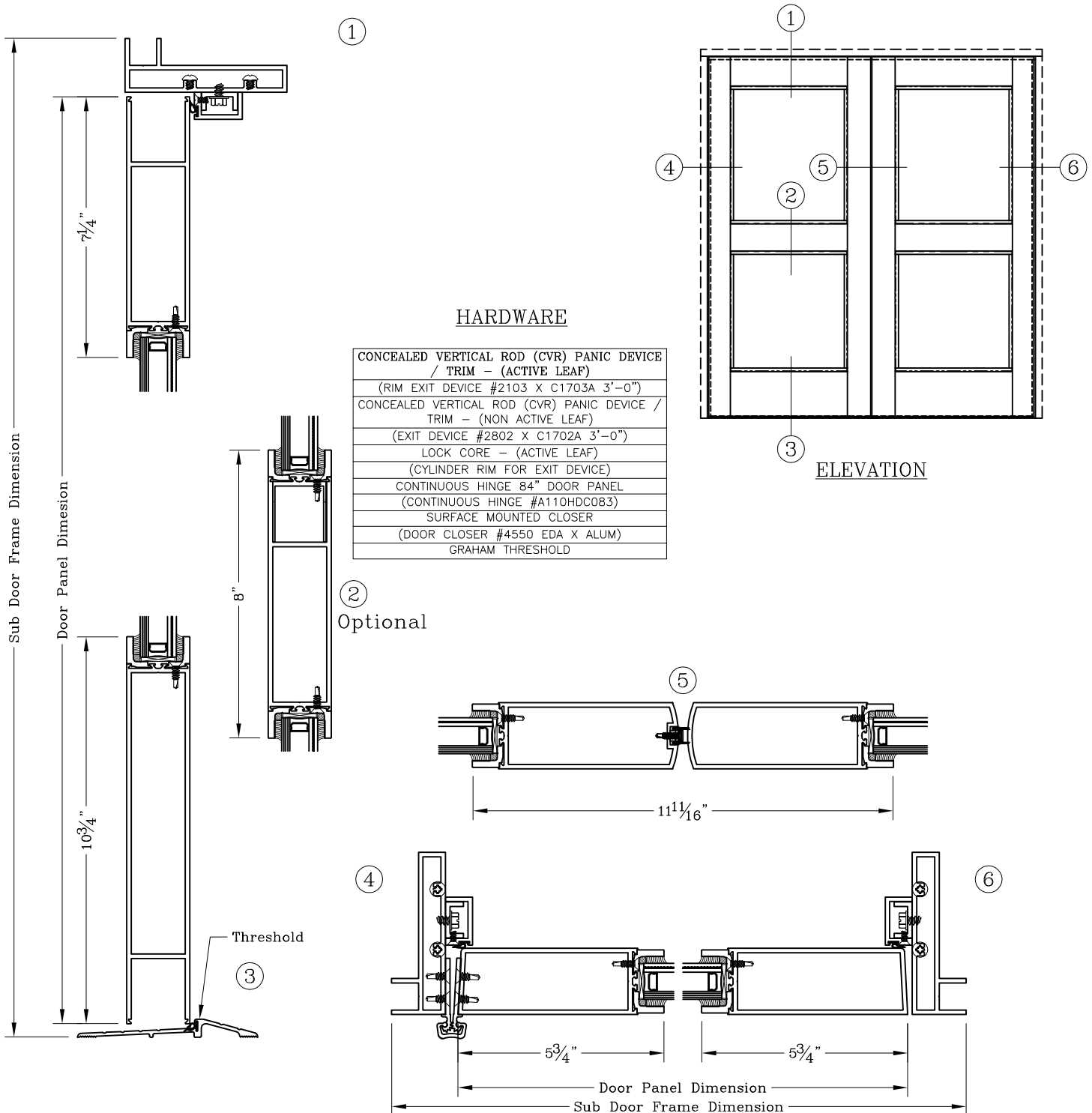


Series: B7600

Manufacturing Code: B7607

Drawing 1/2 Scale – For Custom Size Drawing Contact Graham

Note: Sealant Not Shown On Details. Consult Technical Services At Factory For Sealing Procedures.



B7600 Blast Entry System Subframe

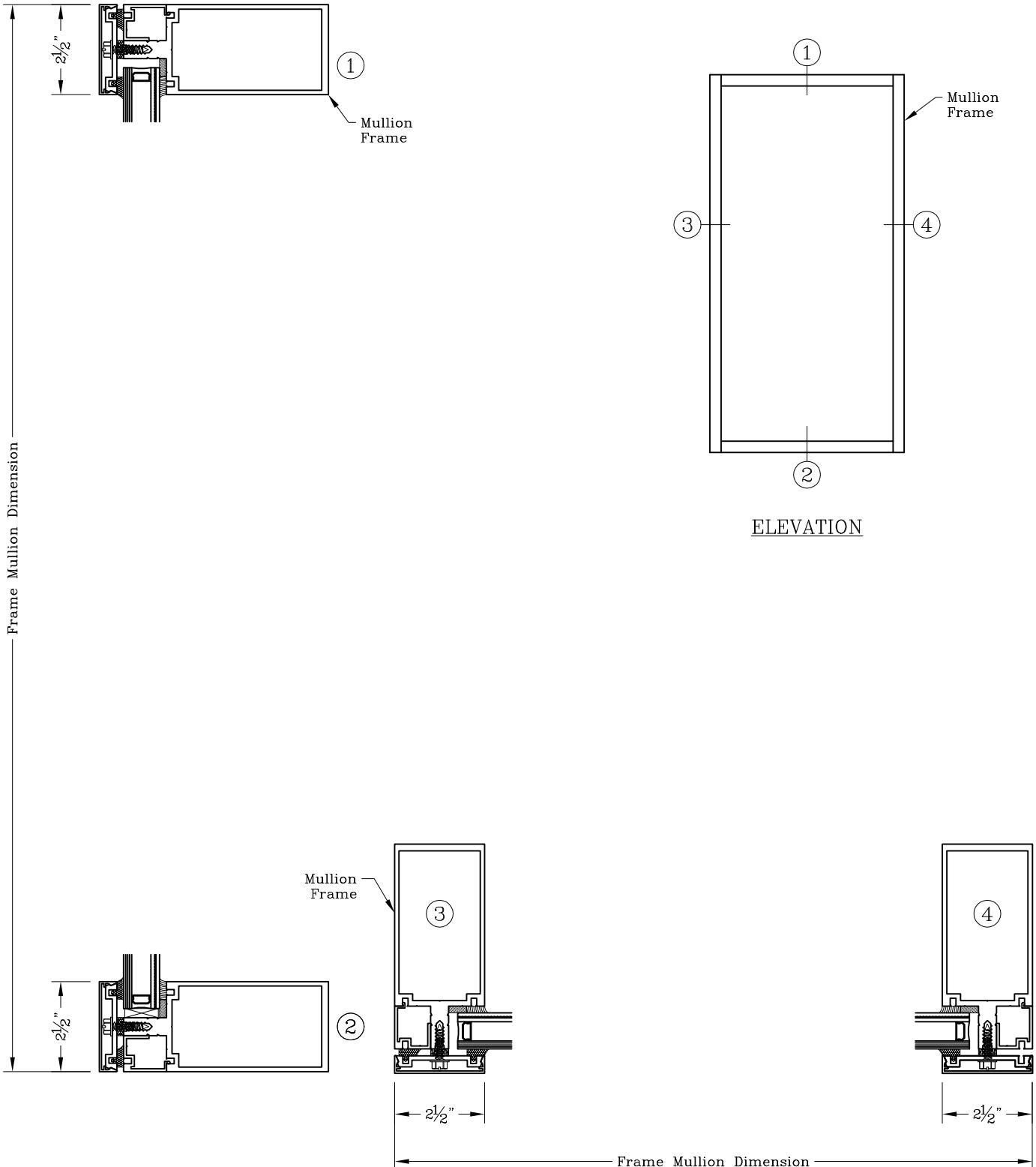


Series: B7600

Manufacturing Code: B7610

Drawing 1/2 Scale – For Custom Size Drawing Contact Graham

Note: Sealant Not Shown On Details. Consult Technical Services At Factory For Sealing Procedures.



ELEVATION

B7600 Blast Entry System Subframe Transom & Sidelites

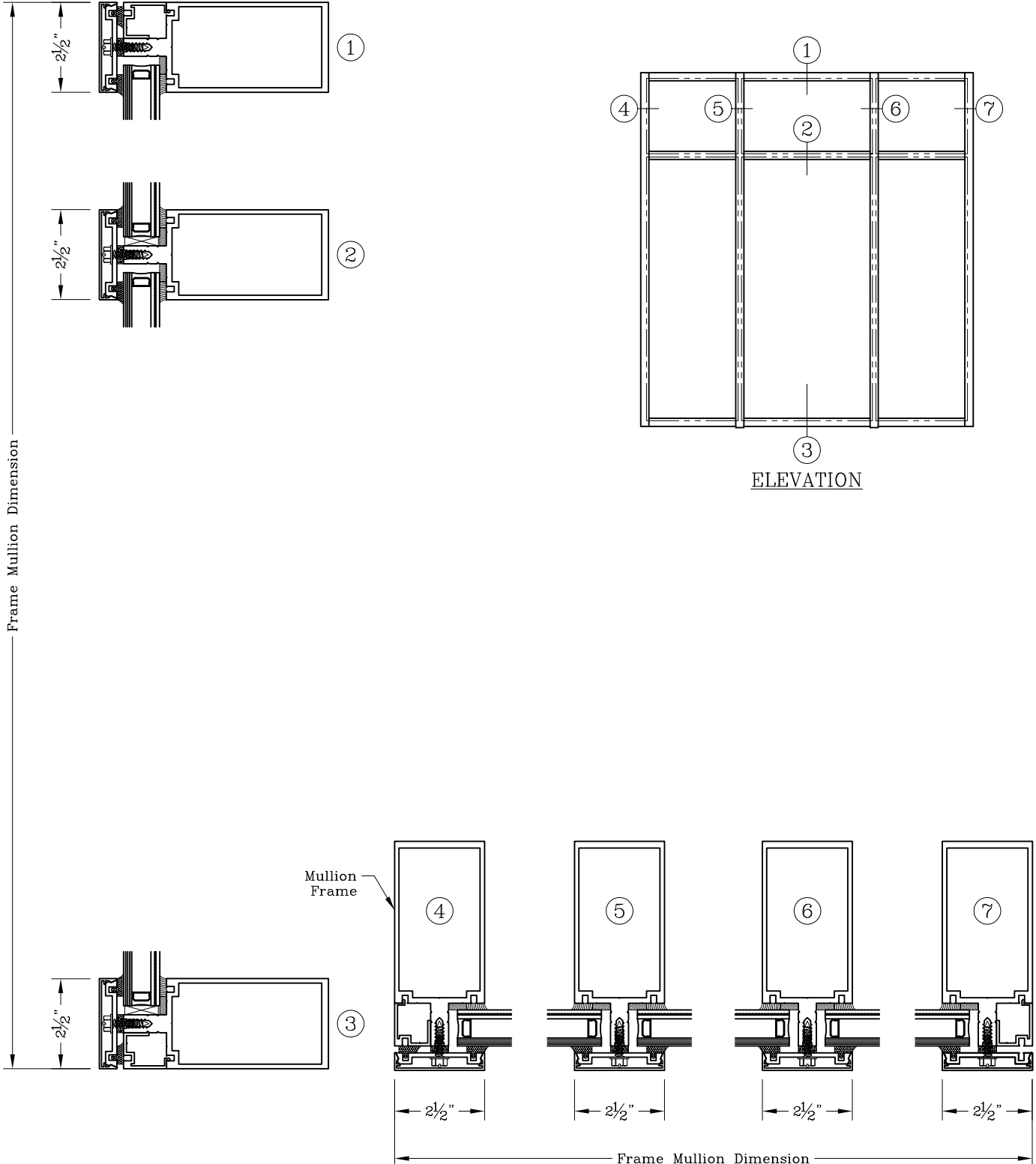


Series: B7600

Manufacturing Code: B7611

Drawing 1/2 Scale – For Custom Size Drawing Contact Graham

Note: Sealant Not Shown On Details. Consult Technical Services At Factory For Sealing Procedures.



B7600 Blast Entry System Subframe

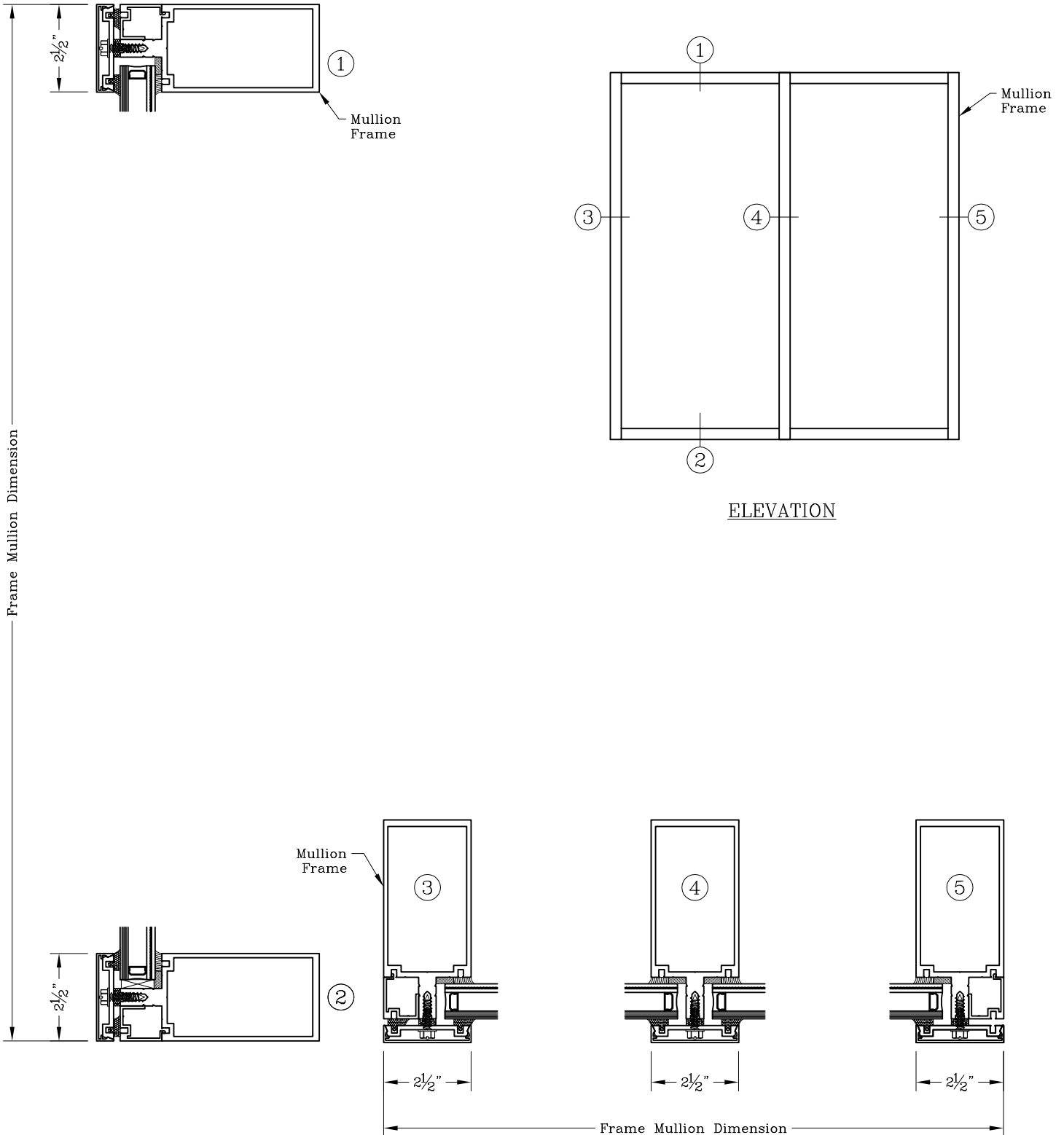


Series: B7600

Manufacturing Code: B7612

Drawing 1/2 Scale – For Custom Size Drawing Contact Graham

Note: Sealant Not Shown On Details. Consult Technical Services At Factory For Sealing Procedures.



ELEVATION

B7600 Blast Entry System Subframe Transom & Sidelites



Series: B7600

Manufacturing Code: B7613

Drawing 1/2 Scale – For Custom Size Drawing Contact Graham

Note: Sealant Not Shown On Details. Consult Technical Services At Factory For Sealing Procedures.

