

GT4200 SERIES DATA SHEET

TYPE	AAMA RATING & TEST SIZE	AIR (cfm/ft ²) at 50 mph	WATER (psf)	DESIGN PRESSURE (psf)	STRUCTURAL OVERLOAD (psf)	U-VALUE (BTU/hr/ft ² /°F) ¹
HORIZONTAL SLIDING	HS-AW40 99 x 79	0.23	8.36	40.13	75.24	0.39 – 0.46

¹U-values will vary depending upon glazing selected

GT4200 SERIES QUICK VIEW:

Highly energy efficient horizontal sliding window available in several configurations that can mull to other GT products of the same frame depth. Ideal for university, public and military housing applications.

STANDARD FEATURES

- 3¾" frame depth
- Removable sash
- Thermal strut technology for superior U-factors
- Dual finish capability
- EPDM dry glazed to accommodate field installation
- 1" overall glazing
- White bronze or auto-lock hardware

OPTIONAL FEATURES

- Dual finish (two-tone color) option
- Available in XO, XOX, and OXO configurations



Window series: GT4200 Horizontal Sliding — General Specifications & Details

- Applications: Industrial, University, and Public/Military Housing
- Max. Test size: 8'4" x 6'7"
- Mulling: Mulls to operable and fixed units with 3¾" frame depth
- Glazing Thickness: 1" insulating glass; dry glazed
- Muntins: Between-the-glass grids

- Finish Options:
 - AAMA 2603 — Standard acrylic or polyester
 - AAMA 2604 — 2 coat 50% fluoropolymer
 - AAMA 2605 — 2 coat fluoropolymer 70% kynar
 - Powder Coat
 - Anodized
- Hardware:
 - Stainless steel rollers
 - White bronze sweep locks
- Accessories:
 - Frame Family: 3¾"
 - Mullions:
 - Stacking: Stack mull
 - Side: 3-piece-mull
 - Panning: Available
 - Trims: Available
 - Receptor Systems: Available
- Exceptions: Call Graham sales rep or see website for more information

Our products are tested to the standards of and certified by the American Architectural Manufacturer's Association and the National Fenestration Rating Council.



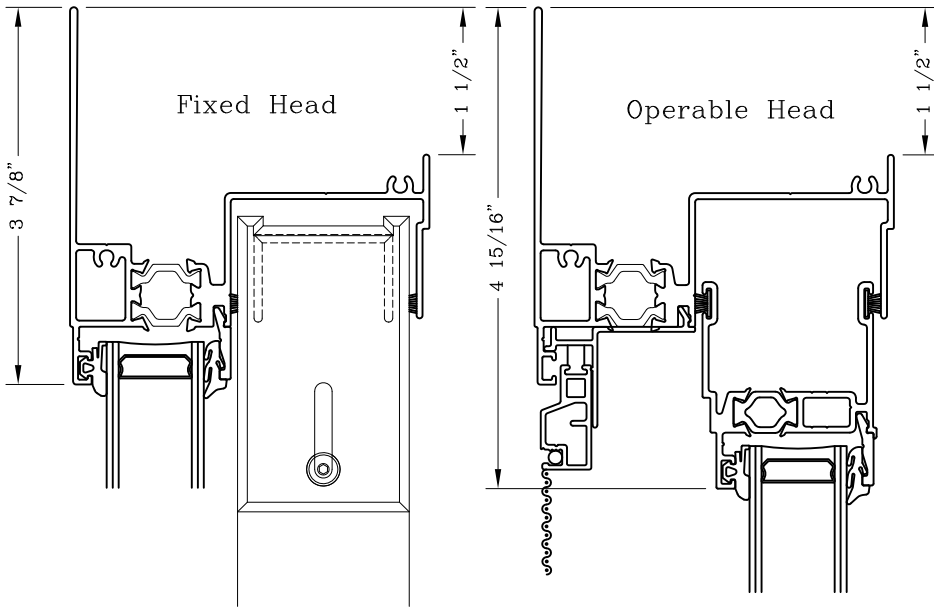
Horizontal Slider – 3 3/4” Frame Options



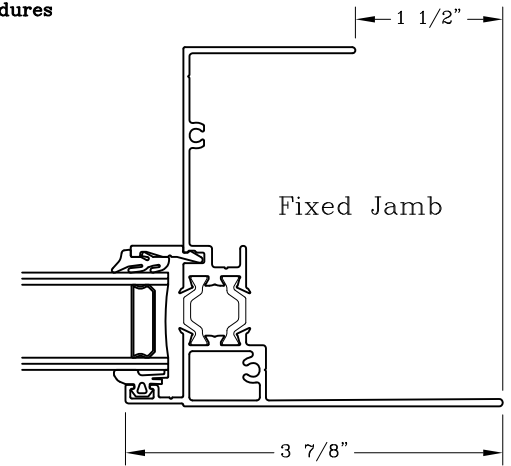
Series: GT4200 (Formerly: 4200) MFG Code: GT4200.OPT

Drawn 1/2 Scale – For Custom Size Drawings Contact Graham

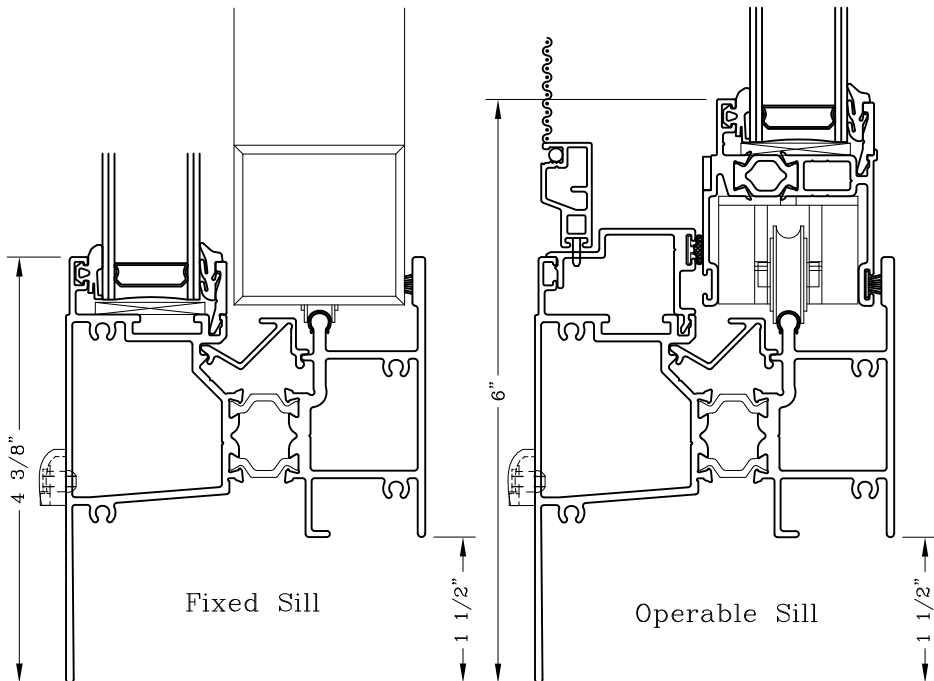
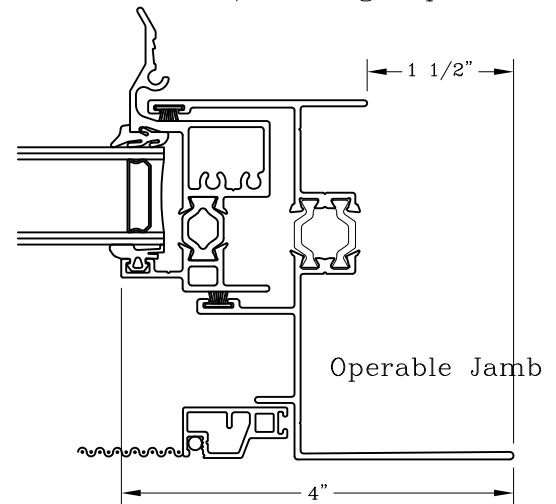
Note: Sealant not shown on details. Consult Technical Services for sealing procedures



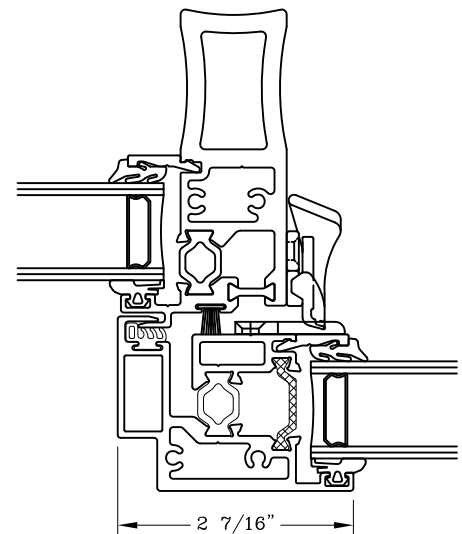
1 1/2” Flange Option



1 1/2” Flange Option



1 1/2” Flange Option



Heavy Duty Meeting Stiles Option

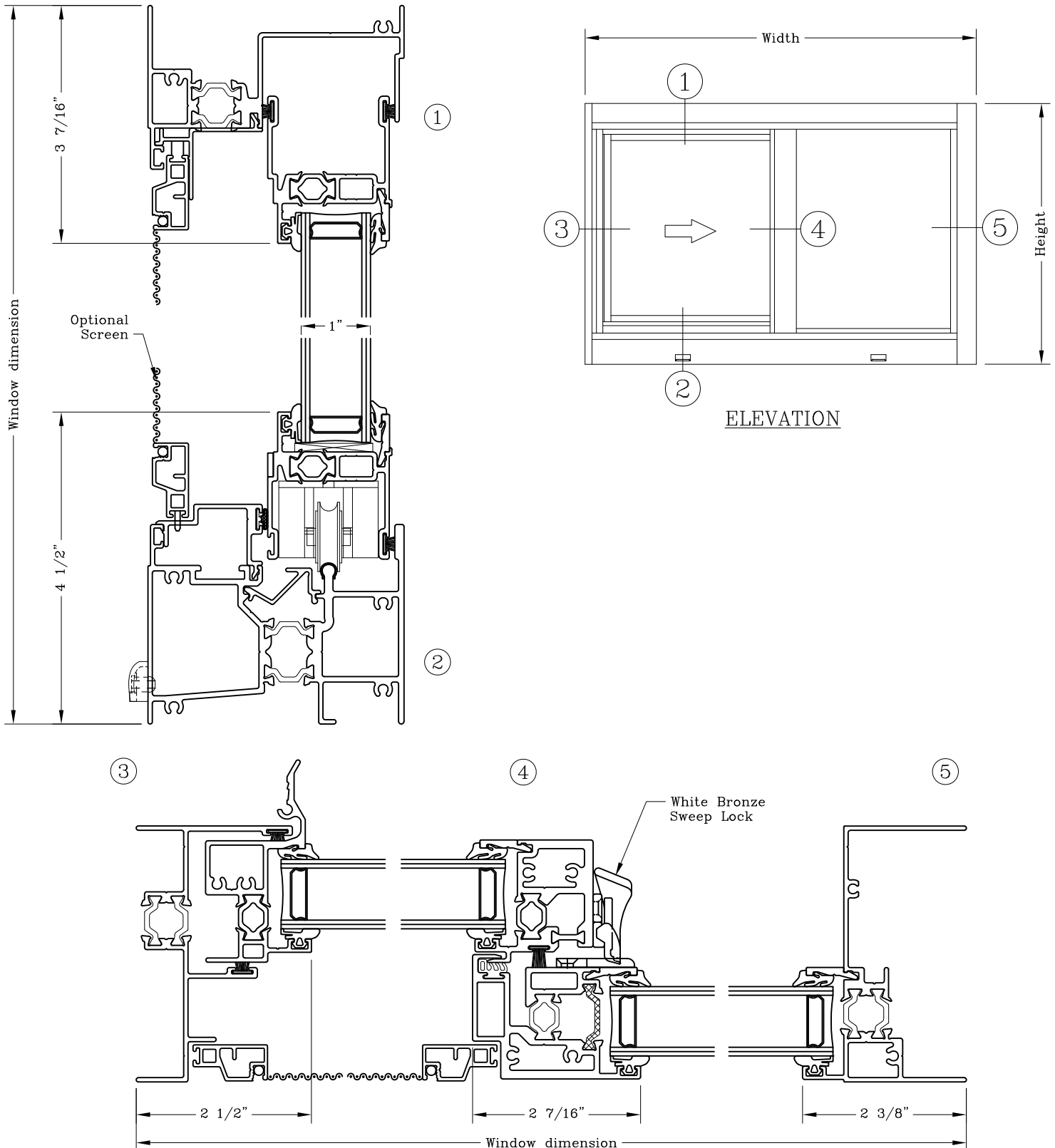
Horizontal Slider – 3 3/4” "X0"



Series: GT4200 (Formerly: 4200) MFG Code: GT4201.3750

Drawn 1/2 Scale – For Custom Size Drawings Contact Graham

Note: Sealant not shown on details. Consult Technical Services for sealing procedures



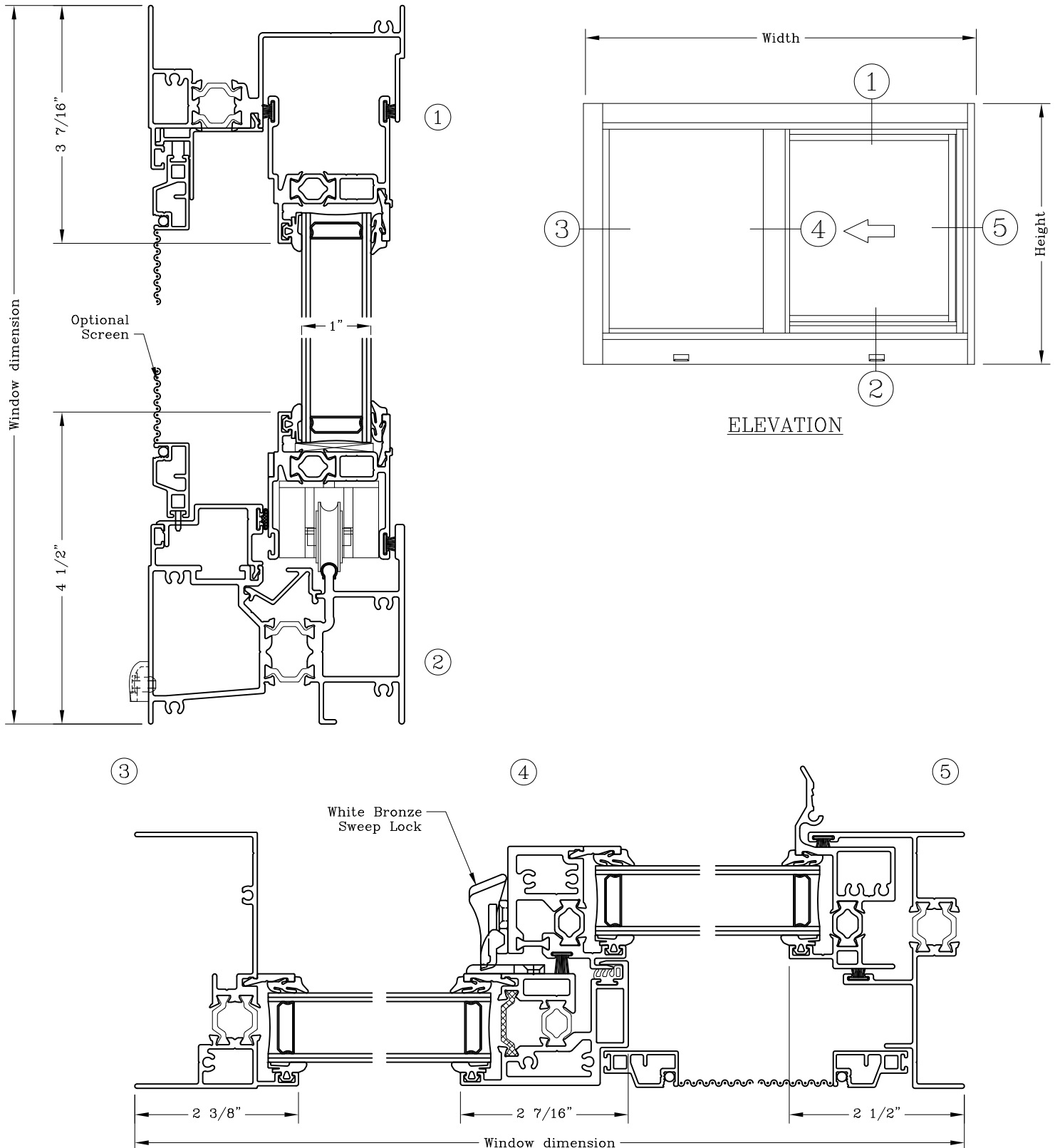
Horizontal Slider – 3 3/4” ”OX”



Series: GT4200 (Formerly: 4200) MFG Code: GT4202.3750

Drawn 1/2 Scale – For Custom Size Drawings Contact Graham

Note: Sealant not shown on details. Consult Technical Services for sealing procedures



Horizontal Slider – 3 3/4” "XOX"



Series: GT4200 (Formerly: 4200) MFG Code:

GT4203.3750

Drawn 1/2 Scale – For Custom Size Drawings Contact Graham

Note: Sealant not shown on details. Consult Technical Services for sealing procedures

