

HI1100 SERIES DATA SHEET



Type	Frame Depth (inches)	Series	Model Code	Glazing*	Missile		Design Pressure (psf)		Water (psf)	Test Size (inches)
					Large	Small	Pos (+)	Neg (-)		
Fixed-Acoustical	4½	HI1100	HI1101	Single Lami Exterior Tempered Interior	✓	Meets	40	40	12	72 x 74
Fixed-Acoustical	5	HI1100	HI1103	Single Lami	✓	Meets	60	60	9	50 x 79

*Additional glazing and test configurations may be available – contact Graham.

STANDARD FEATURES

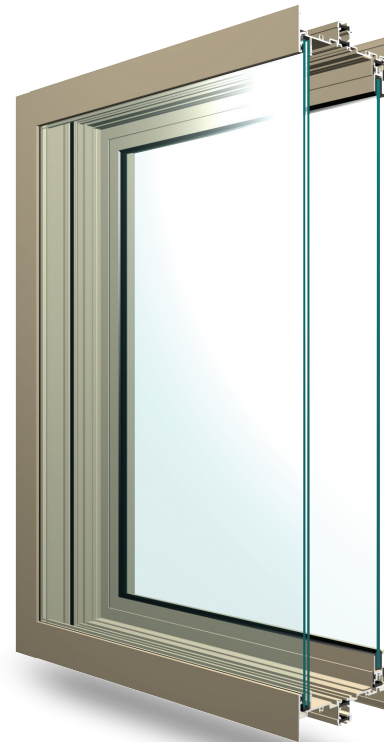
- Fixed dual acoustical windows for hurricane-impact resistance
- Provides ASTM level D, wind zone 4, large missile impact protection
- Offers passive protection from wind-borne debris without shutters!
- Mulls to fixed and operable products of the same frame depth
- Thermally broken frame with dual glazing for superior energy savings
- Coped corner construction

INSTALLATION METHODS

- Pre-set panning
- Trim & clip
- Wraparound panning
- Receptor & subsill
- Through-frame anchors at head and jambs; trim and clip at sill

OPTIONAL FEATURES

- High-performance acoustical ratings available – contact Graham
- High-performance energy-efficient options available
- Applied flat-stock grids



TESTED TO: ASTM E1886, ASTM E1996 AND/OR TAS 201, TAS 202, TAS 203

Window series: HI1100 Fixed – General Specifications & Details

- **Materials:**
All frame sections shall be thermally broken extruded aluminum shapes produced from commercial quality 6063-T6 alloy
- **Finish Options:**
AAMA 2603, 2604, & 2605, as well as powder coat and anodized finishes, are all available in a wide range of colors
- **Accessories:**
Wide range of panning & trim options available

HI1101 FEATURES

- Fixed dual acoustical window
- 4½" frame depth
- Poured polyurethane thermal-break frame
- Dual glazed: exterior lami; interior tempered glass
- Large missile +40/-40 DP performance

HI1103 FEATURES

- Fixed dual acoustical window
- 5" frame depth
- Poured polyurethane thermal-break frame
- Dual single-glazed laminated glass
- Large missile +60/-60 DP performance

Our products are tested to the standards of and certified by the American Architectural Manufacturer's Association and the National Fenestration Rating Council.



Hurricane Impact – 5” Dual Fixed (Large Missile)

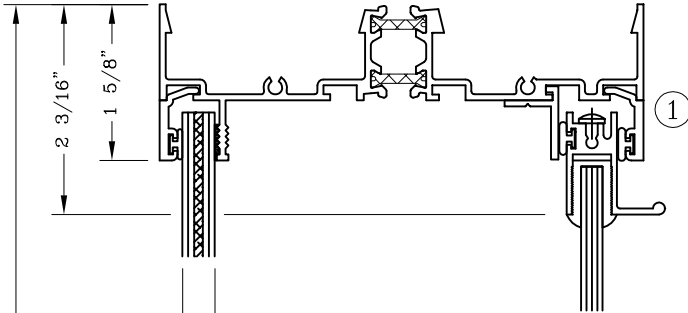


Series: HI1100

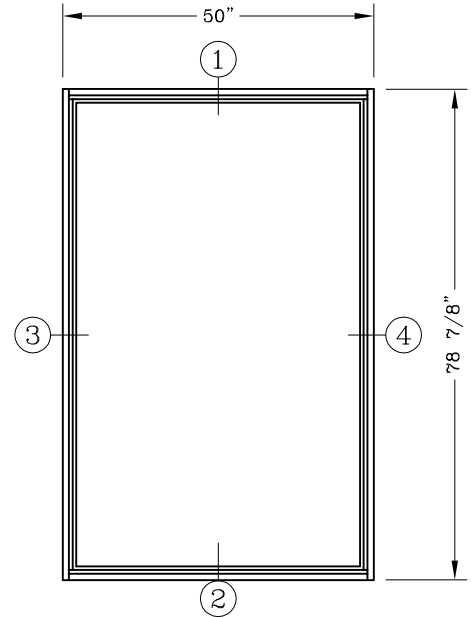
Manufacturing Code: HI1104

Drawing 1/2 Scale – For Custom Size Drawing Contact Graham

Note: Sealant Not Shown On Details. Consult Technical Services At Factory For Sealing Procedures.



Glazing To Be:
5/16" Lami Consisting Of;
1/8" Thick Annealed Exterior,
.090 PVB Interlayer (Solutia),
1/8" Thick Annealed Interior,
And
1/4" Thick Heat Strengthened Interior



ELEVATION

50" x 78 7/8" Tested

INSTALLATION TYPES

1. Through Frame Anchors At Head And Jambs And Sill Anchored Trim And Clip.
(Reference Test Report #85747.01-109-44)

