

Horizontal Slider - 3 1/4"

W/O Screen Track

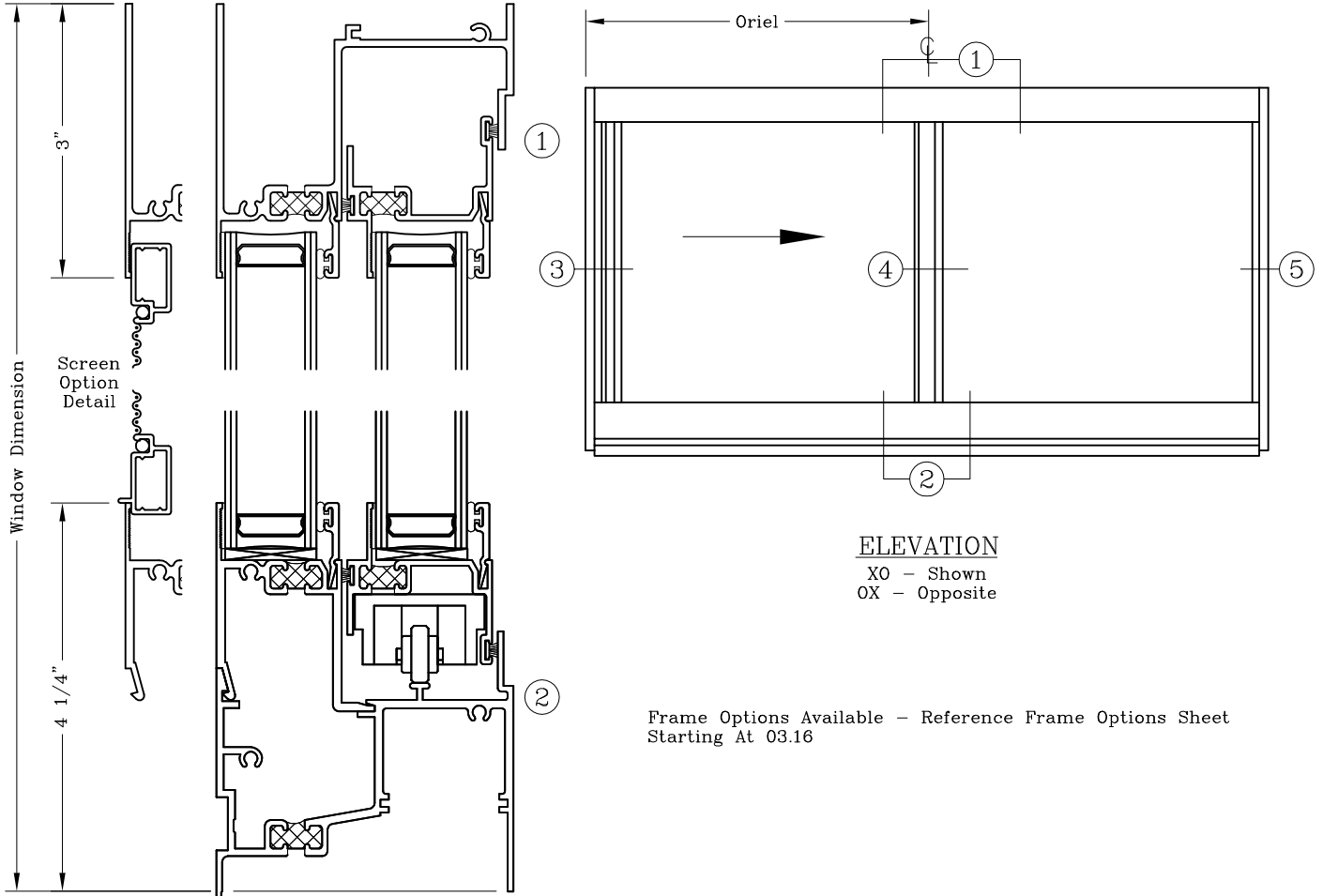


Series: 0300

Manufacturing Code: 0301

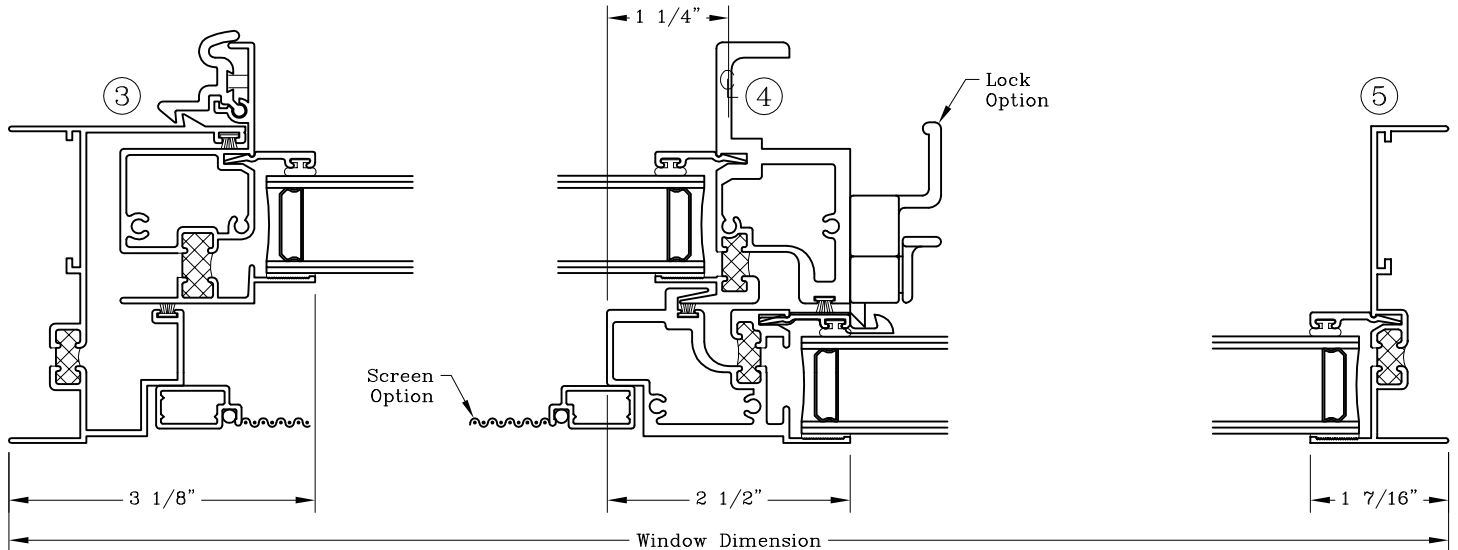
Drawing 1/2 Scale - For Custom Size Drawing Contact Graham

Note: Sealant Not Shown On Details. Consult Technical Services At Factory For Sealing Procedures.



Frame Options Available - Reference Frame Options Sheet Starting At 03.16

Pan Leg For Attached Panning Only
Equal Leg Used For All Other Applications



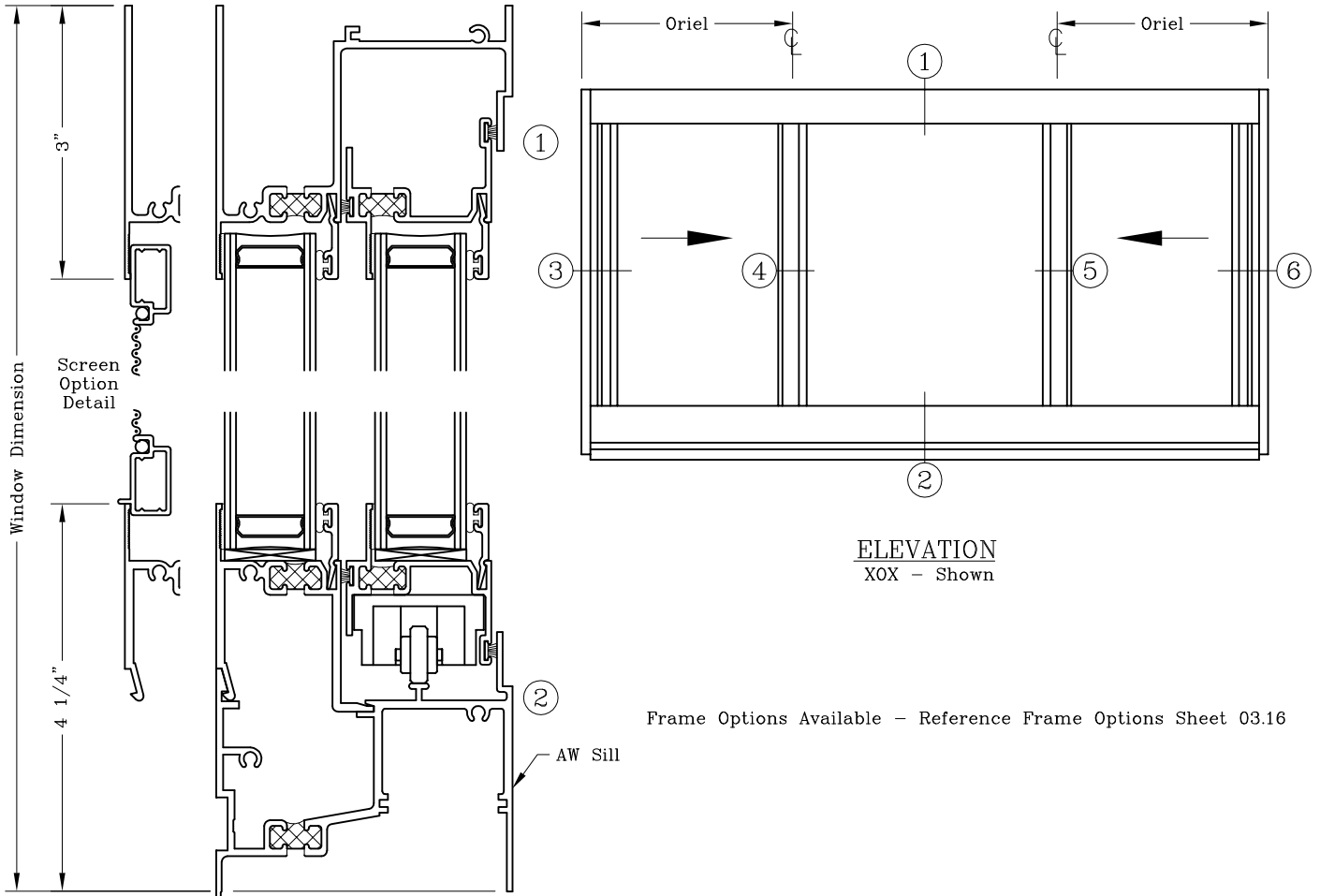
Horizontal Slider – 3 1/4” W/O Screen Track AW Option Series: 0300



Manufacturing Code: 0302

Drawing 1/2 Scale – For Custom Size Drawing Contact Graham

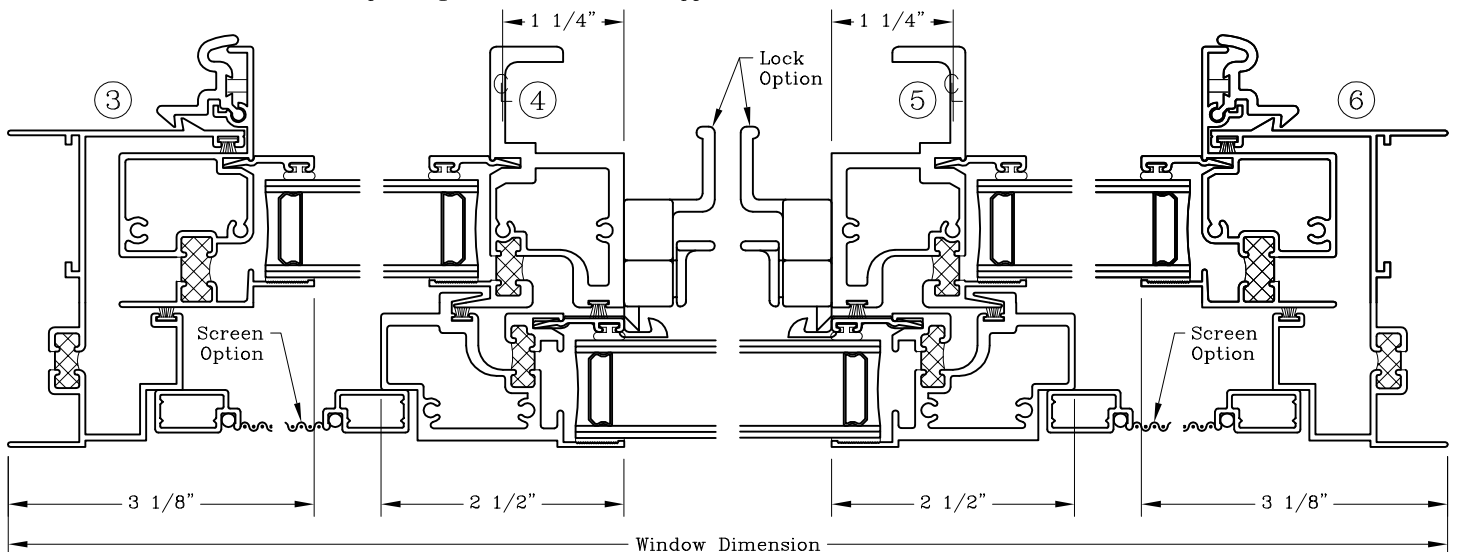
Note: Sealant Not Shown On Details. Consult Technical Services At Factory For Sealing Procedures.



ELEVATION
XOX – Shown

Frame Options Available – Reference Frame Options Sheet 03.16

Pan Leg For Attached Panning Only
Equal Leg Used For All Other Applications



Horizontal Slider - 3 1/4"

With Screen Track

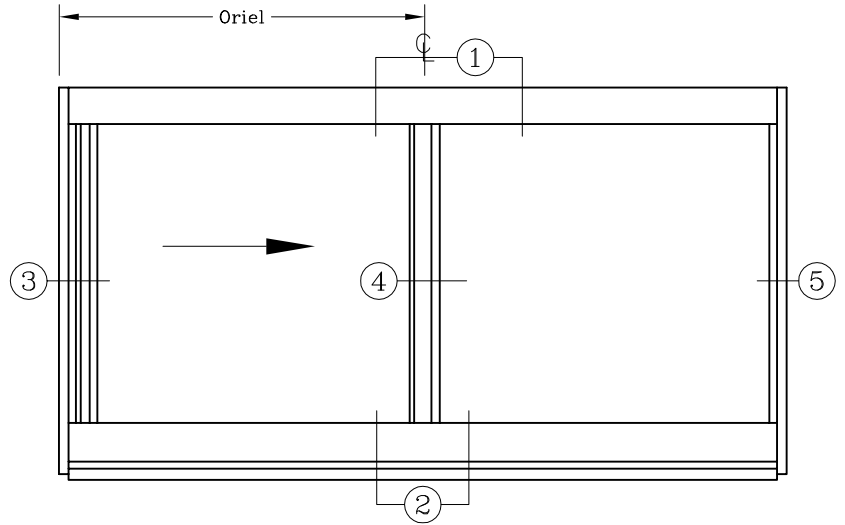
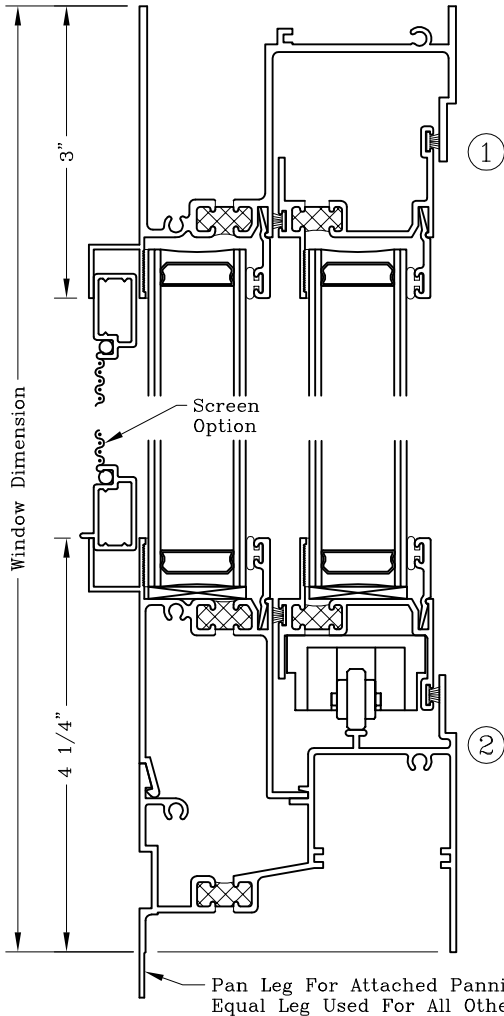


Series: 0300

Manufacturing Code: 0307

Drawing 1/2 Scale - For Custom Size Drawing Contact Graham

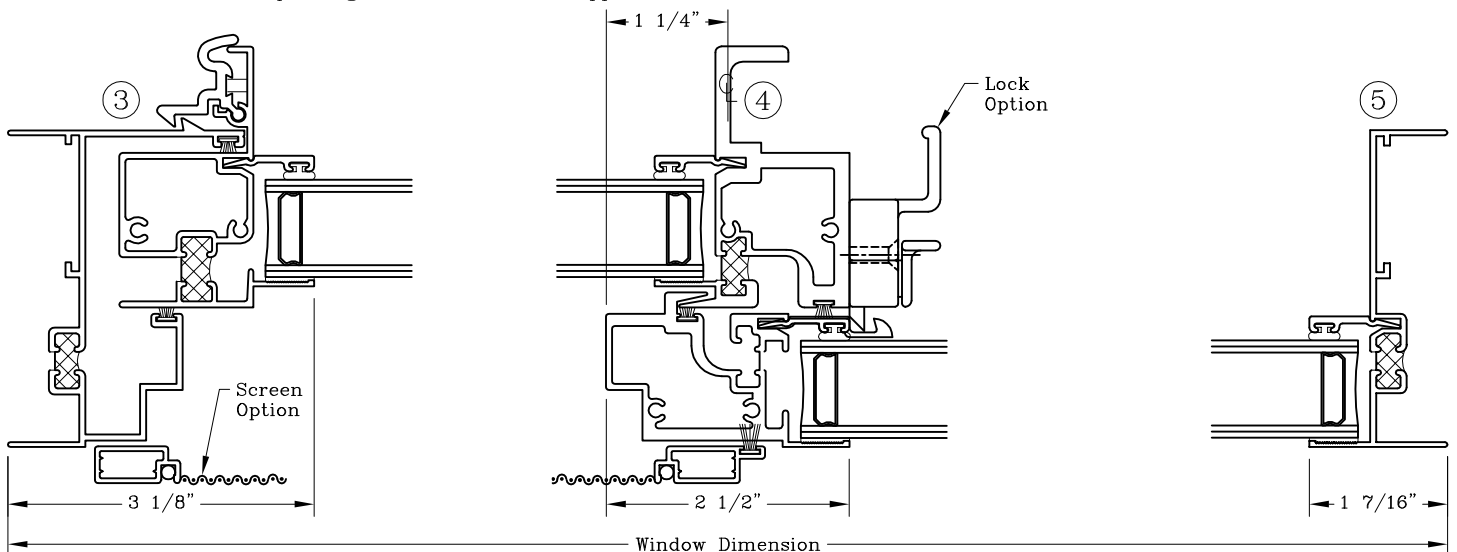
Note: Sealant Not Shown On Details. Consult Technical Services At Factory For Sealing Procedures.



ELEVATION

XO - Shown
OX - Opposite

Frame Options Available - Reference Frame Options Sheet 03.16



Horizontal Slider – 3 1/4” With Screen Track HC Sill

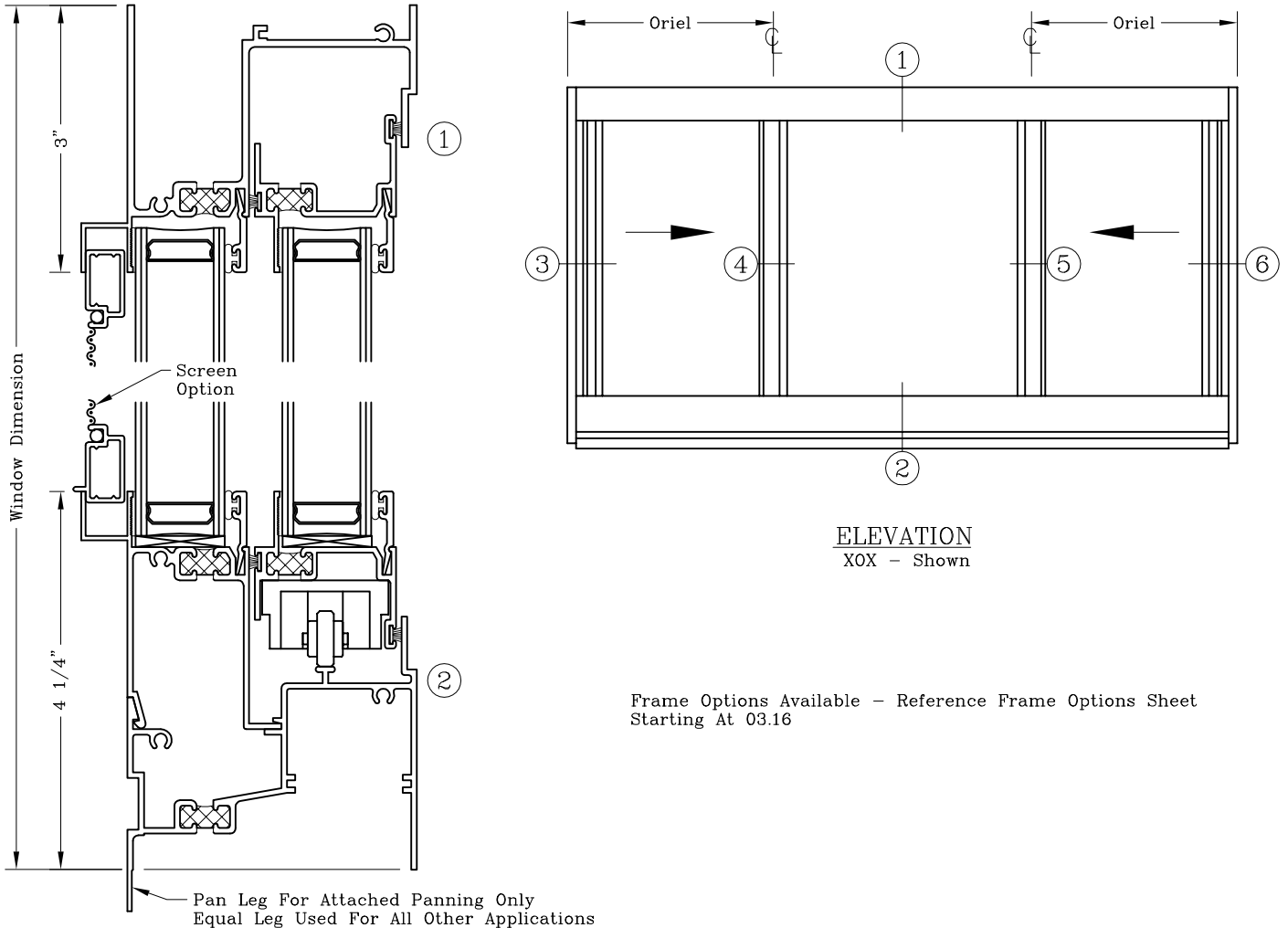


Series: 0300

Manufacturing Code: 0309

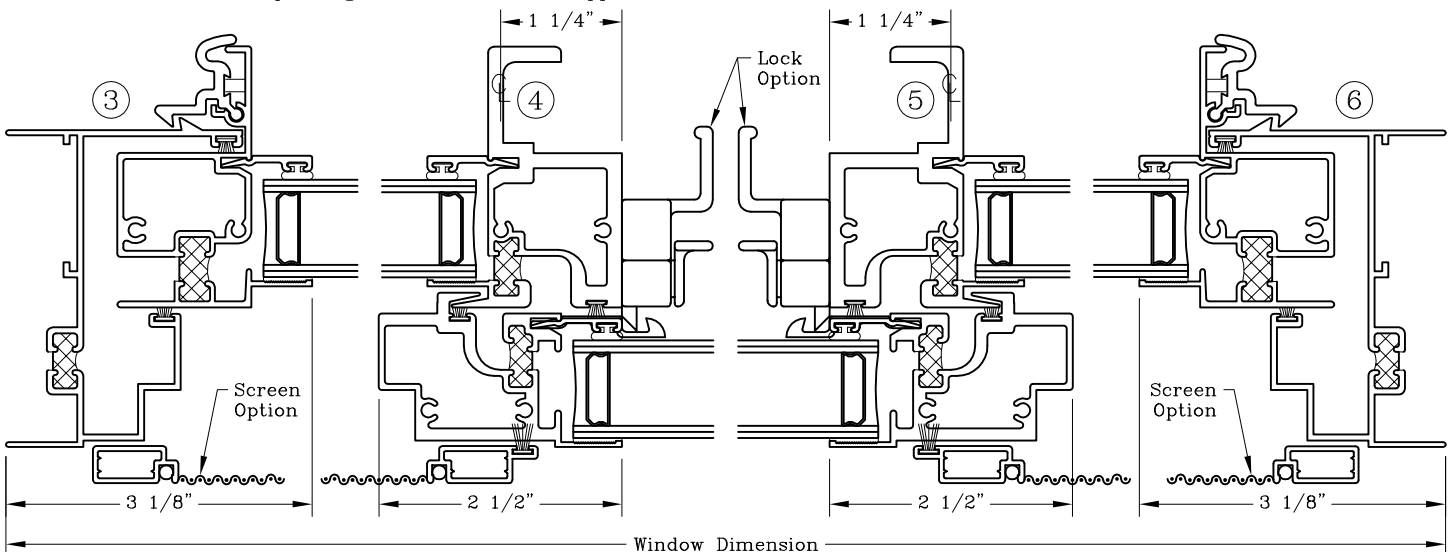
Drawing 1/2 Scale – For Custom Size Drawing Contact Graham

Note: Sealant Not Shown On Details. Consult Technical Services At Factory For Sealing Procedures.



ELEVATION
XOX – Shown

Frame Options Available – Reference Frame Options Sheet
Starting At 03.16



Frame Options - 3 1/4" Glazing Options

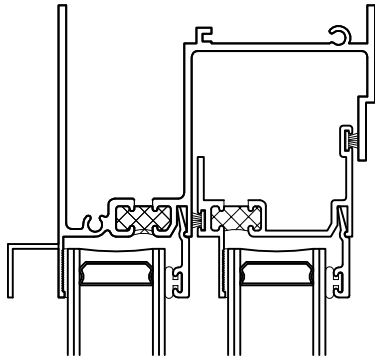


Series: 0300

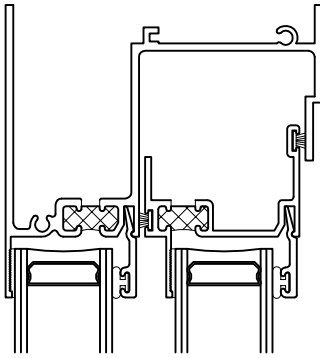
Manufacturing Code: 0316

Drawing 1/2 Scale - For Custom Size Drawing Contact Graham

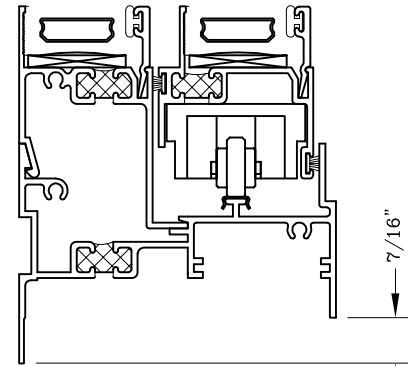
Note: Sealant Not Shown On Details. Consult Technical Services At Factory For Sealing Procedures.



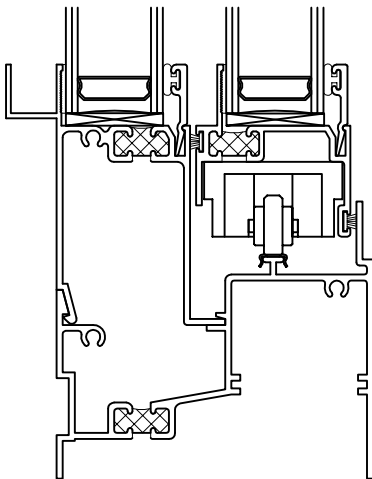
Head
w/ Screen
#030014



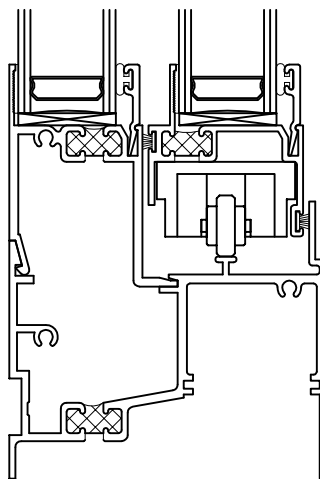
Head
w/o Screen
#030010



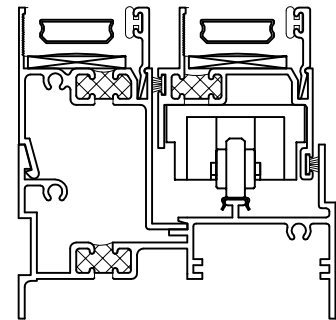
Low Sill Panning Leg
#030026



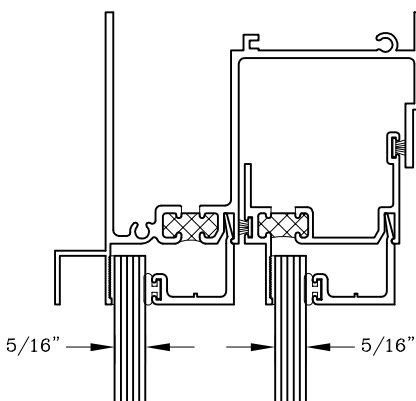
HC Sill Equal Leg
#030021



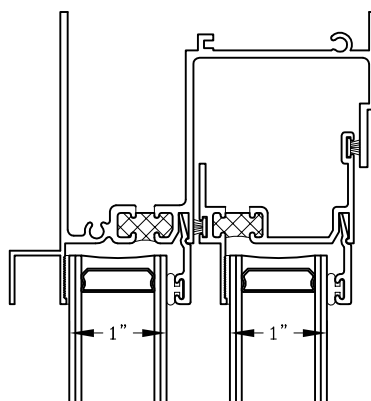
AW Sill Equal Leg
#030121



Low Sill Equal Leg
#030025



5/16" Glazing Option



IG Glazing Option

Note:
Additional Glazing Beads Available For 1/4", 5/16", 7/16", 1/2", 5/8" & 3/4".
Contact Factory For Details.

Frame Options - 3 1/4"

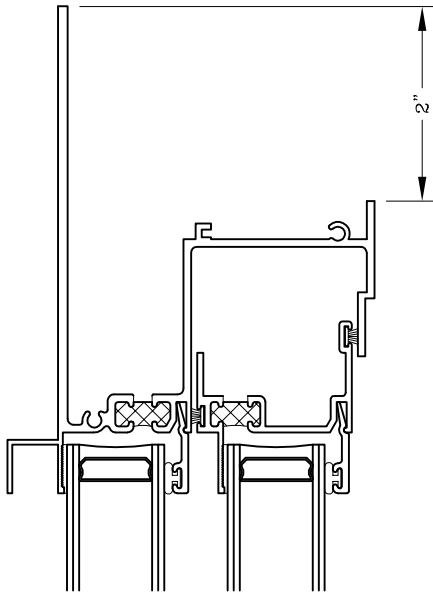


Series: 0300

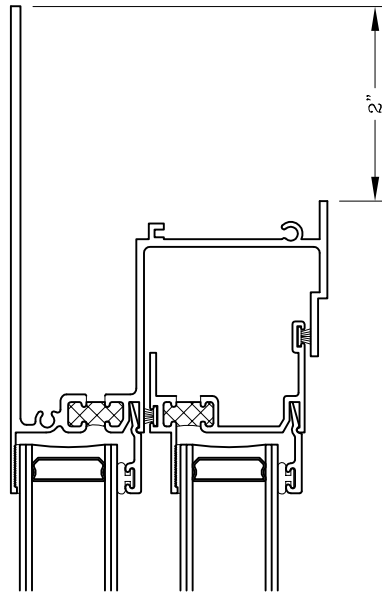
Manufacturing Code: 0317

Drawing 1/2 Scale - For Custom Size Drawing Contact Graham

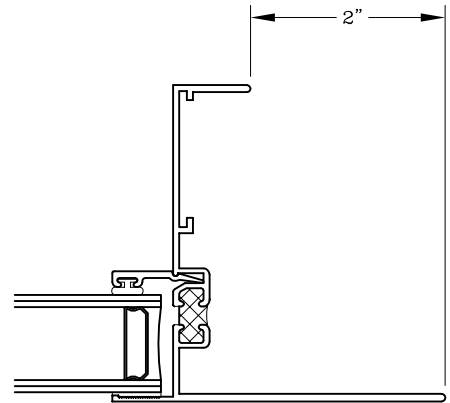
Note: Sealant Not Shown On Details. Consult Technical Services At Factory For Sealing Procedures.



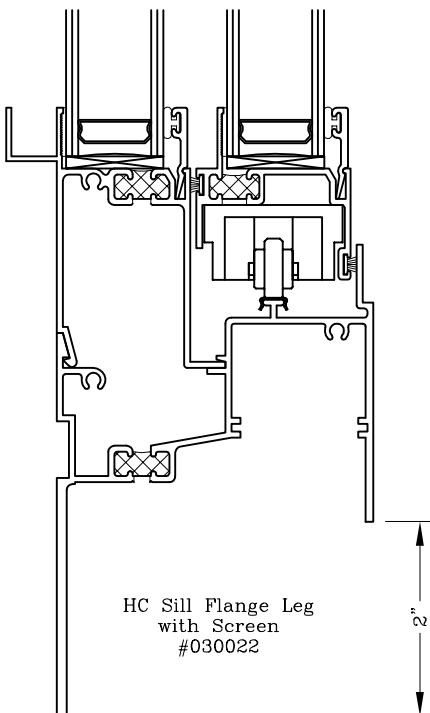
Flange Leg Head
w/ Screen
#030015



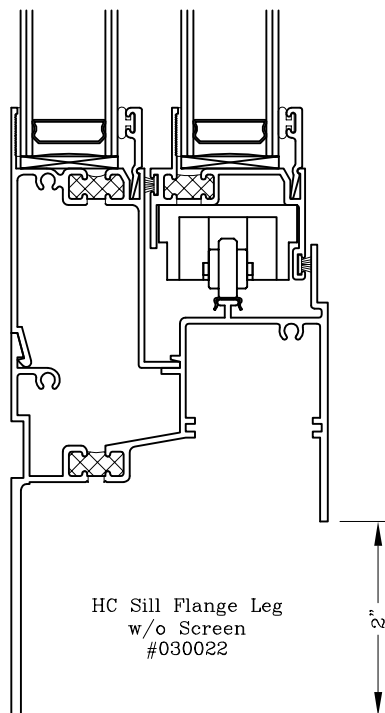
Flange Leg Head
w/o Screen
#030012



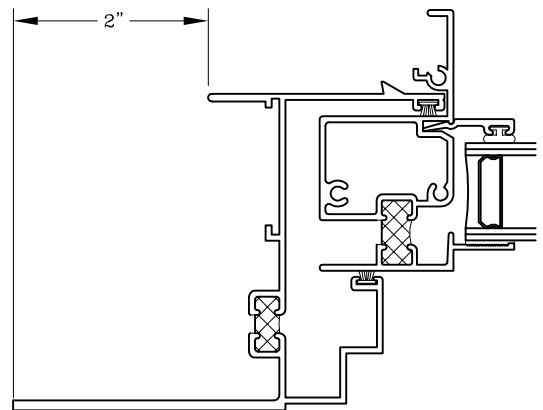
Non Operating Vent
Flange Frame
#200013



HC Sill Flange Leg
with Screen
#030022



HC Sill Flange Leg
w/o Screen
#030022



Operating Vent
Flange Frame
#030033

Frame Options - 3 1/4" Glazing Options



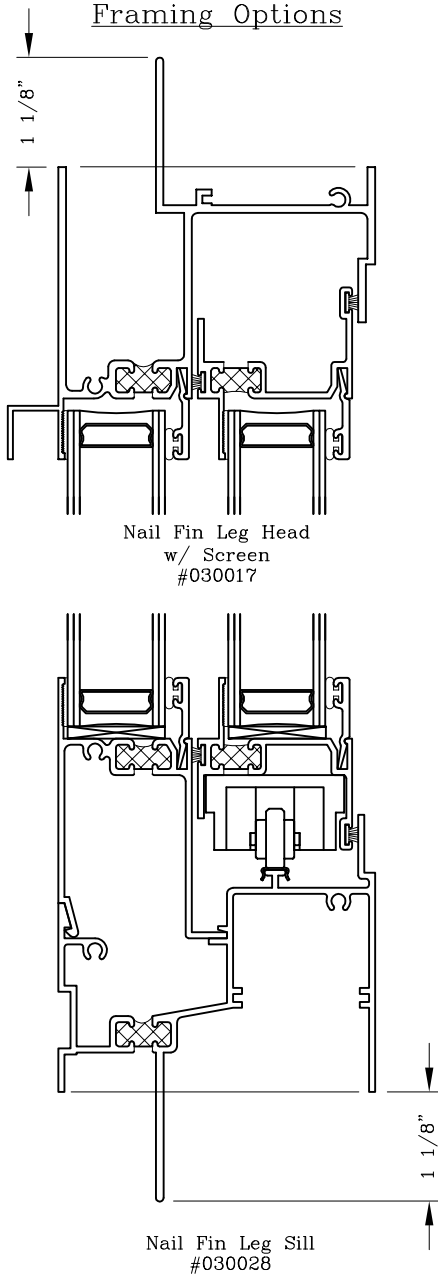
Series: 0300

Manufacturing Code: 0318

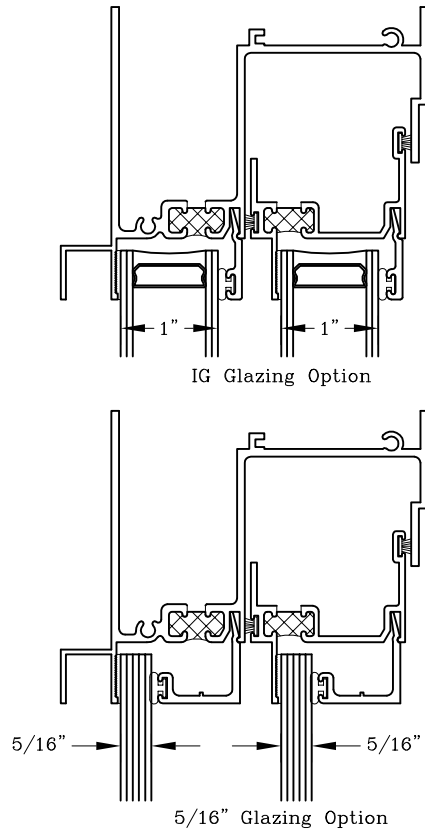
Drawing 1/2 Scale - For Custom Size Drawing Contact Graham

Note: Sealant Not Shown On Details. Consult Technical Services At Factory For Sealing Procedures.

Framing Options



Glazing Options



Note:
Additional Glazing Beads Available For
1/4", 5/16", 7/16", 1/2", 5/8" & 3/4".
Contact Factory For Details.

