

Frame Options – 3 1/4"

Glazing Options



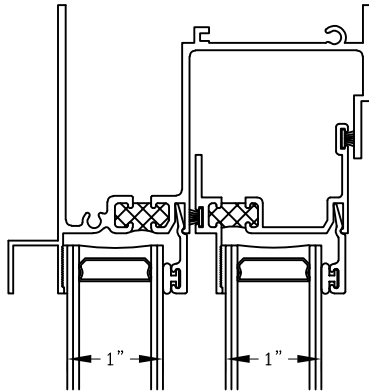
Series: 0300

Manufacturing Code: 0316

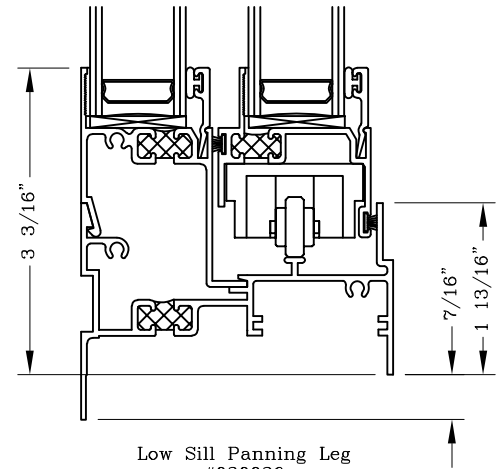
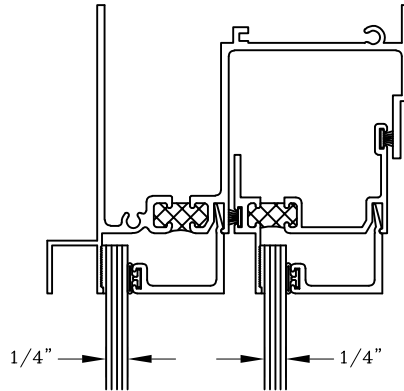
Drawing 1/2 Scale – For Custom Size Drawing Contact Graham

Note: Sealant Not Shown On Details. Refer To General Installation Instructions.

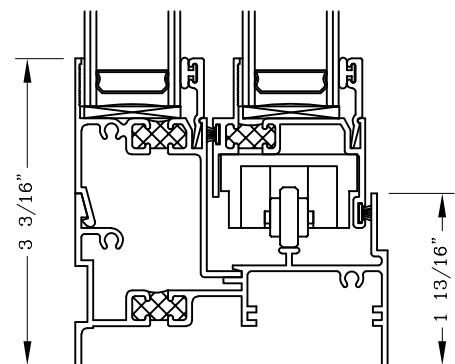
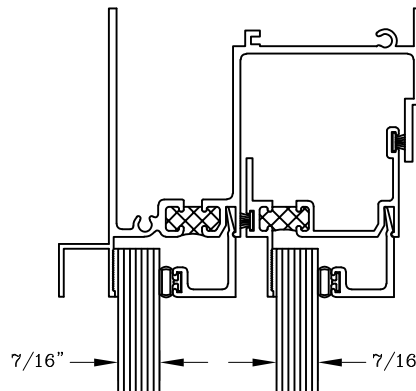
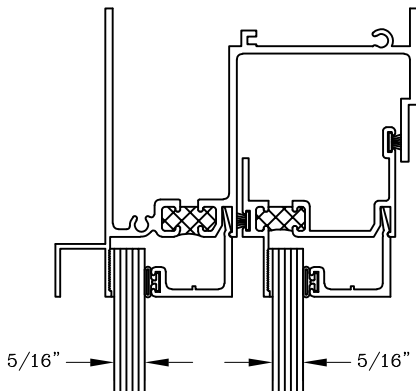
Note:
Additional Glazing Beads Available For
1/4", 5/16", 7/16", 1/2", 5/8" & 3/4".
Contact Factory For Details.



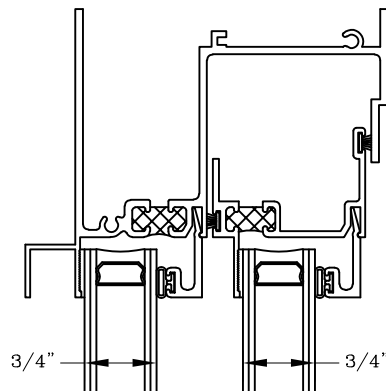
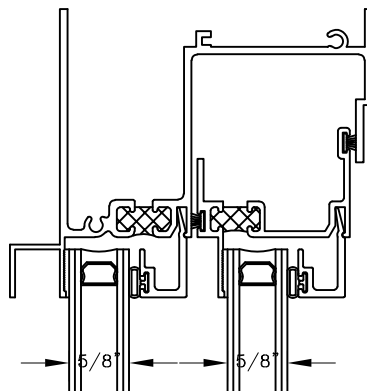
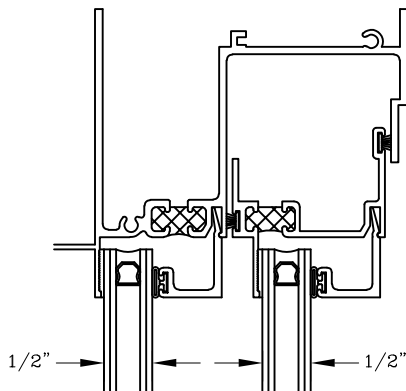
IG Glazing Option



Low Sill Panning Leg
#030026



Low Sill Equal Leg
#030025



Graham Architectural Products reserves the right to change, add, cancel, remove or otherwise modify the details illustrated without prior notice.

1551 Mt. Rose Avenue, York, Pennsylvania 17403-2909 717.849.8100 Toll Free: 800/755-6274

Web Site: www.grahamwindows.com

0123 – 03.16