

Grid Frames

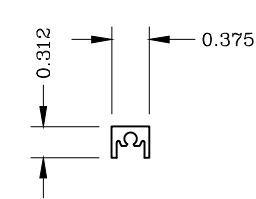
Standard Muntin Grid Frames

Series: Accessories Manufacturing Code: GF01

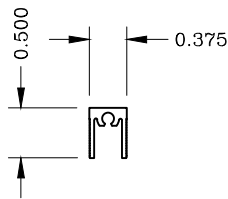
Drawing 1/2 Scale – For Custom Size Drawing Contact Graham

Note: Sealant Not Shown On Details. Consult Technical Services At Factory For Sealing Procedures.

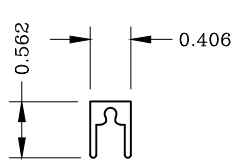
Note: Grid Frame Not Available On All Products



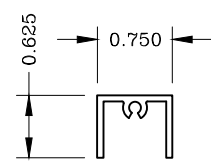
Eq. Leg Frame
340419



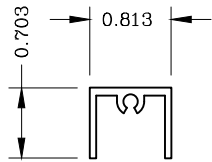
Frame Filler
990290
(For Series 3400)



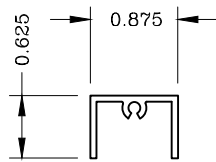
Frame Filler
990427



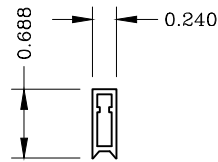
Frame Filler
999412



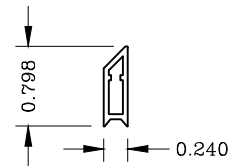
Frame Filler
990343



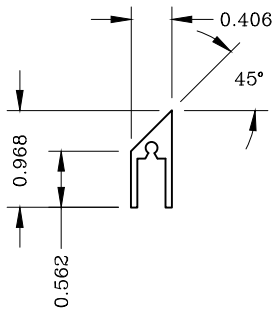
Frame Filler
999402



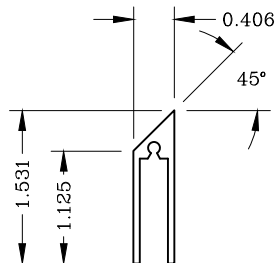
Frame Filler
990899
(Use Only With
990315
Or 990871 Grid)



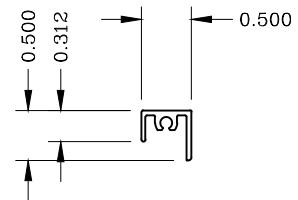
Frame Filler
990397
(Use Only With
990315
Or 990871 Grid)



45° Beveled Filler
990763



45° Beveled Filler
990854



Frame Filler
990487
(For Series 3400)

Muntin Grids – Standard

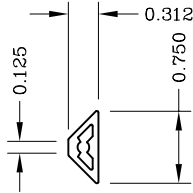


Series: Accessories Manufacturing Code: GR01

Drawing 1/2 Scale – For Custom Size Drawing Contact Graham

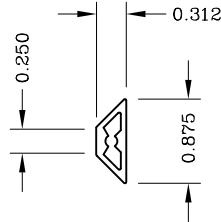
Note: Sealant Not Shown On Details. Consult Technical Services At Factory For Sealing Procedures.

Applied Grid Options

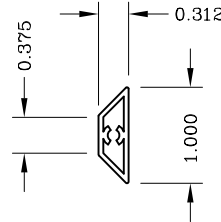


Trapezoidal
990304/990315

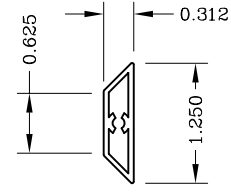
[Use 990315 With
990388 Or 990899
Grid Frame]



Trapezoidal
990326

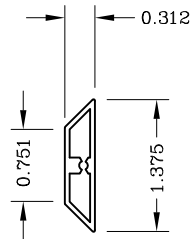


Trapezoidal
990882



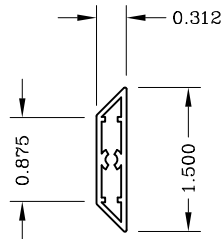
Trapezoidal
990853/990871

[Use 990871 With
990388 Or 990899
Grid Frame]

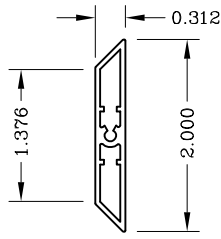


Trapezoidal
990880

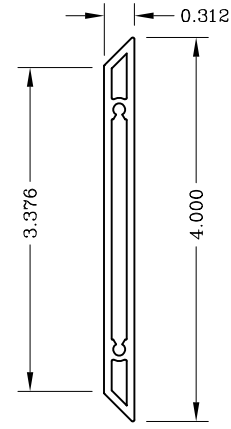
[Use Only With
990388 Or 990899
Grid Frame]



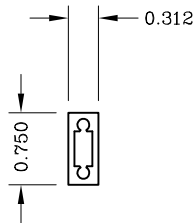
Trapezoidal
990363



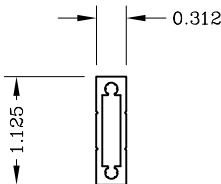
Trapezoidal
990306



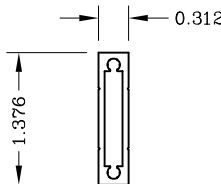
Trapezoidal
990333



Tubular
990312



Tubular
990310



Tubular
990314

Muntin Grids – Standard

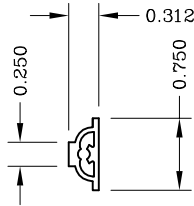


Series: Accessories Manufacturing Code: GR02

Drawing 1/2 Scale – For Custom Size Drawing Contact Graham

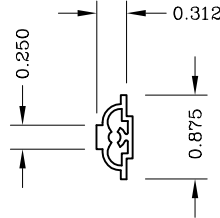
Note: Sealant Not Shown On Details. Consult Technical Services At Factory For Sealing Procedures.

Applied Grid Options

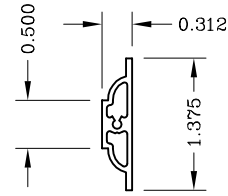


Profile
990394/990392

[Use 990392 With
990899 Or 990388
Grid Frame]

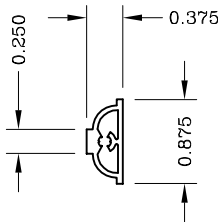


Profile
990302

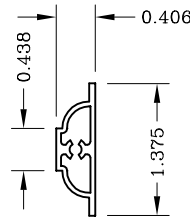


Profile
990393/990391

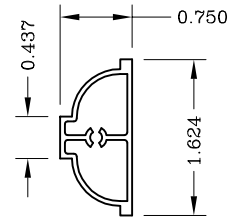
[Use 990391 With
990899 Or 990388
Grid Frame]



Profile
990300

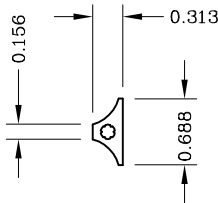


Profile
990299



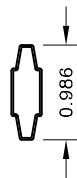
Profile
990301

[Use Only With
990343, 999412 Or
999402
Grid Frame]



Concaved
990364

Muntin In Glass



Contoured
8mm x 25mm
950140

Muntin Grids – 6700 Series

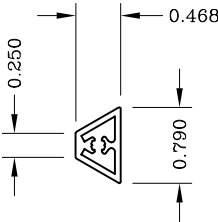


Series: Accessories Manufacturing Code: GR03

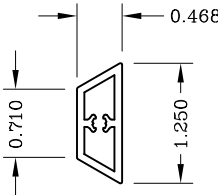
Drawing 1/2 Scale – For Custom Size Drawing Contact Graham

Note: Sealant Not Shown On Details. Consult Technical Services At Factory For Sealing Procedures.

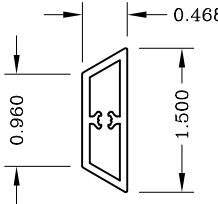
Applied Grid Options



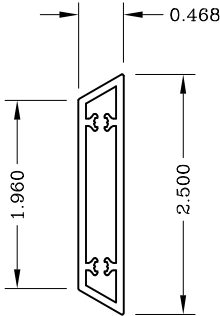
Trapezoidal
670090



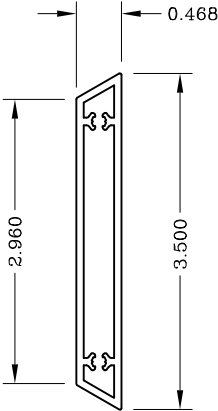
Trapezoidal
670095



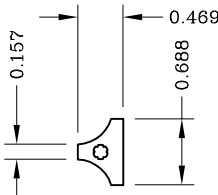
Trapezoidal
670094



Trapezoidal
670091



Trapezoidal
670092



Concave
670093

Muntin Grids – Historic Applications

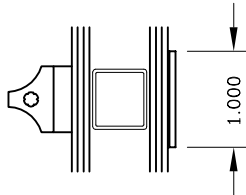


Series: Accessories Manufacturing Code: GR04

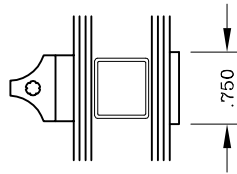
Drawing 1/2 Scale – For Custom Size Drawing Contact Graham

Note: Sealant Not Shown On Details. Consult Technical Services At Factory For Sealing Procedures.

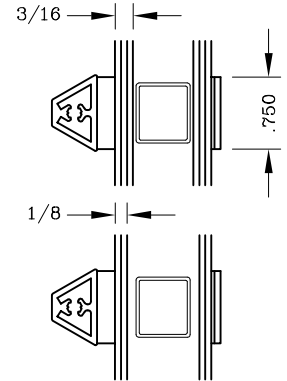
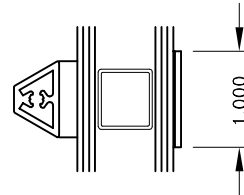
Model 6700



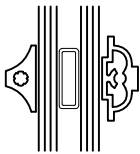
Triple
With Concave
1" IG Unit



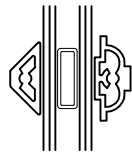
Triple
With Trap
1" IG Unit



Model 2575H & 2275H

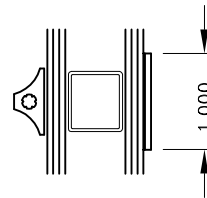


Triple With
Concave Exterior
Profile Interior
5/8" IG Unit

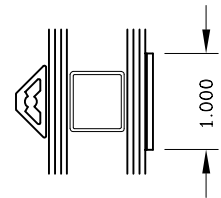


Triple With
Trap Exterior
Profile Interior
1/2" IG Unit
1/8" Glass Min.

Model 2575H, 2275H, 1450H, & 1550H

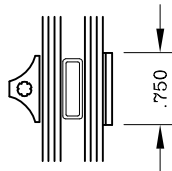


Triple
With Concave
1" IG Unit

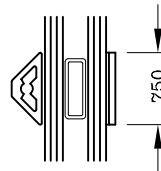


Triple
With Trap
1" IG Unit

Model 2075H



Triple
With Concave
5/8" IG Unit



Triple
With Trap
5/8" IG Unit

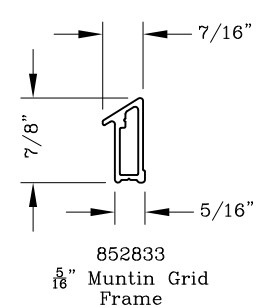
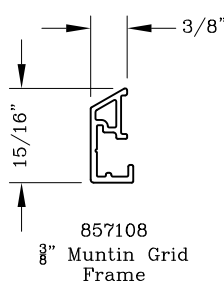
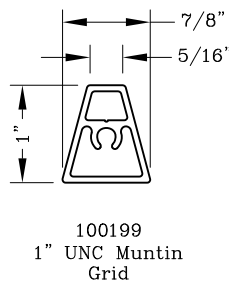
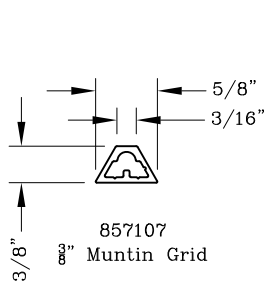
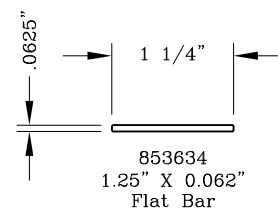
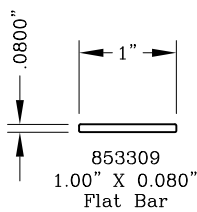
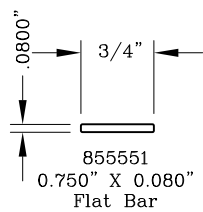
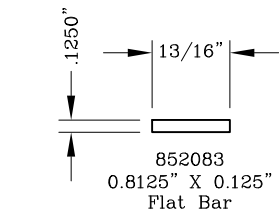
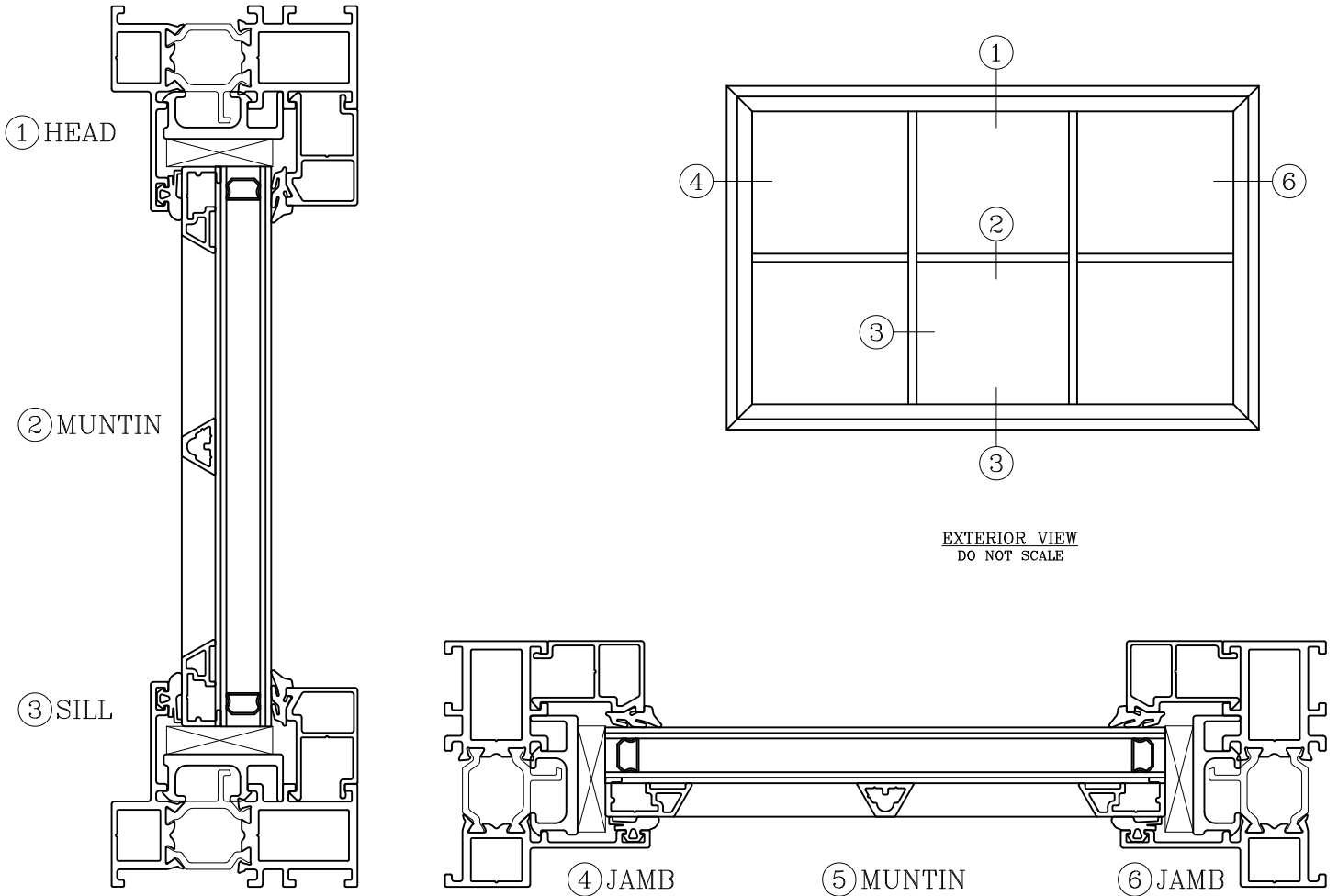
Muntins



Series: Accessories Manufacturing Code: GT-GR01

Drawing 1/2 Scale - For Custom Size Drawing Contact Graham

Note: Sealant Not Shown On Details. Consult Technical Services At Factory For Sealing Procedures.



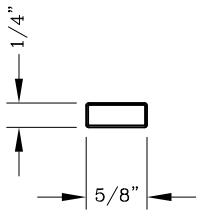
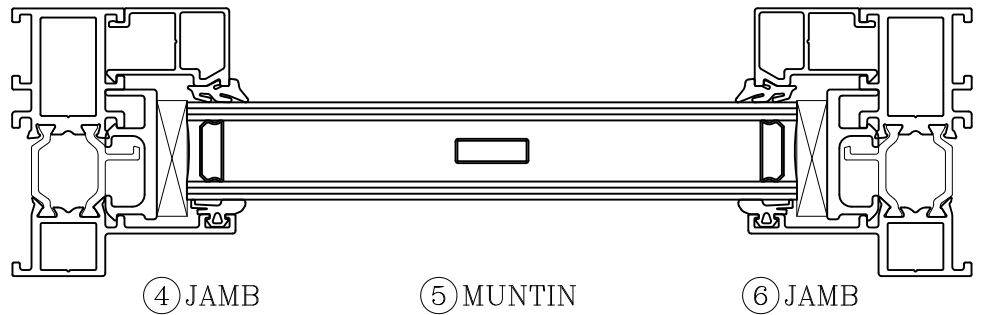
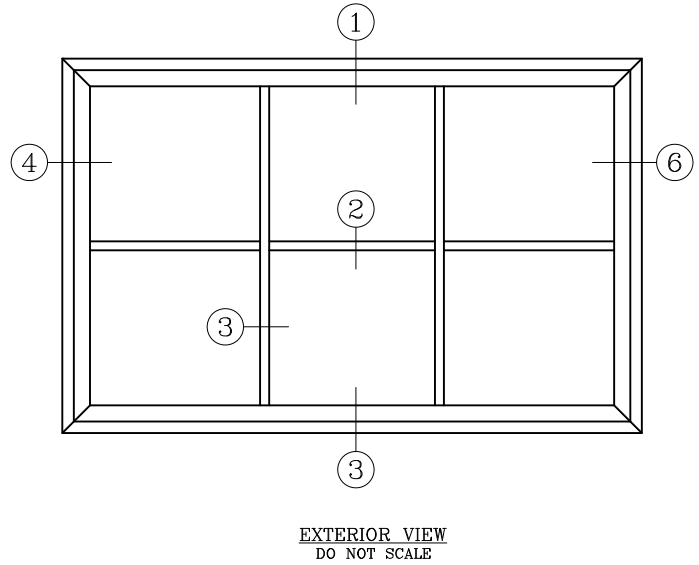
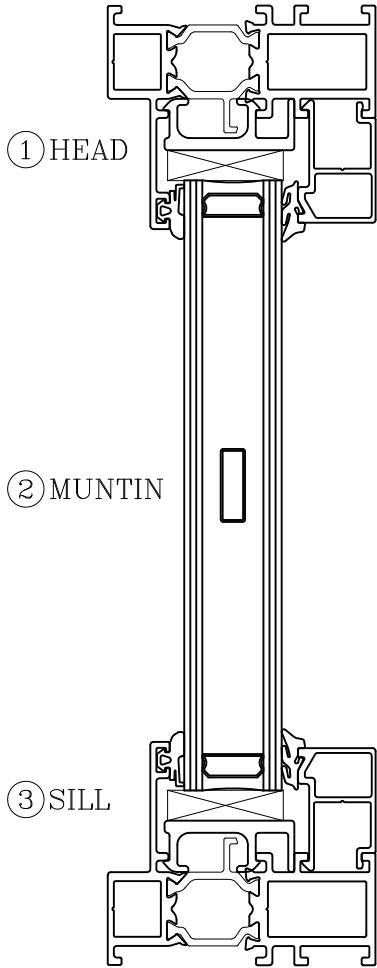
Muntin In Glass



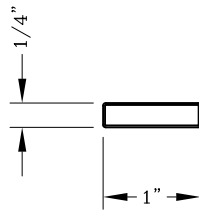
Series: Accessories Manufacturing Code: GT-GR02

Drawing 1/2 Scale - For Custom Size Drawing Contact Graham

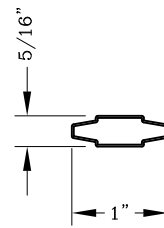
Note: Sealant Not Shown On Details. Consult Technical Services At Factory For Sealing Procedures.



950050
5/8" Muntin In Glass



950062
1" Muntin In Glass



950140
1" Profile Muntin In Glass