

# B2000 SERIES DATA SHEET

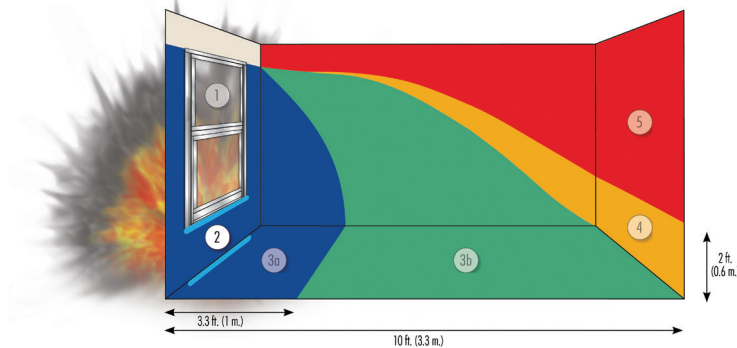
**SHOCK TUBE TESTED • THIRD PARTY EVALUATION • MANUFACTURED IN THE USA**

WINDOW TYPE	FRAME DEPTH (inches)	SERIES	DESIGNED BLAST PRESSURE (psi)	POSITIVE PHASE IMPULSE (psi-msec)	WINDOW SIZE (inches)	GLAZING COMPOSITION (inches)	TESTING & CERTIFICATIONS			
							Test Methods	Qualified	Certification	
Aluminum Side Load Single Hung	Standard	3 1/4"	B2000	4.4	34.3	48 x 66	1/4" annealed, 1/2" as, 1/4" lami	ASTM F 1642	ASTM "Minimal Hazard" GSA Condition 2 UFC 4-010-01	Independent Test Report
	Nail Fin			6.6	46	45 1/2 x 63 3/4	3/16" annealed, 17/32" as, 1/4" lami	ASTM F 1642	ASTM "Minimal Hazard" GSA Condition 2 UFC 4-010-01	Independent Test Report

Products comply with Unified Facilities Criteria UFC 4-010-01; DoD Minimum Antiterrorism Standards for Buildings

## STANDARD FEATURES

- Single Hung Side-Load windows for blast mitigation
- Provides GSA level C protection against explosive attacks
- Meets DoD UFC 4-010-01 criteria
- Trim & clip or receptor anchoring system
- 1" insulating glass construction using industry standard laminated technology
- Utilizes standard locking hardware
- Mulls to 3 1/4" frame fixed and operable products
- Sash easily removes from frame for maintenance & cleaning
- Removable take-out clips to prevent unauthorized sash removal
- Full-length extruded lift handles



Series B2000 Meets GSA Condition 2

## Window series: B2000 Single Hung (Side-Load) — General Specifications & Details

- Nominal Frame/Sill Wall Thickness: 0.062/0.094"
- Test Size: 48" x 66"
- Glazing: 1/4" annealed, 1/2" spacer, 1/4" laminated
- Mullins: Grids between lites of IG unit or exterior-applied
- Radius tops and arches available with mullied fixed units
- Maximum Sash Weight: Standard balancing of both sash to 80 lbs. Optional heavy-duty system to 120 lbs. Depends on height-to-width ratio (please contact factory)

- Finish Options:
  - AAMA 2603 — Standard acrylic or polyester
  - AAMA 2604 — 2 coat 50% fluoropolymer
  - AAMA 2605 — 2 coat fluoropolymer 70% kynar
  - Powder Coat
  - Anodized
- Hardware: White bronze sweep lock with keeper
- Accessories:
  - Frame Family: 3 1/4"
  - Mullions: Stacking: Integral & fixed-stack mull
  - Side: 3-piece mull
  - Panning: Available
  - Trims: Available
  - Receptor Systems: Available
- Exceptions: Call Graham sales rep or see website for more information

Our products are tested to the standards of and certified by the American Architectural Manufacturer's Association and the National Fenestration Rating Council.



# Blast Mitigation – 3 1/4” Single Hung With Screen Track

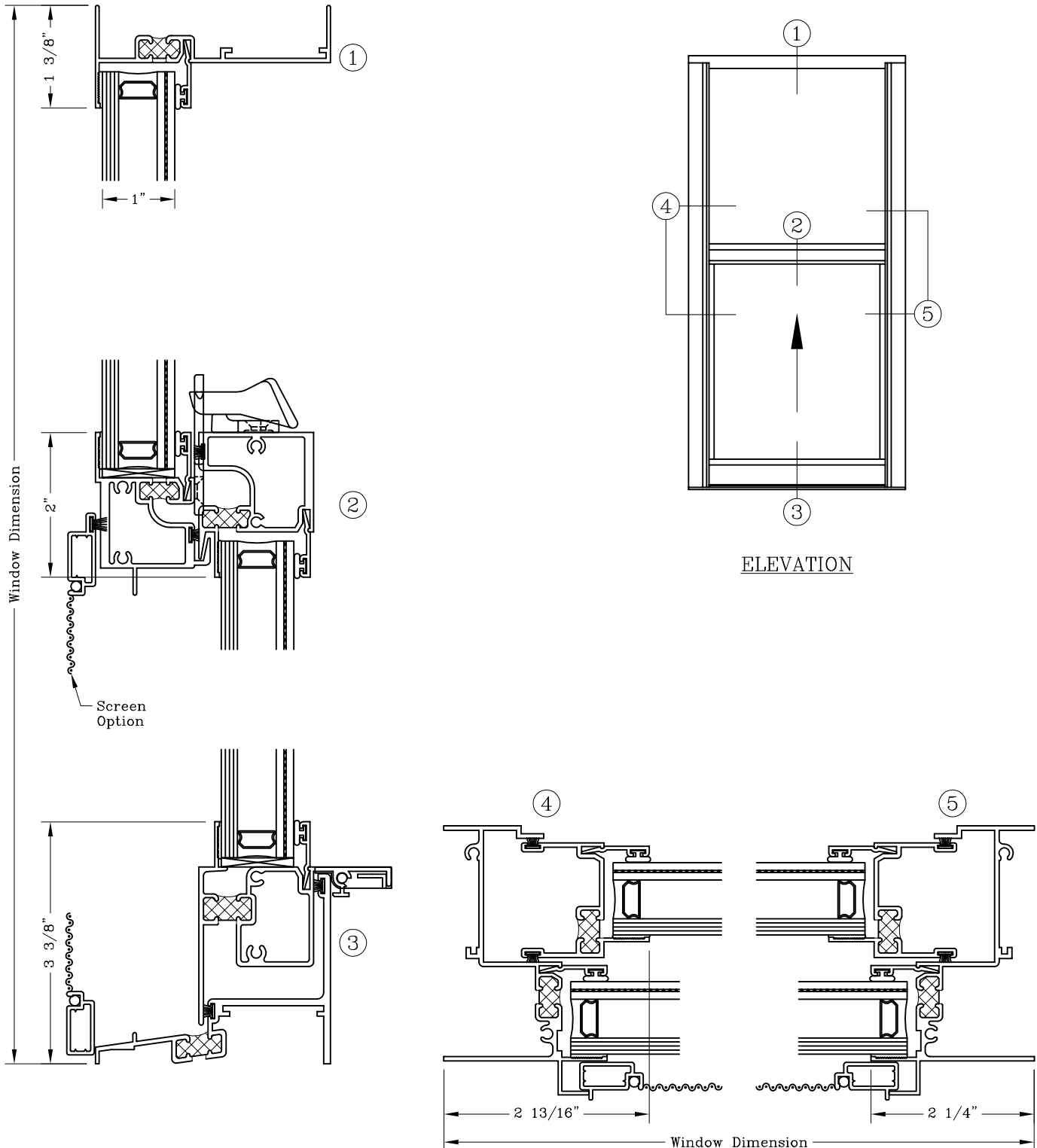


Series: B2000

Manufacturing Code: B2001

Drawing 1/2 Scale – For Custom Size Drawing Contact Graham

Note: Sealant Not Shown On Details. Consult Technical Services At Factory For Sealing Procedures.  
For Blast Pressures And GSA Levels Contact Factory



# Blast Mitigation – 3 1/4” Single Hung With Nail Fin With Screen Track

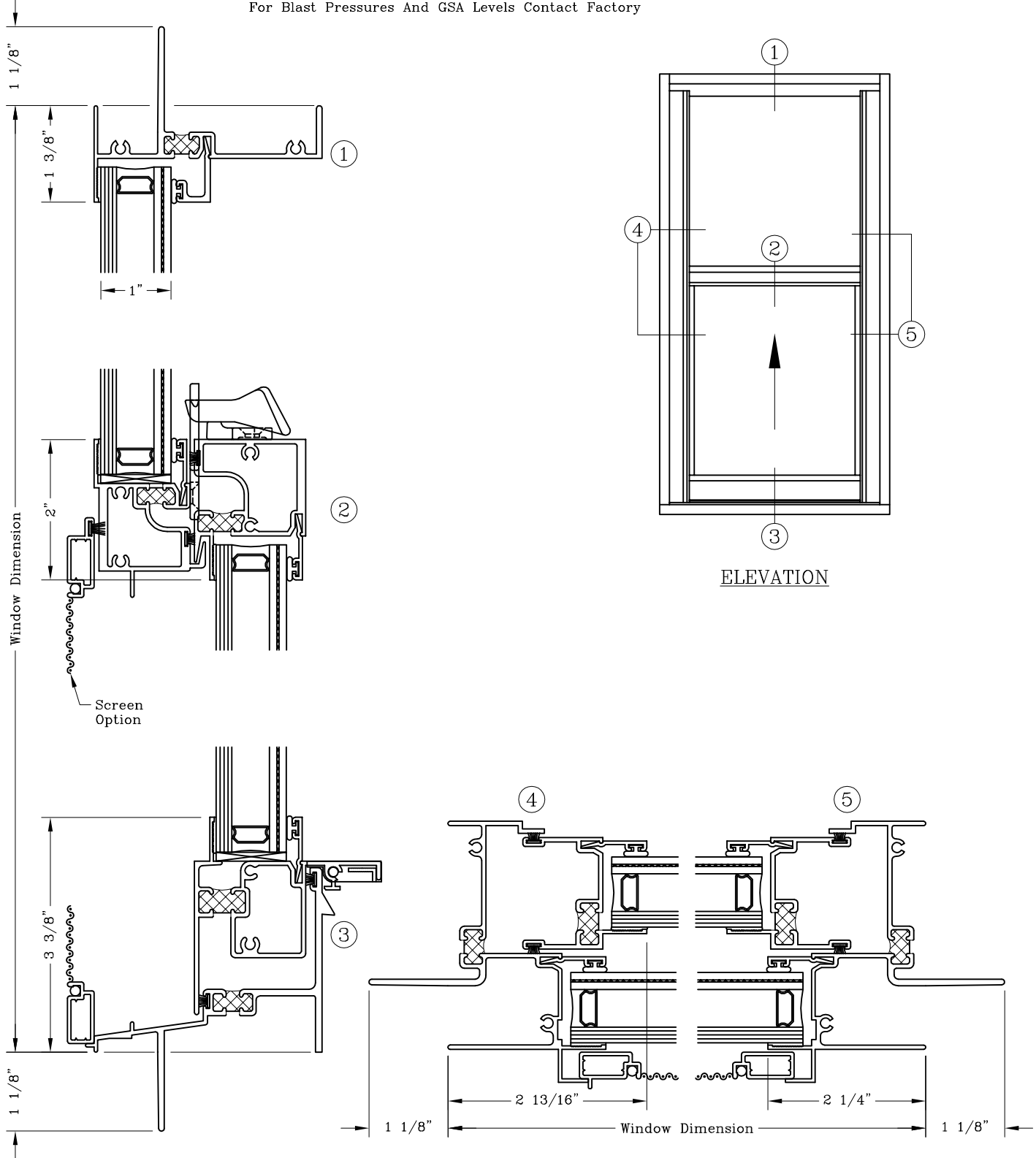


Series: B2000

Manufacturing Code: B2002

Drawing 1/2 Scale – For Custom Size Drawing Contact Graham

Note: Sealant Not Shown On Details. Consult Technical Services At Factory For Sealing Procedures.  
For Blast Pressures And GSA Levels Contact Factory



# Blast Mitigation – 3 1/4” Single Hung w/o Screen Track



Series: B2000

Manufacturing Code: B2003

Drawing 1/2 Scale – For Custom Size Drawing Contact Graham

Note: Sealant Not Shown On Details. Consult Technical Services At Factory For Sealing Procedures.  
For Blast Pressures And GSA Levels Contact Factory

