

B6800HP SERIES DATA SHEET

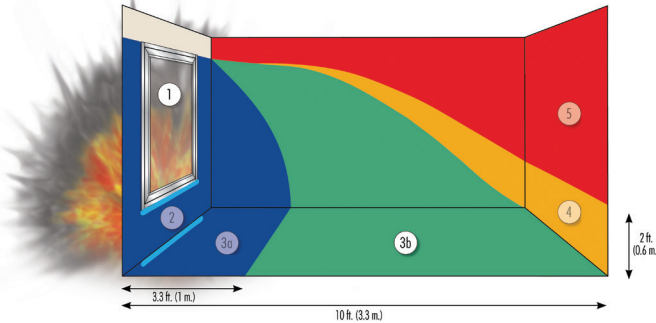
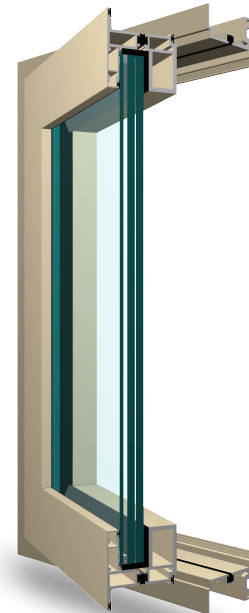
SHOCK TUBE TESTED • THIRD PARTY EVALUATION • MANUFACTURED IN THE USA

WINDOW TYPE	FRAME DEPTH (inches)	SERIES	DESIGNED BLAST PRESSURE (psi)	POSITIVE PHASE IMPULSE (psi-msec)	WINDOW SIZE (inches)	GLAZING COMPOSITION (inches)	TESTING & CERTIFICATIONS		
							Test Methods	Qualified	Certification
Aluminum Casement/Projected	3½"	B6800HP	10.8	96	49¾ x 67¾	¼ annealed, ⅜ as, ⅜ lami	ASTM F 1642	ASTM "Low Hazard" GSA Condition 3b UFC 4-010-01	Independent Test Report
			23.5	100	49¾ x 67¾	⅜ TTG, ⅜ as, ⅜ lami	ASTM F 1642	ASTM "Low Hazard" GSA Condition 3b UFC 4-010-01	Independent Test Report
10.4			91	49¾ x 67¾	¼ TTG, ⅜ as, ⅜ lami	ASTM F 1642	ASTM "No Break" Hazard GSA Condition 1 UFC 4-010-01	Independent Test Report	
24.2			116	49¾ x 67¾	⅜ TTG, ⅜ as, ⅜ lami	ASTM F 1642	ASTM "No Break" Hazard GSA Condition 1 UFC 4-010-01	Independent Test Report	
Aluminum Fixed									

Products comply with Unified Facilities Criteria UFC 4-010-01; DoD Minimum Antiterrorism Standards for Buildings

STANDARD FEATURES

- Casement/Projected/Fixed windows for blast mitigation
- Provides GSA level D or higher protection against explosive attacks
- Meets DoD UFC 4-010-01 criteria
- Trim & clip anchoring system
- 1¾" insulating glass construction using industry standard laminated technology
- Sloped exterior glazing leg simulates putty-glazed profile (available option)
- Integral and fixed-stack mull for minimal sightlines
- Mulls to 3½" frame fixed and operable products
- Flush design of vent and frame for aesthetic appeal



Series B6800HP Fixed Meets GSA Condition 1; Series B6800HP Casement/Projected Meets GSA Condition 3b

Window series: B6800HP Casement/Projected/Fixed — General Specifications & Details

- Nominal Frame/Sill Wall Thickness: 0.125"
- Test Size: 50" x 68"
- Glazing:
 - ¼" annealed, ⅜" spacer, ⅜" laminated
 - ⅜" annealed, ⅜" spacer, ⅜" laminated
- Muntins: Applied grids available
- Finish Options:
 - AAMA 2603 — Standard acrylic or polyester
 - AAMA 2604 — 2 coat 50% fluoropolymer
 - AAMA 2605 — 2 coat fluoropolymer 70% kynar
 - Powder Coat
 - Anodized
- Hardware:
 - Casement/Projected:
 - Hinges: 4-bar stainless steel
 - Lock/Latch: White bronze standard
- Accessories:
 - Frame Family: 3½"
 - Mullions: "T" mullion or tube mullion
 - Trims: Trim & clip anchoring
- Exceptions: Call Graham sales rep or see website for more information

Our products are tested to the standards of and certified by the American Architectural Manufacturer's Association and the National Fenestration Rating Council.



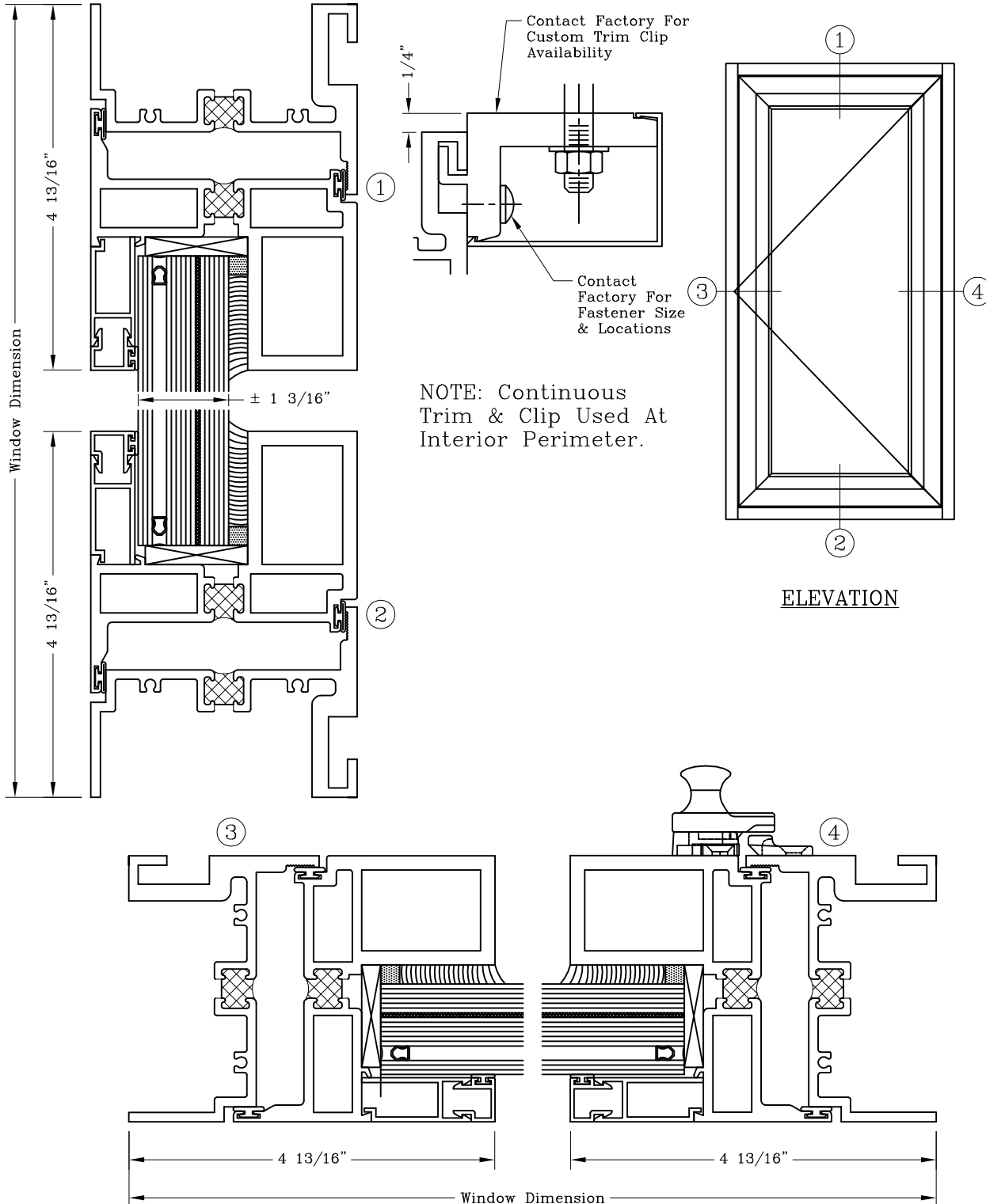
Blast Mitigation – 3 1/2” Casement Outswing



Series: B6800 HP Manufacturing Code: B6803

Drawing 1/2 Scale – For Custom Size Drawing Contact Graham

Note: Sealant Not Shown On Details. Consult Technical Services At Factory For Sealing Procedures.
For Blast Pressures And GSA Levels Contact Factory



Blast Mitigation – 3 1/2” Fixed



Series: B6800 HP Manufacturing Code: B6804

Drawing 1/2 Scale – For Custom Size Drawing Contact Graham

Note: Sealant Not Shown On Details. Consult Technical Services At Factory For Sealing Procedures.
For Blast Pressures And GSA Levels Contact Factory

