

B6800 SERIES DATA SHEET

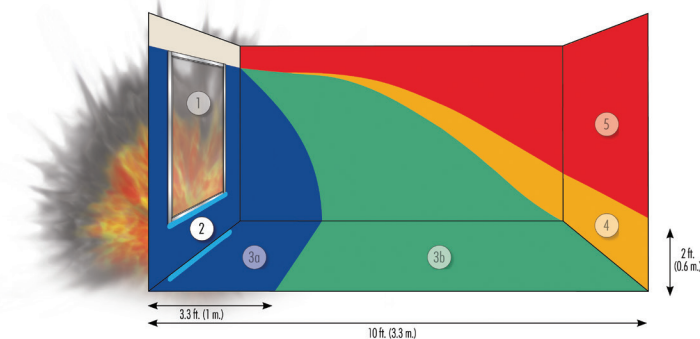
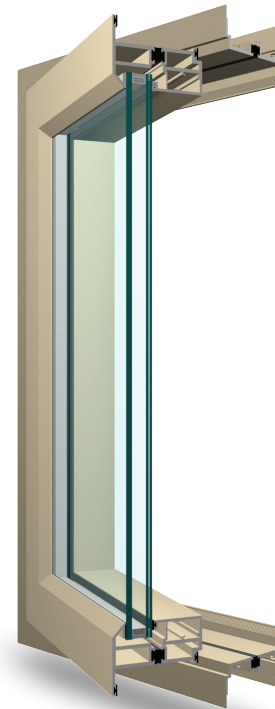
SHOCK TUBE TESTED • THIRD PARTY EVALUATION • MANUFACTURED IN THE USA

WINDOW TYPE	FRAME DEPTH (inches)	SERIES	DESIGNED BLAST PRESSURE (psi)	POSITIVE PHASE IMPULSE (psi-msec)	WINDOW SIZE (inches)	GLAZING COMPOSITION (inches)	TESTING & CERTIFICATIONS		
							Test Methods	Qualified	Certification
Aluminum Casement/Projected	3½	B6800	6	42	49¾ x 67¾	¼ annealed, ½ as, ¼ lami	ASTM F 1642	ASTM "Minimal Hazard" GSA Condition 2 UFC 4-010-01	Independent Test Report
Aluminum Fixed			5.8	41	49¾ x 67¾	¼ annealed, ½ as, ¼ lami	ASTM F 1642	ASTM "Minimal Hazard" GSA Condition 2 UFC 4-010-01	Independent Test Report

Products comply with Unified Facilities Criteria UFC 4-010-01; DoD Minimum Antiterrorism Standards for Buildings

STANDARD FEATURES

- Casement/Projected/Fixed windows for blast mitigation
- Provides GSA level C protection against explosive attacks
- Meets DoD UFC 4-010-01 criteria
- Trim & clip or receptor anchoring system
- 1" insulating glass construction using industry standard laminated technology
- Sloped exterior glazing leg simulates putty-glazed profile
- Integral and fixed-stack mull for minimal sightlines
- Mulls to 3½" frame fixed and operable products
- Flush design of vent and frame for aesthetic appeal



Series B6800 Meets GSA Condition 2

Window series: B6800 Casement/Projected/Fixed — General Specifications & Details

- Nominal Frame/Sill Wall Thickness: 0.125"
- Test Size:
50" x 68"
- Glazing:
¼" annealed, ½" spacer, ¼" laminated
- Muntins: Between-the-glass grids, or applied grids available

- Finish Options:
AAMA 2603 — Standard acrylic or polyester
AAMA 2604 — 2 coat 50% fluoropolymer
AAMA 2605 — 2 coat fluoropolymer 70% kynar
Powder Coat
Anodized
- Hardware:
Casement/Projected:
Hinges: 4-bar stainless steel
Lock/Latch: White bronze standard
- Accessories:
Frame Family: 3½"
Mullions: Stacking: Integral & fixed-stack mull
Side: 3-piece mull
Panning: Available
Trims: Available
Receptor Systems: Available
- Exceptions: Call Graham sales rep or see website for more information

Our products are tested to the standards of and certified by the American Architectural Manufacturer's Association and the National Fenestration Rating Council.



Check website for most current information including other installation and hardware options: www.grahamwindows.com
 1551 Mt. Rose Avenue, York, Pennsylvania 17403-2909 (800) 755-6274 (717) 849-8100

Blast Mitigation – 3 1/2” Casement Outswing

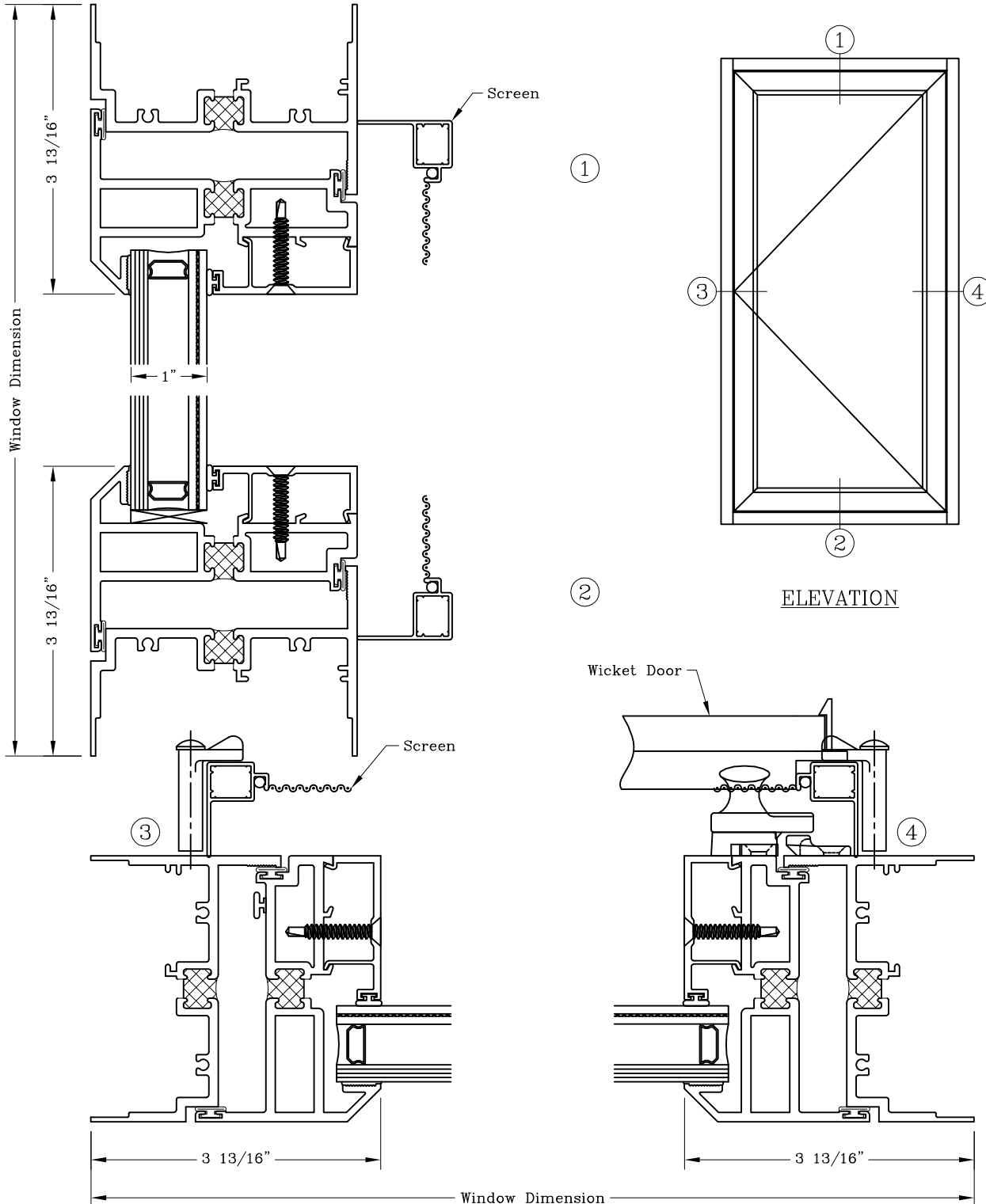


Series: B6800

Manufacturing Code: B6805

Drawing 1/2 Scale – For Custom Size Drawing Contact Graham

Note: Sealant Not Shown On Details. Consult Technical Services At Factory For Sealing Procedures.
For Other Blast Pressures And GSA Levels Contact Factory



Blast Mitigation – 3 1/2” Fixed



Series: B6800

Manufacturing Code: B6806

Drawing 1/2 Scale – For Custom Size Drawing Contact Graham

Note: Sealant Not Shown On Details. Consult Technical Services At Factory For Sealing Procedures.
For Blast Pressures And GSA Levels Contact Factory

