

B7600 Blast Entry System Single Panel & Subframe

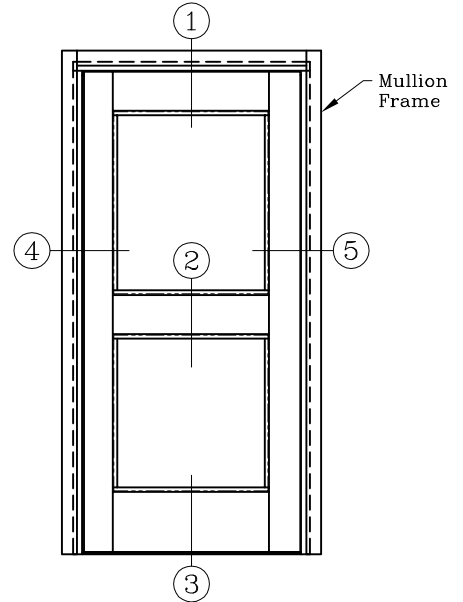
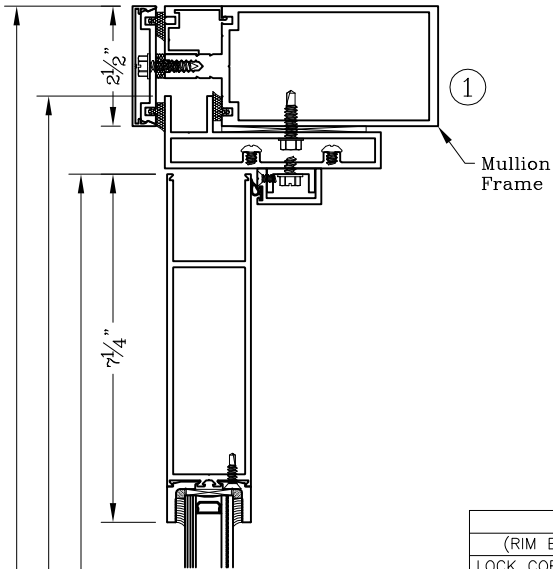


Series: B7600

Manufacturing Code: B7601

Drawing 1/2 Scale – For Custom Size Drawing Contact Graham

Note: Sealant Not Shown On Details. Consult Technical Services At Factory For Sealing Procedures.



HARDWARE

RIM PANIC DEVICE / TRIM
(RIM EXIT DEVICE #2103 X C1703A 3'-0")
LOCK CORE - (ACTIVE LEAF) (CYLINDER RIM FOR EXIT DEVICE)
CONTINUOUS HINGE 84" DOOR PANEL (CONTINUOUS HINGE #A110HDC083)
SURFACE MOUNTED CLOSER (DOOR CLOSER #4550 EDA X ALUM)
GRAHAM THRESHOLD

Note: Panel Widths 36", 42" and 48".

