

Projected - 2 1/2"

Narrow Sightline

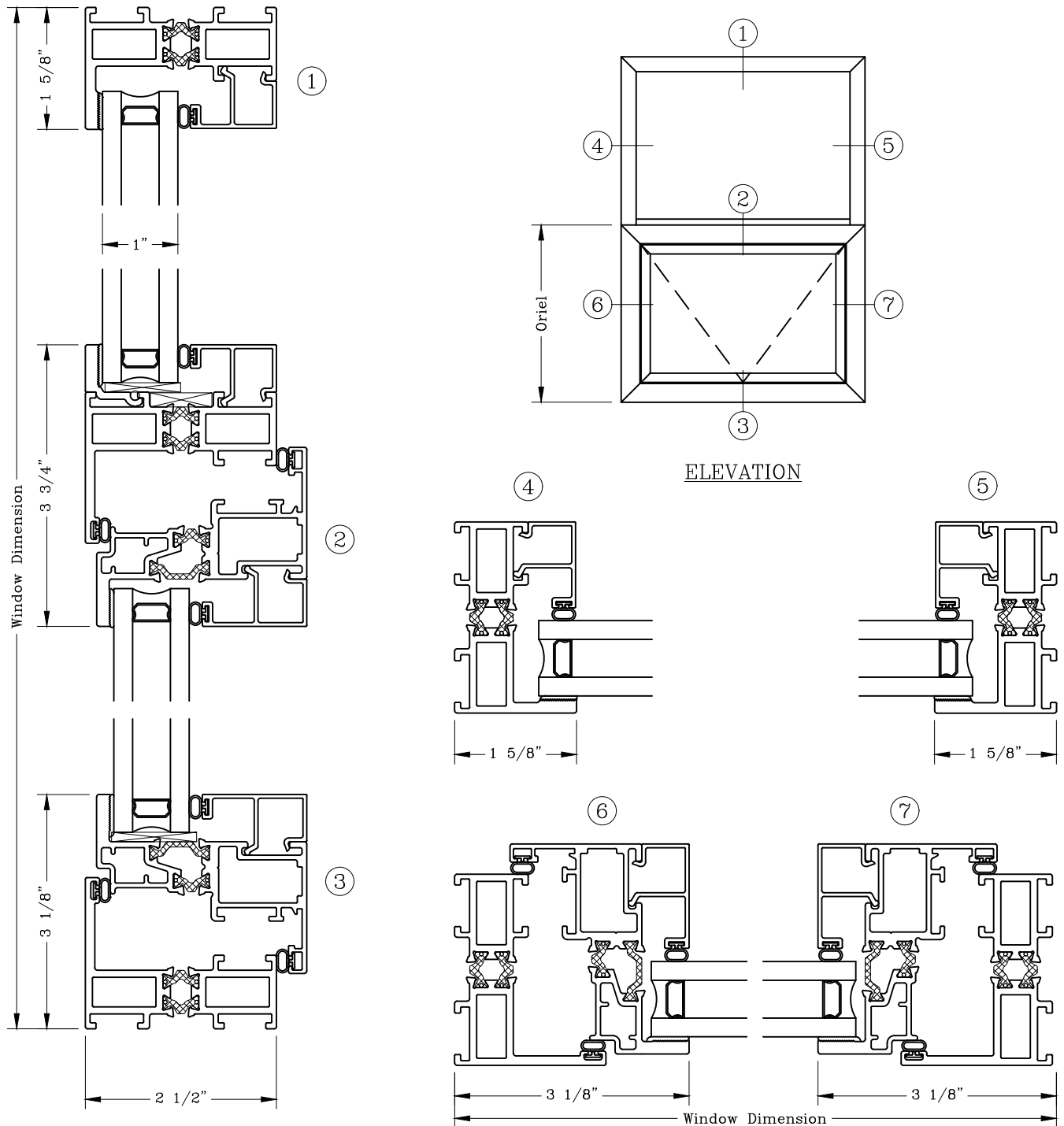
Fixed Over Inswing Projected

Series: GS6600

Manufacturing Code: GS6622F

Drawing 1/2 Scale - For Custom Size Drawing Contact Graham

Note: Sealant Not Shown On Details. Refer To General Installation Instructions.



Note: Dashed Lines Represent Inswing Vented Units Solid Lines Represent Outswing Vented Units; Lines Converge At Hinge Side Of Vent