

Exterior Profile Options

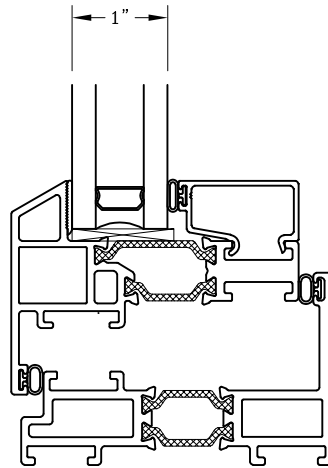
3 1/4"

Flush Face

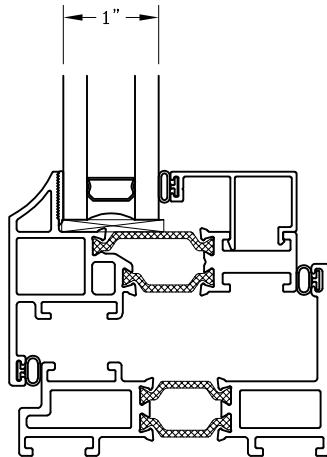
Series: GT6700FF Manufacturing Code: GT6713FFB

Drawing 1/2 Scale - For Custom Size Drawing Contact Graham

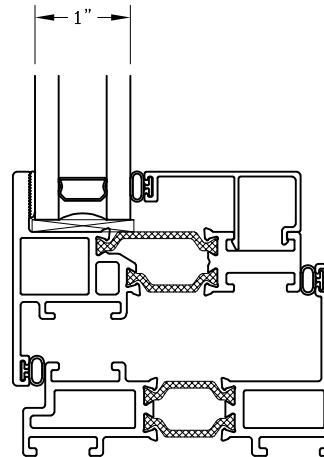
Note: Sealant Not Shown On Details. Refer To General Installation Instructions.



GT6700FFB
Beveled



GT6700FFC
Concave



GT6700FFF
Flat

Note: Dashed Lines Represent Inswing Vented Units Solid Lines Represent
Outswing Vented Units; Lines Converge At Hinge Side Of Vent

Graham Architectural Products reserves the right to change, add, cancel, remove or otherwise modify the details illustrated without prior notice.

1551 Mt. Rose Avenue, York, Pennsylvania 17403-2909 717.849.8100 Toll Free: 800/755-6274

0223 - GT67.13FFB

Web Site: www.grahamwindows.com