

A photograph of a historic brick building with a prominent corner tower. The tower features ornate architectural details, including a decorative cornice and a large, multi-paned window. The building's facade is made of red brick with light-colored stone or concrete accents around the windows and corners. Several windows are visible, some with dark shutters. In the foreground, there are green trees. The image is partially overlaid by a white diagonal shape in the top right and bottom left corners.

GRAHAM
ARCHITECTURAL PRODUCTS

*Historic
Window
Replication*

YOUR VISION.

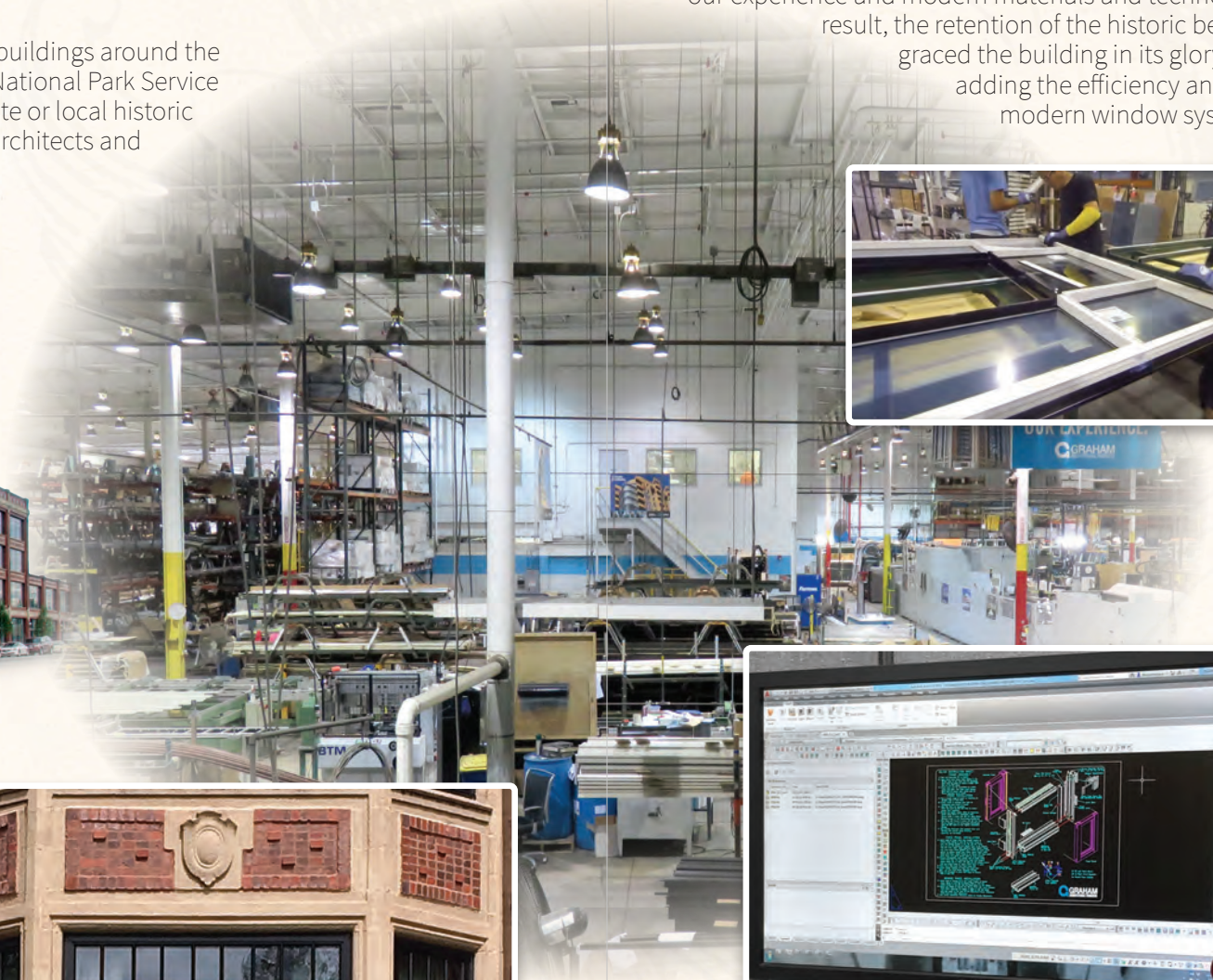
OUR EXPERIENCE.™



WHAT IS A "HISTORIC PROJECT?"

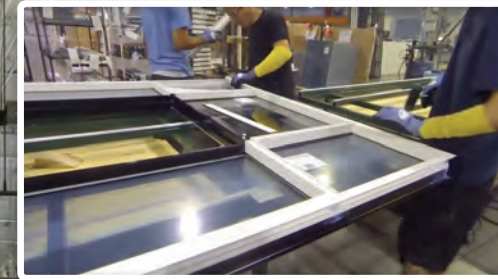
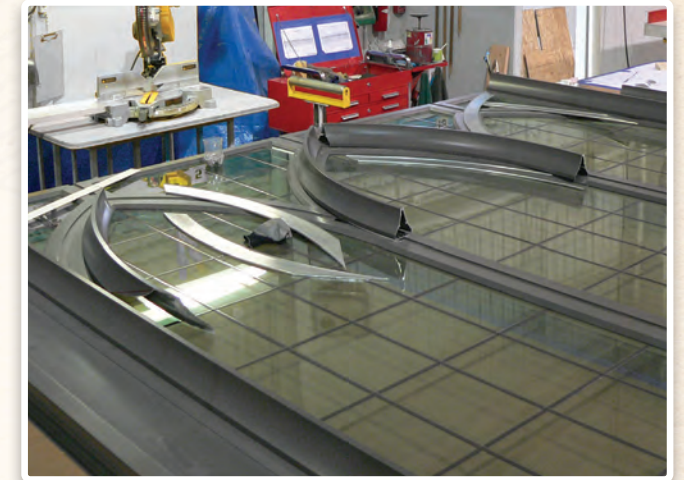
There are a variety of reasons why a particular project might be called historic. Often it's related to local, state or national governmental regulations or requirements. Sometimes it's purely the design vision of the owner and the architect. Regardless of the reason, we at Graham stand ready to help you recreate the look you desire.

For well over 40 years Graham has provided window and door products for buildings around the country that have earned "Historic" designations. Many of them are on the National Park Service (NPS) National Register of Historic Places. Countless more have received state or local historic designations. Over the years Graham has become the "go-to" company for architects and builders for their historic projects.



GRAHAM: THE HISTORIC WINDOW REPLICATION EXPERTS

Graham Architectural Products has been making historic window and door products for more than four decades. We can help you recreate the historic look and design you desire using our experience and modern materials and technology. The result, the retention of the historic beauty that once graced the building in its glory days, while adding the efficiency and security of a modern window system.

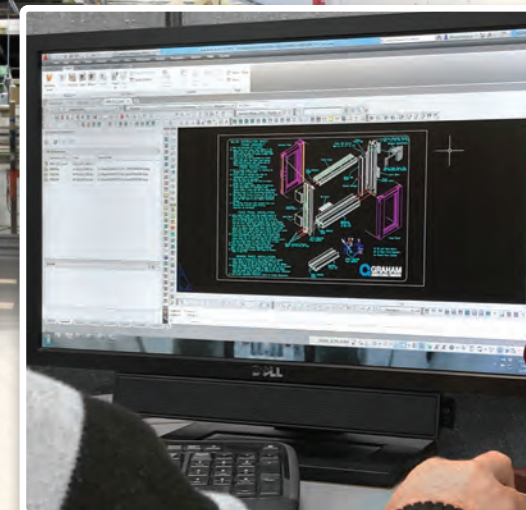


Our staff has extensive knowledge of the criteria and the intense architectural review these types of projects require so that we can ensure the proper design for the intended purpose. Our manufacturing facility has all the latest equipment and personnel capable of making near exact replicas to satisfy even the most demanding requests. We have a proven track record of replicating some of the most challenging projects our customers have been faced with.

DESIGN CAPABILITIES

Each and every job we do is custom engineered at our facility to meet your specifications. From structural design to hardware application and historic replication, your Graham windows and doors are built for just one customer ... you.

- Steel replication
- Curved-top windows
- Round or oval windows
- Historic glazing profiles
- Curved in plan windows
- Custom trim and panning
- Simulated hung windows
- Custom grids/muntins



The following pages highlight some of our recent historic projects. Each had their own unique challenge and Graham was able to deliver a solution satisfying the historic requirements.



Alden Park Manor in Philadelphia, PA, before and after window replacement



Alden Park Manor

Philadelphia, PA

Project Summary

Built in 1926 in the Jacobean Revival style, this apartment complex consists of three sets of towers: The Manor, Kenilworth, and the Cambridge building. It is listed on the National Register of Historic Places and was once the home of actress Grace Kelly.



21c Museum

Oklahoma City, OK

Project Summary

Built in 1916, the 21c Museum Hotel is a redevelopment of Oklahoma City's historic Fred Jones building. It was originally designed by the famed architect Albert Kahn and was built for Henry Ford as an assembly plant.



Yonkers City Hall

Yonkers, NY

Project Summary

Bringing greater energy efficiency to a 100-year-old building while meeting New York State Historic Preservation Office standards in the course of replacing 532 windows.



Cigar Factory

Charleston, SC

Project Summary

The Cigar Factory windows required National Park Service approval and also had to meet hurricane impact requirements, making Graham Architectural Products the perfect fit for bringing the old factory to life.



Francis L. Cardozo High School

Washington, D.C.

Project Summary

Built nearly a century ago and listed on the National Register of Historic Places, Cardozo underwent a dramatic renovation, reopening its doors in 2013 as a LEED Silver school.



Starrett-Lehigh

New York, NY

Project Summary

Unique architecture, very large window openings, and the need for exact replication to satisfy New York State Parks, Recreation and Historic Preservation added to the complexity of this iconic historic project.



Cable Mills

Williamstown, MA

Project Summary

This dramatic renovation earned the National Park Service's approval. It received the "Biggest Impact Rural/Suburban" award by Preservation Massachusetts.



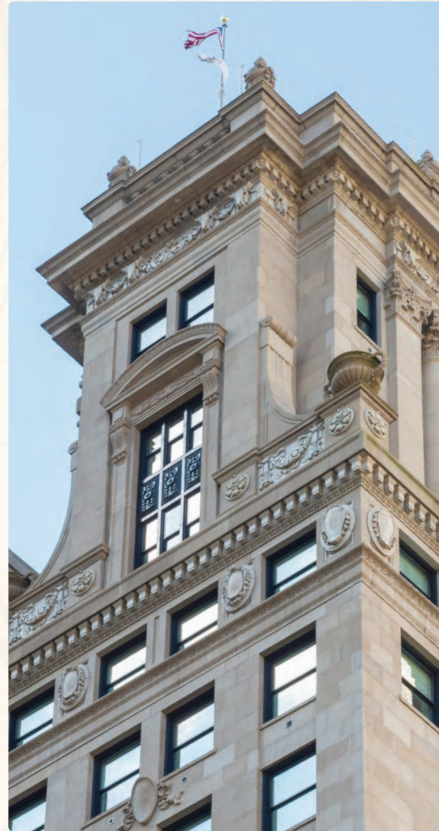


LondonHouse Chicago

Chicago, IL

Project Summary

In addition to National Park Service approval, ADA compliant projected windows were installed adjacent to the double hungs. The projected and double hung windows have similar sightlines and are indistinguishable from the exterior.



Intramural Sports Building, University of Michigan

Ann Arbor, MI

Project Summary

This 106,000 sq. ft. facility was built in 1928 and recently renovated. The ability to replicate the huge arched windows was a key reason Graham was chosen for the project.



University Hall, University of Toledo

Toledo, OH

Project Summary

Built in 1931, University Hall stands as the University of Toledo's most iconic building, its stately clock tower overlooks all campus activity.

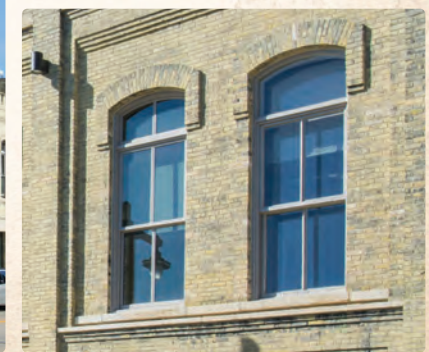


Eleven25 at Pabst

Milwaukee, WI

Project Summary

In order to meet historic preservation office demands, Graham had to replicate not only the original wood hung windows, but the original steel hung windows as well.





525@VINE

Winston-Salem, NC

Project Summary

Graham Architectural Products was called upon to simulate, manufacture and bring energy efficiency to more than 1,200 historic windows at 525@Vine. A highly compressed timeline and the need for National Park Service approvals only added to the challenge.

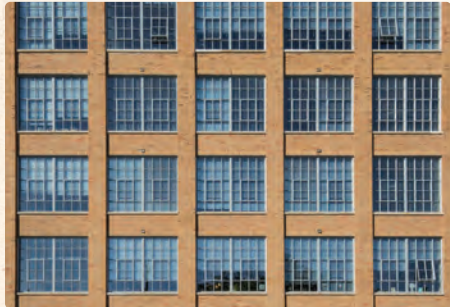


Artist Lofts

Manitowac, WI

Project Summary

The developers working towards transforming a former Mirro Aluminum plant were seeking tax credits. Windows were the building's dominant architectural feature -- which is where Graham Architectural Products came in.



The Lofts at Loomworks

Worcester, MA

Project Summary

Built in 1890, this former textile mill sat empty for many years. The adaptive reuse project restored this historic gem to a 94 unit apartment complex and Graham's windows were a perfect fit.

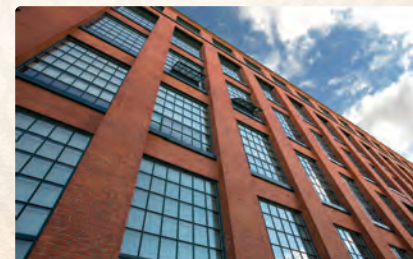
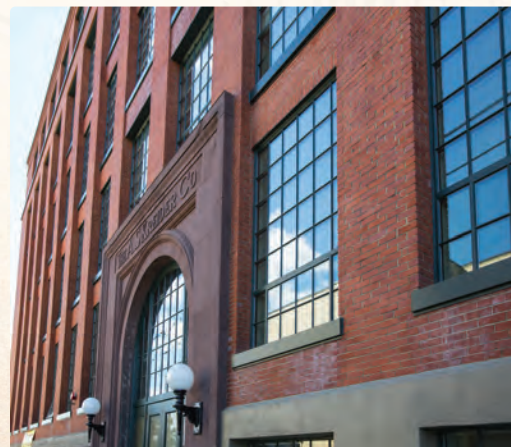


Kreider Commons

Lebanon, PA

Project Summary

Kreider Commons was once home to the world's largest manufacturer of children's and toddlers' shoes. Graham supplied more than 200 of our SR6700 Steel Replication windows to help restore the building to its original splendor.

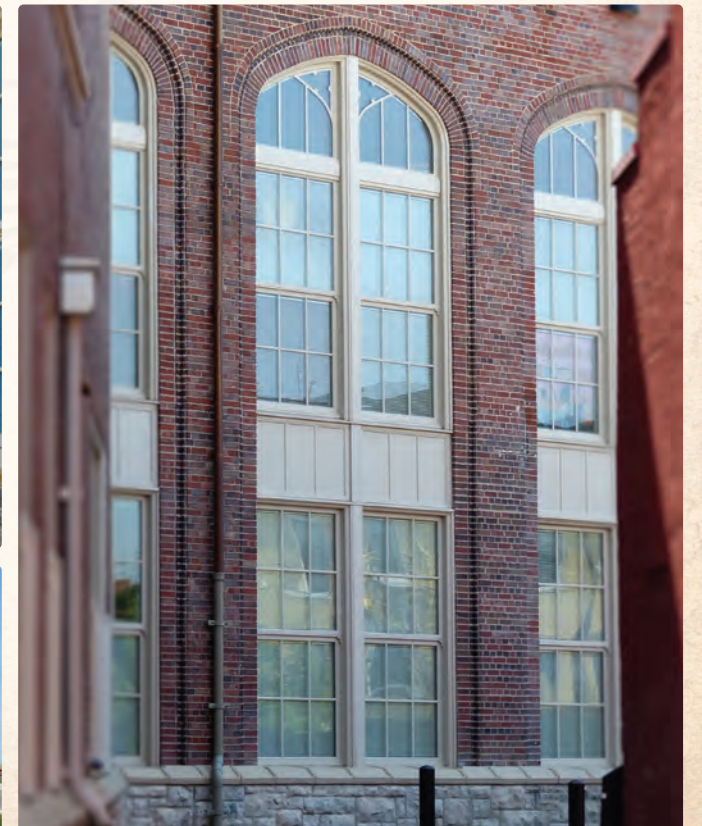


Rothenberg Preparatory Academy

Cincinnati, OH

Project Summary

This century-old building was spared from demolition by the local community and an historic foundation. Graham contributed historically accurate windows to the project.



Convention Hall at Asbury Park

Asbury Park, NJ

Project Summary

Renovating and simultaneously preserving a historically prominent landmark such as Asbury Park Convention Hall requires a delicate balance, particularly when done under the critical eye of the National Park Service.



Firestone Triangle Building

Akron, OH

Project Summary

After sitting vacant for nearly a decade, the building was renovated into a modern workspace. Graham's task was to convince the historic preservation architectural firm that an aluminum window was a viable solution for replicating the original steel windows.

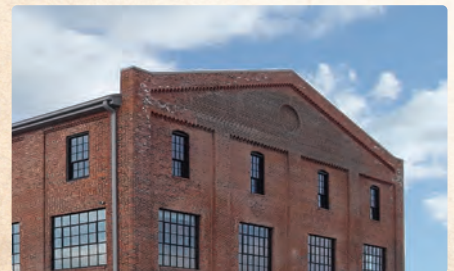


Hercules

Cincinnati, OH

Project Summary

Countering the high windloads inherent in these enormous window units, some as large as 7'-2" x 12', required innovative solutions. Because windows at this size weigh close to 600 pounds, Graham also had to provide an efficient means of fabrication and installation.



Mass Mills

Lowell, MA

Project Summary

An early 20th century dilapidated mill in Lowell, MA was transformed into riverfront apartments. The 70 apartments feature Graham's historically accurate window reproduction.



Select Graham Historic Projects

Here are some of the many historic projects Graham has completed.

Project Name	Location	Project Name	Location
Starrett-Lehigh Kreider Commons 21c Museum	New York, NY Lebanon, PA Oklahoma City, OK	Mark Hopkins Hotel Santa Fe II 1925 High School	San Francisco, CA Dallas, TX Tuscaloosa, AL
* Artist Lofts	Manitowoc, WI	Lantrip Elementary 129 E. 69 th Street	Houston, TX New York, NY
* The Cigar Factory Cable Mills	Charleston, SC Williamstown, MA	I.M. Terrell School SMU Cox & Fincher	Ft. Worth, TX Dallas, TX
* Asbury Park Convention Hall 253-256 Broadway	Asbury Park, NJ New York, NY	* U.S. Post Office/Courthouse SMU Shuttles & Boaz Halls	Alexandria, LA Dallas, TX
Toledo Hall, University of Toledo Univ. of Michigan Law School & Bridge	Toledo, OH Ann Arbor, MI	Stephen F. Austin Middle School NBNA Bank	Galveston, TX Newark, DE
* Firestone Triangle Building Hughes High School	Akron, OH Cincinnati, OH	John L. Miller North High School Old Revenue Building	Great Neck, NY Raleigh, NC
* Francis L. Cardozo High School St. Louis University Museum of Art	Washington, D.C. St. Louis, MO	Genesis Healthcare SMU Peyton & Mary Hay Halls	Kennett Square, PA Dallas, TX
* Icon, 1616 Walnut Street The Old Cathedral Basilica Edman Memorial Chapel	Philadelphia, PA St. Louis, MO Wheaton, IL	LSU Stadium, Cultural Arts * Federal Court House	Baton Rouge, LA Okmulgee, OK
* Baltimore City College Columbus Historic District El Segundo High School	Baltimore, MD Columbus, GA El Segundo, CA	Grover Cleveland High School * LeClaire Hotel	Buffalo, NY Moline, IL
Liberty Bank Building The Athenaeum Candler Library	Pittsburgh, PA Cincinnati, OH Atlanta, GA	Wilson & Giles Halls, Duke Univ. Harvard Elementary Abraham Lincoln High School	Durham, NC Houston, TX Denver, CO
* Alden Park	Philadelphia, PA	* Leon High School * Temple Gardens	Tallahassee, FL Baltimore, MD
* Edison Battery Building Cincinnati Post Office Metropolitan Building	West Orange, NJ Cincinnati, OH	Wyndham La Belle Maison Walker Lofts	New Orleans, LA Long Beach, CA
* Lathrop Homes Shinola Hotel	Detroit, MI Chicago, IL Detroit, MI	J.P. McCaskey H.S. * Morris High School	Lancaster, PA Bronx, NY
* Rockford Embassy Suites	Rockford, IL	Avenue Lofts University Lofts	Denver, CO St. Louis, MO
* Welford Sanders Lofts	Milwaukee, WI	Meriden City Hall Republic Tower	Meriden, CT Dallas, TX
* 30th Street Station	Philadelphia, PA	Creiger Elementary School Ogden Municipal Building	Chicago, IL Ogden, UT
* Hercules Building Herbert C. Hoover Building Times Lofts	Canton, OH Washington, D.C. Bay City, MI	The Arcade Cole Middle School SMU Morrison	Cleveland, OH Denver, CO Dallas, TX
Murray Building	Peoria, IL	Clock Tower Lofts Roberts Elementary	Denver, CO Houston, TX
* Delco Building Chicago Athletic Association Mt. Tamalpais High School West H.S.	Dayton, OH Chicago, IL Mill Valley, CA	William & Mary/Tyler Hall Briggs Pump Station Stevenson Elementary	Williamsburg, VA Omaha, NE Houston, TX
Abraham Lincoln High School Wire Works Kress Lofts	San Francisco, CA St. Louis, MO Long Beach, CA	Jefferson Barracks * Tribune Tower	St. Louis, MO Chicago, IL Alexandria, VA
* Stegmaier Building Erasmus Hall High School Ritz Carlton Hotel	Wilkes-Barre, PA New York, NY Philadelphia, PA	* Alexandria Federal Courthouse Greeley Cent. H.S.	Greeley, CO West Lafayette, IN
VAMC Kansas City Baltimore City College Pomfret School	Kansas City, MO Baltimore, MD Pomfret, CT	University Hall, Purdue University Lambeth House * Red Cross Building	New Orleans, LA Washington, DC Dallas, TX
Miles Standish E.S. Kirby Building St. Lukes Lofts	Cleveland, OH Dallas, TX Denver, CO	SMU Dedman Life Science Concord Library * Blackstone Hotel	London, TX Chicago, IL Denver, CO
Southern Ohio Museum * Marshfield Post Office	Portsmouth, OH Marshfield, WI	Lincoln Elementary School Hot Springs, VAMC Alumni Hall, Miami University	Hot Springs, SD Oxford, OH Houston, TX
* Tribune Building YWCA Manual Arts School	Tulsa, OK Cincinnati, OH Los Angeles, CA	Travis Elementary Keating Hall, Fordham University * National Terminal Warehouse Apts.	Philadelphia, PA Cleveland, OH Madison, WI
* Guggenheim Bldg., Georgia Tech. Bronx County Courthouse SMU Library	Atlanta, GA Bronx, NY Dallas, TX	Commack Schools Missouri Athletic Club HISD Browning Elementary	Commack, NY St. Louis, MO Houston, TX
Rocky Mountain Lofts Steelbridge Lofts	Denver, CO Denver, CO	SMU Morrison-McGinnis Commons Richmond Mosque * Continental Building	Dallas, TX Richmond, VA St. Louis, MO
* Willys-Overland Building River Oaks Elementary school Anheuser-Busch	St. Louis, MO Houston, TX St. Louis, MO	Marlborough Apts. Hollywood Roosevelt Hotel	Baltimore, MD Los Angeles, CA
* Renaissance Fulton Hotel	Pittsburgh, PA		

* Indicates projects on the National Parks Service's National Register of Historic Places

