

# Sliding Glass Door - 4"

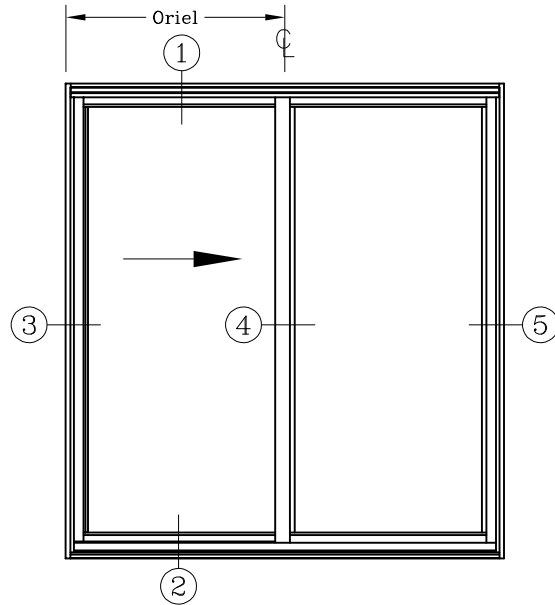
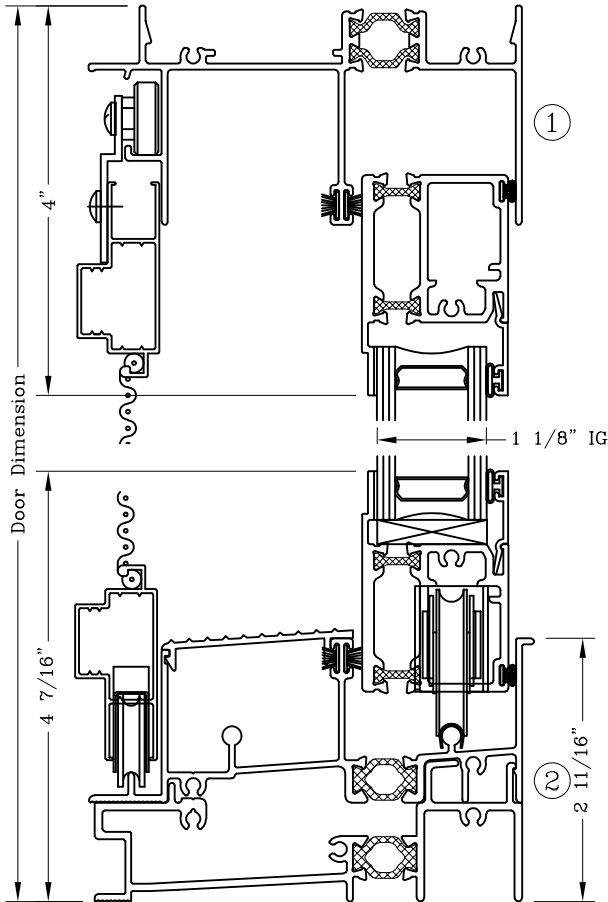


Series: S0900

Manufacturing Code: S0901

Drawing 1/2 Scale - For Custom Size Drawing Contact Graham

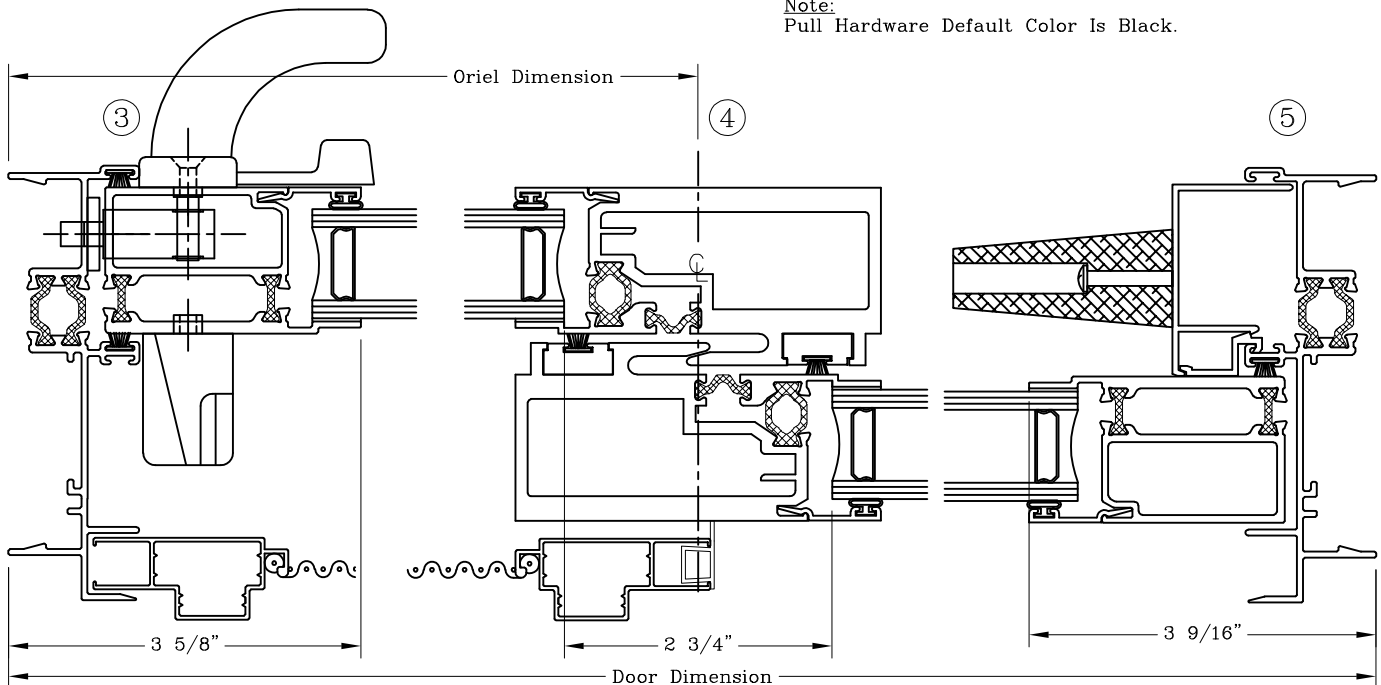
Note: Sealant Not Shown On Details. Consult Technical Services At Factory For Sealing Procedures.



**ELEVATION**

XO - Shown  
OX - Opposite

Note:  
Pull Hardware Default Color Is Black.



# Sliding Glass Door - 4"

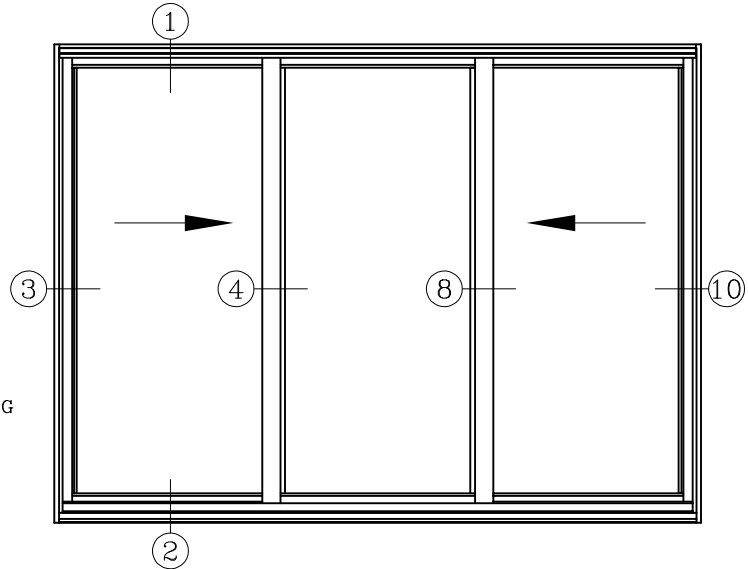
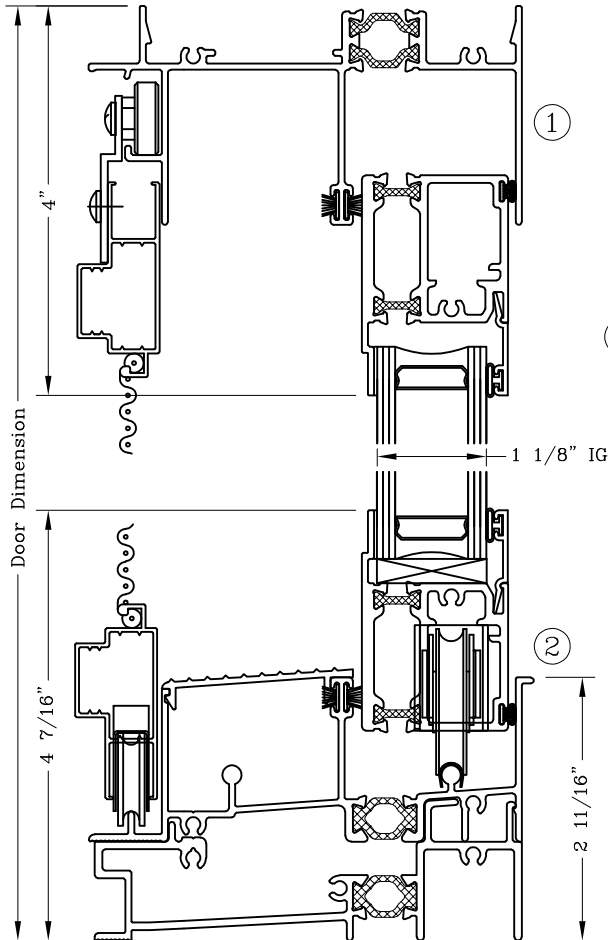


Series: S0900

Manufacturing Code: S0902

Drawing 1/2 Scale - For Custom Size Drawing Contact Graham

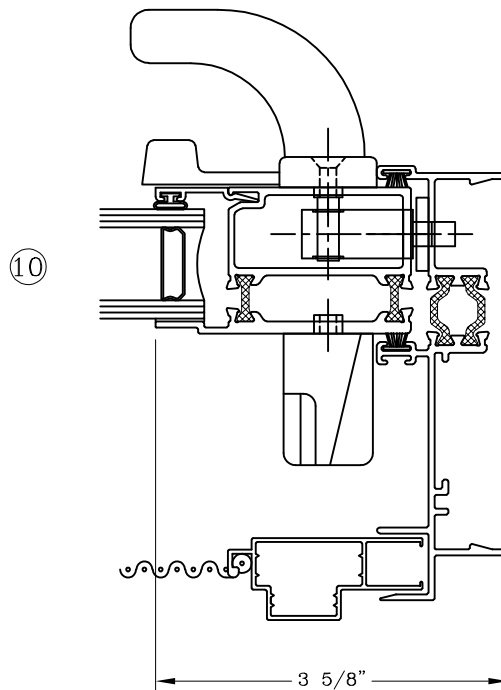
Note: Sealant Not Shown On Details. Consult Technical Services At Factory For Sealing Procedures.



ELEVATION  
XOX

Note:

1. Reference Page S09.01 For Details #3, and #4.
2. Reference Page S09.04 For Details #8.
3. Pull Hardware Default Color Is Black.



# Sliding Glass Door - 4"

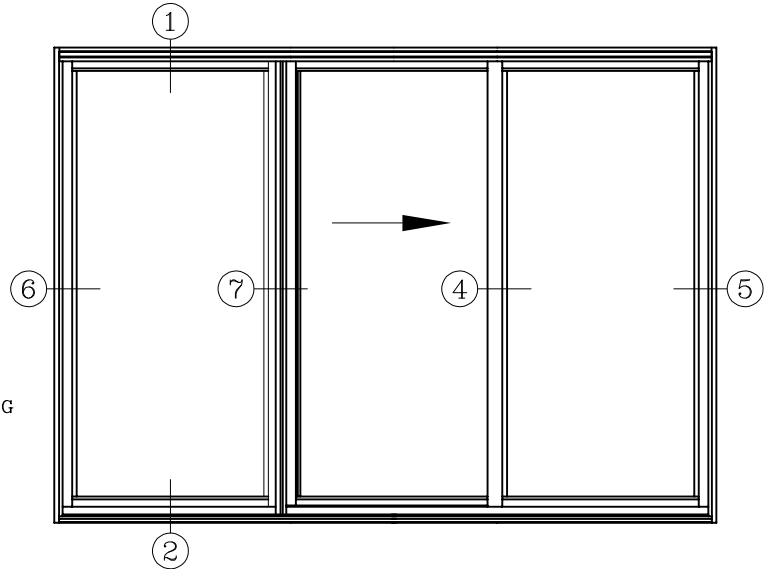
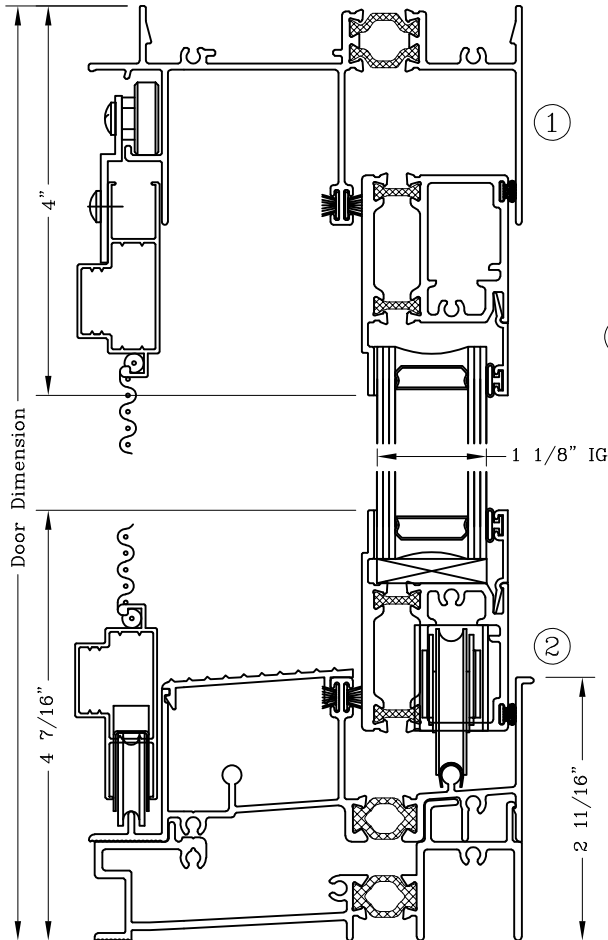


Series: S0900

Manufacturing Code: S0903

Drawing 1/2 Scale - For Custom Size Drawing Contact Graham

Note: Sealant Not Shown On Details. Consult Technical Services At Factory For Sealing Procedures.

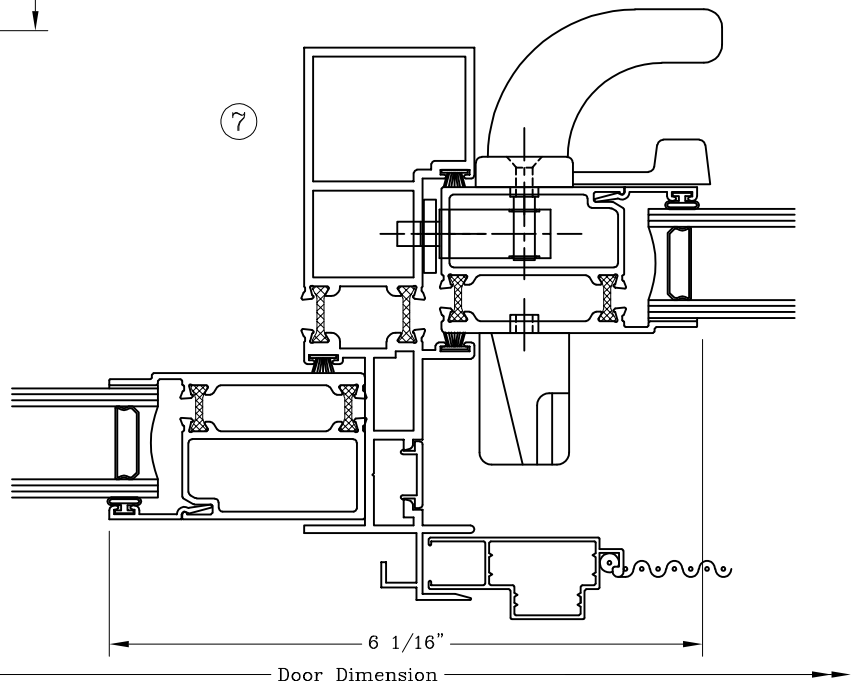
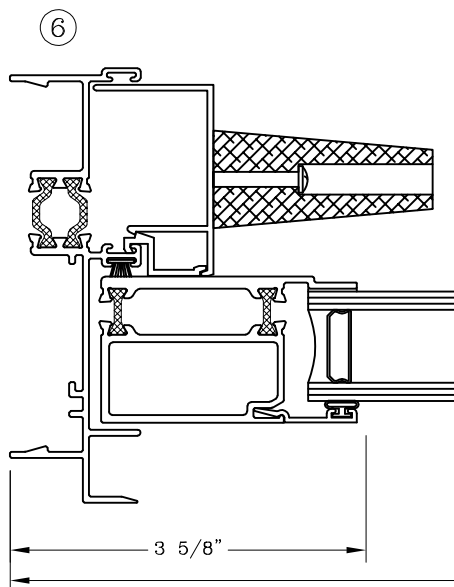


### ELEVATION

OXO - Shown w/ Panel Sliding Right  
 OXO - Opposite w/ Panel Sliding Left

**Note:**

1. Reference Page S09.02 For Details #4, and #5.
2. Pull Hardware Default Color Is Black.



# Sliding Glass Door - 4"

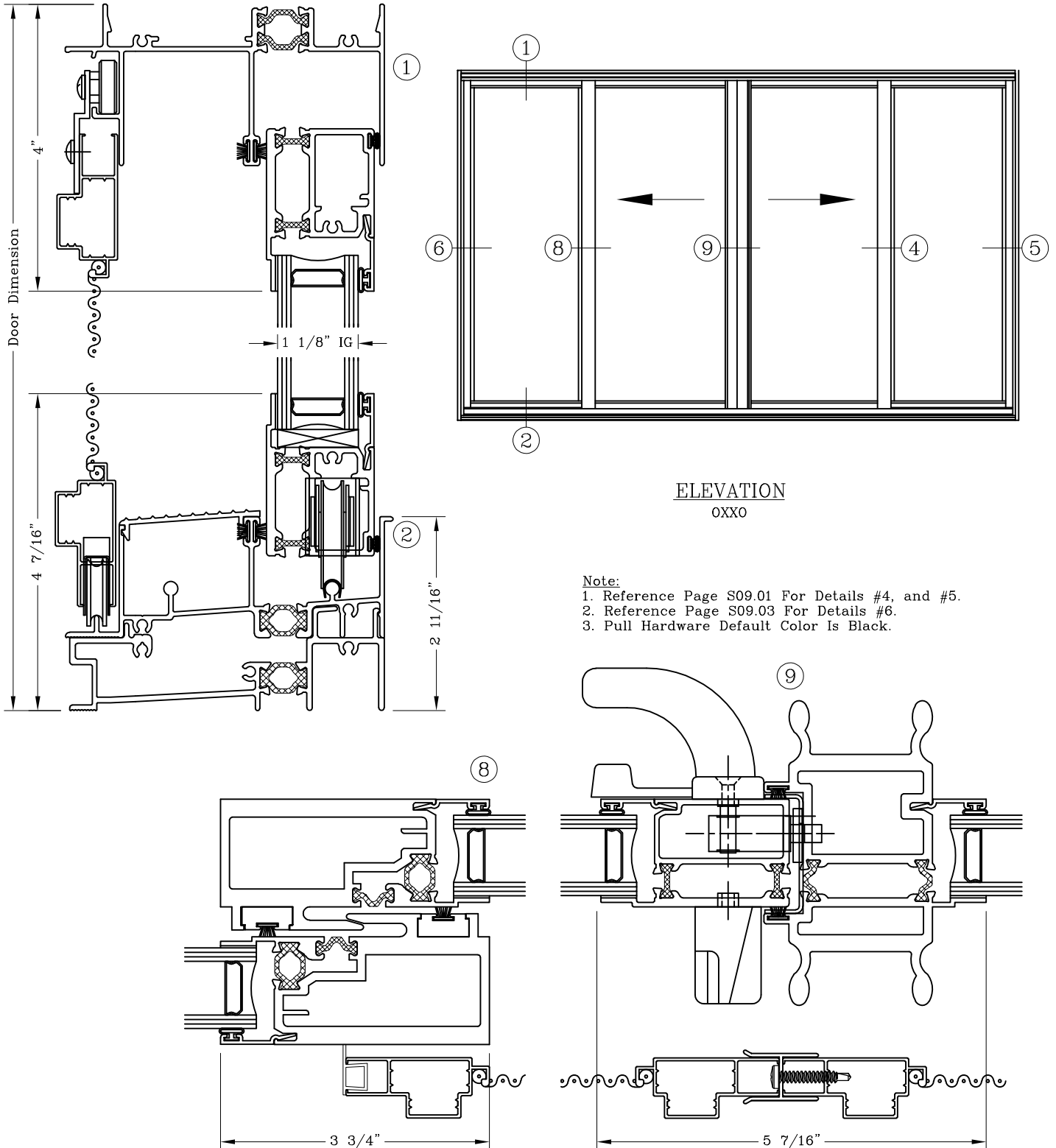


Series: S0900

Manufacturing Code: S0904

Drawing 1/2 Scale - For Custom Size Drawing Contact Graham

Note: Sealant Not Shown On Details. Consult Technical Services At Factory For Sealing Procedures.



ELEVATION  
OXXO

Note:

1. Reference Page S09.01 For Details #4, and #5.
2. Reference Page S09.03 For Details #6.
3. Pull Hardware Default Color Is Black.

# Sliding Glass Door - 4" Head Options

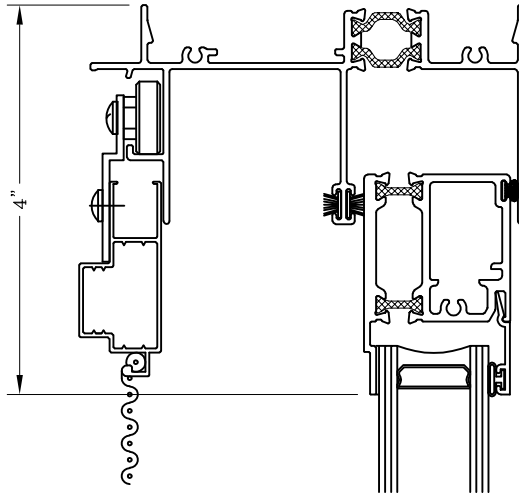


Series: S0900

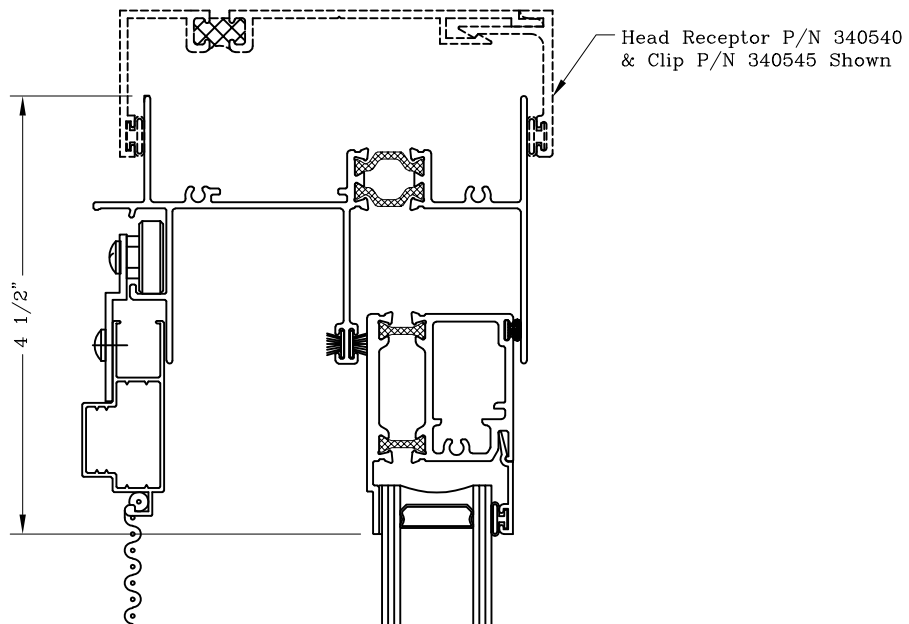
Manufacturing Code: S0907

Drawing 1/2 Scale - For Custom Size Drawing Contact Graham

Note: Sealant Not Shown On Details. Consult Technical Services At Factory For Sealing Procedures.



Standard Frame Head  
P/N 090315



Optional Frame Head For  
Receptor Applications  
P/N 090316

# Sliding Glass Door - 4" Frame Options

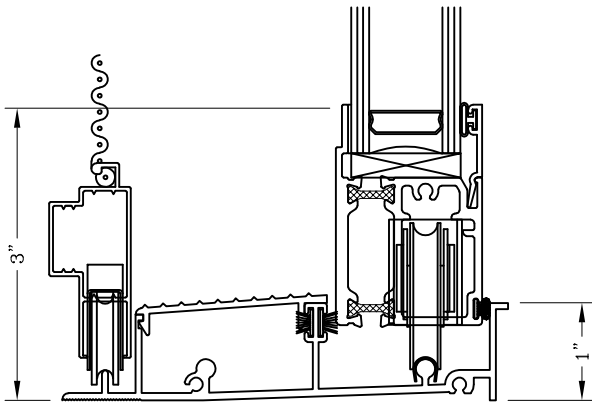


Series: S0900

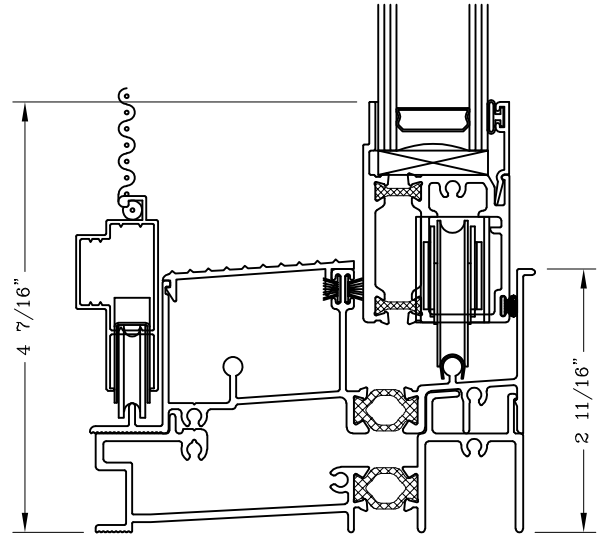
Manufacturing Code: S0910

Drawing 1/2 Scale - For Custom Size Drawing Contact Graham

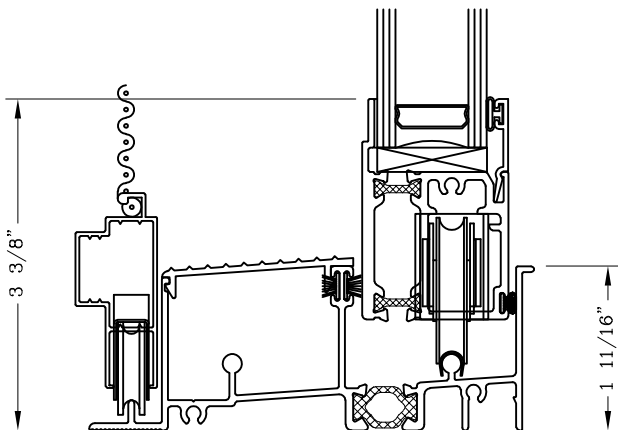
Note: Sealant Not Shown On Details. Consult Technical Services At Factory For Sealing Procedures.



Low Sill  
P/N 090025

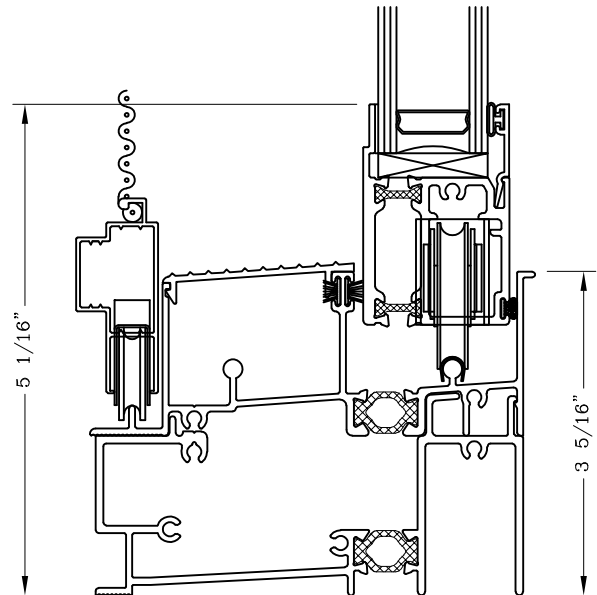


#10 WTP Sill  
P/N 090326



#5.00 WTP Sill  
P/N 090325

Note:  
Optional #5.00 WTP Sill Does Not Meet HC-50 Water  
Resistance Test.



#12 WTP Sill  
P/N 090327

# Sliding Glass Door - 4" Interlock Options

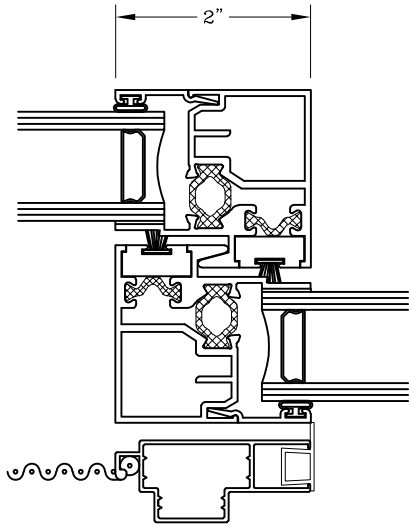


Series: S0900

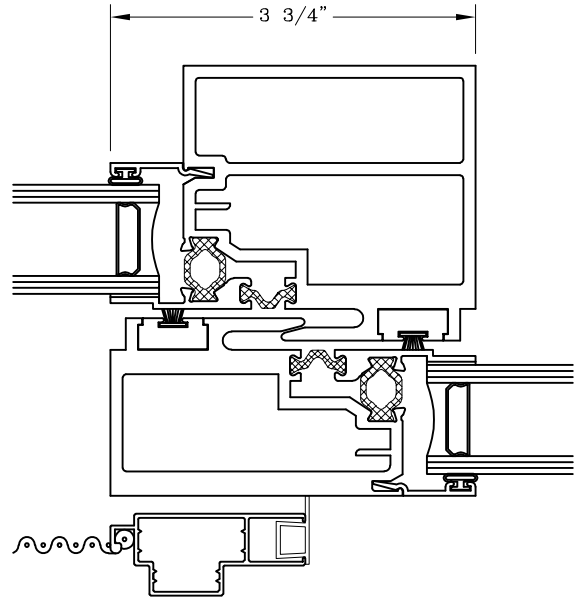
Manufacturing Code: S0911

Drawing 1/2 Scale - For Custom Size Drawing Contact Graham

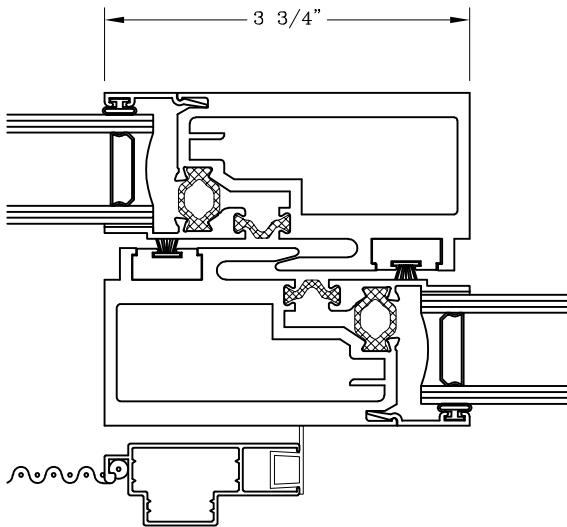
Note: Sealant Not Shown On Details. Consult Technical Services At Factory For Sealing Procedures.



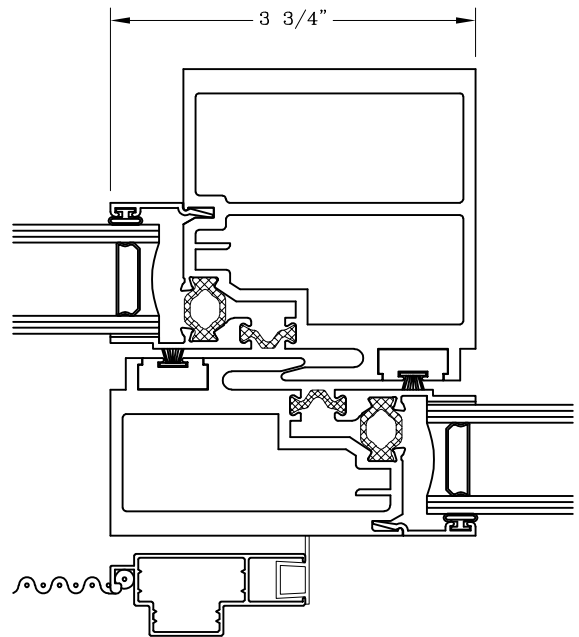
LC (Light Commercial)



AW-40 (Architectural Window)



CW (Commercial Window)



AW-60 (Architectural Window)