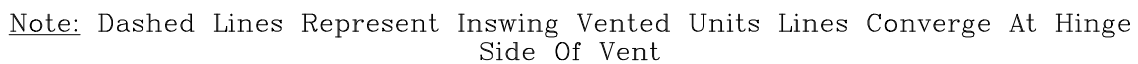


**G** **GRAHAM**  
ARCHITECTURAL PRODUCTS

**Note:** Sealant Not Shown On Details. Consult Technical Services At Factory For Sealing Procedures.



# Fixed/Fixed Window – 4” Human Impact Window

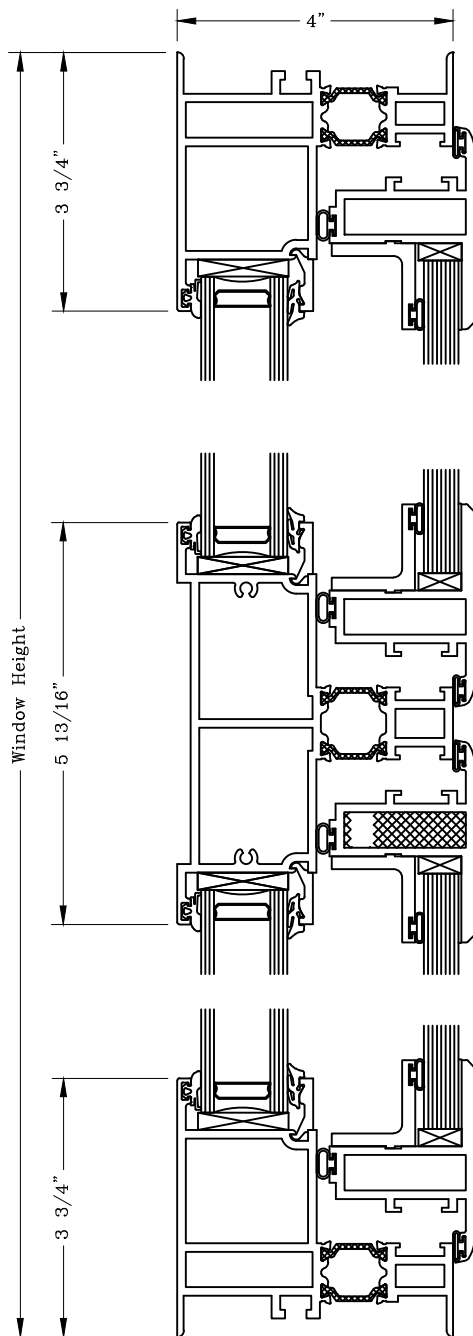


Series: S6300

Manufacturing Code: S6303

Drawing 1/2 Scale – For Custom Size Drawing Contact Graham

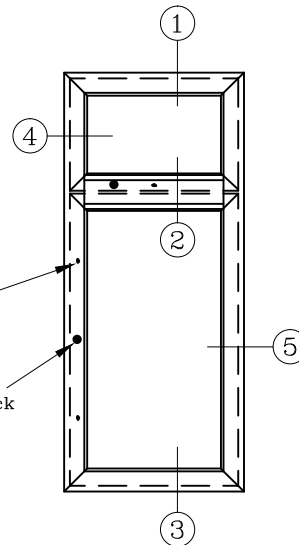
Note: Sealant Not Shown On Details. Consult Technical Services At Factory For Sealing Procedures.



①

Concealed Lock  
Mechanism  
With Capture Key  
Feature

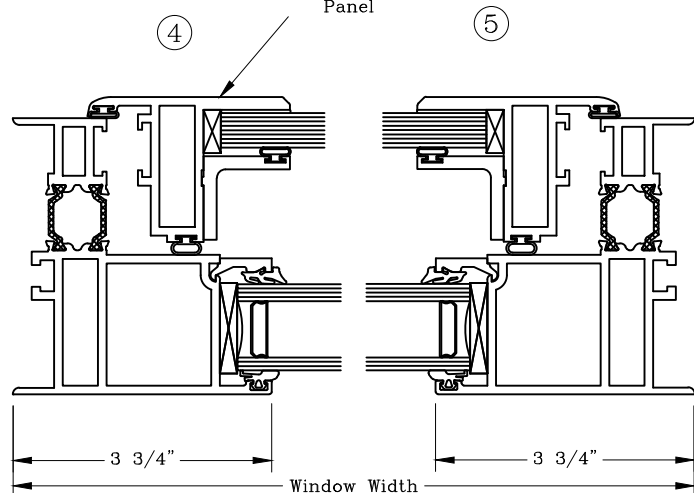
7 Pin Tumbler  
GEM Tubular Key Lock



ELEVATION

②

Blind Access  
Panel



③

Note: Dashed Lines Represent Inswing Vented Units Lines Converge At Hinge  
Side Of Vent

# Casement Window – 4” Human Impact Window

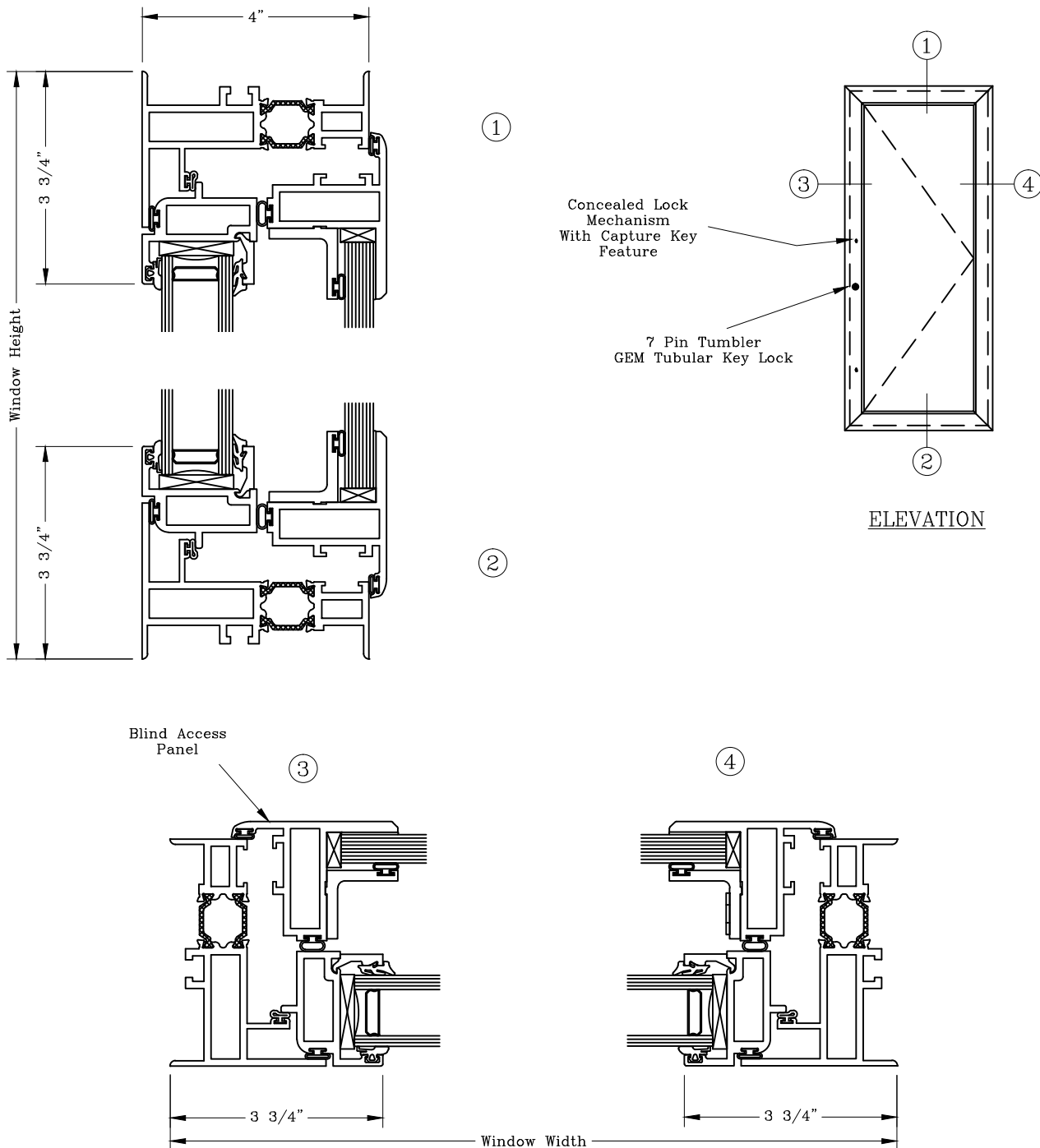


Series: S6300

Manufacturing Code: S6305

Drawing 1/2 Scale – For Custom Size Drawing Contact Graham

**Note:** Sealant Not Shown On Details. Consult Technical Services At Factory For Sealing Procedures.



**Note:** Dashed Lines Represent Inswing Vented Units Lines Converge At Hinge Side Of Vent

# Fixed/Casement Window – 4” Human Impact Window

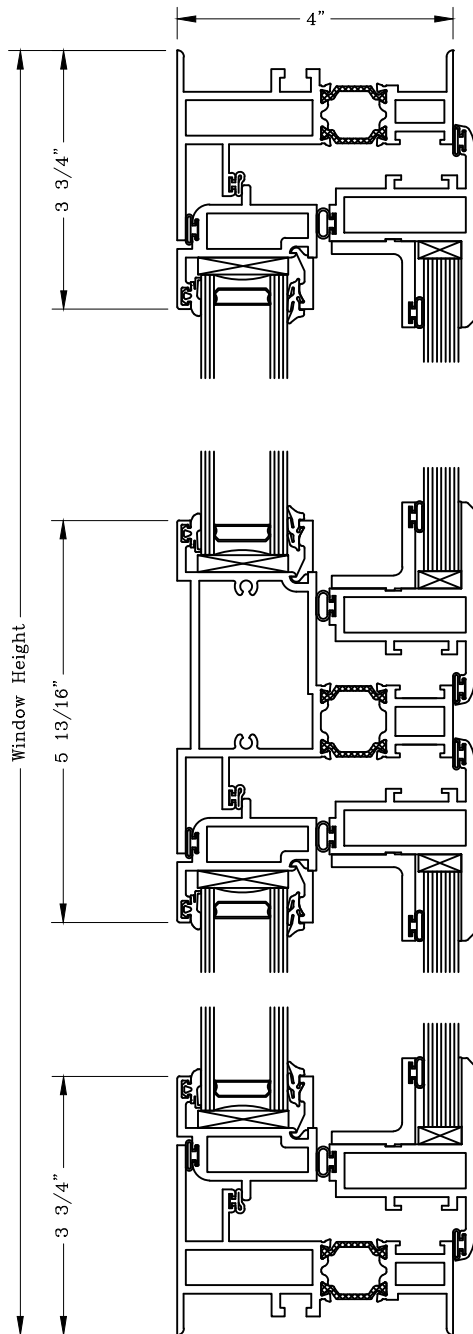


Series: S6300

Manufacturing Code: S6307

Drawing 1/2 Scale – For Custom Size Drawing Contact Graham

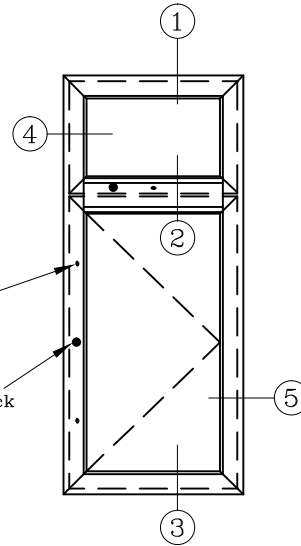
Note: Sealant Not Shown On Details. Consult Technical Services At Factory For Sealing Procedures.



①

Concealed Lock  
Mechanism  
With Capture Key  
Feature

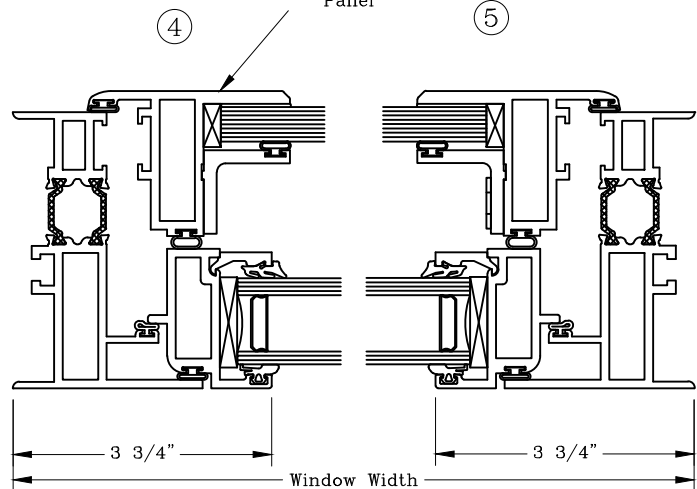
7 Pin Tumbler  
GEM Tubular Key Lock



ELEVATION

②

Blind Access  
Panel



③

Note: Dashed Lines Represent Inswing Vented Units Lines Converge At Hinge  
Side Of Vent

# Casement Window – 4” Hardware

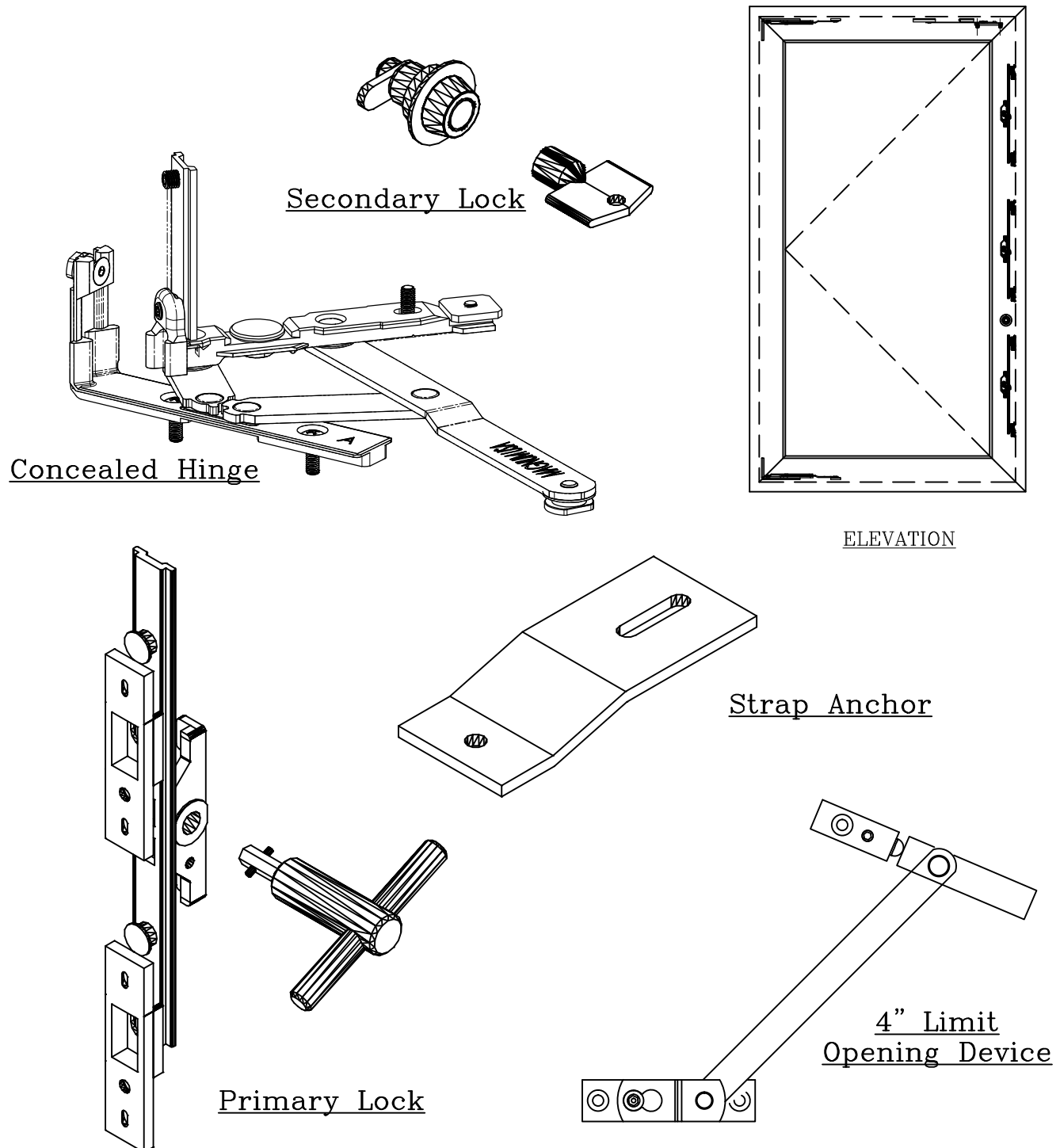


Series: S6300

Manufacturing Code:

Drawing 1/2 Scale – For Custom Size Drawing Contact Graham

Note: Sealant Not Shown On Details. Consult Technical Services At Factory For Sealing Procedures.



# 1" Blind Option Fixed Wdw. Human Impact Window

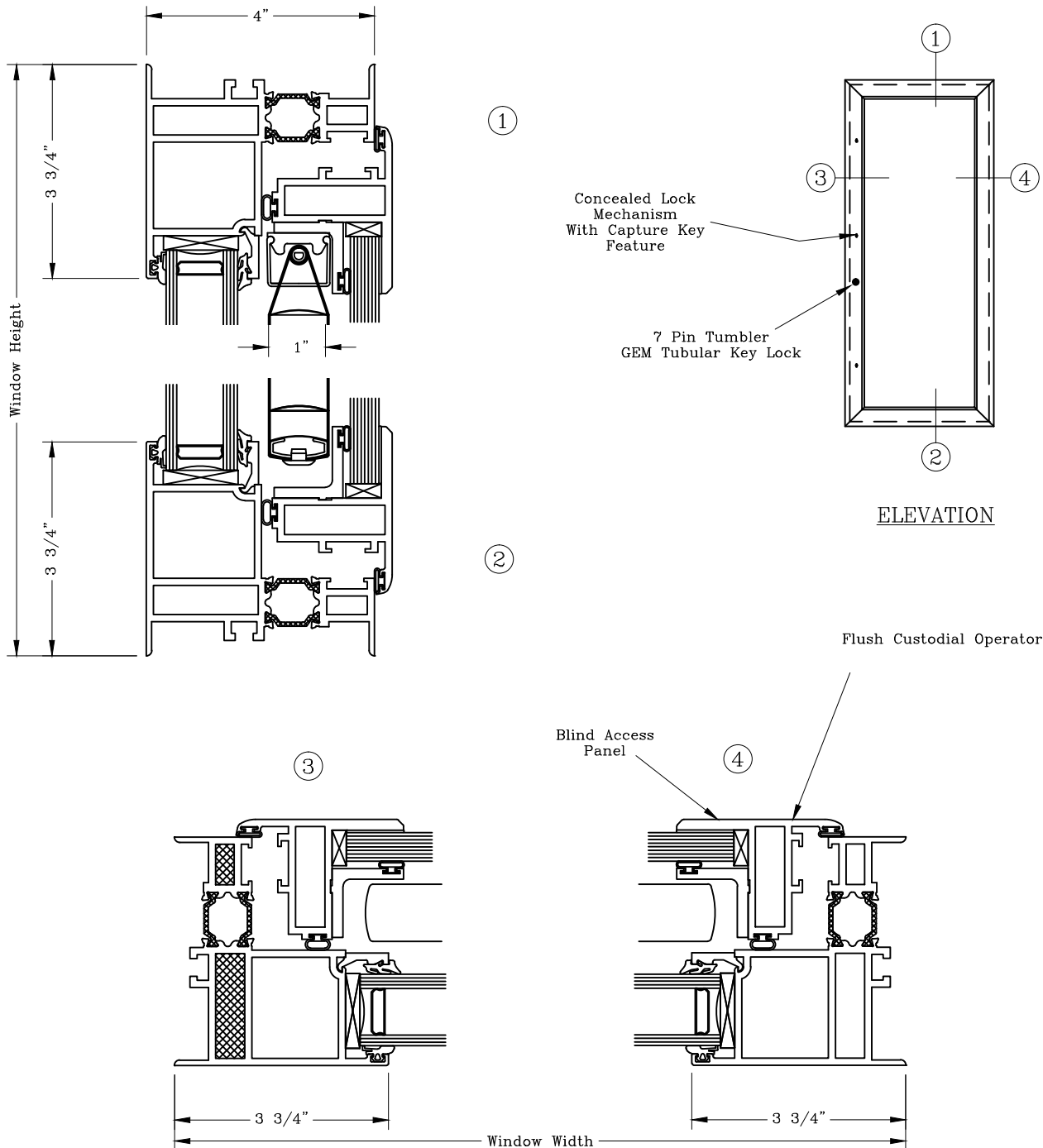


Series: S6300

Manufacturing Code:

Drawing 1/2 Scale – For Custom Size Drawing Contact Graham

Note: Sealant Not Shown On Details. Consult Technical Services At Factory For Sealing Procedures.



Note: Dashed Lines Represent Inswing Vented Units Lines Converge At Hinge Side Of Vent

# 1" Blind Option Project Wdw. Human Impact Window

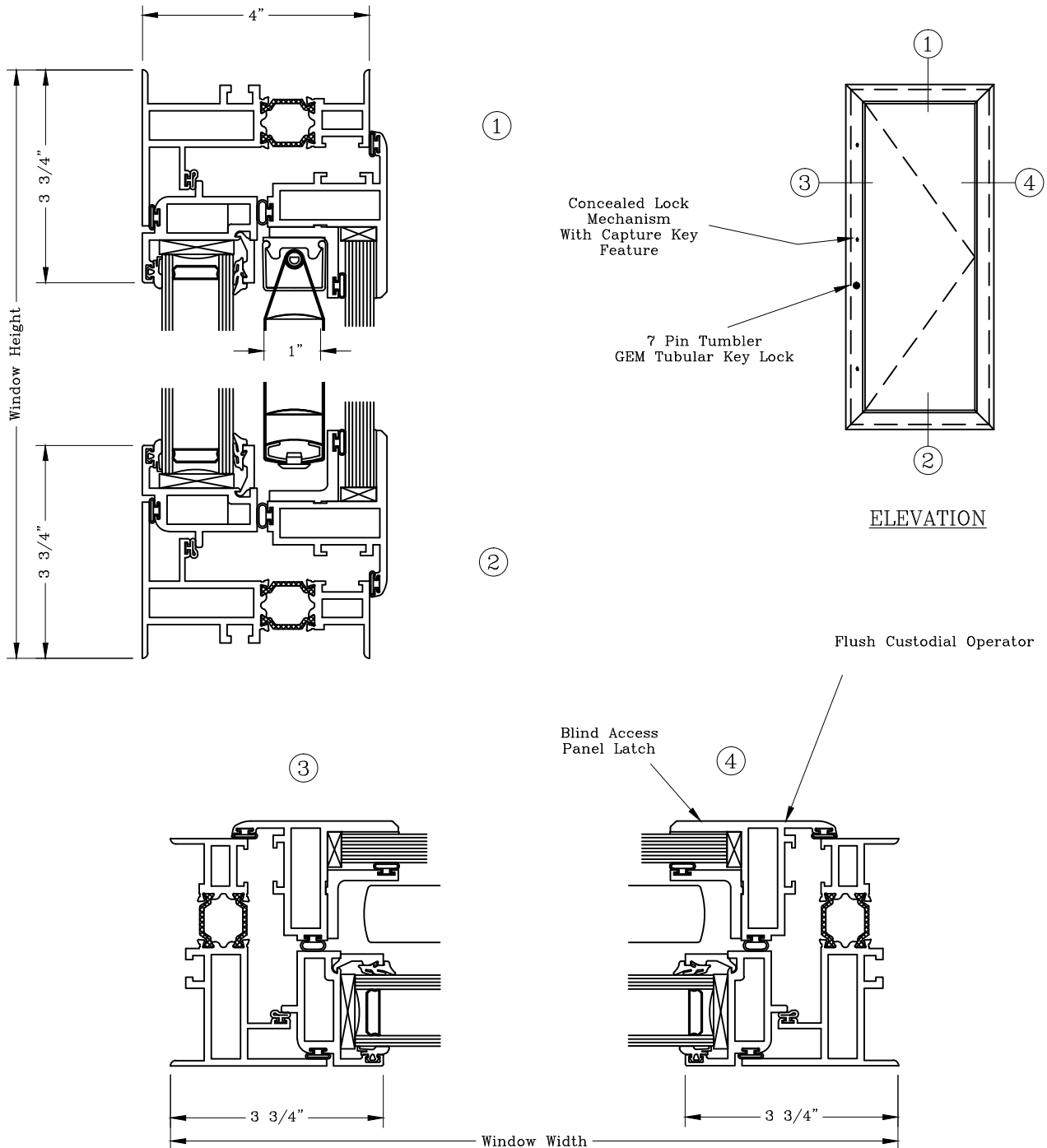


Series: S6300

Manufacturing Code:

Drawing 1/2 Scale – For Custom Size Drawing Contact Graham

**Note:** Sealant Not Shown On Details. Consult Technical Services At Factory For Sealing Procedures.



**Note:** Dashed Lines Represent Inswing Vented Units Lines Converge At Hinge Side Of Vent

# Glazing Option – 4” Human Impact Window

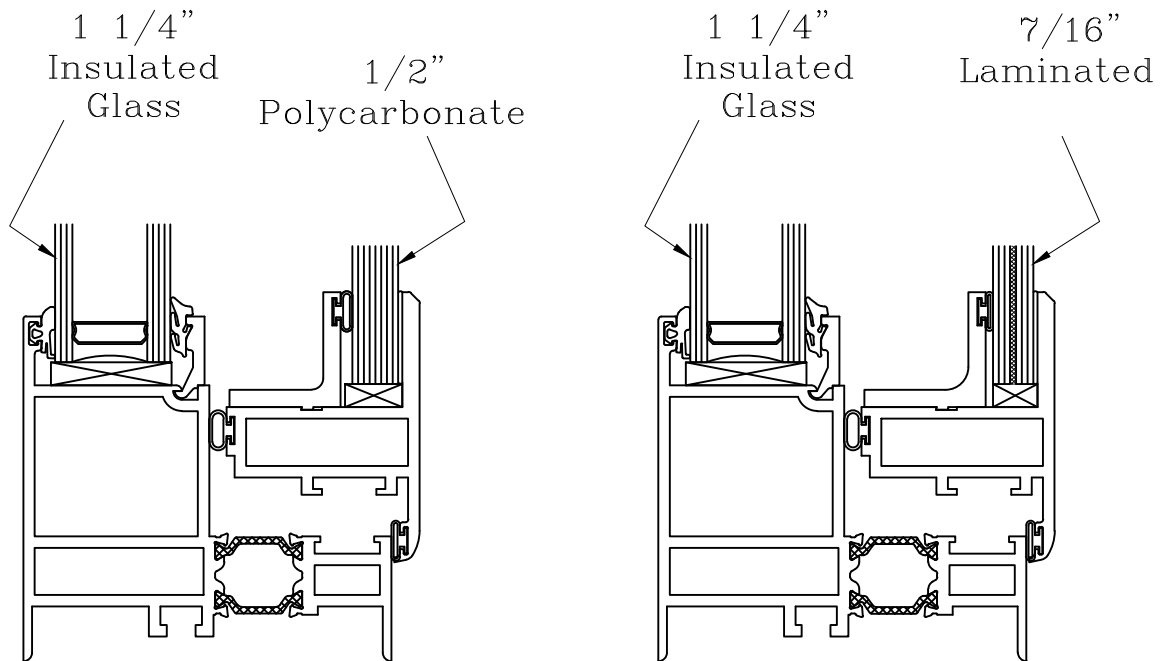


Series: S6300

Manufacturing Code:

Drawing 1/2 Scale – For Custom Size Drawing Contact Graham

Note: Sealant Not Shown On Details. Consult Technical Services At Factory For Sealing Procedures.



Note: Dashed Lines Represent Inswing Vented Units Lines Converge At Hinge  
Side Of Vent

# Casement Window – 2 7/16” C.W. Human Impact Window

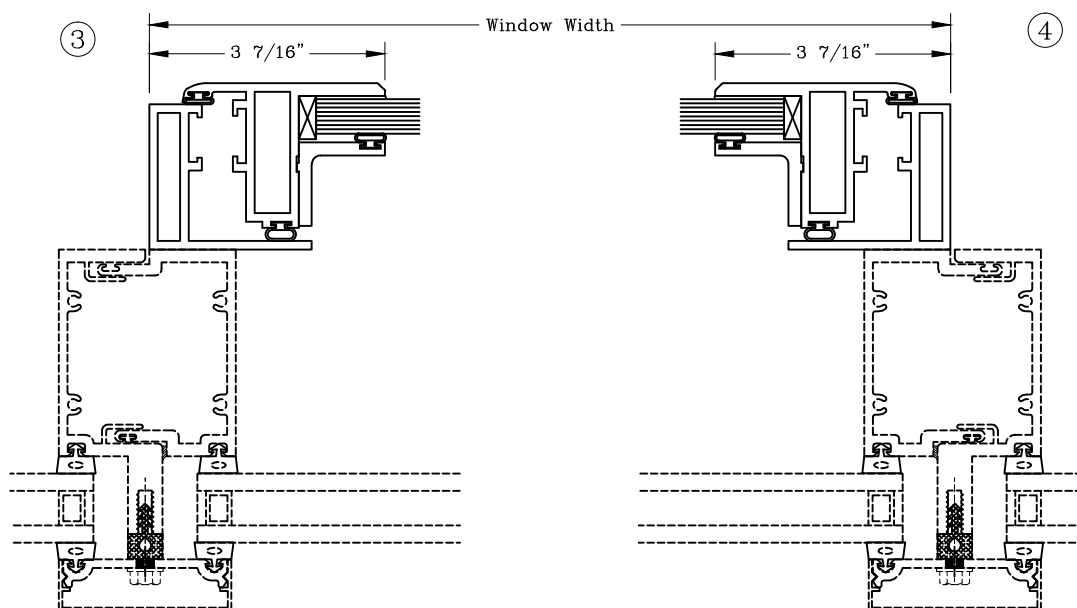
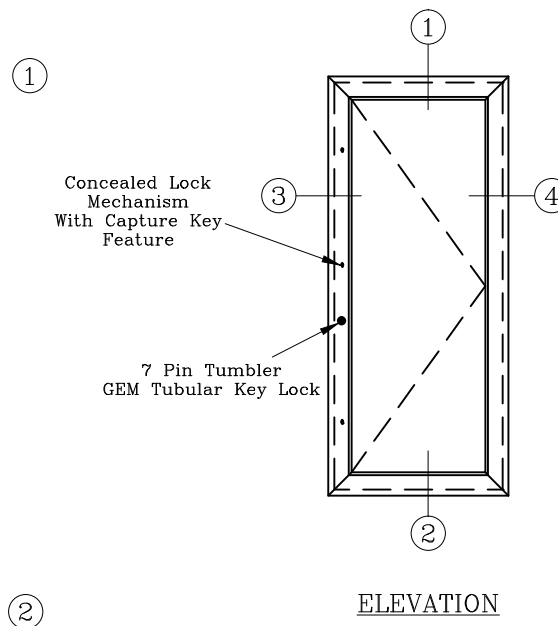
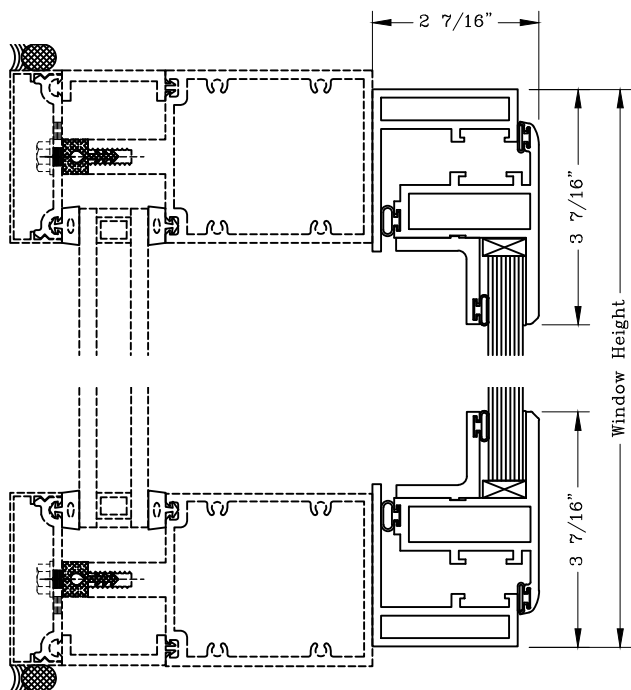


Series: S6300

Manufacturing Code: S6315

Drawing 1/2 Scale – For Custom Size Drawing Contact Graham

**Note:** Sealant Not Shown On Details. Consult Technical Services At Factory For Sealing Procedures.



**Note:** Dashed Lines Represent Inswing Vented Units Lines Converge At Hinge Side Of Vent

# 1" Blind Option Project Wdw. C.W. Human Impact Window

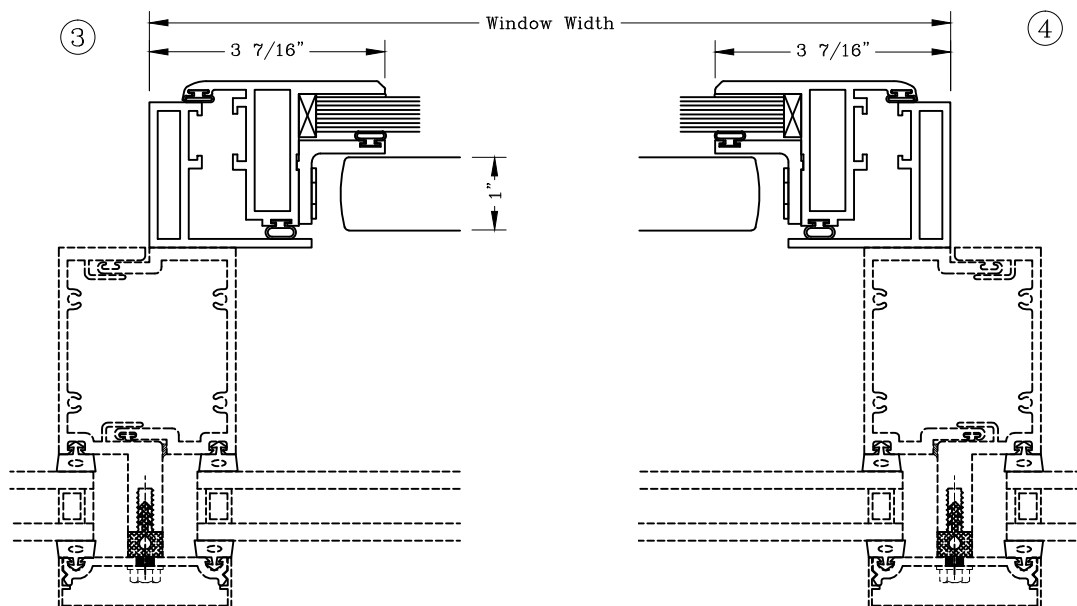
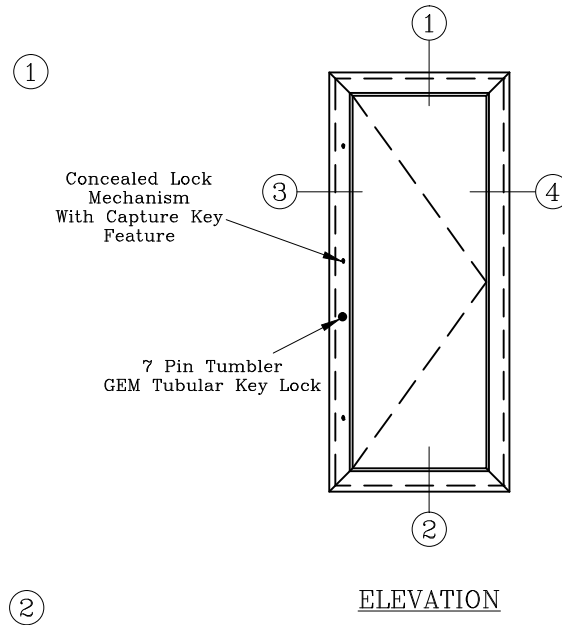
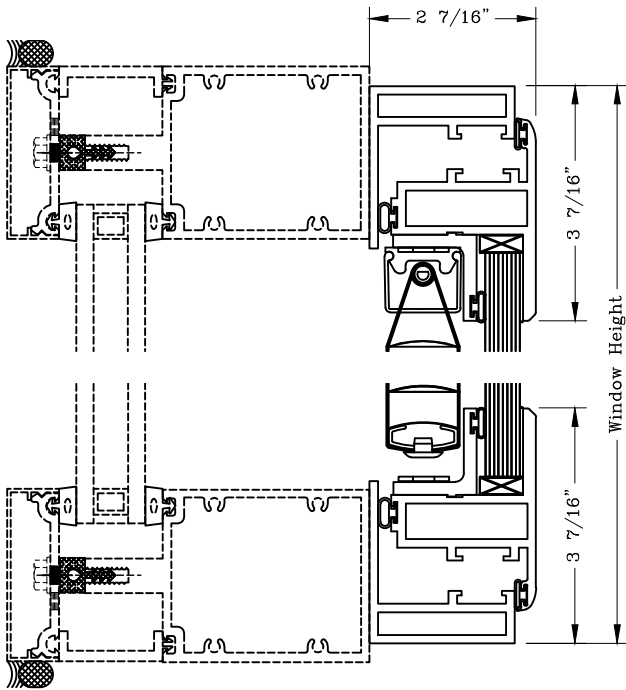


Series: S6300

Manufacturing Code: S6316

Drawing 1/2 Scale – For Custom Size Drawing Contact Graham

**Note:** Sealant Not Shown On Details. Consult Technical Services At Factory For Sealing Procedures.



**Note:** Dashed Lines Represent Inswing Vented Units Lines Converge At Hinge Side Of Vent