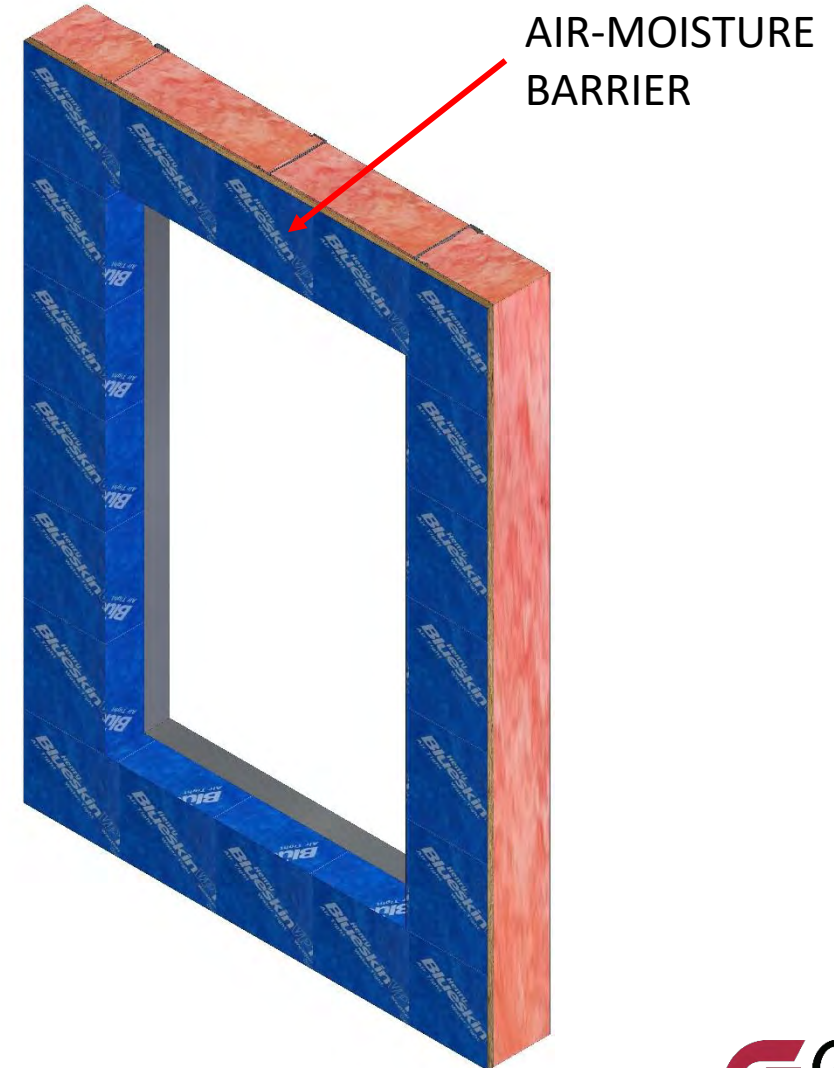
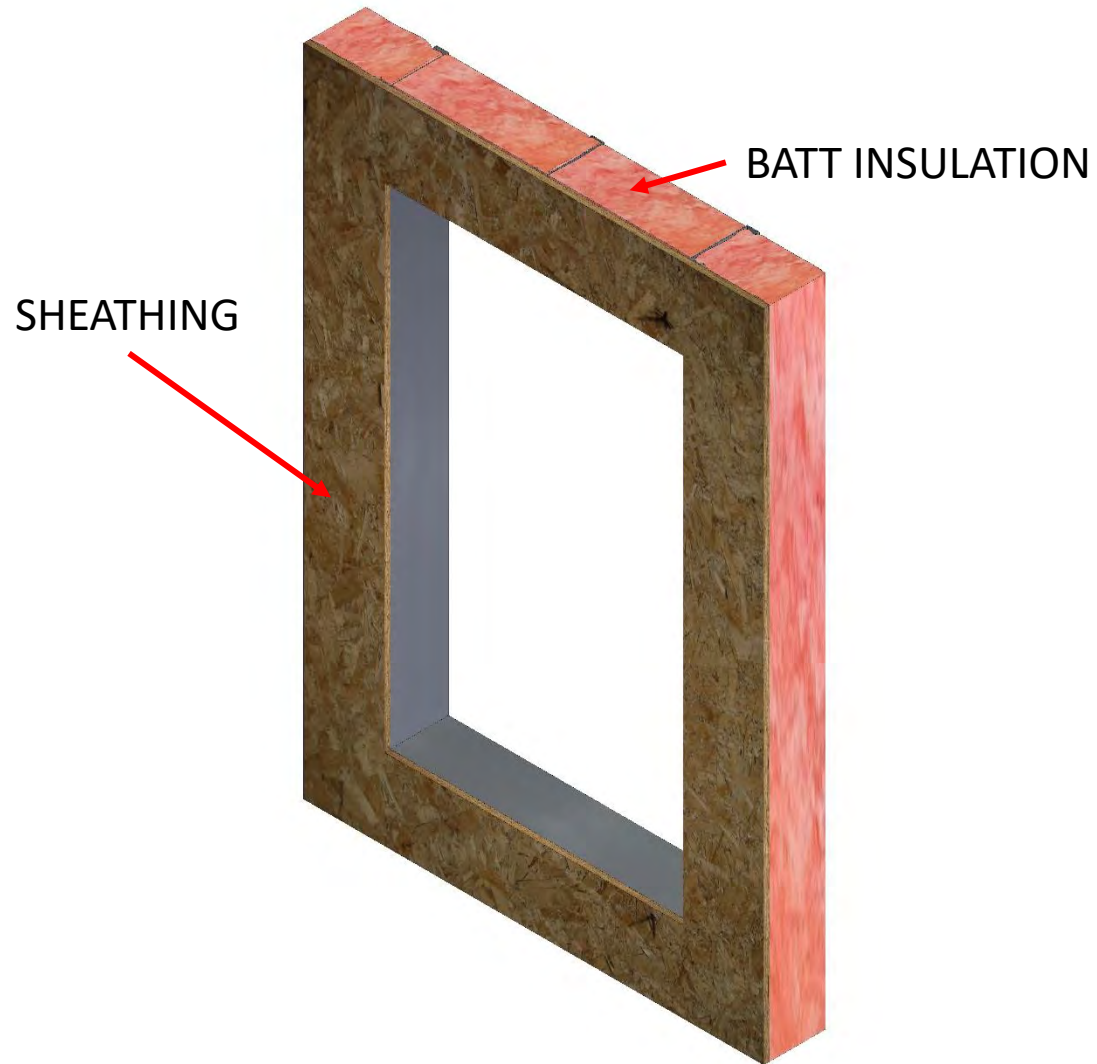




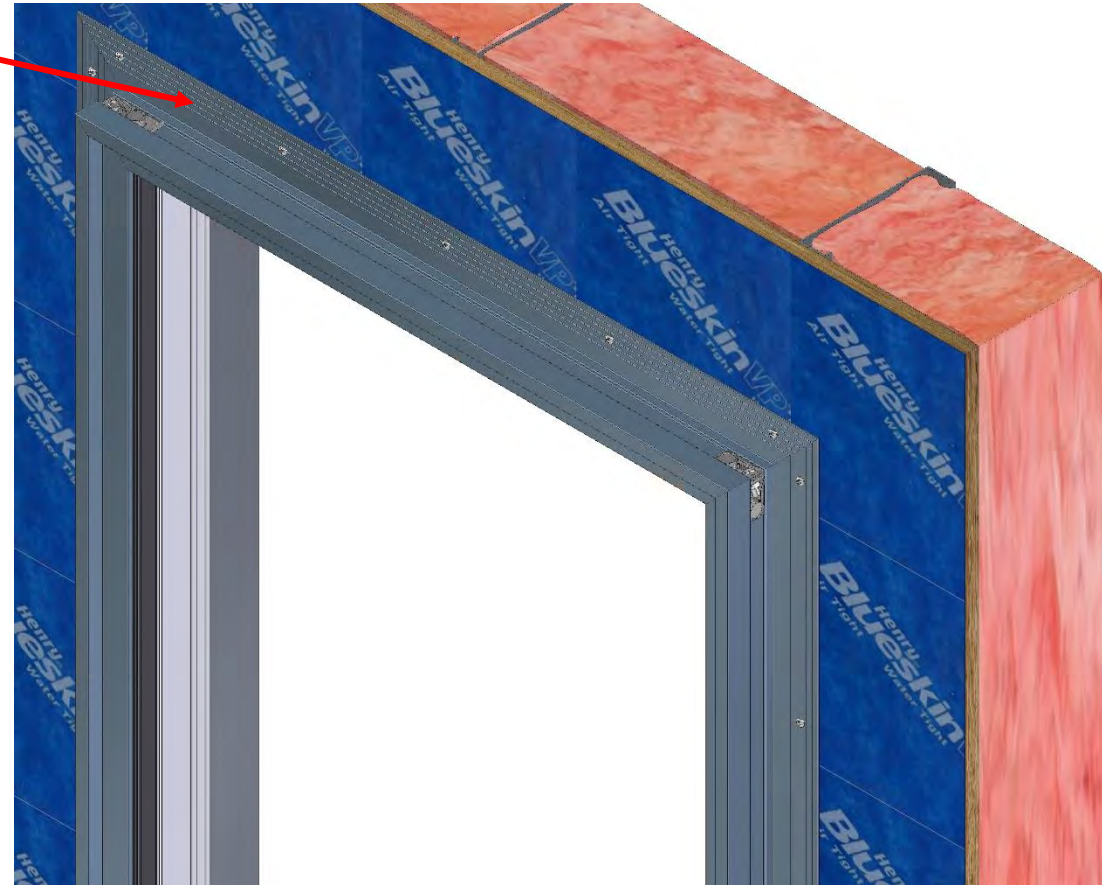
**UNITIZED RECEPTOR WITH
EXTERIOR TRIM AND TEMPORARILY
CLOSING IN AN OPENING
INSTALLATION**

6" STEEL STUD WALL OPENING

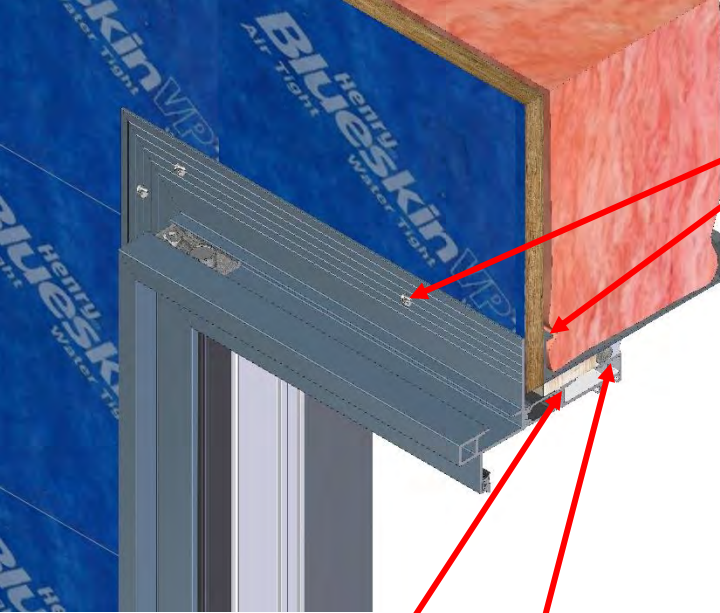


INSTALL UNITIZED RECEPTOR INTO OPENING

FASTEN RECEPTOR FRAME TO
OPENING THRU FLANGE
MAKING SURE FRAME IS
SQUARE AND PLUMB
USING SHIMS @ HEAD,
JAMBS, & SILL



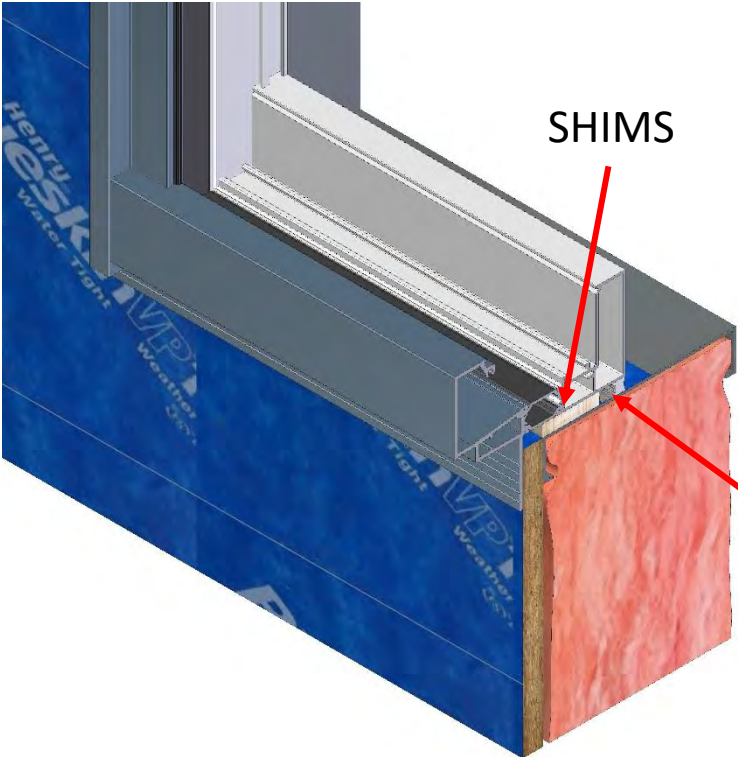
INSTALL UNITIZED RECEPTOR INTO OPENING



FASTEN THRU SHEATING
& STEEL STUD

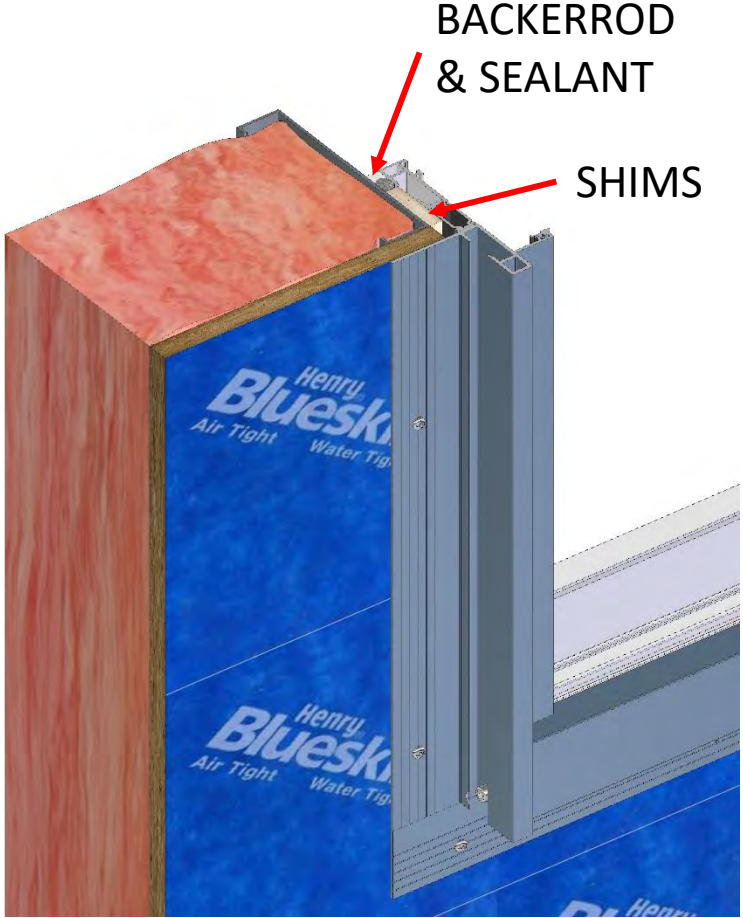
SHIMS

BACKERROD
& SEALANT



SHIMS

BACKERROD
& SEALANT



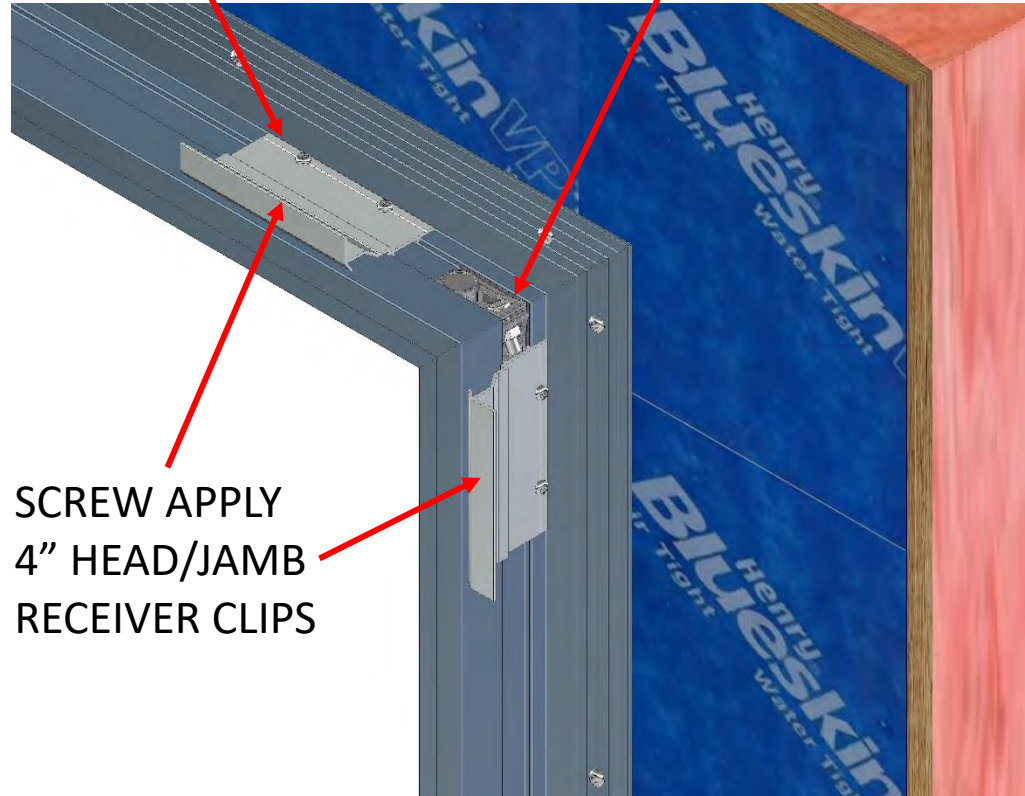
BACKERROD
& SEALANT

SHIMS

INSTALL EXTERIOR TRIM RECEIVER CLIPS

WHEN LOCATING CLIPS
BE SURE THE BACK LEG
MEETS THE FLANGE OF
THE RECEPTOR FRAME

LOCATE CLIPS ABOUT 3"
FROM ENDS AT CORNERS
MAKE SURE CLIP FASTENERS DO NOT
INTERFERE WITH CORNER KEY HARDWARE
& SPACE OTHERS NO GREATER THAN 16" O.C.

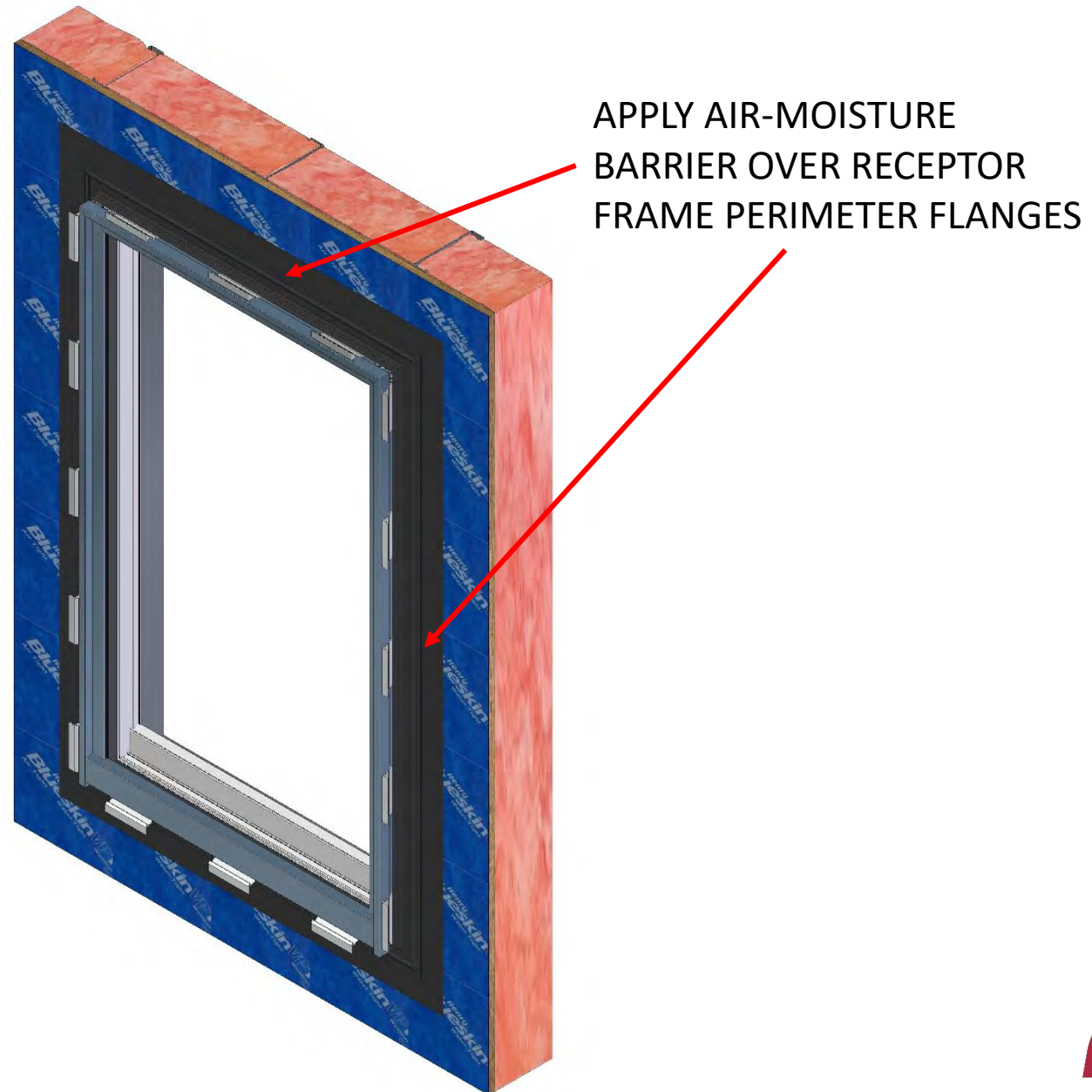


SCREW APPLY
4" HEAD/JAMB
RECEIVER CLIPS



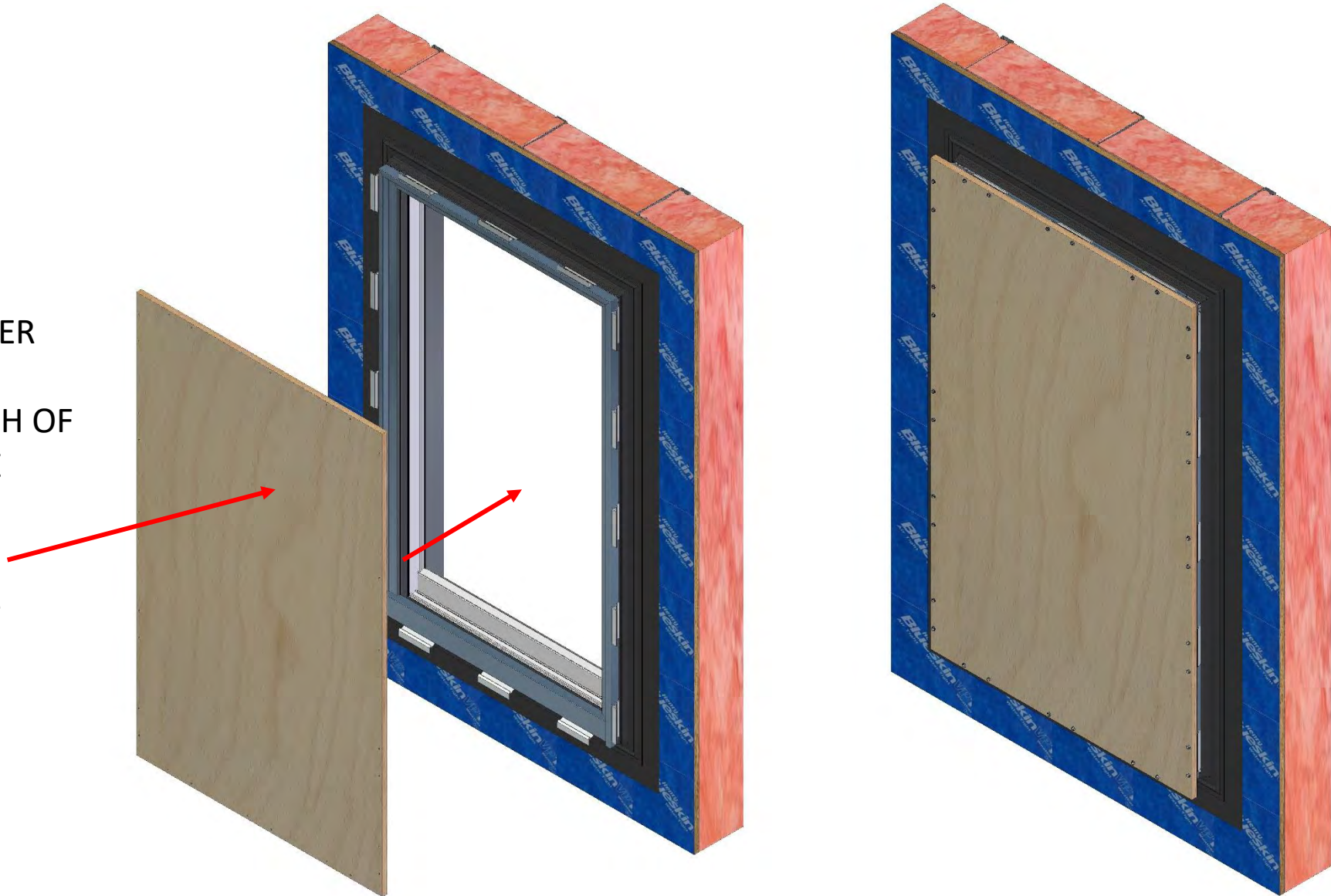
SCREW APPLY
4" SILL
RECEIVER CLIPS

WEATHER SEAL RECEPTOR FRAME FLANGE

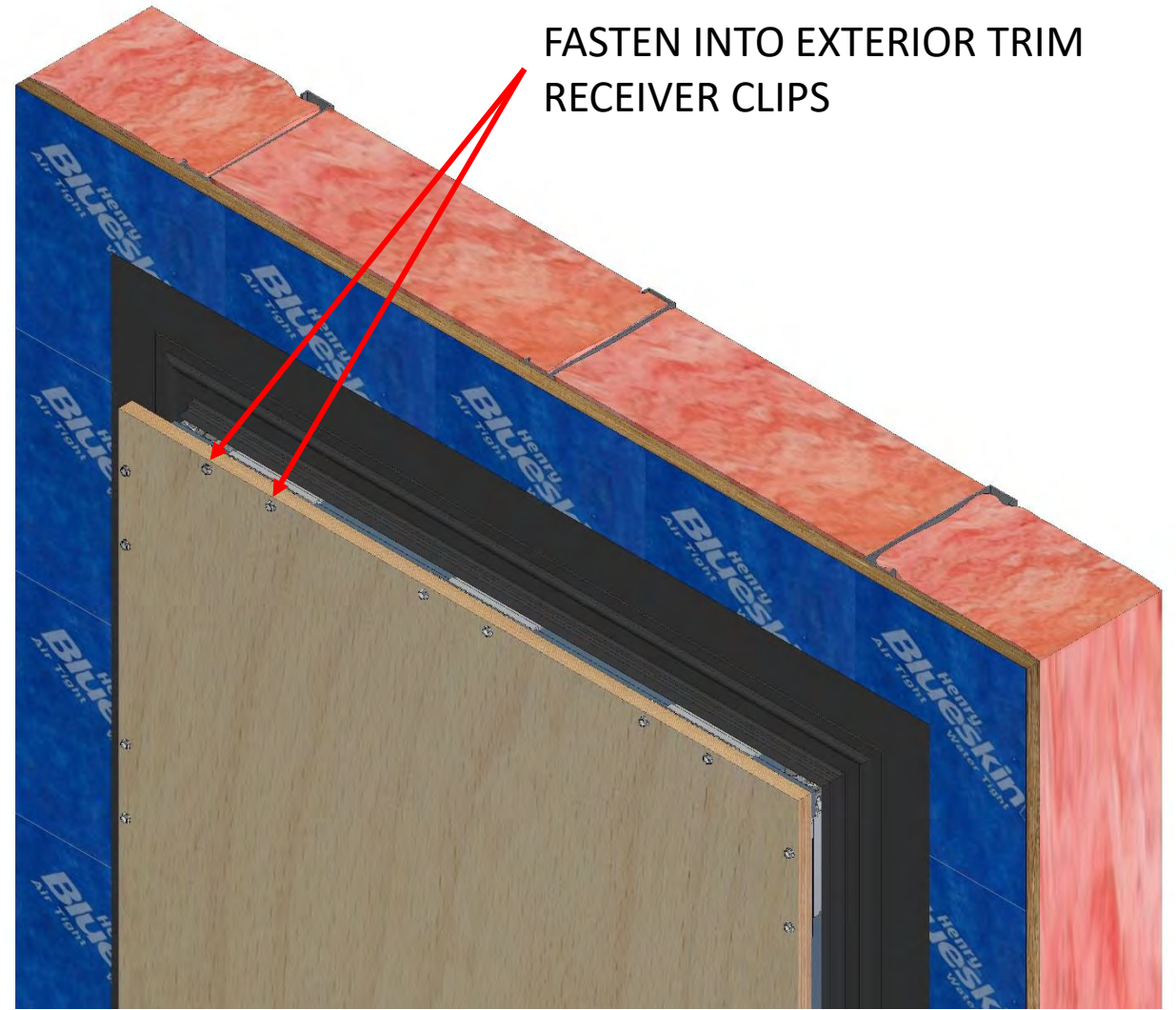


APPLY TEMPORARY PLYWOOD TO RECEPTOR FRAME

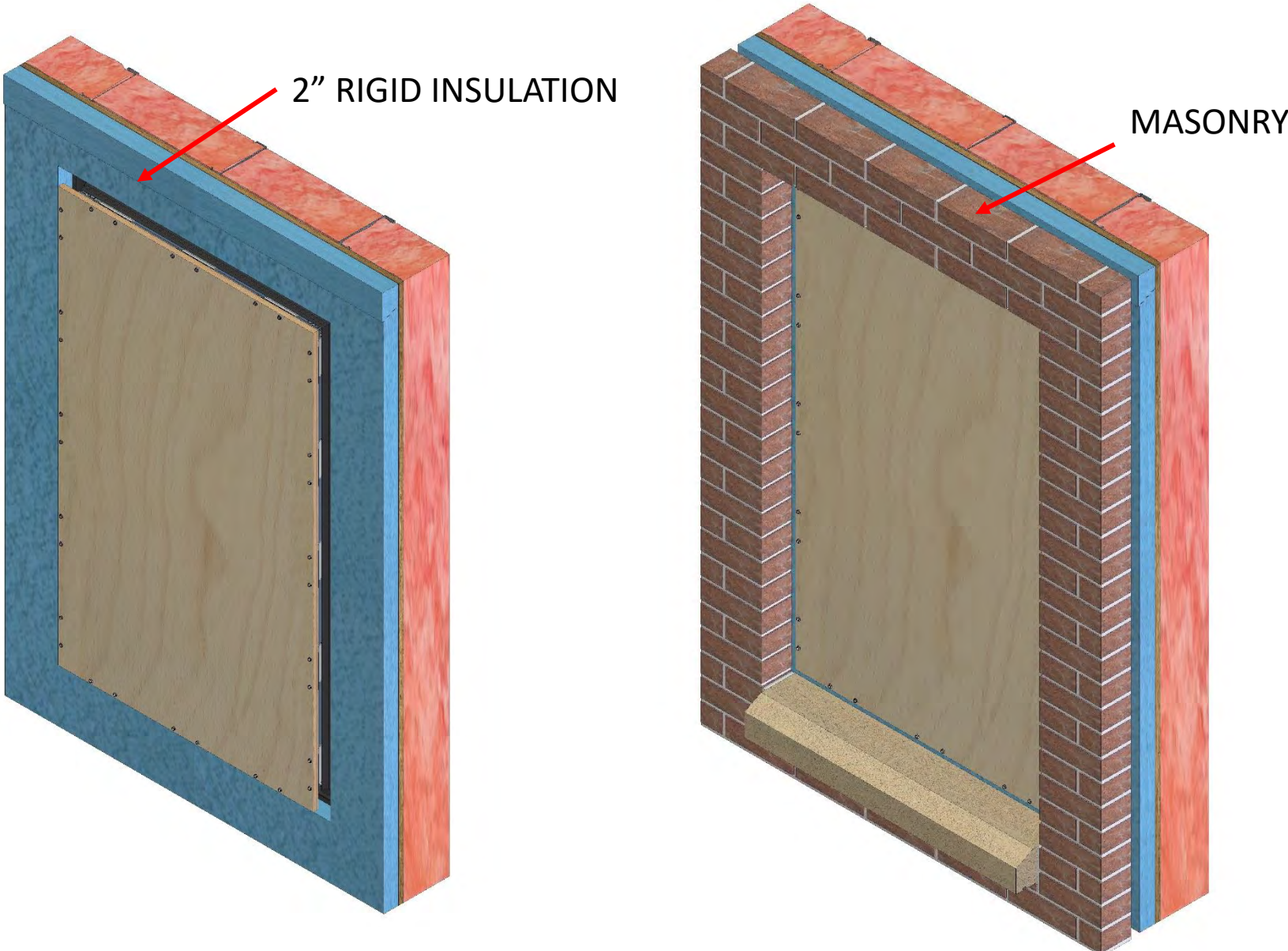
ATTACH PLYWOOD
TO RECEIVER CLIPS
TO TEMPORARILY COVER
THE OPENING AND
TO PROTECT THE FINISH OF
THE RECEPTOR FRAME
DURING WORK FROM
OTHER TRADES.
LIKE MASONRY WORK.



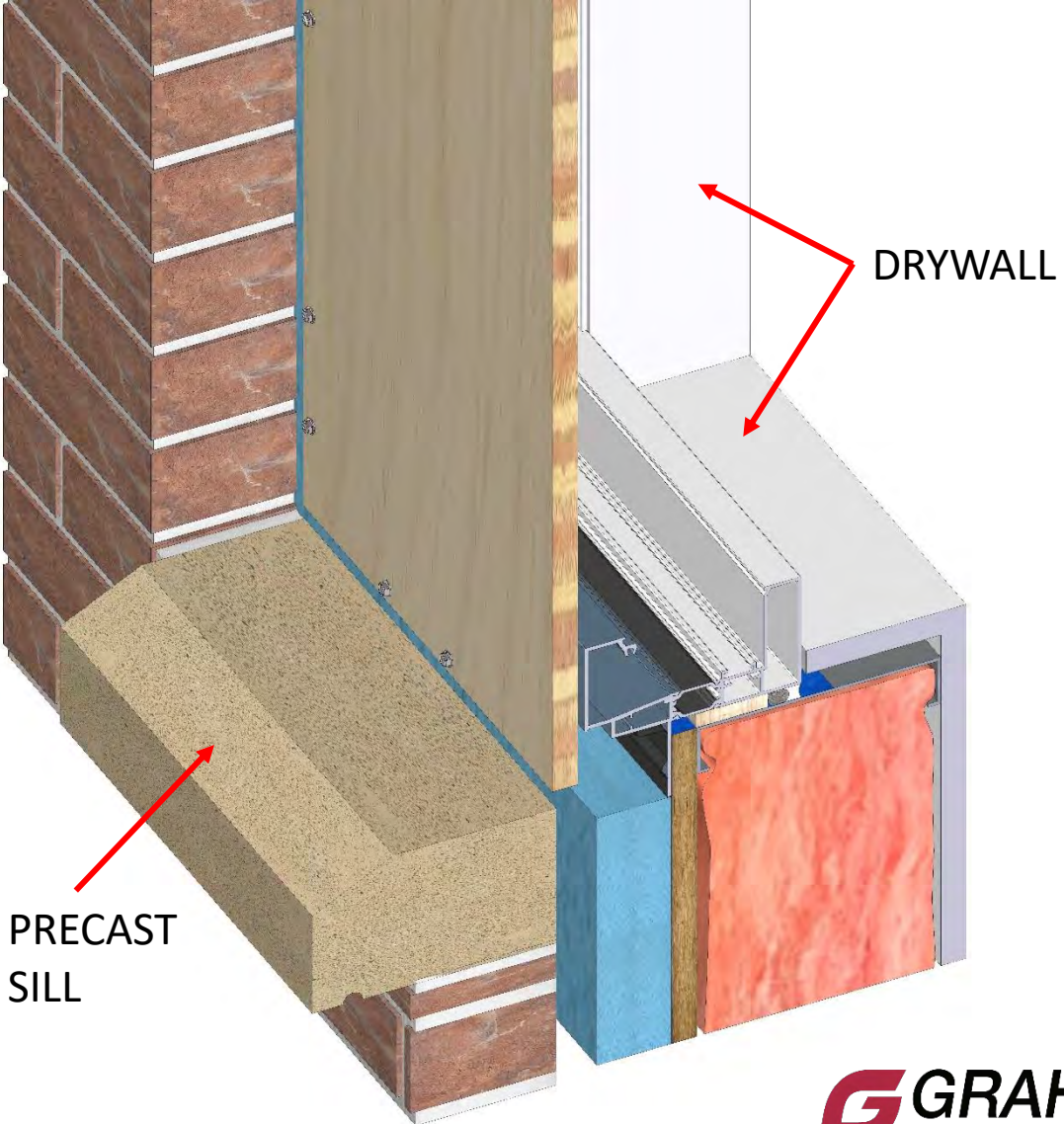
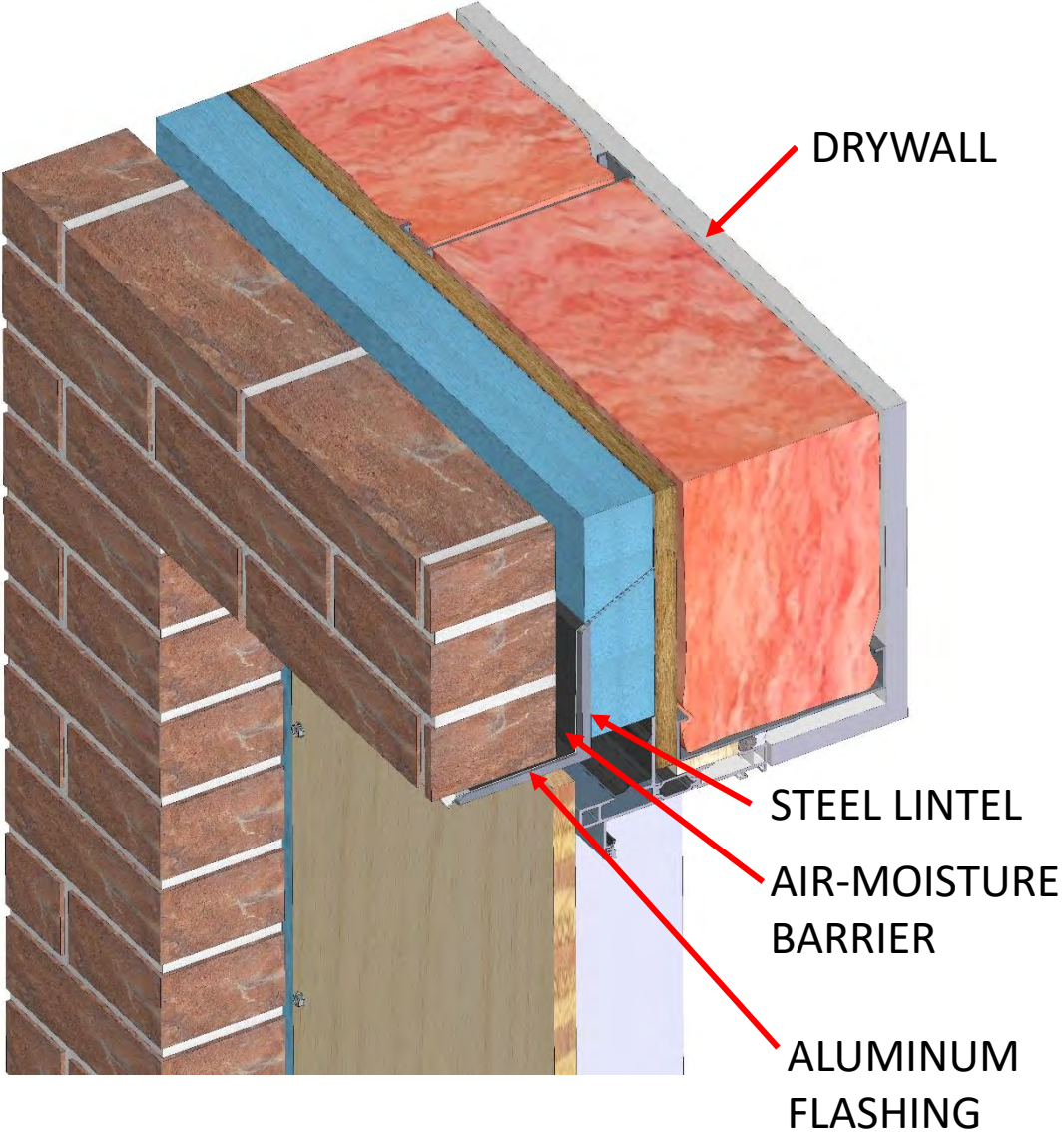
APPLY TEMPORARY PLYWOOD TO RECEPTOR FRAME



WORK BY OTHER TRADES

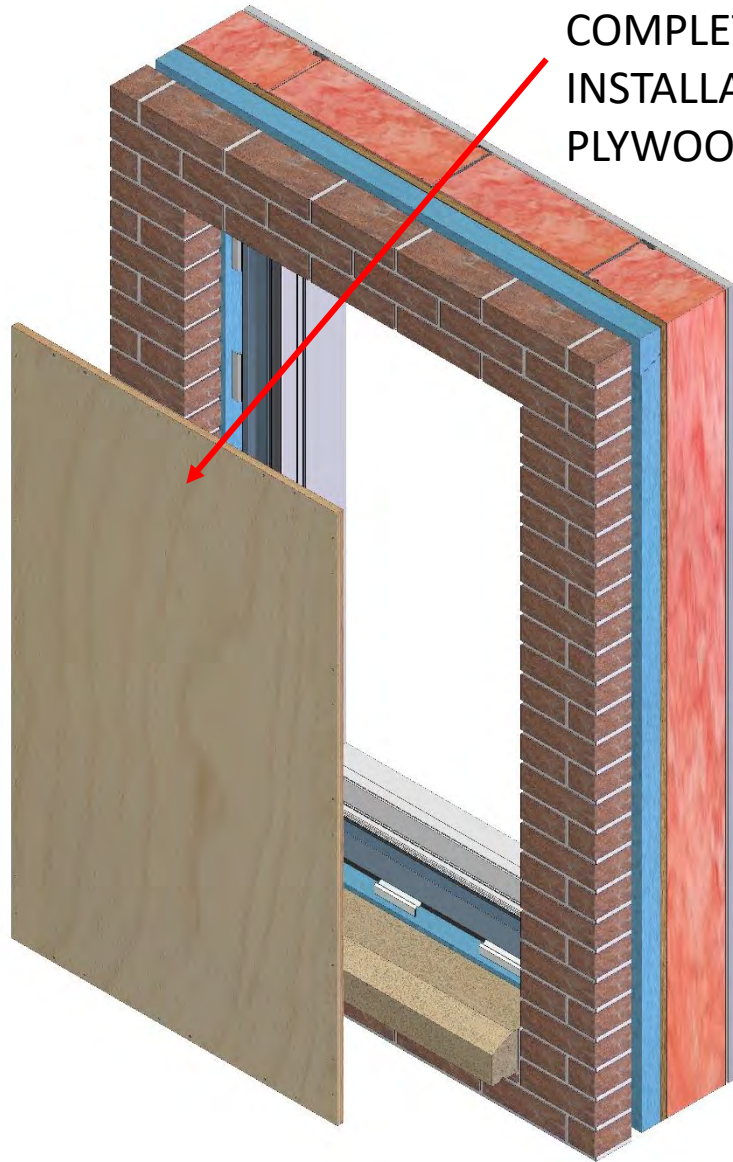


WORK BY OTHER TRADES

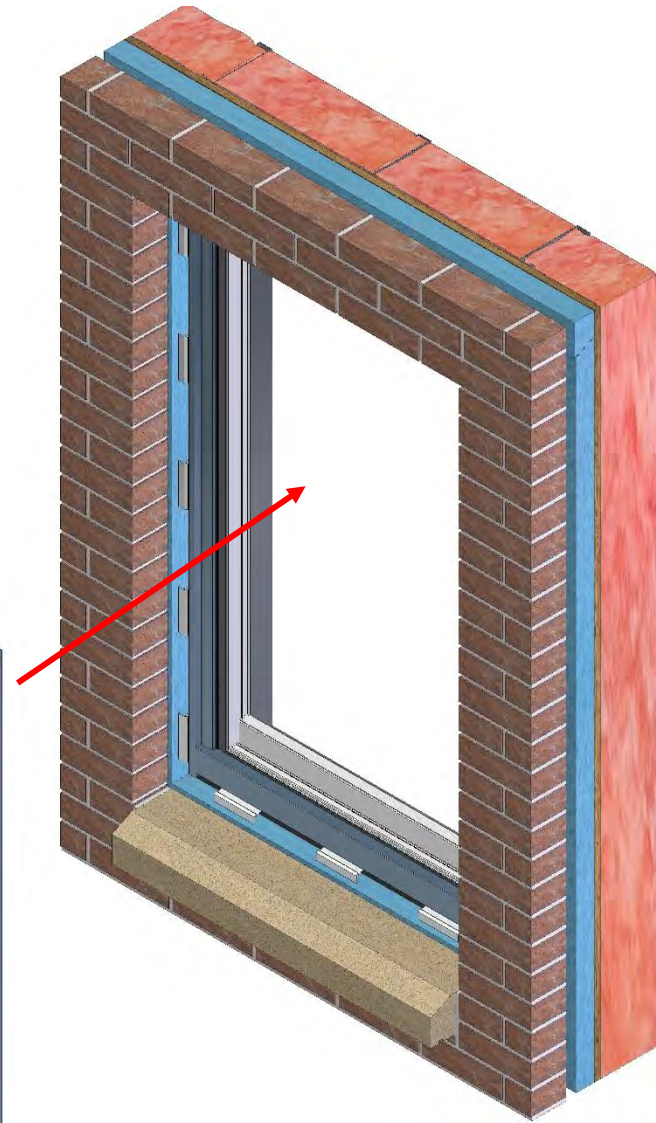
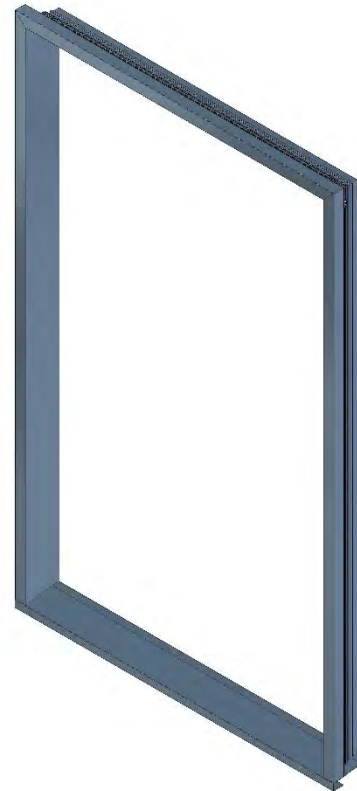


READY FOR EXTERIOR TRIM INSTALLATION

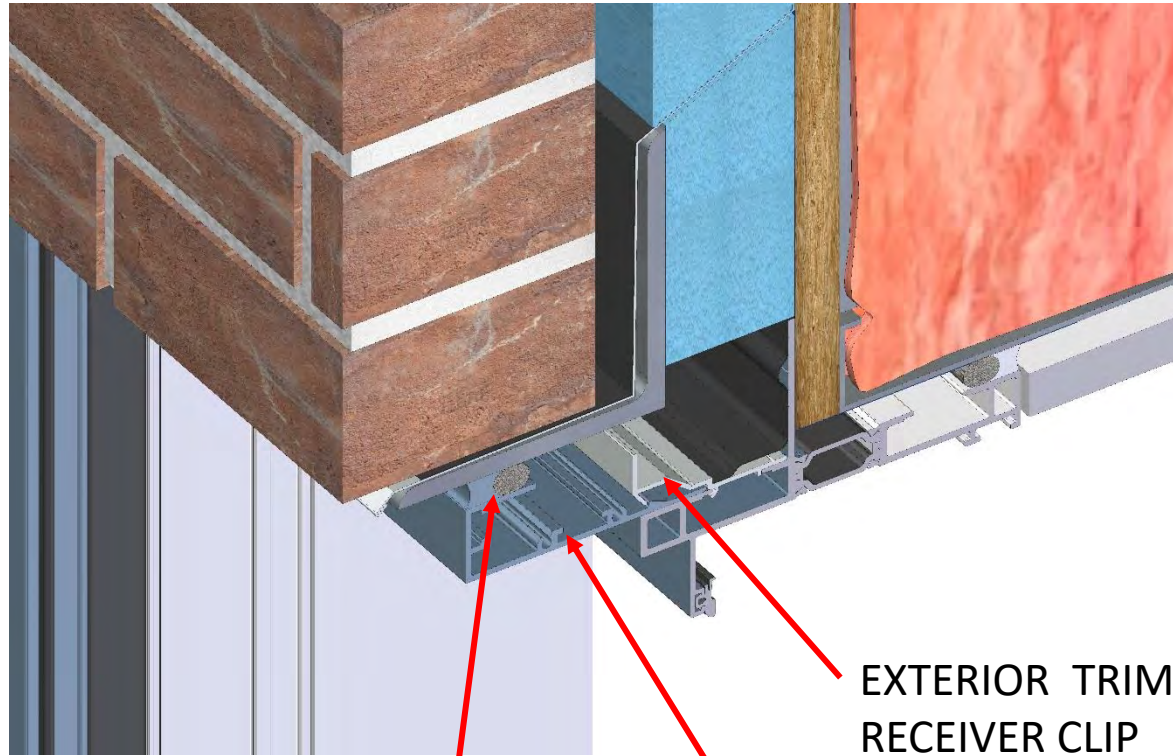
ONCE EXTERIOR & INTERIOR TRADES ARE COMPLETE AND READY FOR WINDOW INSTALLATION, REMOVE TEMPORARY PLYWOOD FROM OPENING



SNAP IN EXTERIOR TRIM INTO TRIM RECEIVER CLIPS



EXTERIOR TRIM INSTALLATION

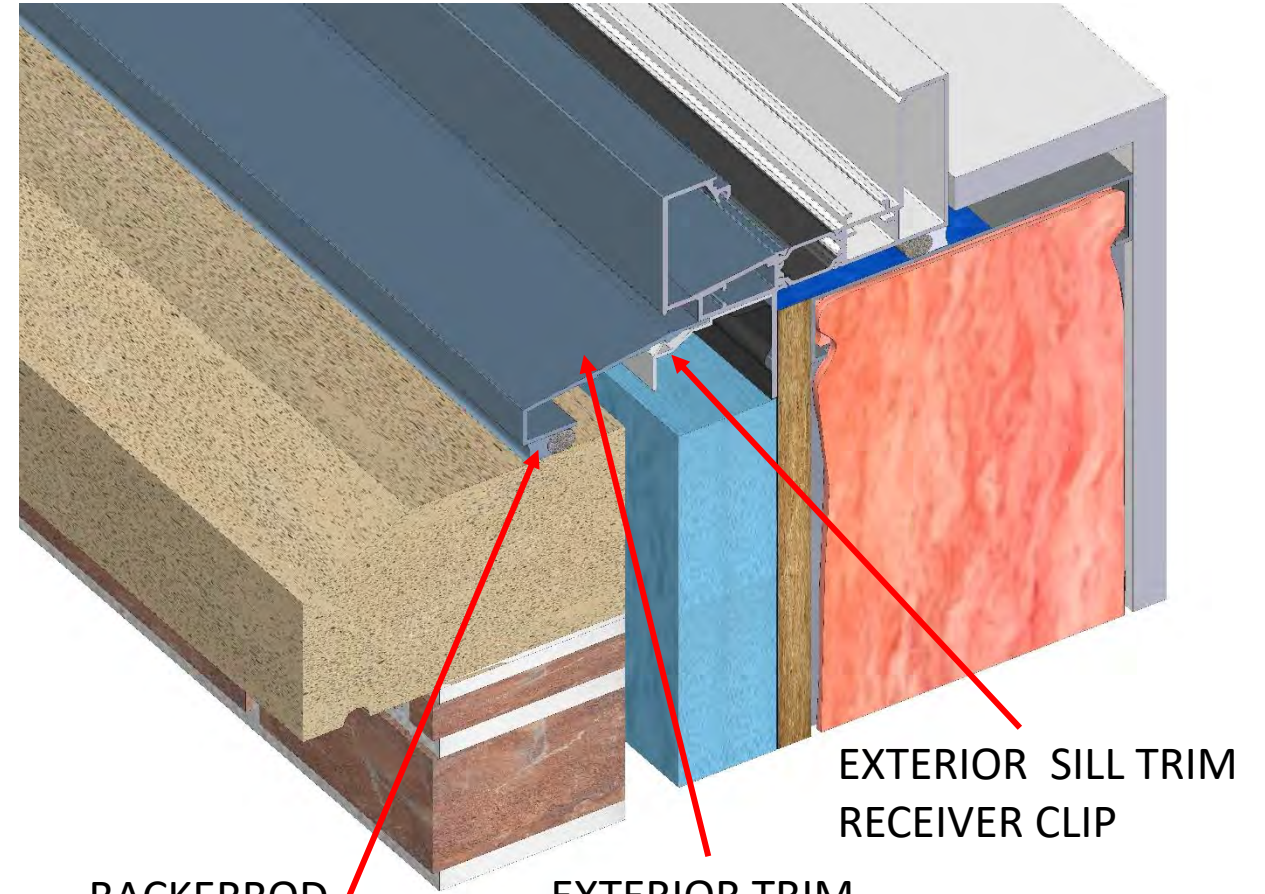


BACKERROD
& SEALANT

EXTERIOR TRIM
FRAME HEAD

EXTERIOR TRIM
RECEIVER CLIP

HEAD



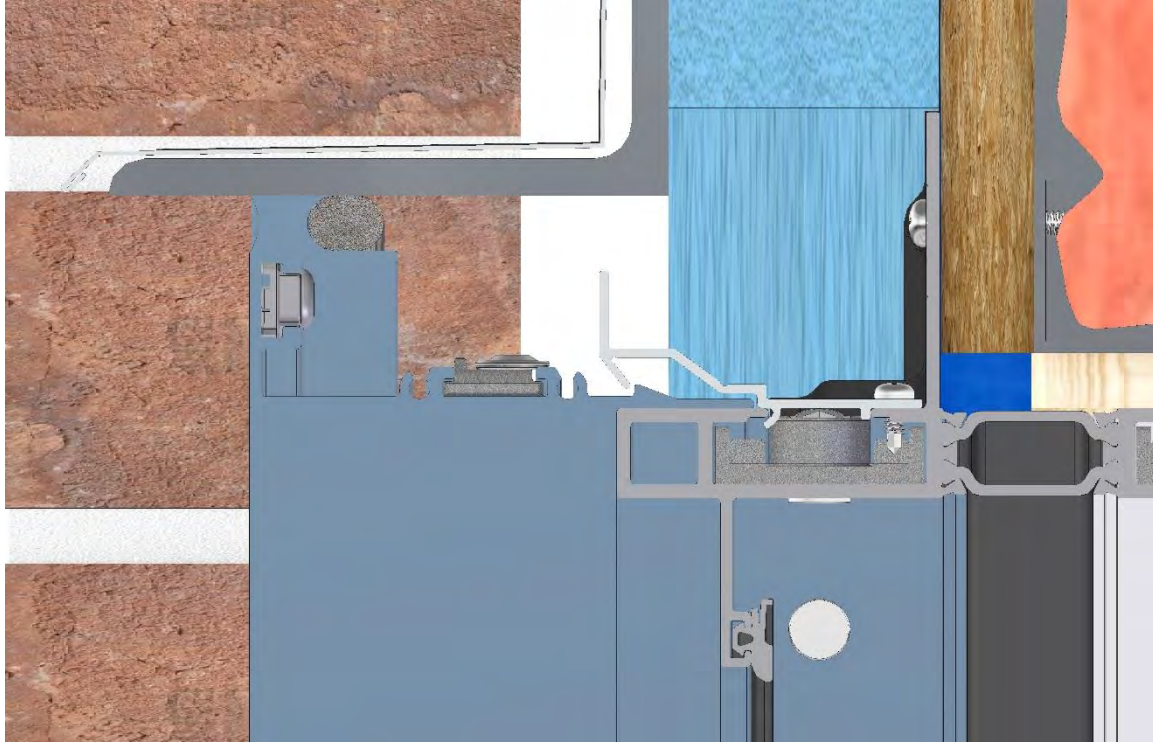
BACKERROD
& SEALANT

EXTERIOR TRIM
FRAME SILL

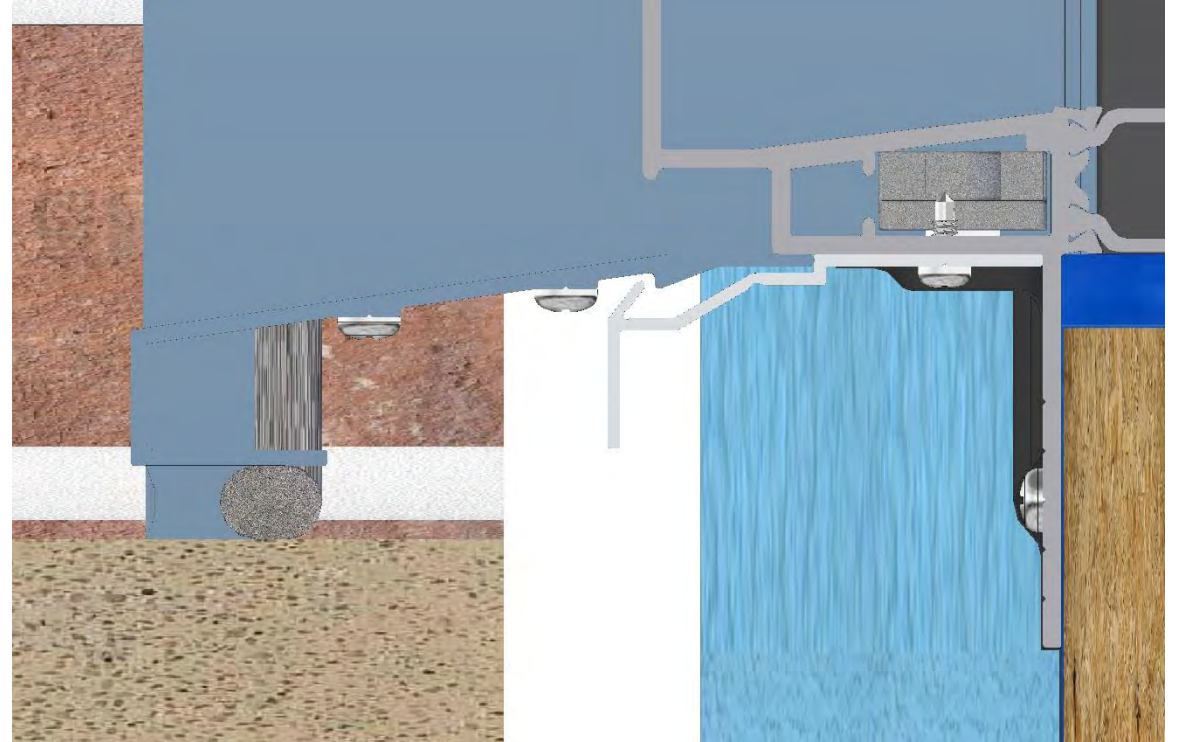
EXTERIOR SILL TRIM
RECEIVER CLIP

SILL

EXTERIOR TRIM INSTALLATION

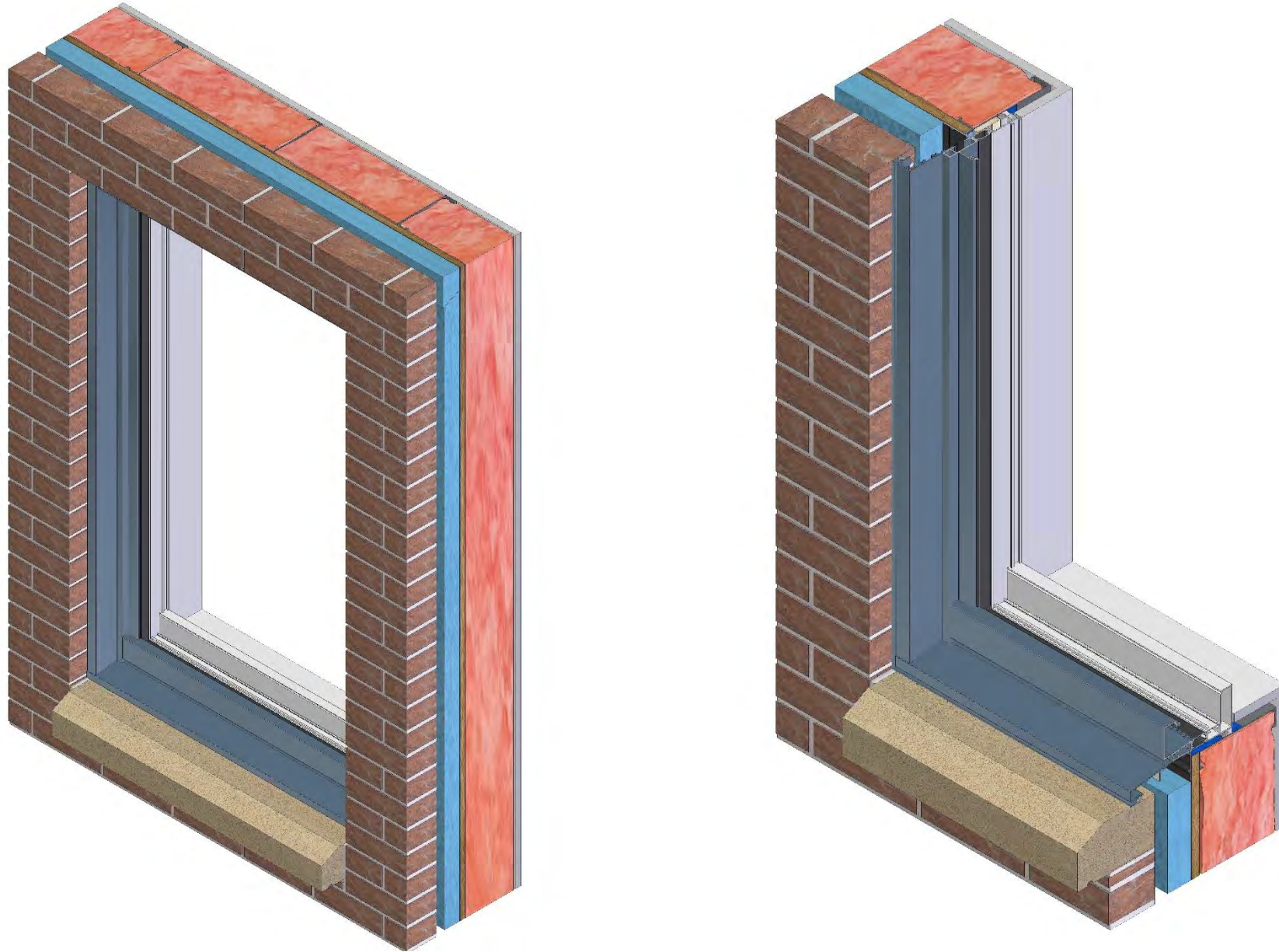


HEAD
JAMB SIMILAR



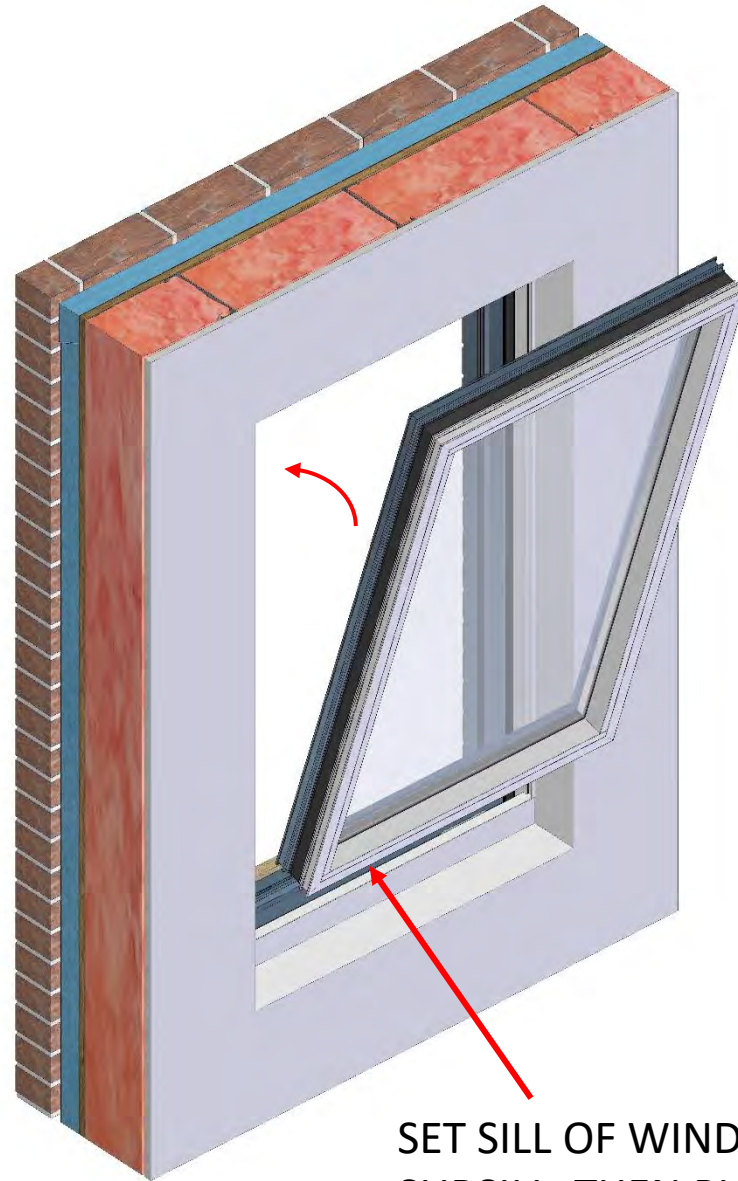
SILL

EXTERIOR TRIM INSTALLATION

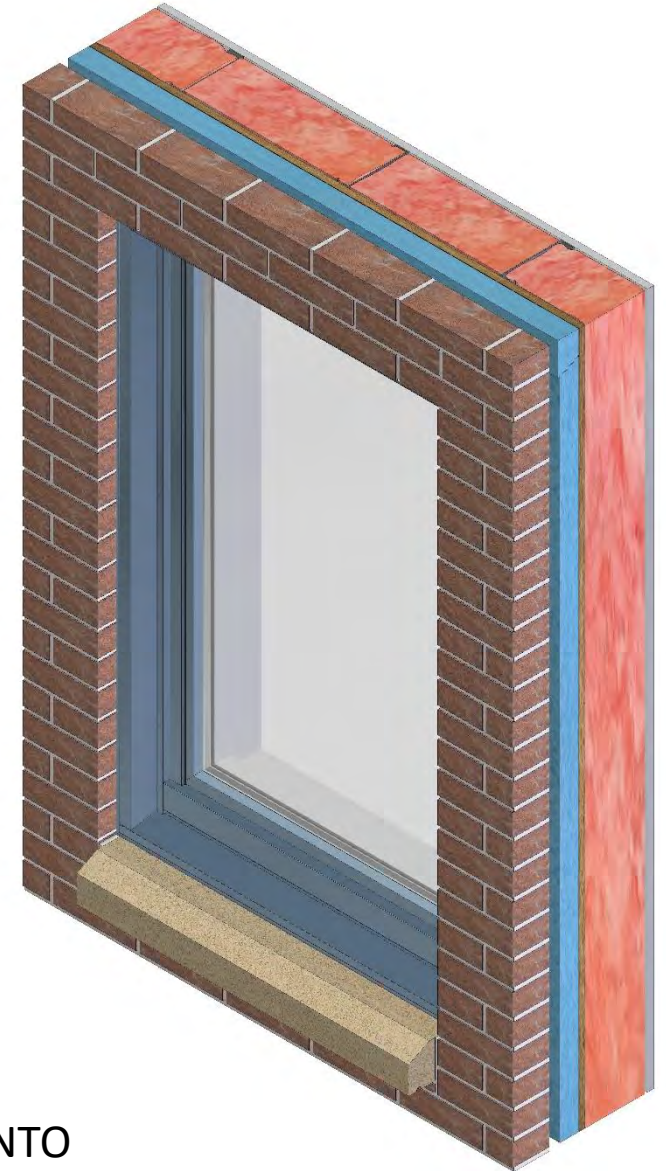


INSTALL WINDOW

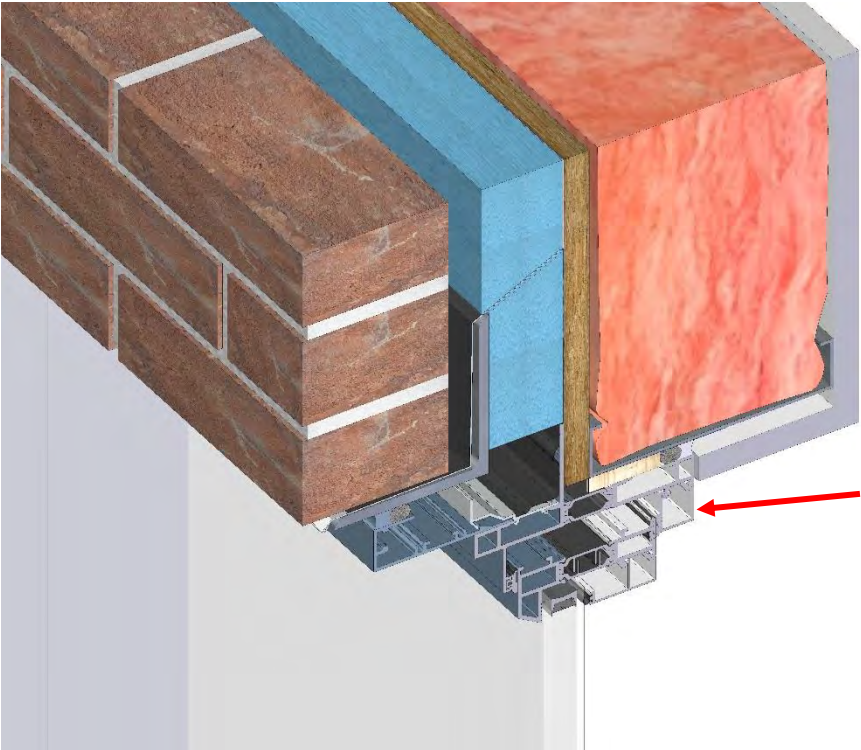
SUBSILL WINDOW SHIMS



SET SILL OF WINDOW INTO
SUBSILL, THEN PLACE INTO
RECEPTOR FRAME



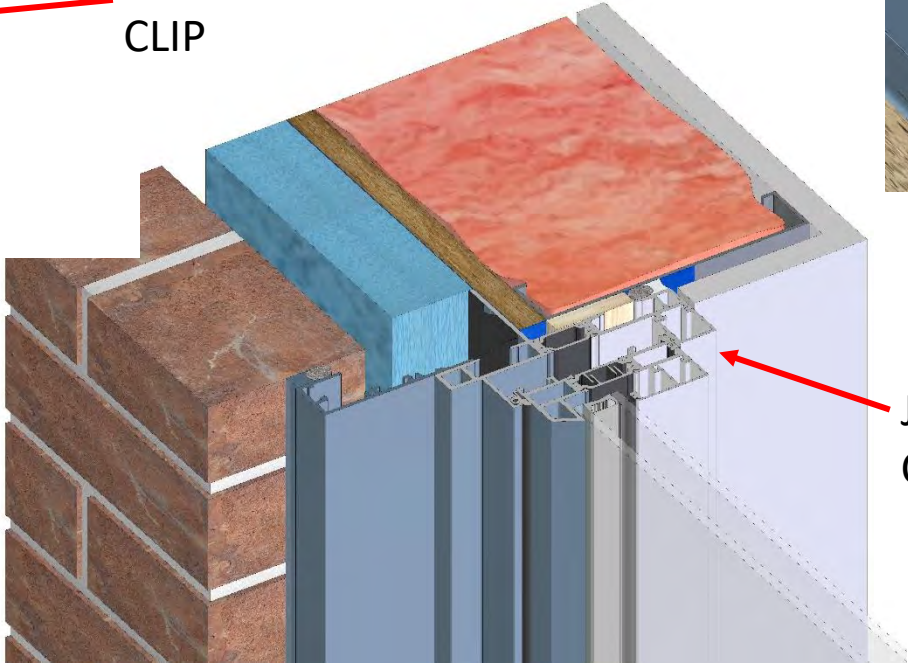
INSTALL WINDOW



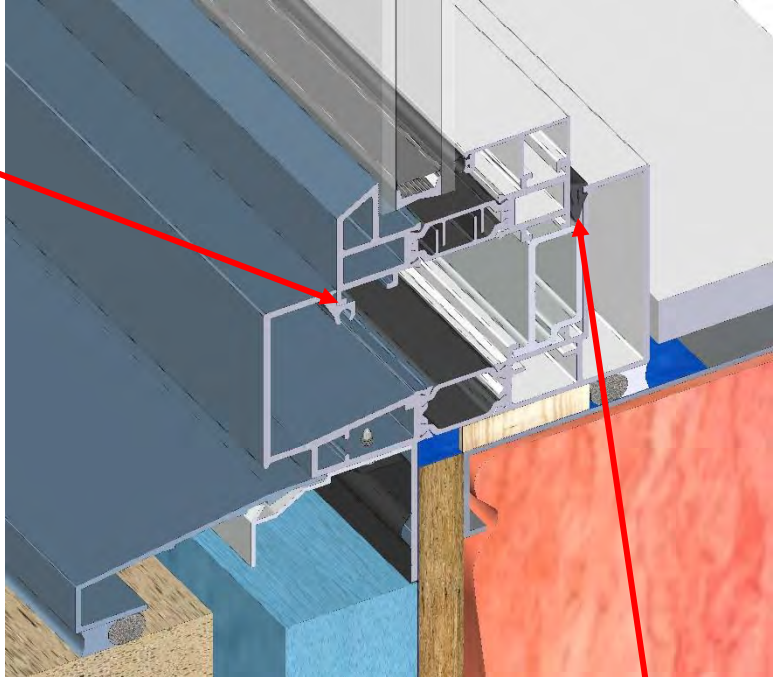
HEAD

SEE GENERAL INSTALLATION & SEALING GUIDELINES FOR UNITIZED RECEPTOR SYSTEMS UNDER TECHNICAL RESOURCES @ www.grahamwindows.com

JAMB



SILL



CONTINUOUS BEAD OF SEALANT

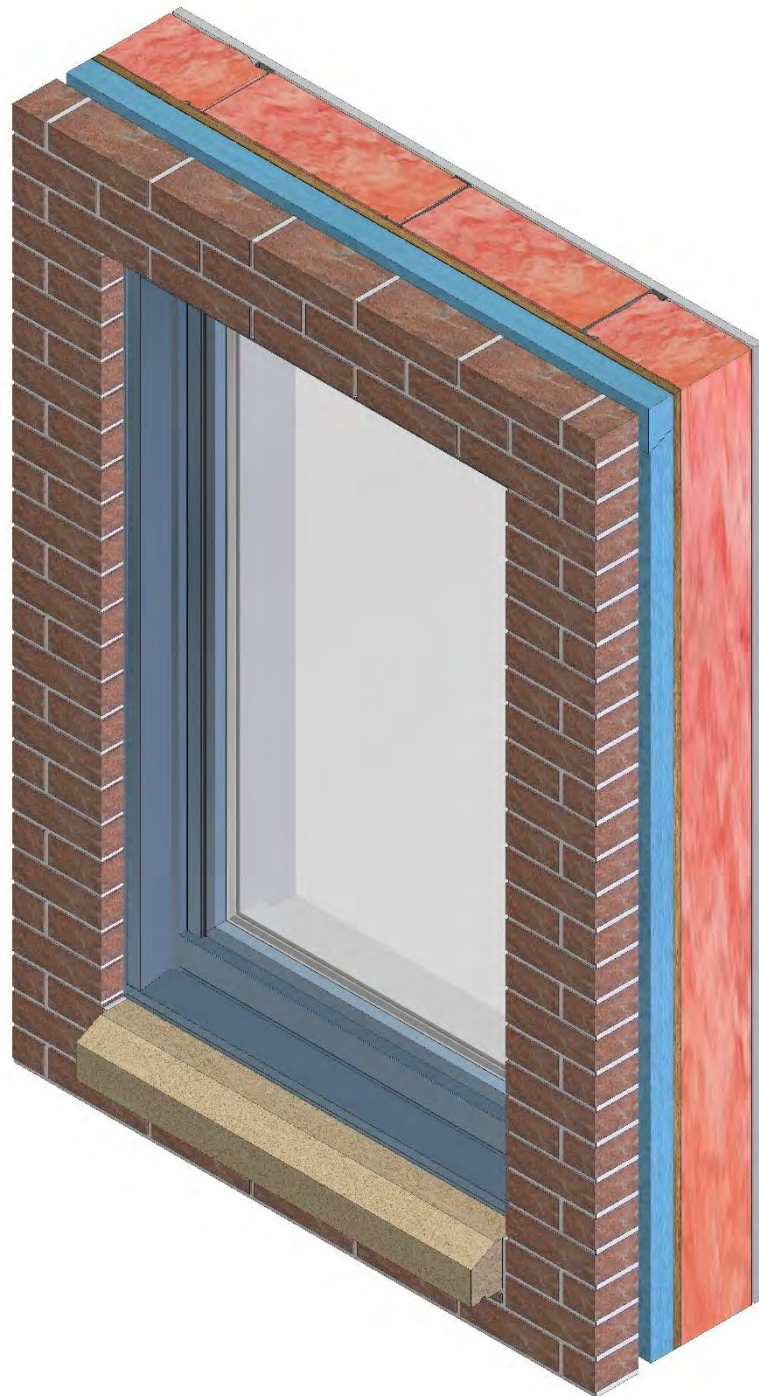
HEAD RECEPTOR CLIP

JAMB RECEPTOR CLIP

SILL WEDGE GASKET



Unitized Receptor Benefits



- Factory Assembled & Sealed
- Reduces Field Labor Time & Cost
- Self Aligning Joinery for Precision Fit – Field KD & Factory
- Speeds Envelope Closing Benefiting Overall Project Schedule
- Factory Warranty: Fit – Finish – Water Performance
- Reduces Installation Liability
- Reduces Window Damage By Other Trades
- Allows for Faster Jobsite Mobilization
- Allows Continuous Perimeter Integral Sealant/Nail Flange Option